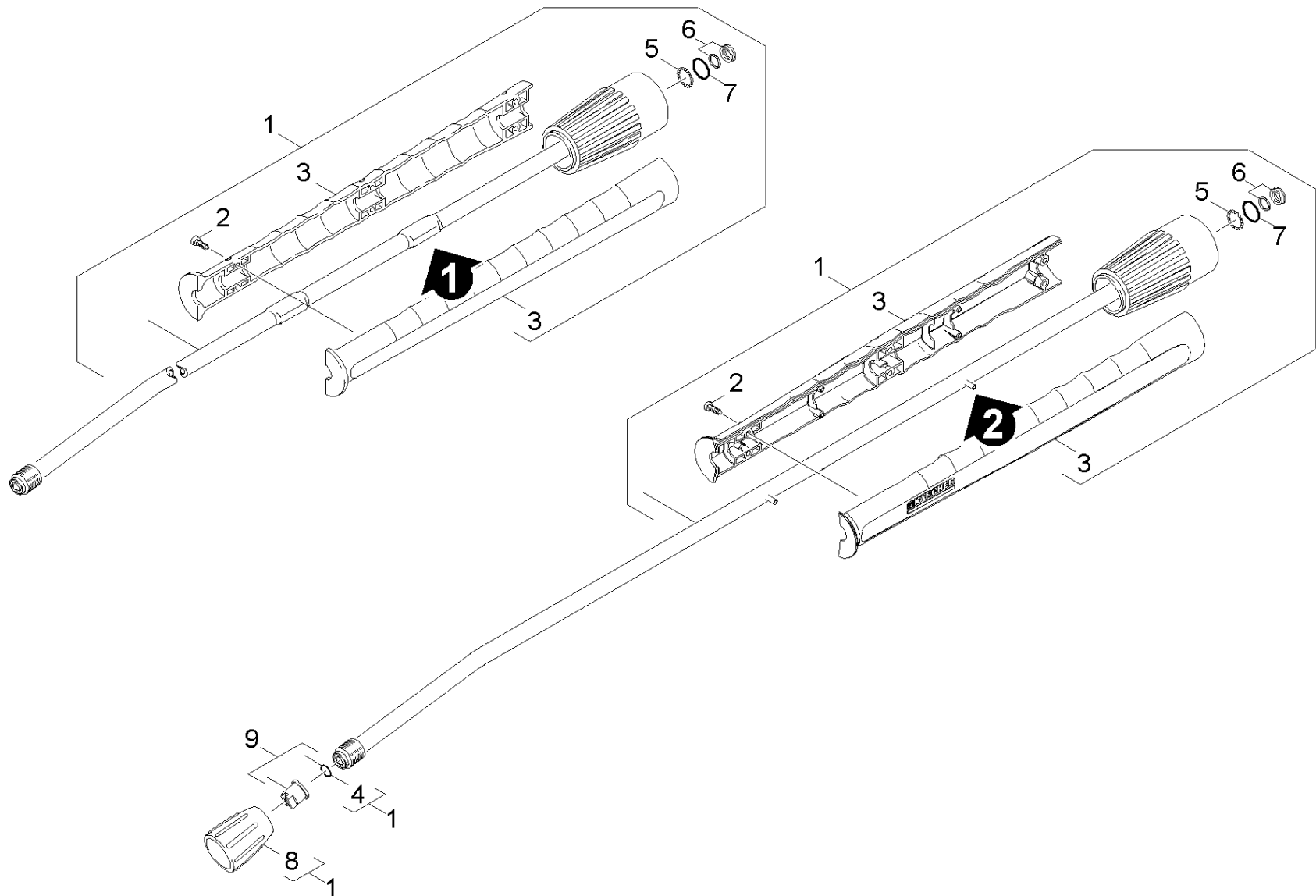


# 103 Jet pipe

Overview technical documents/Professional/High pressure cleaner hotwater/Electric motor/HDS 655 M ECO \*EU (1.026-303.0)/Spare parts list HDS 655 M ECO/100 Accessories/103 Jet pipe



### 103 Jet pipe

Overview technical documents/Professional/High pressure cleaner hotwater/Electric motor/HDS 655 M ECO \*EU (1.026-303.0)/Spare parts list HDS 655 M ECO/100 Accessories/103 Jet pipe

Rez.daļas/nodil.pakļ.daļas	Poz.	Materiāla Nr.	Nosaukums	Daudzums	Pārdoš. vienība	no sēr. Nr.	līdz sēr. Nr.	Daž. informācija
X-X	1	4.760-660.0	Jet pipe packaged only for replacement	1.000	ST	0000000000	0000000000	
	2	7.303-129.0	Skrūve 4x16 -10.9-R2R (K-In6Rd)	6.000	ST	0000000000	0000000000	
	3	5.321-855.0	Stobrs ar metināto skrūvi	1.000	ST			VERSION 2
	3	5.321-691.0	Handhold few jet pipe	1.000	ST	0000000000	0000000000	VERSION 1
	4	2.880-990.0	spare part set o ring from 2.880-296.0	1.000	ST	0000000000	0000000000	
X-X	5	7.401-915.0	Sfēra 2,5 G20 -1.4034 DIN 5401	20.000	ST	0000000000	0000000000	
X-X	6	4.363-692.0	Grooved ring	1.000	ST	0000000000	0000000000	
	7	6.362-524.0	Gredzenblīve 17,0 X 1,5	1.000	ST	0000000000	0000000000	
X	8	5.401-129.0	Skrūves savienotāja daļa	1.000	ST	0000000000	0000000000	
X-X	9	2.883-927.0	Power nozzle 25054	1.000	ST	0000000000	0000000000	
Pozīcijas teksts: / 1.026-345.0 /								
X-X	9	2.883-402.0	Power nozzle 25060	1.000	ST	0000000000	0000000000	
Pozīcijas teksts: / 1.026-346.0								
X-X	9	2.883-400.0	Power nozzle 25052	1.000	ST	0000000000	0000000000	
Pozīcijas teksts: / 1.026-303.0 / -304.0 / -347.0 /								
X-X	9	2.883-401.0	Power nozzle 25055	1.000	ST			
Pozīcijas teksts: 1.026-348.0								