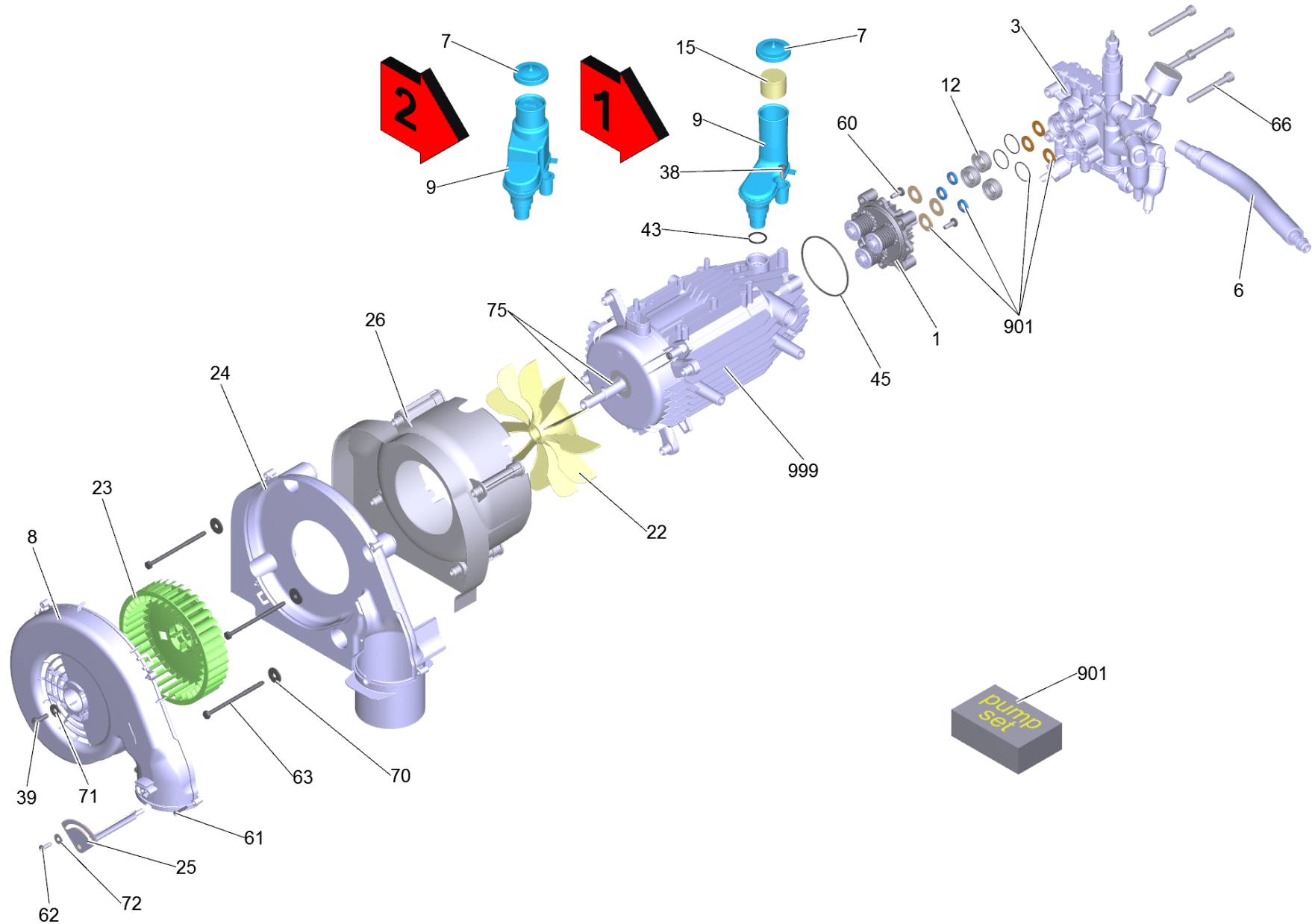


# 5 Motor pump

Professional \ High pressure cleaner hotwater \ Electric motor \ HDS 6/14 C \*EU \ Spare parts list HDS 6/14-C \ Motor pump



## 5 Motor pump

Professional \ High pressure cleaner hotwater \ Electric motor \ HDS 6/14 C \*EU \ Spare parts list HDS 6/14-C \ Motor pump



POS	Article no.	Description	Quantity	Unit	Foot note text
1		HOUSING	1	PC	
3		Cylinder head complete	1	PC	
6	6.393-085.0	Hose assembly DN8 40MPa 0,302m	1	PC	
7	5.064-457.0	Cover plate qusty grey oil	1	PC	
8	5.064-341.0	Cover blower	1	PC	
9	4.070-719.0	Tank oil complete	1	PC	VERSION 1
	<b>Item text1:</b> without sensor				
9	4.071-260.3	Oil container without sensor	1	PC	VERSION 2
12	5.112-875.0	Bush	3	PC	
15	5.132-107.0	Plug	1	PC	
22	5.600-098.0	Blower wheel	1	PC	
23	5.600-100.0	Blower wheel	1	PC	
24	4.605-139.0	Housing blower complete	1	PC	
25	5.606-009.0	Air flap	1	PC	
26	5.692-099.0	Air circulation	1	PC	
33	6.288-219.0	Engine oil 1 L	1	PC	
38	6.303-153.0	Screw M5x15-ST-R2R (IN6RD)	1	PC	
39	6.304-053.0	Screw M6X20-ZNBHL (Precote 30-3)	1	PC	
43	6.362-161.0	O-Ring seal 19,3 X 2,4	1	PC	
45	6.363-077.0	O-Ring seal 75x3	1	PC	
60	7.303-047.0	Screw M6x16 -St-R3R (In6Rd)	2	PC	
61	7.303-084.0	Screw 4x25 -10.9-R2R (K-In6Rd)	2	PC	
62	7.303-107.0	Screw 5x16 -10.9-P2R (K-In6Rd)	1	PC	
63	6.303-517.0	Self-tapping screw M6x100	4	PC	
66	7.306-106.0	Cylinder head screw M8x70 -8.8-A2E ISO4	4	PC	
70	7.312-260.0	Washer 6 -100HV-A3E ISO 7094	4	PC	
71	7.312-276.0	Washer 6 -200HV-A2E ISO7093-1	1	PC	
72	7.312-278.0	Washer 5-200HV-A2E ISO7093-1	1	PC	
75	7.318-005.0	Parallel key 5x5x28-C45K DIN 6885	2	PC	
901	2.884-034.0	Pump set	1	PC	
999	4.624-029.0	Motor complete nur fuer Ersatz	1	PC	