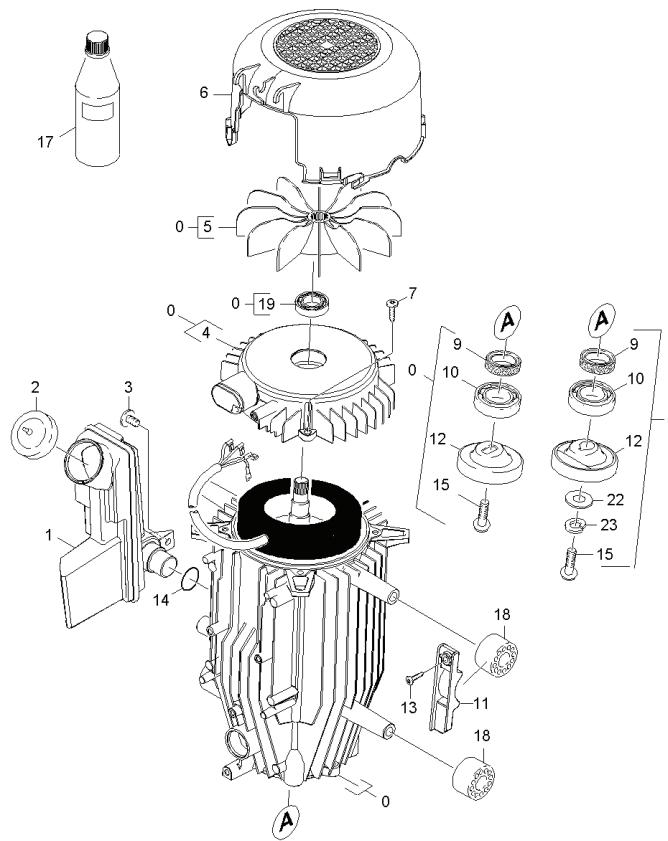


# 30 Motor

Professional \ High pressure cleaner cold water \ Electric motor \ HD 6/15 CX PLUS \*CH \ Spare parts list HD 6/15 CX HD 7/18 CX \ Motor



### 30 Motor

Professional \ High pressure cleaner cold water \ Electric motor \ HD 6/15 CX PLUS \*CH \ Spare parts list HD 6/15 CX HD 7/18 CX \ Motor



| POS | Article no.  | Description                             | Quantity | Unit |
|-----|--|---|----------|------|
| 6   | 5.692-081.0  | Air circulation                         | 1.000    | ST   |
| 10  | 6.401-427.0  | Angular contact ball bearing            | 1.000    | ST   |
| 19  | 7.401-128.0  | Ball bearing 6202-2RS -Wälzl.St DIN 625 | 1.000    | ST   |
| 4   | 5.094-148.0  | Bearing cover B                         | 1.000    | ST   |
| 4   | 5.064-197.0  | Bearing cover B                         | 1.000    | ST   |
|     | Item text1: 1.214-126.0                              |   |          |      |
| 5   | 5.600-060.0  | Blower wheel                            | 1.000    | ST   |
| 2   | 5.063-389.0  | Cover                                   | 1.000    | ST   |
|     | Item text1: 1.150-651.0/ -653.0 / -654.0 / -657.0    |   |          |      |
|     | Item text2: / 1.214-126.0                            |   |          |      |
| 2   | 5.064-457.0  | Cover qusty grey SAE 90                 | 1.000    | ST   |
|     | Item text1: 1.151-611.0 / -651.0 / -652.0 / -653.0   |   |          |      |
|     | Item text2: /-654.0 /                                |   |          |      |
| 15  | 7.306-042.0  | Cylinder head screw M8x25 -8.8-A2E ISO4 | 1.000    | ST   |
|     | Item text1: 1.151-611.0/ -651.0 / -652.0 / -653.0 /  |   |          |      |
|     | Item text2: -654.0 / -655.0 /-656.0 / 1.214-126.0    |   |          |      |
| 17  | 6.288-050.0  | Engine oil 1L                           | 1.000    | ST   |
|     | Item text1: 1.150-651.0/ -652.0/ -653.0/ -654.0 /    |   |          |      |
|     | Item text2: 1.150-657.0 / 1.214-126.0                |   |          |      |
| 17  | 6.288-016.0  | Gear oil 1L                             | 1.000    | ST   |
|     | Item text1: 1.151-611.0 / -651.0 / -652.0 / -653.0 / |   |          |      |
|     | Item text2: -654.0 / -655.0 /-656.0 /                |   |          |      |
| 0   | 4.623-675.0  | Motor complete                          | 1.000    | ST   |
|     | Item text1: 1.150-651.0 / -653.0 / -654.0 / -657.0   |   |          |      |
| 0   | 4.623-683.0  | Motor complete                          | 1.000    | ST   |
|     | Item text1: 1.151-611.0 /-651.0 /-652.0 /-653.0 /    |   |          |      |
|     | Item text2: -654.0 /-655.0 /                         |   |          |      |
| 0   | 4.623-754.0  | Motor complete                          | 1.000    | ST   |
|     | Item text1: 1.150-652.0                              |   |          |      |
| 0   | 4.623-868.0  | Motor complete only for replacement     | 1.000    | ST   |
|     | Item text1: 1.214-126.0                              |   |          |      |
| 0   | 4.623-850.0  | Motor complete only for replacement     | 1.000    | ST   |
|     | Item text1: 1.151-656.0                              |   |          |      |

### 30 Motor

Professional \ High pressure cleaner cold water \ Electric motor \ HD 6/15 CX PLUS \*CH \ Spare parts list HD 6/15 CX HD 7/18 CX \ Motor



| POS | Article no.  | Description                              | Quantity | Unit |
|-----|--|--|----------|------|
| 11  | 5.802-288.0  | Mounting part                            | 2.000    | ST   |
| 14  | 6.362-161.0  | O-Ring seal 19,3 X 2,4                   | 1.000    | ST   |
| 9   | 7.367-001.0  | Radial shaft seal ring A24x37x7 -NBR DI  | 1.000    | ST   |
| 18  | 5.767-005.0  | Rubber buffer                            | 4.000    | ST   |
| 13  | 7.303-108.0  | Screw 5x20 -10.9-R2R (In6Rd)             | 2.000    | ST   |
| 3   | 6.303-153.0  | Screw M5x15-ST-R2R (IN6RD)               | 1.000    | ST   |
| 7   | 6.303-320.0  | Screw M 5x 20-St-R2R                     | 4.000    | ST   |
| 23  | 7.313-004.0  | Spring washer B 8-FSt-A3E DIN 127        | 1.000    | ST   |
|     | Item text1: 1.151-611.0/ -651.0 / -652.0 / -653.0 /  |  |          |      |
|     | Item text2: -654.0 / -655.0 /-656.0 /                |  |          |      |
| 1   | 5.070-639.0  | Tank oil                                 | 1.000    | ST   |
| 22  | 7.312-277.0  | Washer 8-200HV-A2E ISO7093-1             | 1.000    | ST   |
|     | Item text1: 1.151-611.0/ -651.0 / -652.0 / -653.0 /  |  |          |      |
|     | Item text2: -654.0 / -655.0 /-656.0 /                |  |          |      |
| 12  | 4.120-213.0  | Wobble plate                             | 1.000    | ST   |
|     | Item text1: 1.151-611.0 / -651.0 / -652.0 / -653.0 / |  |          |      |
|     | Item text2: -654.0 /-655.0 /                         |  |          |      |
| 12  | 6.401-307.3  | Wobble plate                             | 1.000    | ST   |
|     | Item text1: 1.150-651.0 / -652.0 / -653.0 / -654.0 / |  |          |      |
|     | Item text2: 1.150-657.0                              |  |          |      |
| 12  | 4.120-219.0  | Wobble plate complete                    | 1.000    | ST   |
|     | Item text1: 1.214-126.0                              |  |          |      |
| 12  | 4.120-222.0  | Wobble plate complete only for replaceme | 1.000    | ST   |
|     | Item text1: 1.151-656.0                              |  |          |      |
| 15  | 9.086-169.0  | Wobble plate screw M8x16                 | 1.000    | ST   |
|     | Item text1: 1.150-651.0 / -652.0 / -653.0 / -654.0 / |  |          |      |
|     | Item text2: 1.150-657.0                              |  |          |      |