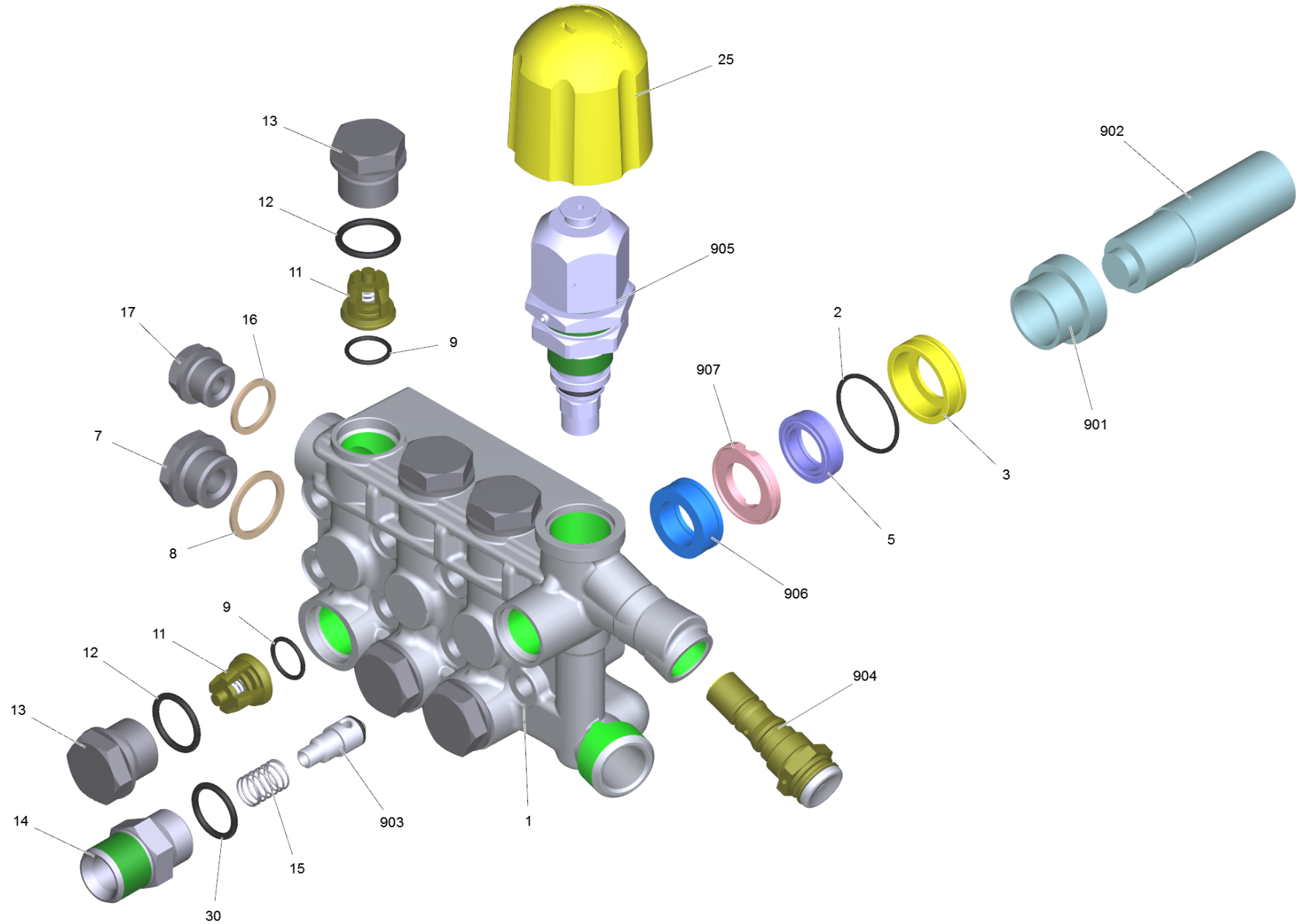


# 57 Cylinder head pressure switch complete 2

Professional \ High pressure cleaner cold water \ Electric motor \ HD 9/20-4 \*KAP \ Spare parts list high-pressure 9/20-4 TR \ Cylinder head pressure switch complete 2



## 57 Cylinder head pressure switch complete 2

Professional \ High pressure cleaner cold water \ Electric motor \ HD 9/20-4 \*KAP \ Spare parts list high-pressure 9/20-4 TR \ Cylinder head pressure switch complete 2



POS	Article no.	Description	Quantity	Unit
902	5.901-227.0	Assembly mandril	1	PC
1	9.751-085.0	Cylinder head pressure switch only for r	1	PC
7	9.761-067.0	Drain plug G 1/2"	1	PC
17	9.761-057.0	Drain plug G 3/8"	1	PC
905	6.101-265.0	Excess-current with valve seat	1	PC
901	5.901-226.0	Fitting case	1	PC
25	9.761-237.0	Handle	1	PC
906	9.761-106.0	HD seal D 18	1	PC
	<b>Item text1:</b> replaced by 6.365-493.3			
16	9.761-007.0	Joint ring G 3/8"	1	PC
5	9.761-108.0	ND seal D 18	1	PC
	<b>Item text1:</b> replaced by 6.365-495.3			
12	9.760-107.0	O-Ring seal 16 x 2 - NBR 80 (9.081-406)	6	PC
30	9.761-004.0	O-Ring seal 17.13 x 2.62	1	PC
2	9.761-107.0	O-Ring seal 28.30 x 1.78	3	PC
9	9.761-104.0	O-Ring seal D 15.54x2.62	6	PC
903	9.751-027.0	Piston complete only for replacement	1	PC
15	9.761-064.0	Pressure spring	1	PC
904	9.751-030.0	Pressure switch complete only for replac	1	PC
14	9.761-613.0	Screw plug TR	1	PC
8	9.761-105.0	Seal G 1/2"	1	PC
3	9.761-075.0	Seat D 18x26	3	PC
906	6.365-493.0	Set of gaskets high-pressure W1	1	PC
	<b>Item text1:</b> replaced by 6.365-493.3			
906	6.365-493.3	Set of gaskets high-pressure W1	1	PC
	<b>Item text1:</b> successor of 9.761-106.0			
5	6.365-495.3	Set of gaskets low-pressure W2	1	PC
	<b>Item text1:</b> successor of 9.761-108.0			
11	9.751-004.0	Valve complete	6	PC
13	9.761-319.0	Valve screw inside hexagon M24x1.5	6	PC
907	9.761-056.0	Washer D 18 x 28	3	PC