

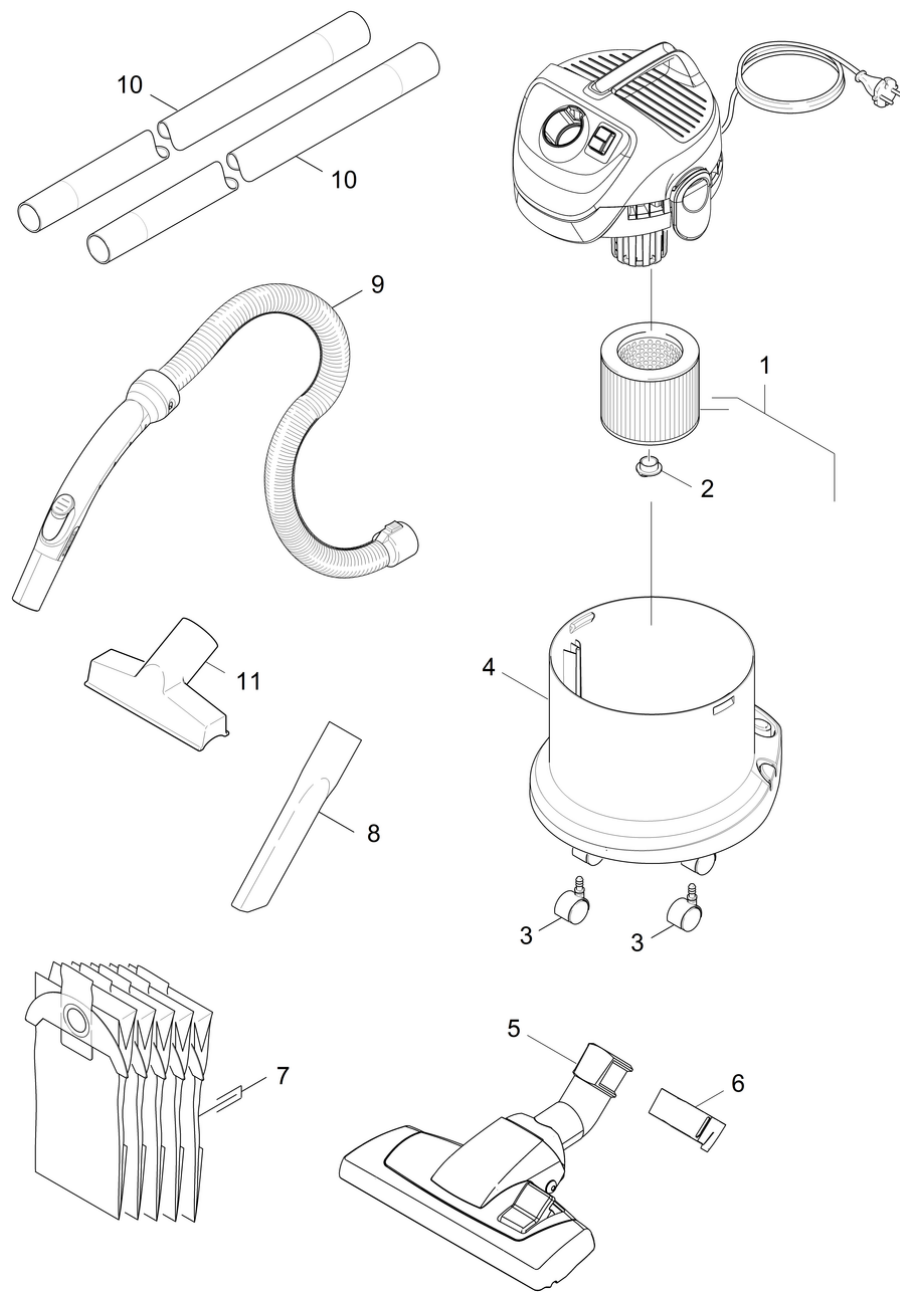
Spare parts list

(1.629-773.0) WD 2 Home *EU-II

Table of contents

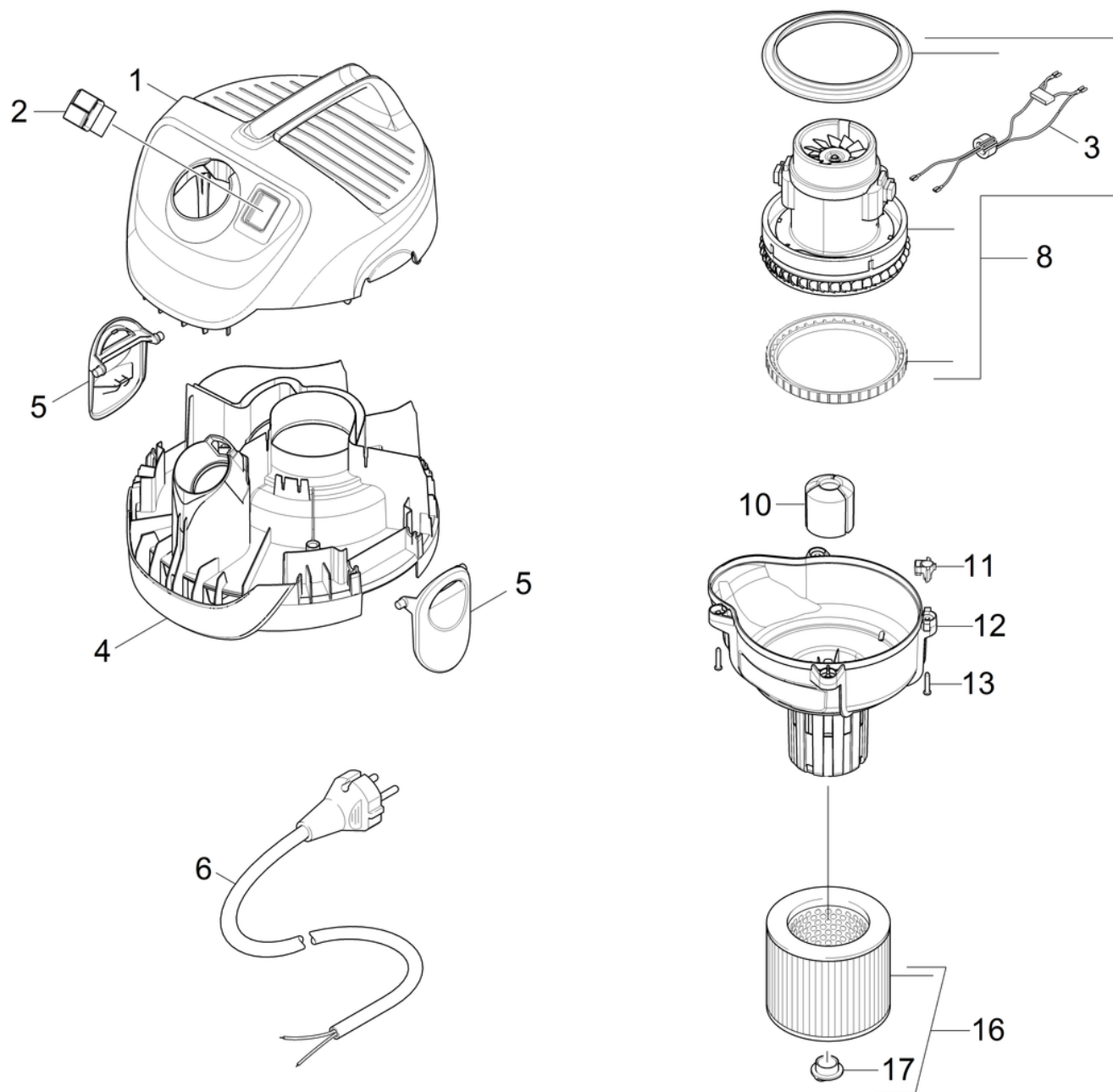
WD 2 Home *EU-II (1.629-773.0)	3
Short spare parts list	4
10 Appliance individual parts	6
8 Vacuum motor complete for replacement Cu (4.490-000.0)	8
16 Cartridge filter WD/SE (6.414-552.0)	10
20 Tank	12
30 Accessories	14

POS	Description	Quantity	Unit
30	Accessories	1.000	ST
10	Appliance individual parts	1.000	ST
0	Short spare parts list	1.000	ST
20	Tank	1.000	ST



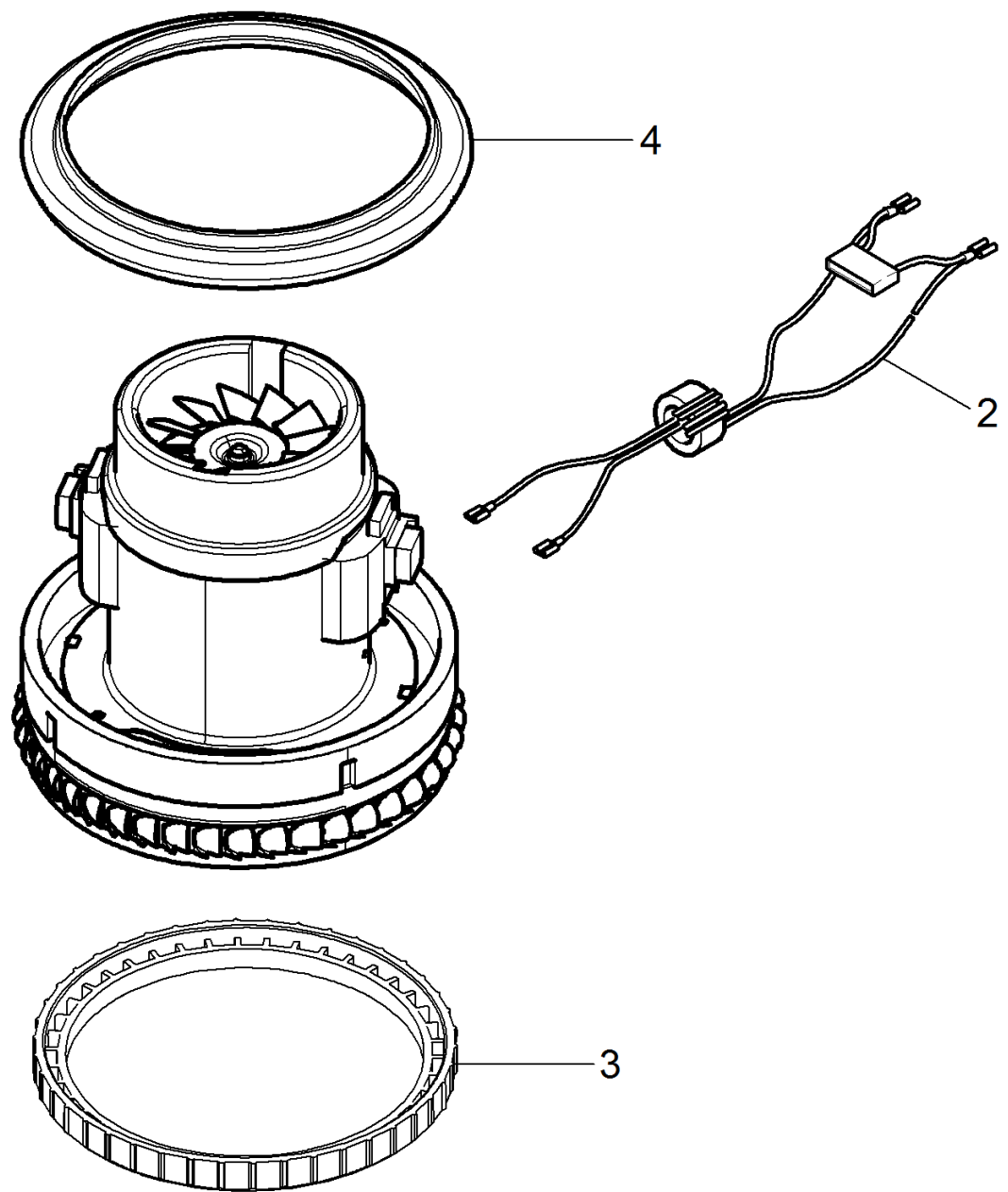
Short spare parts list

POS	Article no.	Description	Quantity	Unit
1	6.414-552.0	Cartridge filter WD/SE	1.000	ST
3	6.435-353.0	Castor D 42	4.000	ST
6	5.629-014.0	Clip	1.000	ST
2	4.075-012.0	Closure complete	1.000	ST
8	6.900-385.0	Crevice nozzle DN35	1.000	ST
10	2.863-148.0	Extension suction tube WD	2.000	ST
7	6.904-322.0	Filter bag WD 5pc.	1.000	ST
5	4.629-020.0	Floor tool for replacement packaged	1.000	ST
9	9.012-109.0	Suction hose complete DN35x2	1.000	ST
4	5.070-667.0	Tank	1.000	ST
11	6.905-998.0	Upholstery nozzle complete NW35	1.000	ST



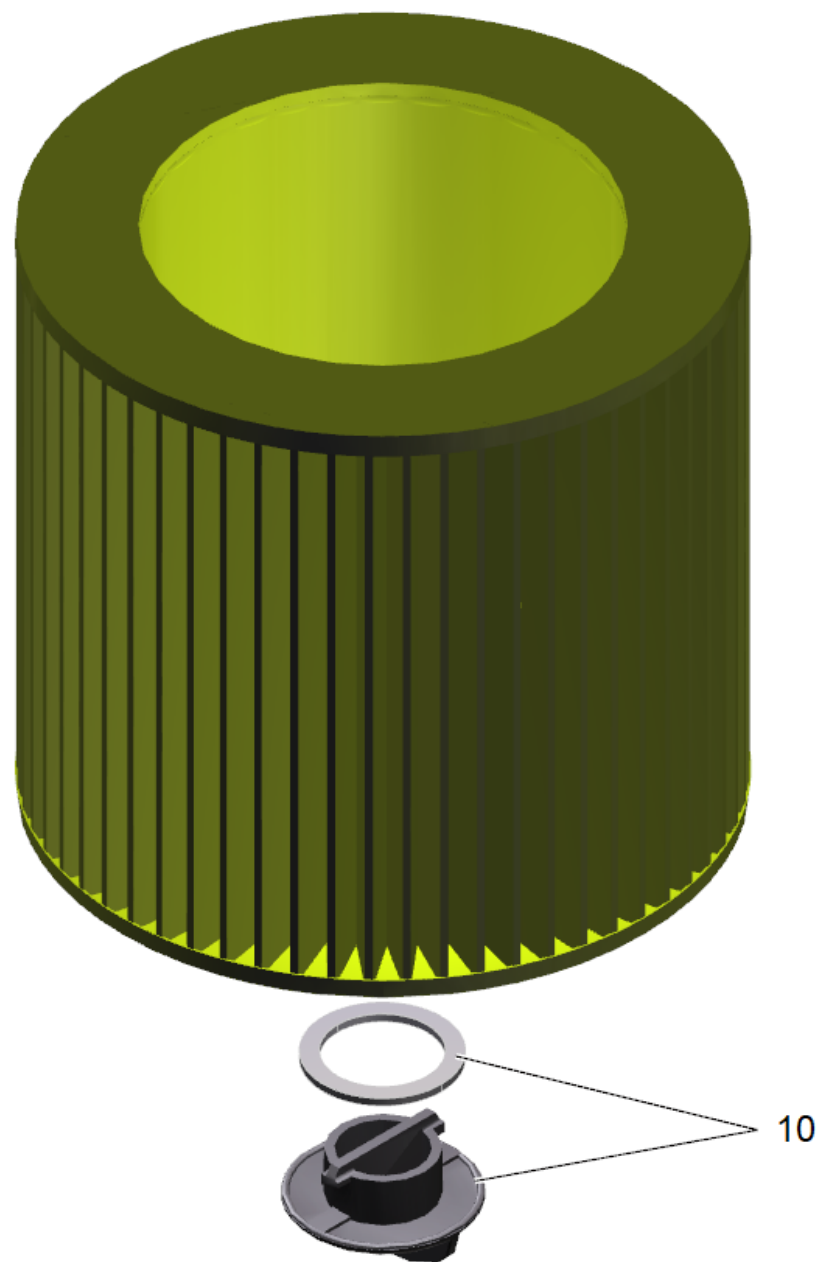
10 Appliance individual parts

POS	Article no.	Description	Quantity	Unit	Remark
6	6.647-996.0	Cable with plug *EU Cable with plug	1.000	ST	*EU
16	6.414-552.0	Cartridge filter WD/SE	1.000	ST	
5	5.075-033.0	Closure	2.000	ST	
17	4.075-012.0	Closure complete	1.000	ST	
1	5.069-312.0	Cover neutrally WD 2 / WD 2.XXX	1.000	ST	
12	5.731-647.0	Filtering basket	1.000	ST	
10	5.585-054.0	Floater	1.000	ST	
4	5.053-184.0	Motor bracket	1.000	ST	
11	5.034-734.0	Retaining bracket	1.000	ST	
13	6.303-150.0	Screw 4,2x 22	4.000	ST	
3	2.884-253.0	Set cable ferrite ring	1.000	ST	
2	6.630-087.0	Switch	1.000	ST	
8	4.490-000.0	Vacuum motor complete for replacement Cu	1.000	ST	



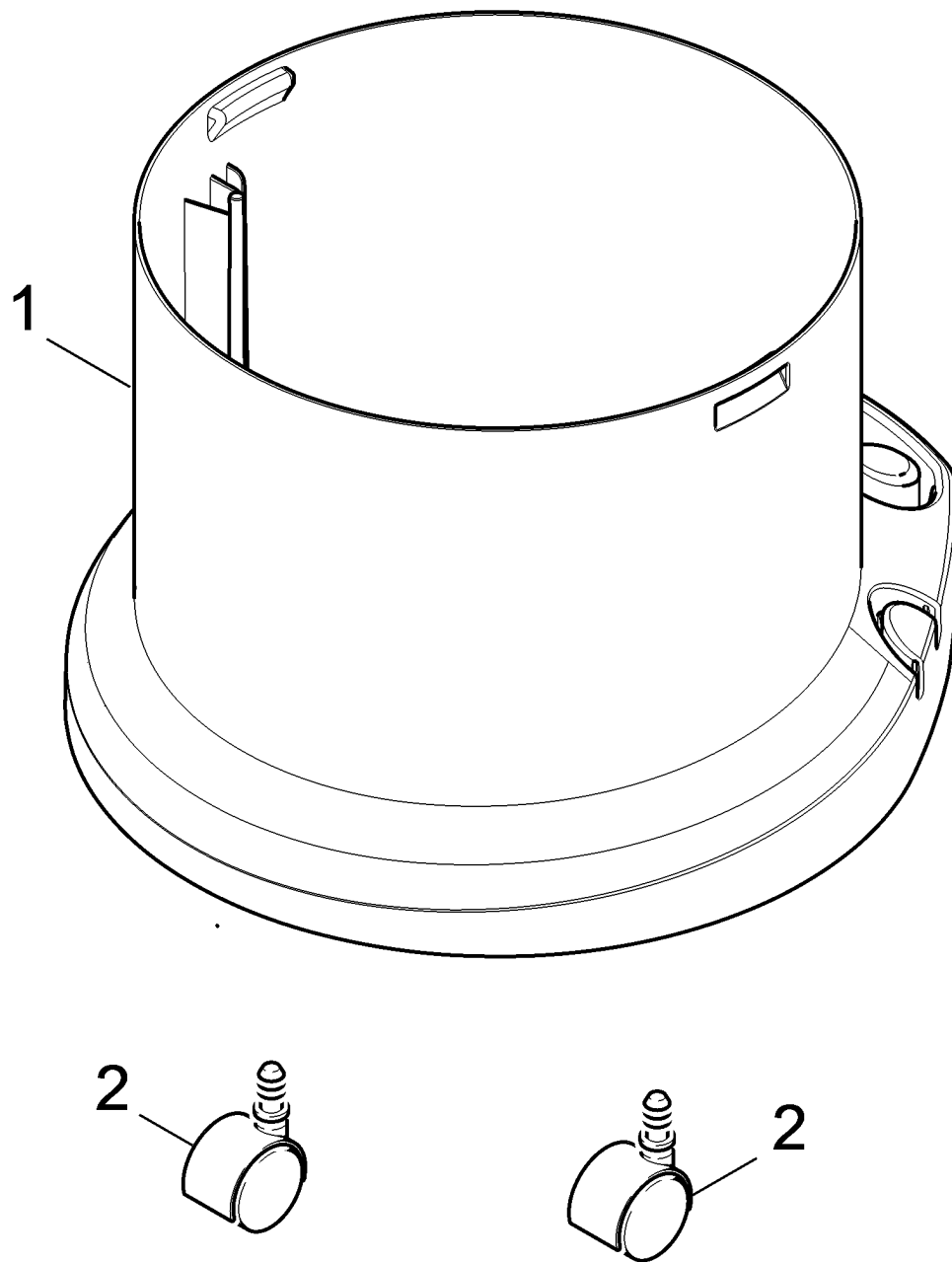
8 Vacuum motor complete for replacement Cu (4.490-000.0)

POS	Article no.	Description	Quantity	Unit
3	5.365-324.0	Bearing motor height compensation	1.000	ST
2	4.649-087.0	Cable ferrite ring complete DNA	1.000	ST
4	9.079-024.0	Seal motor above	1.000	ST



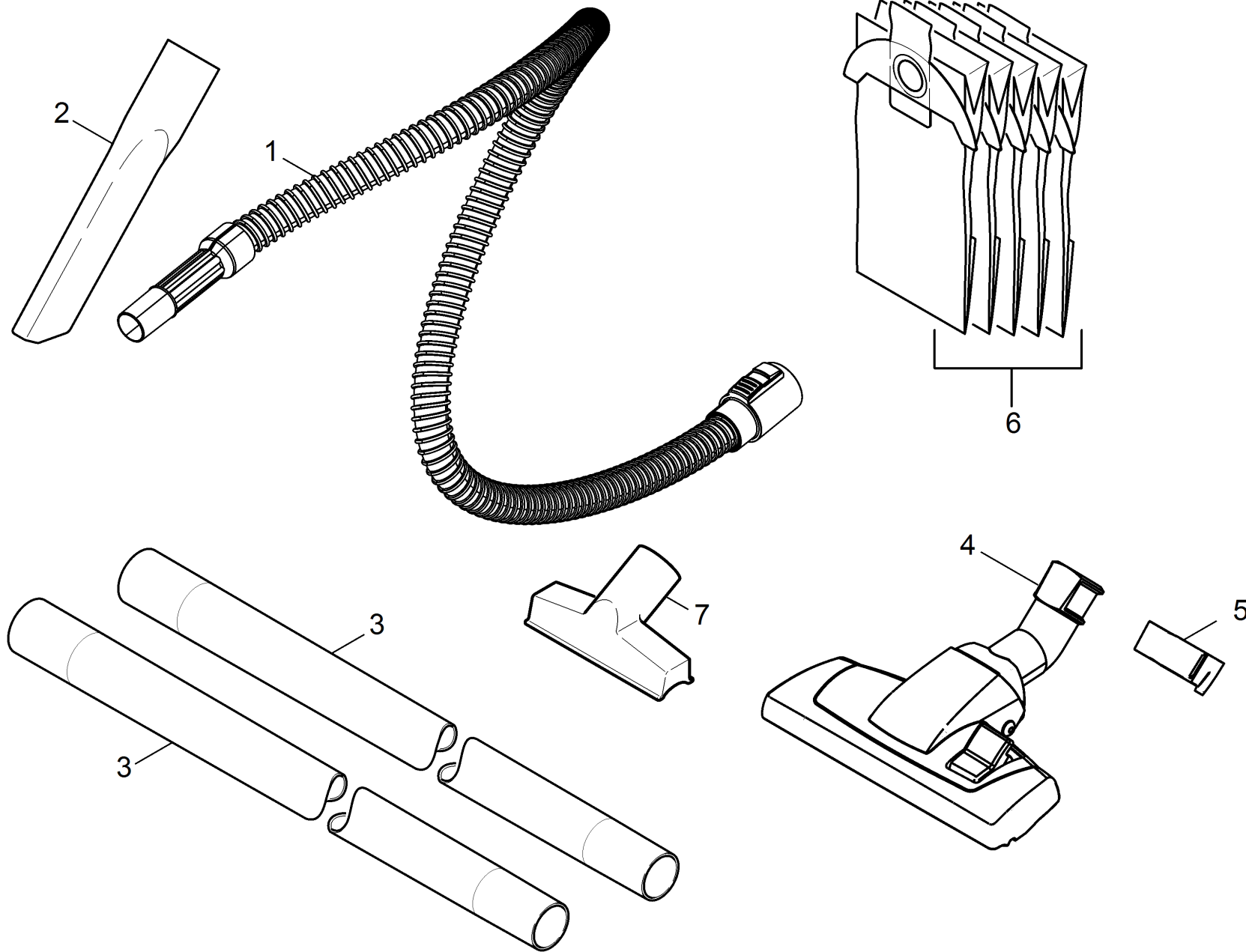
16 Cartridge filter WD/SE (6.414-552.0)

POS	Article no.	Description	Quantity	Unit
10	4.075-012.0	Closure complete	1.000	ST



20 Tank

POS	Article no.	Description	Quantity	Unit
2	6.435-353.0	Castor D 42	4.000	ST
1	5.070-667.0	Tank	1.000	ST



30 Accessories

POS	Article no.	Description	Quantity	Unit
5	5.629-014.0	Clip	1.000	ST
2	6.900-385.0	Crevice nozzle DN35	1.000	ST
3	2.863-148.0	Extension suction tube WD	2.000	ST
6	6.904-322.0	Filter bag WD 5pc.	1.000	ST
4	4.629-020.0	Floor tool for replacement packaged	1.000	ST
1	4.441-084.0	Suction hose complete packaged	1.000	ST
7	6.905-998.0	Upholstery nozzle complete NW35	1.000	ST