

Spare parts list

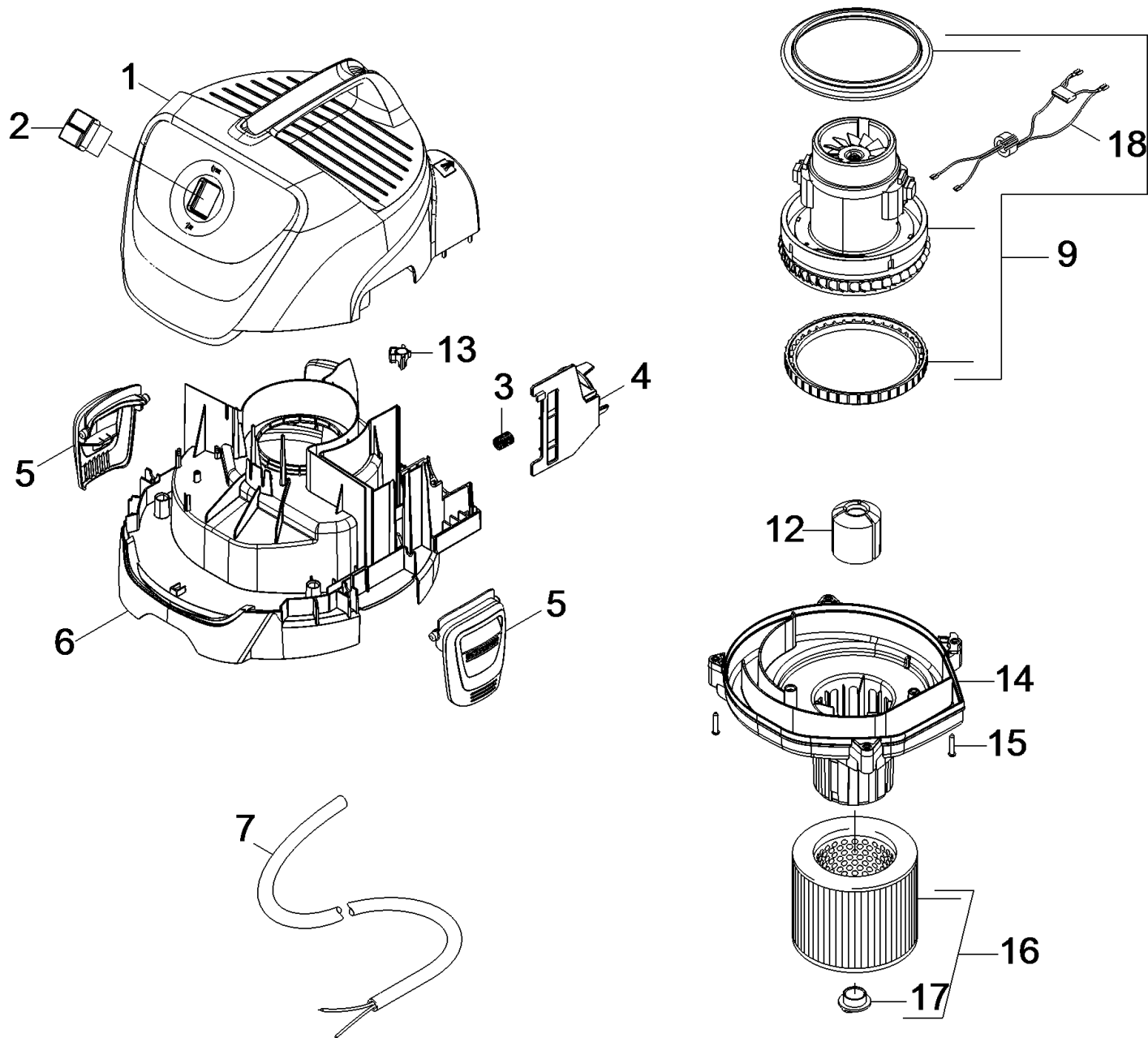
(1.629-820.0) WD 3 *EU-I

Table of contents

WD 3 *EU-I (1.629-820.0)	3
10 Appliance individual parts	4
9 Vacuum motor complete for replacement Cu (4.490-000.0)	6
16 Cartridge filter WD/SE (6.414-552.0)	8
20 Tank	10
1 Tank plastics packaged (4.440-010.0)	12
30 Accessories	14

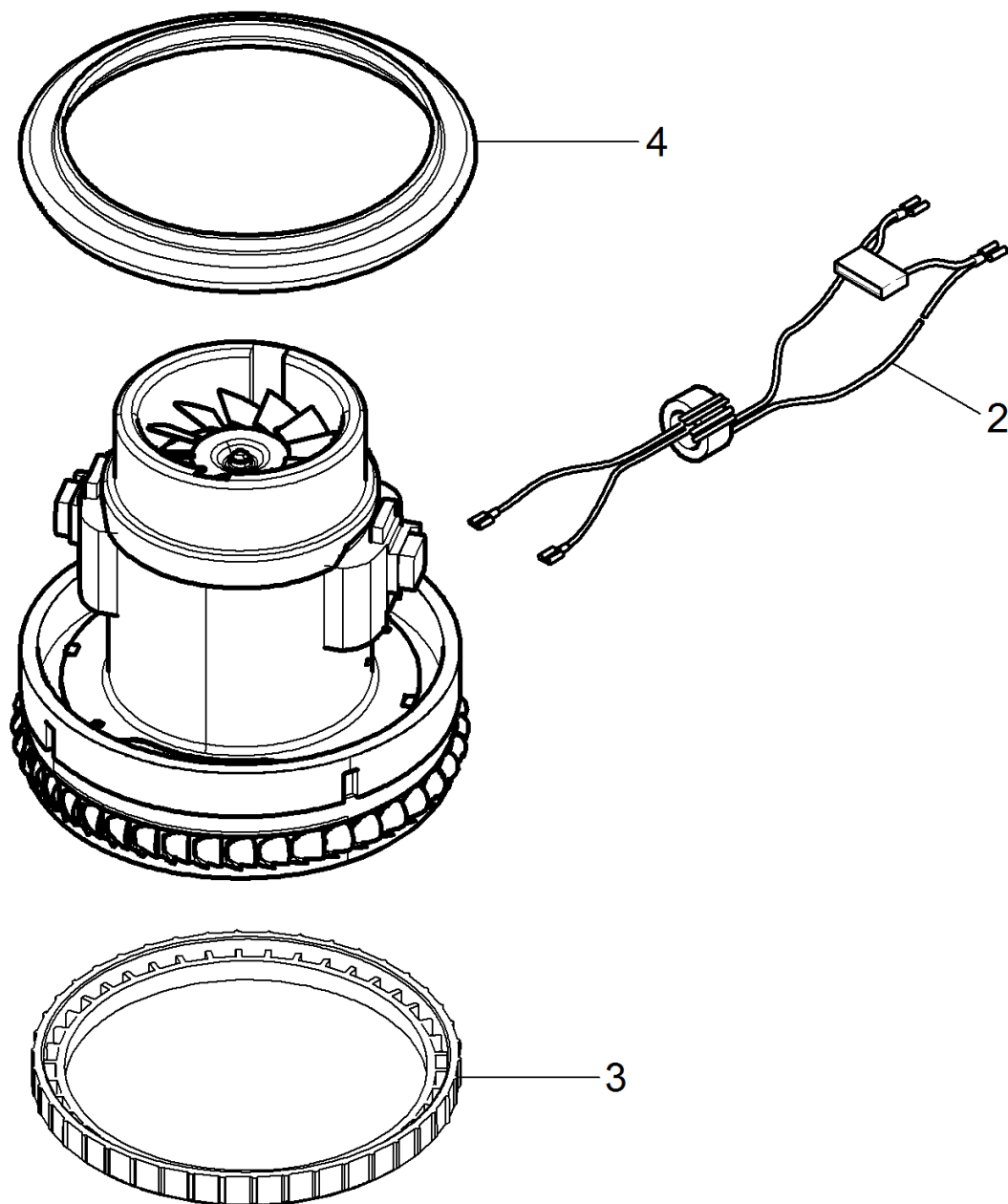
WD 3 *EU-I (1.629-820.0)

POS	Description	Quantity	Unit
10	Appliance individual parts	1	PC
20	Tank	1	PC
30	Accessories	1	PC



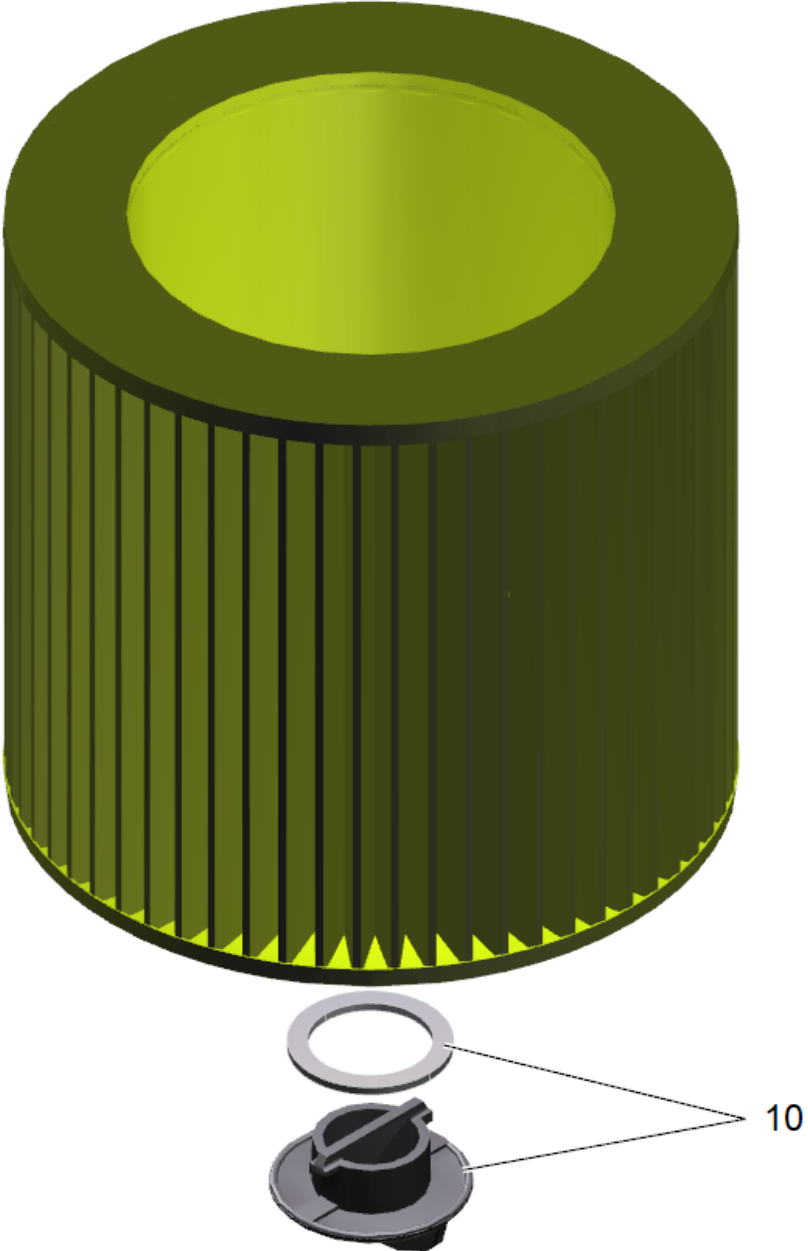
10 Appliance individual parts

POS	Article no.	Description	Quantity	Unit	Remark
1	5.069-310.0	Cover WD 3 / WD 3.XXX neutral	1	PC	
2	6.630-087.0	Switch	1	PC	
3	5.332-997.0	Helical spring	1	PC	
4	5.640-363.0	Slider	1	PC	
5	5.075-037.0	Closure	2	PC	
6	5.053-183.0	Motor bracket	1	PC	
7	6.647-996.0	Cable with plug *EU Cable with plug	1	PC	*EU
9	4.490-000.0	Vacuum motor complete for replacement Cu	1	PC	
12	5.585-062.0	Float ECO	1	PC	
13	5.034-734.0	Retaining bracket	1	PC	
14	5.731-646.0	Filter cage	1	PC	
15	6.303-150.0	Screw 4,2x 22	6	PC	
16	6.414-552.0	Cartridge filter WD/SE	1	PC	
17	4.075-012.0	Closure complete	1	PC	
18	2.884-253.0	Set cable ferrite ring	1	PC	



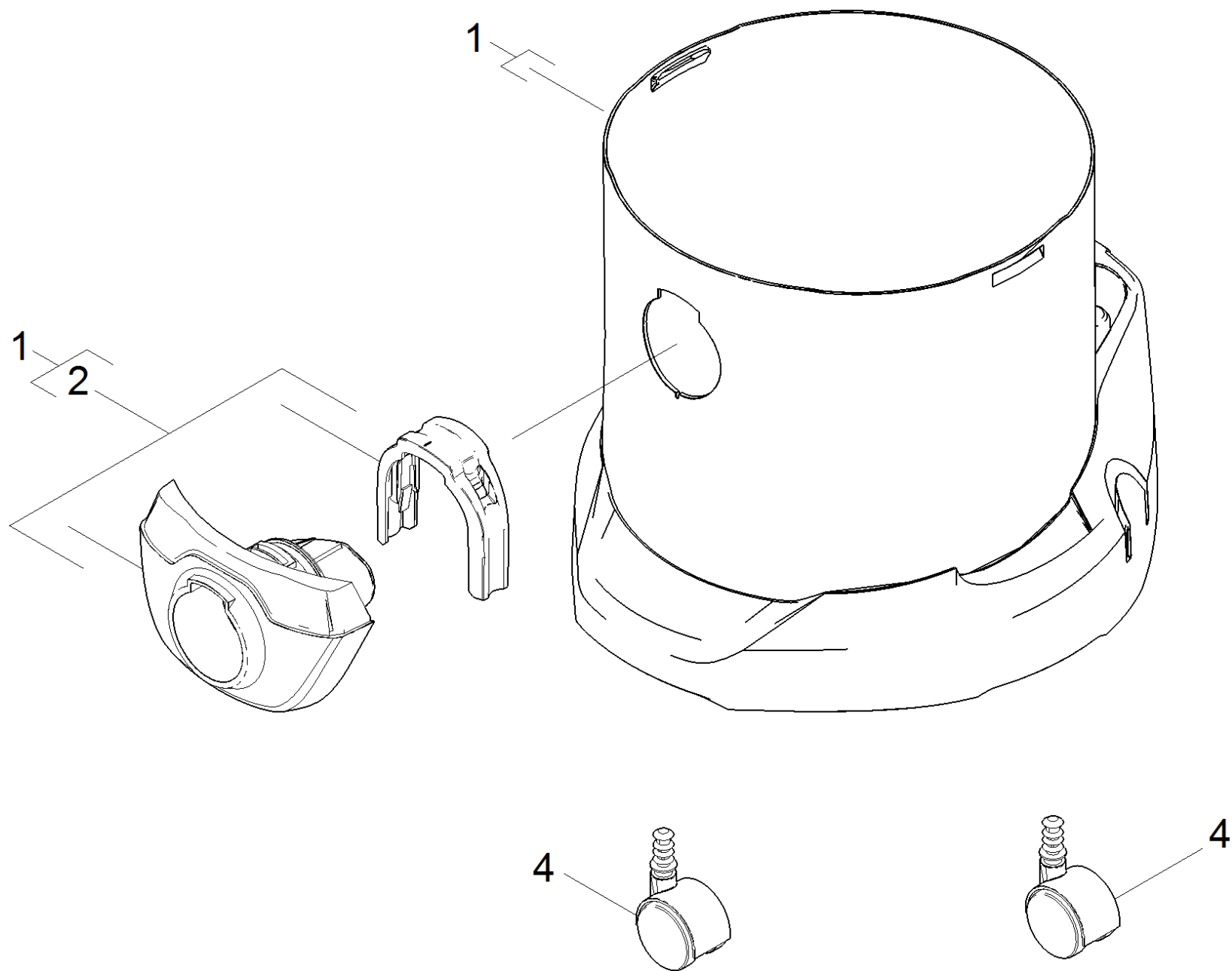
9 Vacuum motor complete for replacement Cu (4.490-000.0)

POS	Article no.	Description	Quantity	Unit
2	4.649-087.0	Cable ferrite ring complete DNA	1	PC
3	5.365-324.0	Bearing motor height compensation	1	PC
4	9.079-024.0	Seal motor above	1	PC



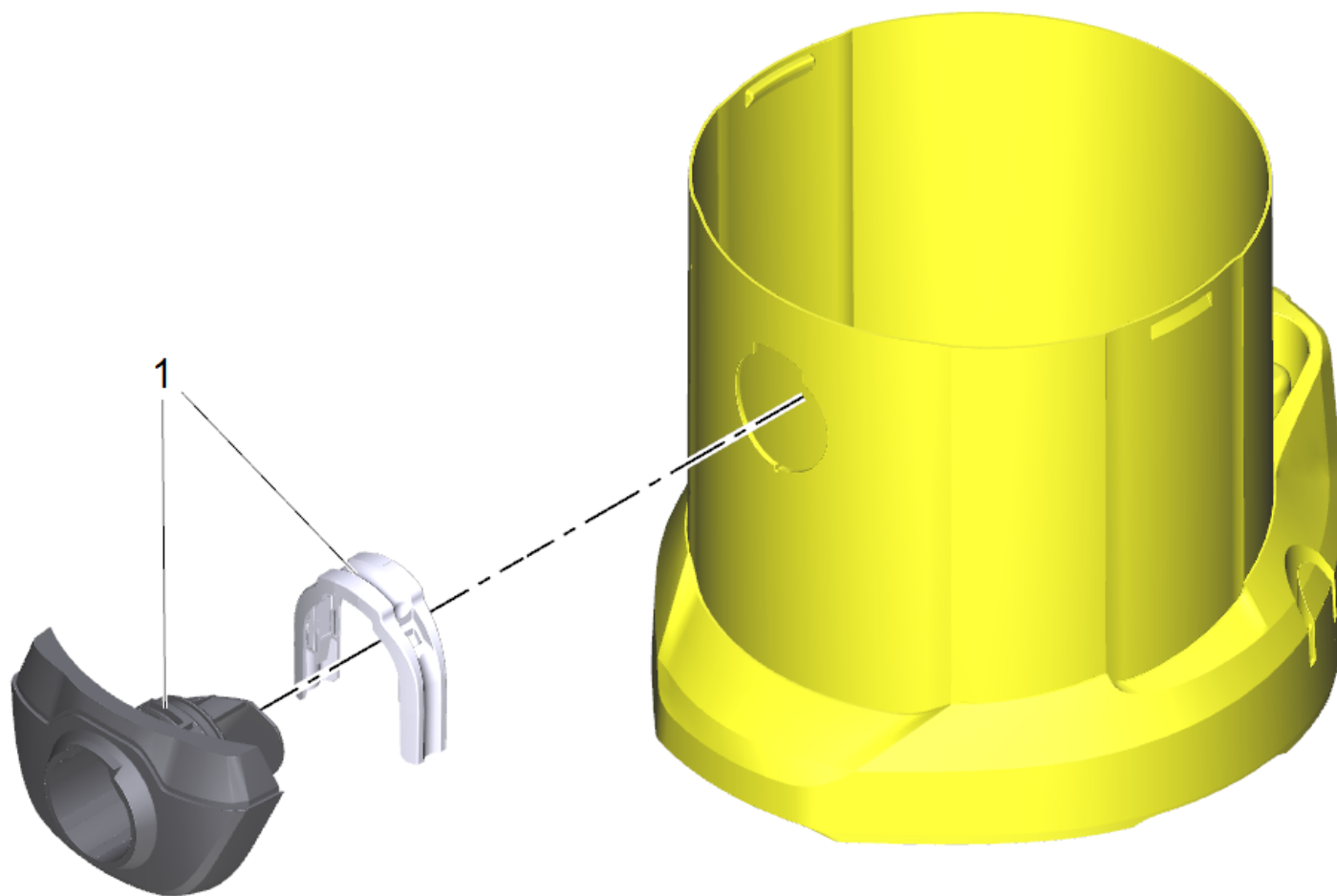
16 Cartridge filter WD/SE (6.414-552.0)

POS	Article no.	Description	Quantity	Unit
10	4.075-012.0	Closure complete	1	PC



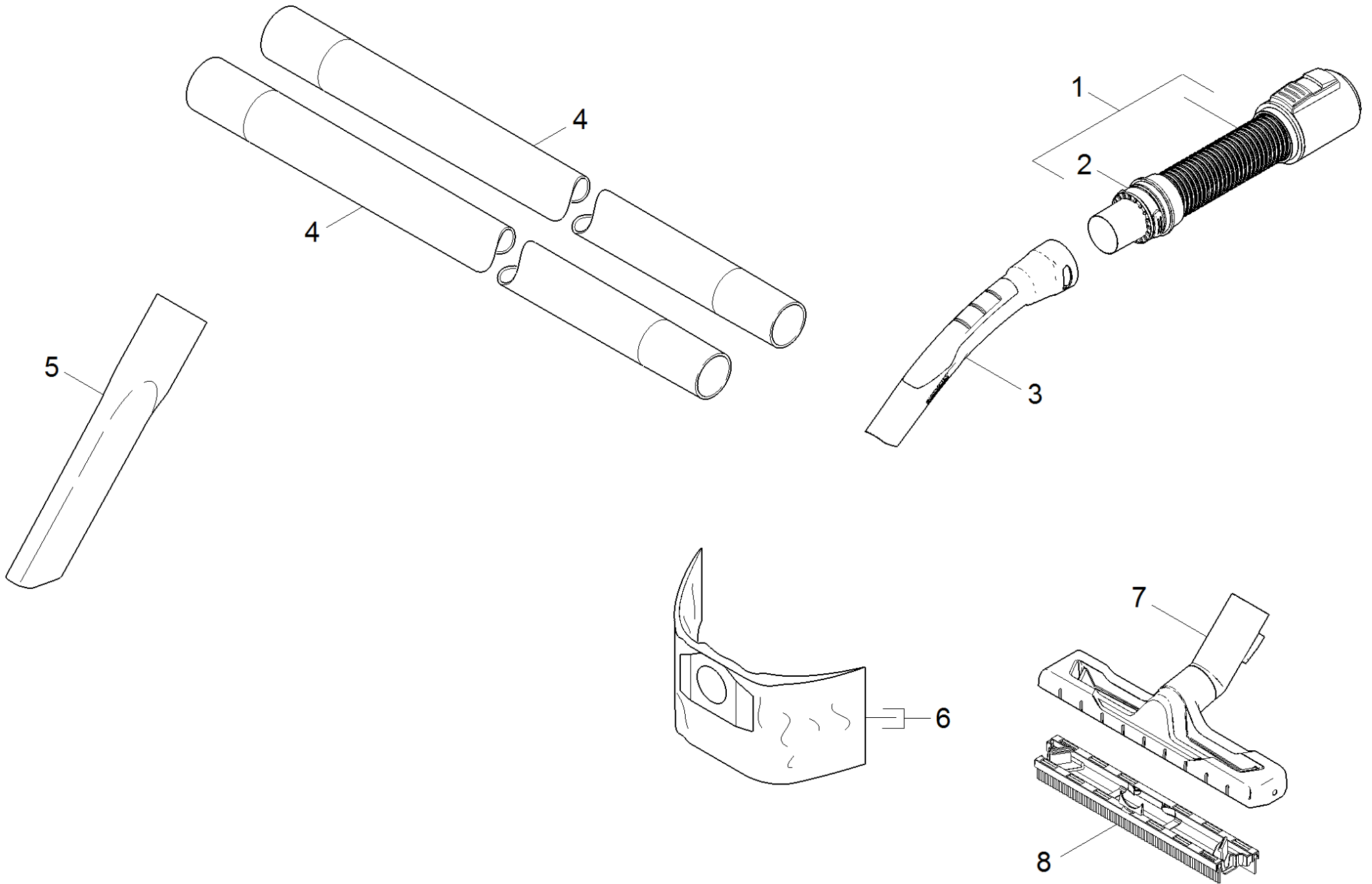
20 Tank

POS	Article no.	Description	Quantity	Unit
1	4.440-010.0	Tank plastics packaged	1	PC
2	2.885-402.0	Suction connection complete packaged	1	PC
4	6.435-353.0	Castor D 42	4	PC



1 Tank plastics packaged (4.440-010.0)

POS	Article no.	Description	Quantity	Unit
1	2.885-402.0	Suction connection complete packaged	1	PC



30 Accessories

POS	Article no.	Description	Quantity	Unit
1	4.441-066.0	Hose complete packaged	1	PC
2	6.645-688.0	Spring washer suction hose	1	PC
3	2.863-012.0	Hand grip suction hose	1	PC
4	2.863-308.0	Extension suction tube WD ID 35	2	PC
5	6.900-385.0	Crevice nozzle DN35	1	PC
6	6.959-130.0	Filter bag WD/SE 5pc.	1	ZSA
7	4.629-013.0	Floor tool clip packaged	1	PC
8	4.629-014.0	Insert wet floor nozzle packaged	1	PC
8	4.629-015.0	Insert dry floor nozzle packaged	1	PC
8	4.629-016.0	Mixing insert floor nozzle packaged	1	PC