

## **Spare parts list**

(1.517-213.0) KM 70/30 C Bp Pack Adv

## Table of contents

---

KM 70/30 C Bp Pack Adv (1.517-213.0)	3
216 Spare parts list KM 70/30 C Bp Pack Adv (5.972-399.0)	4
10 Individual parts	5
20 Transmission	10
1 Wheel complete (4.515-355.0)	13
5 Pinion sprag clutch complete rechts (4.040-791.0)	15
36 Belt pulley complete (4.040-816.0)	16
30 Side broom	17

KM 70/30 C Bp Pack Adv (1.517-213.0)

---

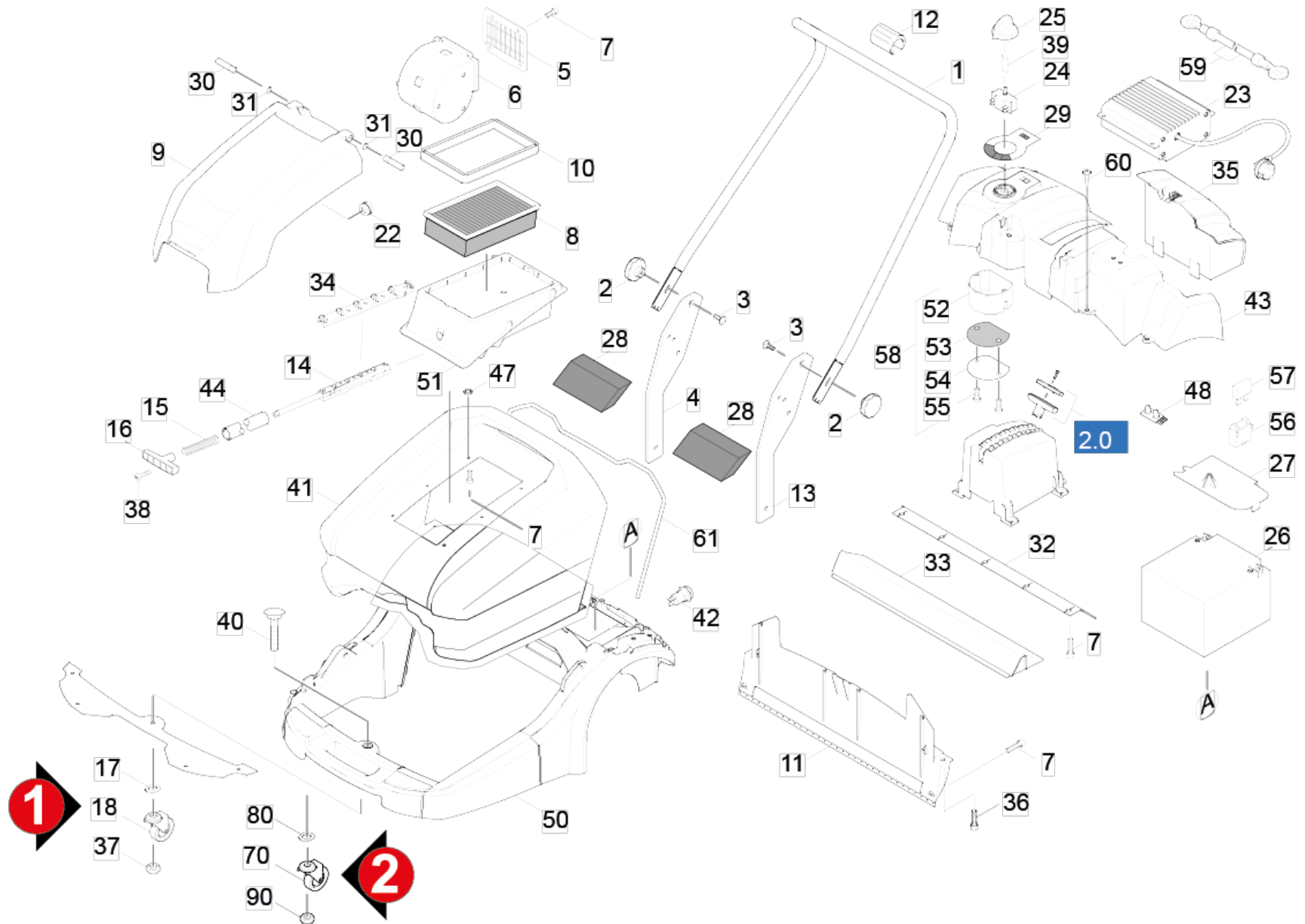
<b>POS</b>	<b>Article no.</b>	<b>Description</b>	<b>Quantity</b>	<b>Unit</b>
216	5.972-399.0	Spare parts list KM 70/30 C Bp Pack Adv	1.000	ST

216 Spare parts list KM 70/30 C Bp Pack Adv (5.972-399.0)

---

<b>POS</b>	<b>Description</b>	<b>Quantity</b>	<b>Unit</b>
10	Individual parts	1.000	ST
30	Side broom	1.000	ST
20	Transmission	1.000	ST





## 10 Individual parts

POS	Article no.	Description	Quantity	Unit	Foot note text
26	6.654-202.0	Battery 12V 22AH	1.000	ST	
23	6.654-203.0	Battery charger	1.000	ST	
6	6.484-328.0	Blower completely	1.000	ST	
	<b>Item text1:</b> 1.517-202/-203				
30	5.317-184.0	Bolt with groove	2.000	ST	
59	4.041-025.0	Cable complete 500 mm	1.000	ST	
70	6.966-068.0	Castor	1.000	ST	VERSION 2
18	6.435-027.0	Castor D 75	1.000	ST	VERSION 1
48	6.682-776.0	Circuit board LED BR/BD 40/25	1.000	ST	
12	6.373-867.0	Clamp	1.000	ST	
58	2.641-769.0	Conversion kit dust protection switch	1.000	ST	
54	5.010-109.0	Cover	1.000	ST	
35	5.654-073.0	Cover batterie shed	1.000	ST	
27	5.032-928.0	Covering cap battery	1.000	ST	
43	5.068-000.0	Cover with hinge	1.000	ST	
51	5.033-914.0	Filter box	1.000	ST	
28	5.731-625.0	Filter cartridge for KM 70/30 C	2.000	ST	
14	5.032-907.0	Filter vibrator	1.000	ST	
	<b>Item text1:</b> 1.517-202.0 / -203.0 / -207.0 / -208.0				
8	6.904-367.0	Flat filter only for replacement Kaerche	1.000	ST	
	<b>Item text1:</b> 1.517-202.0 / -203.0 / -207.0 / -208.0				
29	5.391-248.0	Foil control panel KM 70/30	1.000	ST	
50	5.050-277.0	Frame KM_70/30	1.000	ST	
56	6.644-216.0	Fuse holder	1.000	ST	
57	7.644-018.0	Fuse insert C15 DIN 72581-3	1.000	ST	
32	6.903-801.0	Ground lip	1.000	ST	
16	5.322-108.0	Handhold filter vibrator	1.000	ST	
	<b>Item text1:</b> 1.517-202.0 / -203.0 / -207.0 / -208.0				
25	5.321-738.0	Handhold operational concept	1.000	ST	
15	5.332-073.0	Helical spring	1.000	ST	
	<b>Item text1:</b> 1.517-202.0 / -203.0 / -207.0 / -208.0				
90	7.311-423.0	Hexagon nut M10 -04-A2E DIN 985	1.000	ST	VERSION 2
37	7.311-511.0	Hexagon nut M10-8-A2E ISO 7040	1.000	ST	VERSION 1

## 10 Individual parts

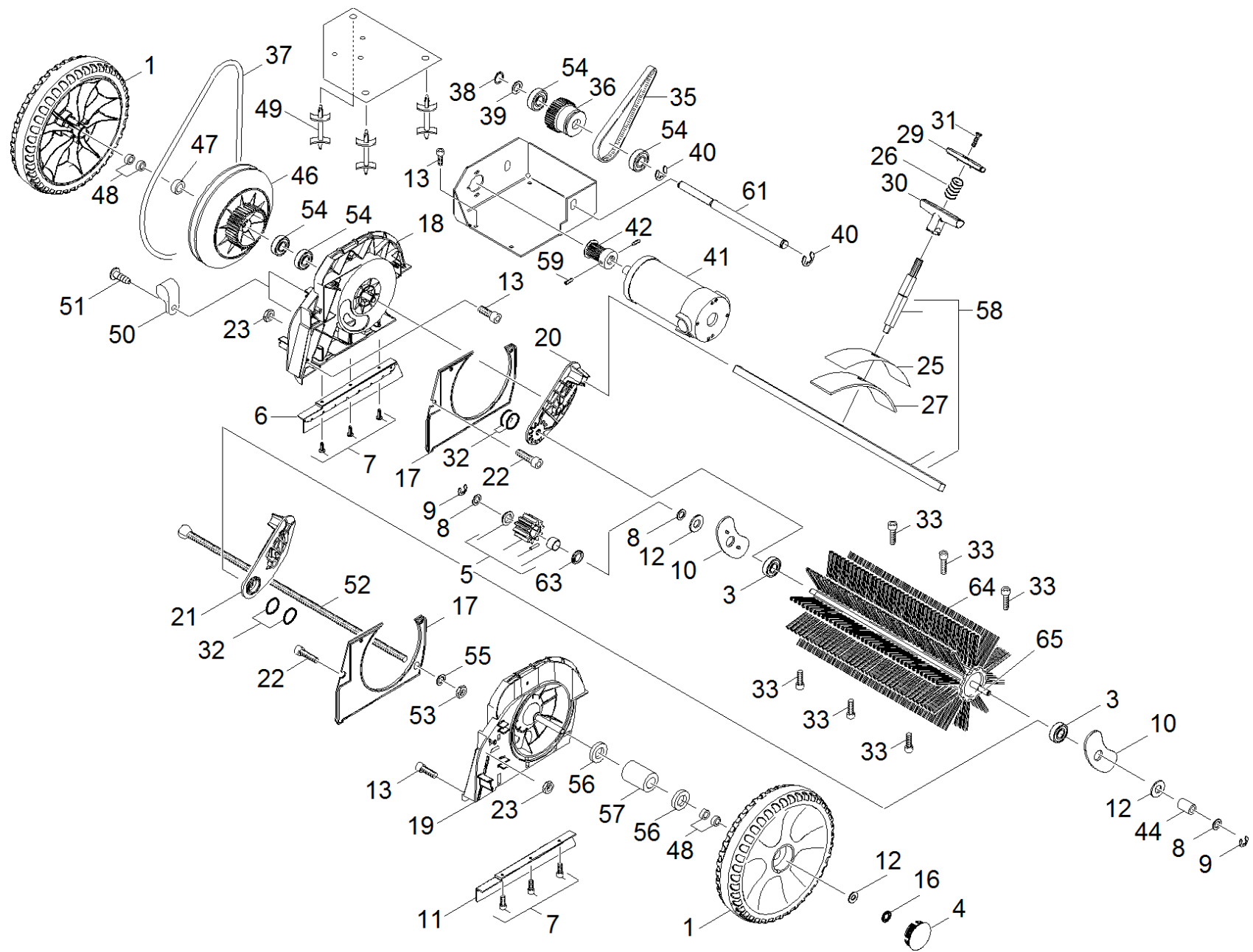
POS	Article no.	Description	Quantity	Unit	Foot note text
33	6.903-800.0	Holder ground lips sweep tank	1.000	ST	
47	6.472-969.0	Joint ring	6.000	ST	
31	7.343-302.0	Lock washer 8 -St-ph DIN 6799	2.000	ST	
9	5.215-003.0	Moulded part flap blower	1.000	ST	
	<b>Item text1:</b> 1.517-202.0 / -203.0 / -207.0 / -208.0				
42	6.646-697.0	Plug socket battery charger external	1.000	ST	
	<b>Item text1:</b> 1.517-201.0 / -202.0				
61	6.365-371.0	Profile gasket	1.000	M	
5	5.394-776.0	Protection part blower	1.000	ST	
	<b>Item text1:</b> 1.517-202.0 / -203.0 / -207.0 / -208.0				
11	5.032-641.0	Rear skirting	1.000	ST	
3	7.303-194.0	Saucer-head screw M8x25-St-A0P DIN 603	2.000	ST	
40	7.303-222.0	Saucer-head screw M10x80 -St-A0P DIN 60	1.000	ST	
38	7.303-129.0	Screw 4x16 -10.9-R2R (K-In6Rd)	1.000	ST	
	<b>Item text1:</b> 1.517-202.0 / -203.0 / -207.0 / -208.0				
55	7.303-129.0	Screw 4x16 -10.9-R2R (K-In6Rd)	2.000	ST	
7	7.303-107.0	Screw 5x16 -10.9-P2R (K-In6Rd)	16.000	ST	
36	7.303-086.0	Screw 5x30 -10.9-R2R (K-In6Rd)	6.000	ST	
60	7.303-112.0	Screw 6x20 -10.9-R2R (In6Rd)	16.000	ST	
10	6.365-514.0	Seal	1.000	M	
	<b>Item text1:</b> 1.517-202.0 / -203.0 / -207.0 / -208.0				
53	6.640-271.0	Seal	1.000	ST	
13	5.057-855.0	Sheet metal component left	1.000	ST	
4	5.057-790.0	Sheet metal component right	1.000	ST	
39	6.313-014.0	Spring element	1.000	ST	
34	5.030-900.0	Stripper	1.000	ST	
	<b>Item text1:</b> 1.517-202.0 / -203.0 / -207.0 / -208.0				
41	4.070-955.0	Sweep tank complete replacement	1.000	ST	
	<b>Item text1:</b> 1.517-202.0 / -203.0 / -207.0 / -208.0				
24	6.635-549.0	Switch control panel	1.000	ST	
52	5.010-108.0	Tin dust protection	1.000	ST	
44	5.027-291.0	Tube filter vibrator	1.000	ST	
1	5.128-775.0	Tube shearing shackle	1.000	ST	



## 10 Individual parts

---

<b>POS</b>	<b>Article no.</b>	<b>Description</b>	<b>Quantity</b>	<b>Unit</b>	<b>Foot note text</b>
2	6.321-177.0	Turning knob yellow D55mm	2.000	ST	
17	7.312-005.0	Washer 10-200HV-A3E ISO 7089	2.000	ST	VERSION 1
80	7.312-005.0	Washer 10-200HV-A3E ISO 7089	4.000	ST	VERSION 2
22	6.641-638.0	Wire protecting sleeve	1.000	ST	

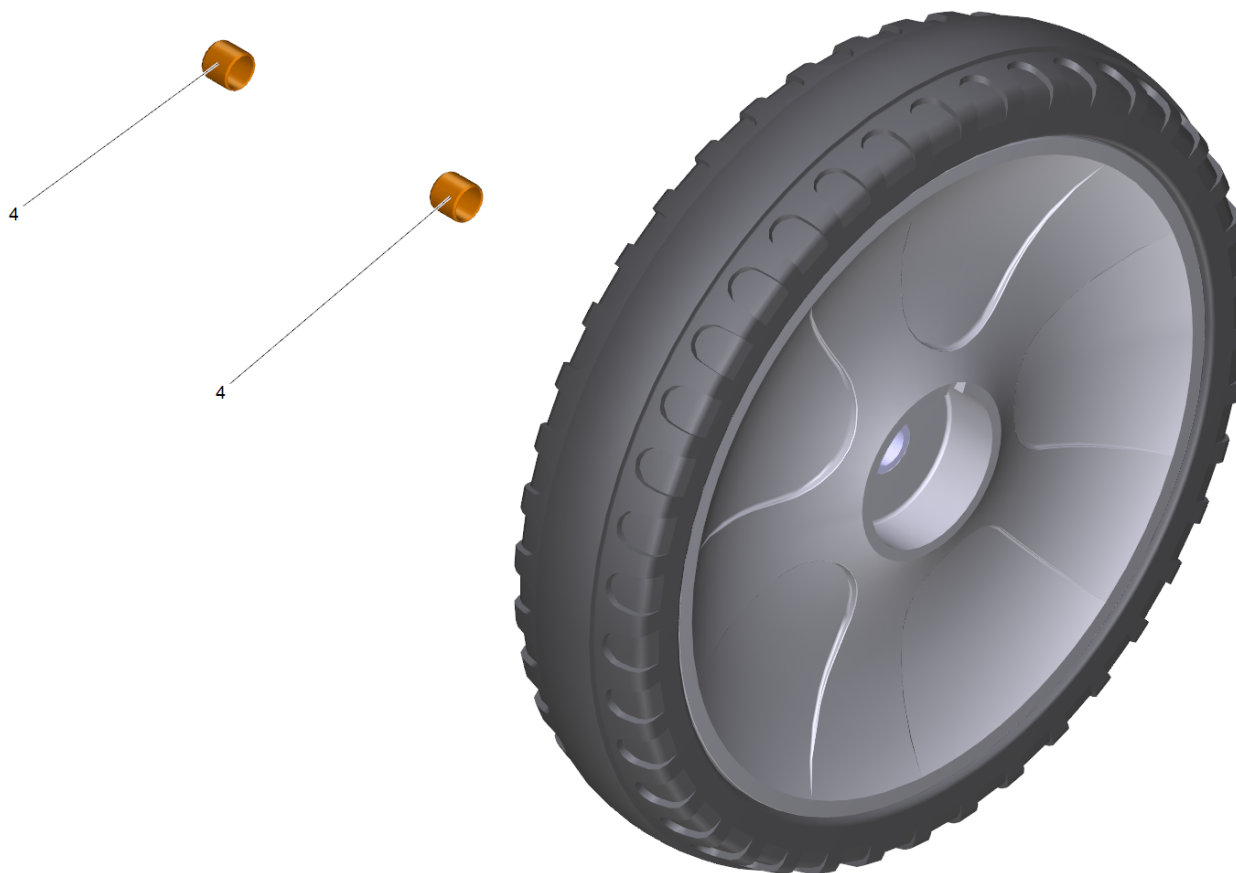


## 20 Transmission

POS	Article no.	Description	Quantity	Unit	Foot note text
58	4.021-179.0	Angle complete	1.000	ST	
19	5.032-917.0	Axle drum left	1.000	ST	
18	5.032-906.0	Axle drum right	1.000	ST	
3	7.401-008.0	Ball bearing 6001-2RS-EDELSTAHL DIN 625	2.000	ST	
54	7.401-054.0	Ball bearing 6001-2RS W-St. DIN 625-1	4.000	ST	
46	5.625-467.0	Belt pulley	1.000	ST	
36	4.040-816.0	Belt pulley complete	1.000	ST	
29	5.326-028.0	Button	1.000	ST	
50	6.641-460.0	Cable clamp	2.000	ST	
31	7.305-050.0	Countersunk screw M5x20 -A2-70-s (In6Rd	1.000	ST	
17	5.032-653.0	Covering cap	2.000	ST	
49	6.646-698.0	Distance holder	3.000	ST	
41	6.613-324.0	Electric motor 12V 150W	1.000	ST	
10	6.365-360.0	Gasket disc	2.000	ST	
30	5.322-108.0	Handhold filter vibrator	1.000	ST	
26	5.332-481.0	Helical spring	1.000	ST	
53	7.311-425.0	Hexagon nut M6 -04-A2E DIN 985	1.000	ST	
23	7.311-200.0	Hexagon nut M6 -04-A2E ISO 4035	4.000	ST	
16	7.343-083.0	Locking ring 12x1 -FSt DIN 471	1.000	ST	
38	7.343-003.0	Locking ring 12x1-Rf-St DIN 471	1.000	ST	
9	7.343-047.0	Lock washer 10-FST-A2E DIN 6799	2.000	ST	
40	7.343-306.0	Lock washer 12-St-A2E DIN 6799	2.000	ST	
32	6.362-366.0	O-Ring seal 4,0 X 2,0	4.000	ST	
5	4.040-791.0	Pinion sprag clutch complete rechts	1.000	ST	
48	6.403-055.0	Plain bearing	4.000	ST	
25	5.008-926.0	Plate spring steel	1.000	ST	
64	6.906-041.0	Reversing rolling mill	1.000	ST	OPTION
64	6.907-023.0	Reversing rolling mill antistatic	1.000	ST	OPTION
64	6.903-999.0	Reversing rolling mill hard	1.000	ST	OPTION
64	6.903-995.0	Reversing rolling mill soft	1.000	ST	OPTION
37	6.348-028.0	Round belt D 8	1.000	ST	
51	7.303-129.0	Screw 4x16 -10.9-R2R (K-In6Rd)	2.000	ST	
7	7.303-107.0	Screw 5x16 -10.9-P2R (K-In6Rd)	14.000	ST	

## 20 Transmission

POS	Article no.	Description	Quantity	Unit	Foot note text
33	7.303-210.0	Screw 5x30 -10.9-P2R (In6Rd)	1.000	ST	
13	7.303-113.0	Screw 6x25 -10.9-R2R (In6Rd)	6.000	ST	
22	7.306-118.0	Screw M 6x35 -8.8-R3R (In6Rd)	4.000	ST	
27	5.363-630.0	Seal	1.000	ST	
4	2.889-086.0	Set wheel cap	2.000	ST	
61	5.100-635.0	Shaft	1.000	ST	
65	5.100-642.0	Shaft	1.000	ST	
8	7.343-099.0	Shim ring 12x18x0,5 -St2K50 DIN 988	4.000	ST	
11	5.394-803.0	Skirting left	1.000	ST	
6	5.394-802.0	Skirting right	1.000	ST	
63	5.033-585.0	Sleeve	1.000	ST	
47	5.116-202.0	Spacer sleeve	1.000	ST	
44	5.110-514.0	Spacer sleeve	1.000	ST	
57	5.112-814.0	Spacer sleeve	1.000	ST	
21	5.032-643.0	Stub axle left	1.000	ST	
20	5.032-640.0	Stub axle right	1.000	ST	
59	7.307-210.0	Threaded pin M4x6-CuZn-E2E ISO 7434	2.000	ST	
52	5.309-152.0	Threaded rod	1.000	ST	
35	6.348-432.0	Toothed belt HTD 330-3M-15	1.000	ST	
42	5.625-534.0	Toothed belt pulley steel 15 Z	1.000	ST	
12	5.115-628.0	Washer	4.000	ST	
55	7.312-003.0	Washer 6 -200HV-A3E ISO 7089	1.000	ST	
39	7.312-008.0	Washer 12-200HV-A3E ISO 7089	1.000	ST	
1	4.515-355.0	Wheel complete	2.000	ST	



1 Wheel complete (4.515-355.0)

---

<b>POS</b>	<b>Article no.</b>	<b>Description</b>	<b>Quantity</b>	<b>Unit</b>
4	6.403-055.0	Plain bearing	2.000	ST

5 Pinion sprag clutch complete rechts (4.040-791.0)

---

POS	Article no.	Description	Quantity	Unit
4	5.033-585.0	Sleeve	1.000	ST

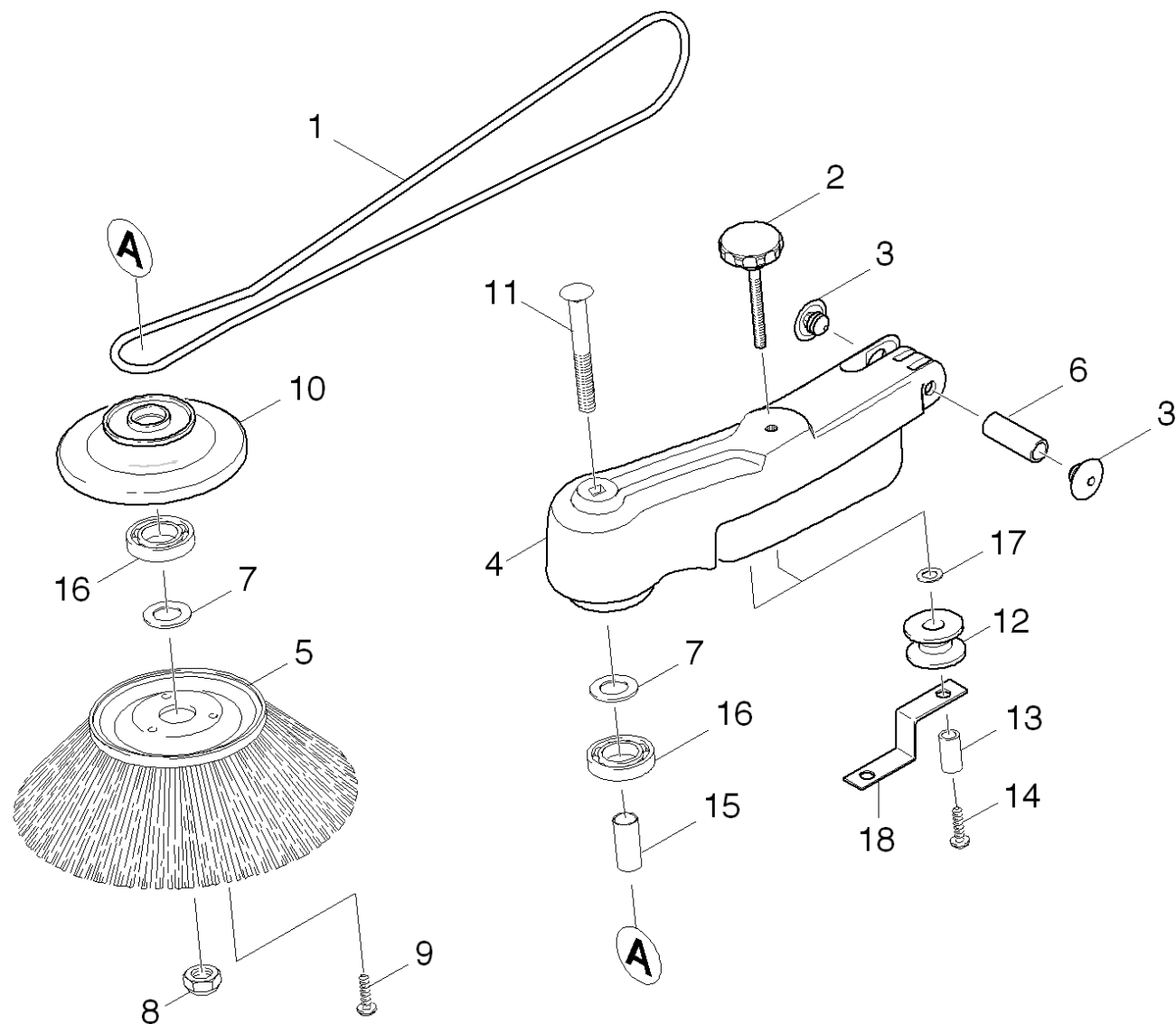
---

36 Belt pulley complete (4.040-816.0)

---

POS	Article no.	Description	Quantity	Unit
3	7.303-108.0	Screw 5x20 -10.9-R2R (In6Rd)	5.000	ST





## 30 Side broom

POS	Article no.	Description	Quantity	Unit
4	5.032-638.0	Arm side broom	1.000	ST
16	7.401-008.0	Ball bearing 6001-2RS-EDELSTAHL DIN 625	2.000	ST
12	6.997-622.0	Deflection pulley	2.000	ST
10	6.966-002.0	Flange	1.000	ST
8	7.311-511.0	Hexagon nut M10-8-A2E ISO 7040	1.000	ST
3	6.385-935.0	Plug	2.000	ST
1	6.348-020.0	Round belt	1.000	ST
11	7.303-208.0	Saucer-head screw M10x130-St-A0P DIN 60	1.000	ST
14	7.303-114.0	Screw 6 x 35-ST-10.9-R2R (IN6RD)	2.000	ST
9	6.303-092.0	Screw 6X20	3.000	ST
18	5.061-356.0	Sheet metal component belt side broom	1.000	ST
5	6.966-005.0	Side broom	1.000	ST
6	5.116-119.0	Sleeve	1.000	ST
15	6.966-020.0	Spacer sleeve 12x0,8x31	1.000	ST
13	6.966-009.0	Tube 10x1,5x16	2.000	ST
2	6.321-176.0	Turning knob yellow D55mm	1.000	ST
17	7.312-276.0	Washer 6 -200HV-A2E ISO7093-1	2.000	ST
7	7.312-153.0	Washer 10 -160HV-A3E EN28738	2.000	ST