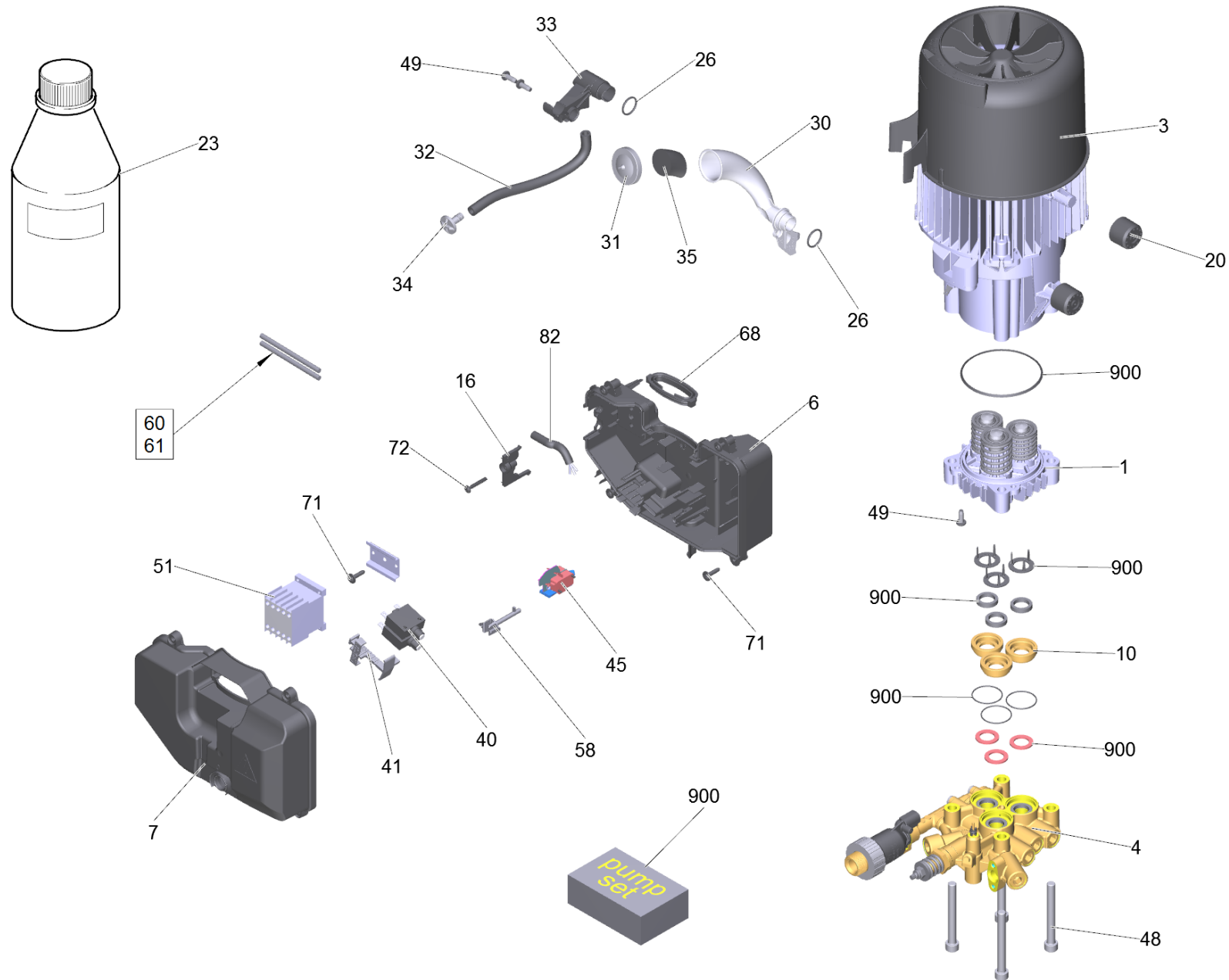


# 10 Pump set HD 8/18-4 M \*EU (D145)

Professional \ High pressure cleaner cold water \ Electric motor \ HD 8/18-4M \*EU \ Spare parts list HD 8/18-4 M \ Unit HD 8/18-4 M \ Pump set HD 8/18-4 M \*EU (D145)



# 10 Pump set HD 8/18-4 M \*EU (D145)

Professional \ High pressure cleaner cold water \ Electric motor \ HD 8/18-4M \*EU \ Spare parts list HD 8/18-4 M \ Unit HD 8/18-4 M \ Pump set HD 8/18-4 M \*EU (D145)



POS	Article no.	Description	Quantity	Unit
1		Thrust guidance complete HD-M TK48 D18	1.000	ST
3	4.100-765.3	Set motor complete HD 8/18-4 M *EU	1.000	ST
4		Cylinder head complete HD-M TK48 D18 Servo	1.000	ST
6	5.811-001.0	Electric box	1.000	ST
7	5.064-089.0	Cover electric box	1.000	ST
10	5.112-031.0	Bush	3.000	ST
16	5.263-003.0	Tensioning part	1.000	ST
20	5.767-005.0	Rubber buffer	4.000	ST
23	6.288-050.0	Engine oil 1L	1.000	ST
26	6.362-161.0	O-Ring seal 19,3 X 2,4	2.000	ST
30	5.070-176.0	Oil container	1.000	ST
31	5.064-457.0	Cover plate qusty grey oil	1.000	ST
32	6.389-610.0	Hose	205.000	M
33	5.443-029.0	Hose stem drain hose oil	1.000	ST
34	5.443-030.0	Blind plug drain hose oil	1.000	ST
35	5.132-187.0	Plug	1.000	ST
40	6.630-824.0	Safety switch E-T-A 1659 (15A)	2.000	ST
41	5.045-071.0	Slider E-T-A	1.000	ST
45	6.961-000.0	Micro switch	1.000	ST
48	7.306-807.0	Cylinder head screw M10x85-8.8-A3E ISO4	4.000	ST
49	7.303-047.0	Screw M6x16 -St-R3R (In6Rd)	4.000	ST
51	6.632-173.0	Contactore 4,0KW/400V	1.000	ST
58	5.045-064.0	Selector shaft electric box 57mm	1.000	ST
60		Cable 1,5x220-SW	3.000	ST
61		Cable 1,5x250-SW	2.000	ST
68	5.363-761.0	Seal label	1.000	ST
71	6.303-125.0	Screw 5x20-Sonder In6Rd+Spitze	5.000	ST
72	7.303-086.0	Screw 5x30 -10.9-R2R (K-In6Rd)	1.000	ST
82	6.650-656.3	Cable with plug for replacement *EU	1.000	ST
900	2.883-074.0	Pump set HD-M	1.000	ST