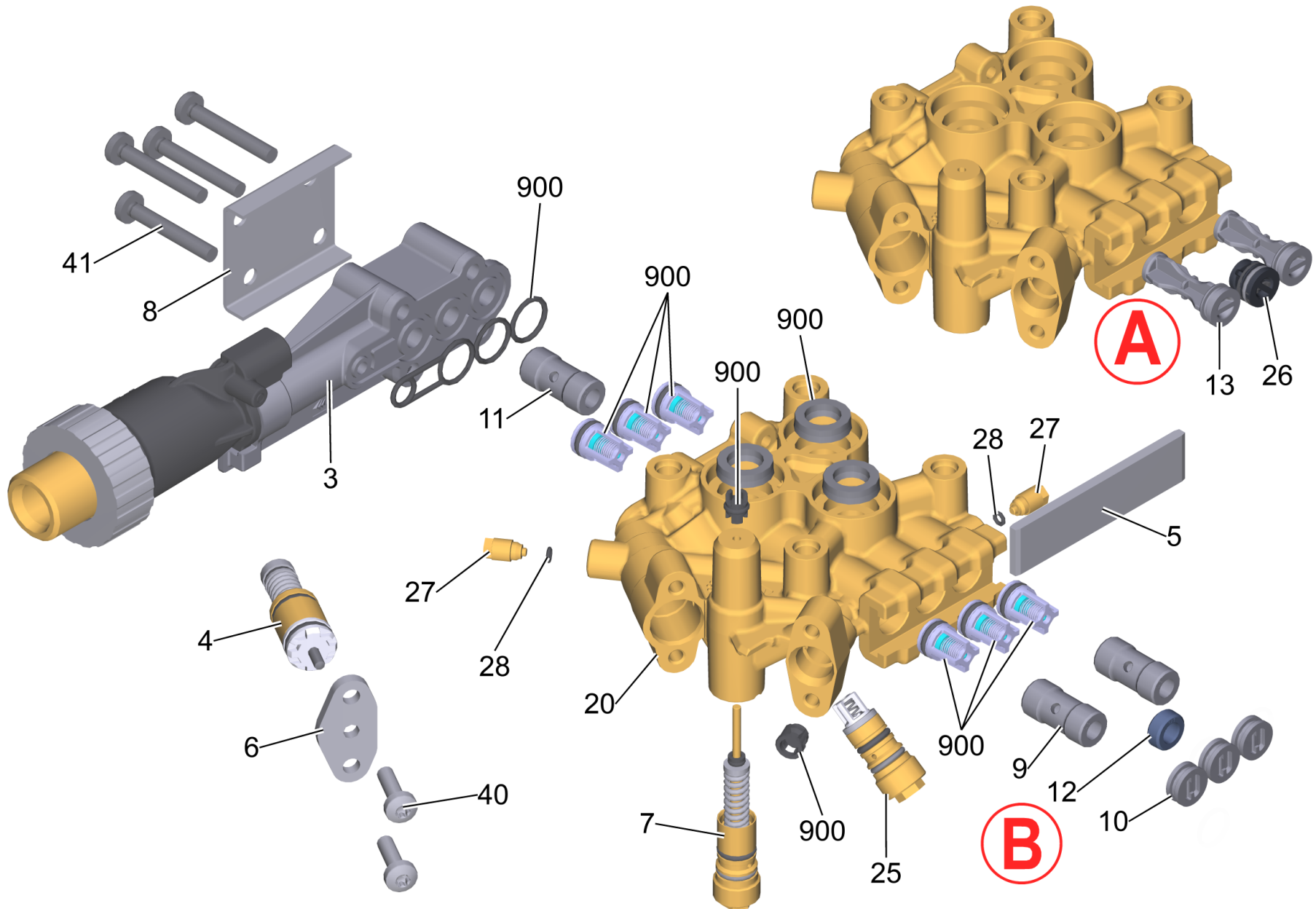


4 Cylinder head complete HD-M TK45 D12

Professional \ High pressure cleaner cold water \ Electric motor \ HD 6/15 MXA Plus *EU \ Unit HD 6/15 MXA*EU \ Pump set HD 6/15 M *EU (D128) \ Cylinder head complete HD-M TK45 D12



4 Cylinder head complete HD-M TK45 D12

Professional \ High pressure cleaner cold water \ Electric motor \ HD 6/15 MXA Plus *EU \ Unit HD 6/15 MXA*EU \ Pump set HD 6/15 M *EU (D128) \ Cylinder head complete HD-M TK45 D12



POS	Article no.	Description	Quantity	Unit	Foot note text
3		Water intake complete	1	PC	
900		Part at pump set	1	PC	
13	4.100-824.0	Spare parts set plug cpl. 36mm	2	PC	VERSION A
26	4.100-825.0	Spare parts set plug cpl. 12mm	1	PC	VERSION A
10	4.132-007.0	Drain plug only for replacement	3	PC	VERSION B
7	4.580-104.3	Control piston complete D14	1	PC	
	Item text1: successor of 4.624-301.3				
25	4.580-139.3	Start-up Valve stainless steel cpl. D6,3	1	PC	
4	4.580-792.3	Excess-current complete for replacement	1	PC	
7	4.624-301.3	Control piston complete for replacement	1	PC	
5	5.003-062.0	Plate	1	PC	
8	5.005-314.0	Plate inlet fitting	1	PC	
6	5.093-067.0	Cover plate	1	PC	
12	5.110-050.0	Spacer D14,5 x 6	1	PC	VERSION B
9	5.110-079.0	Spacer brass D14,5 x 30	2	PC	VERSION B
11	5.110-079.0	Spacer brass D14,5 x 30	1	PC	
27	5.443-024.3	Plug for replacement	2	PC	
20	5.550-396.3	Cylinder head complete for replacement HD-M TK45 D12	1	PC	
28	6.362-984.0	O-Ring d. 3 x 1,5 NBR 80	2	PC	
40	7.304-169.0	Hexagonal head screw M6x16 -10.9-A2K DIN 933	2	PC	
41	7.306-129.0	Screw M6x40 -8.8-P2R (In6Rd)	4	PC	