

## **Spare parts list** (1.937-671.0) NT 700

## Table of contents

---

|   |    |
|---|----|
| NT 700 (1.937-671.0)                                  | 3  |
| Spare parts list NT 700 (5.955-600.0)                 | 4  |
| 10 Top part   | 5  |
| 11 Cover  | 6  |
| 12 Switch   | 9  |
| 20 Vacuum motor                                       | 11 |
| 2 Vacuum motor -230V (6.490-113.0)                    | 13 |
| 30 Tank   | 14 |
| 31 Tank   | 15 |
| 32 Drain hose   | 18 |
| 40 Accessories  | 20 |
| 41 Standard accessories                               | 21 |
| 9 Floor tool packaged basalt grey DN40 (6.907-408.0)  | 23 |
| 12 Floor tool packaged basalt grey DN40 (6.907-408.0) | 24 |
| 42 Special accessories                                | 25 |
| 3 Floor tool packaged basalt grey DN40 (6.907-408.0)  | 27 |

NT 700 (1.937-671.0)

---

| POS | Article no.          | Description             | Quantity | Unit |
|-----|----------------------|-------------------------|----------|------|
| 0   | 5.955-600.0          | Spare parts list NT 700 | 1.000    | ST   |
|     | Item text2: 19376710 |                         |          |      |

---

Spare parts list NT 700 (5.955-600.0)

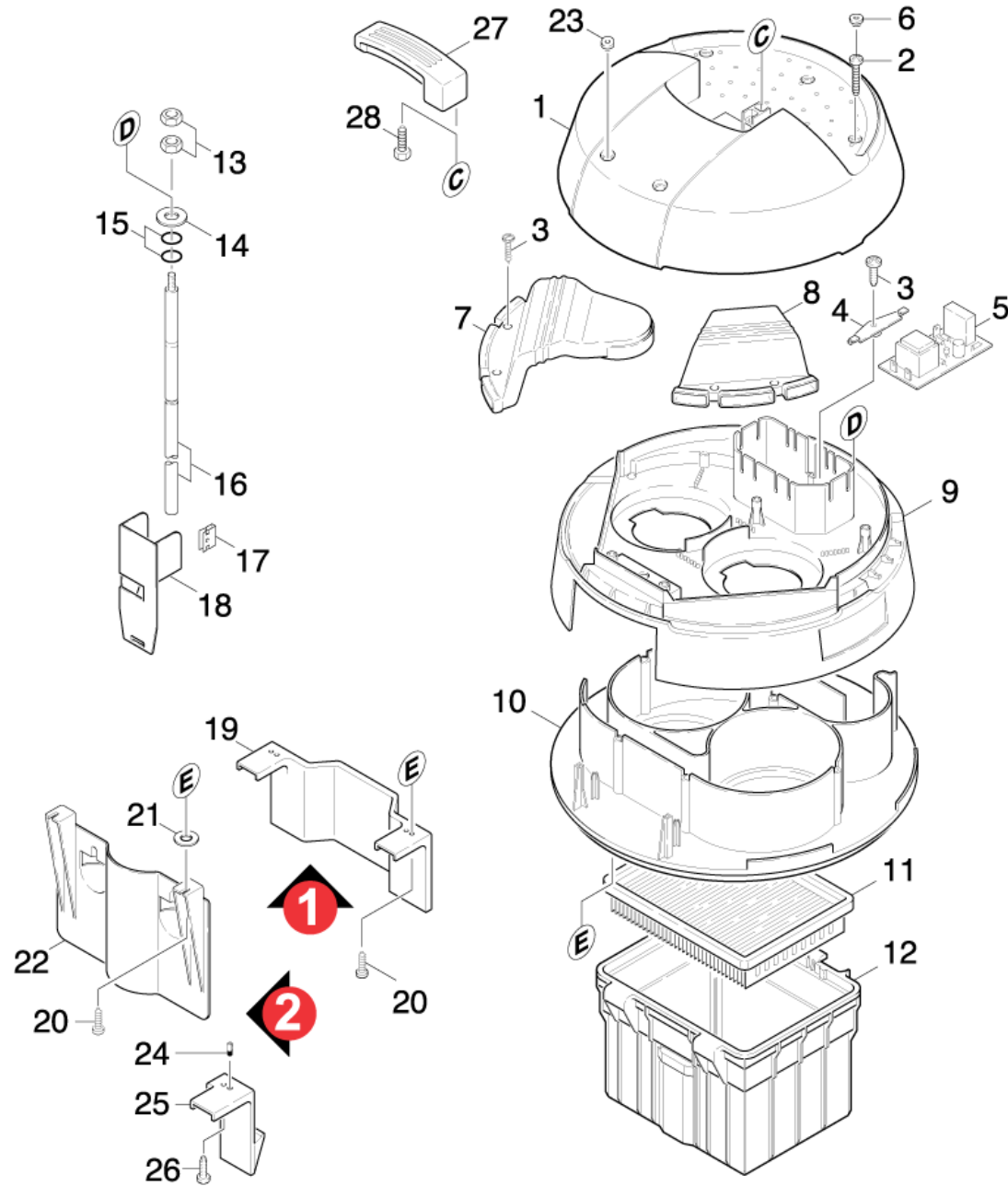
---

| <b>POS</b> | <b>Description</b> | <b>Quantity</b> | <b>Unit</b> |
|------------|--------------------|-----------------|-------------|
| 10         | Top part           | 1.000           | ST          |
| 20         | Vacuum motor       | 1.000           | ST          |
| 30         | Tank               | 1.000           | ST          |
| 40         | Accessories        | 1.000           | ST          |

## 10 Top part

---

| <b>POS</b> | <b>Description</b> | <b>Quantity</b> | <b>Unit</b> |
|------------|--------------------|-----------------|-------------|
| 11         | Cover              | 1.000           | ST          |
| 12         | Switch             | 1.000           | ST          |



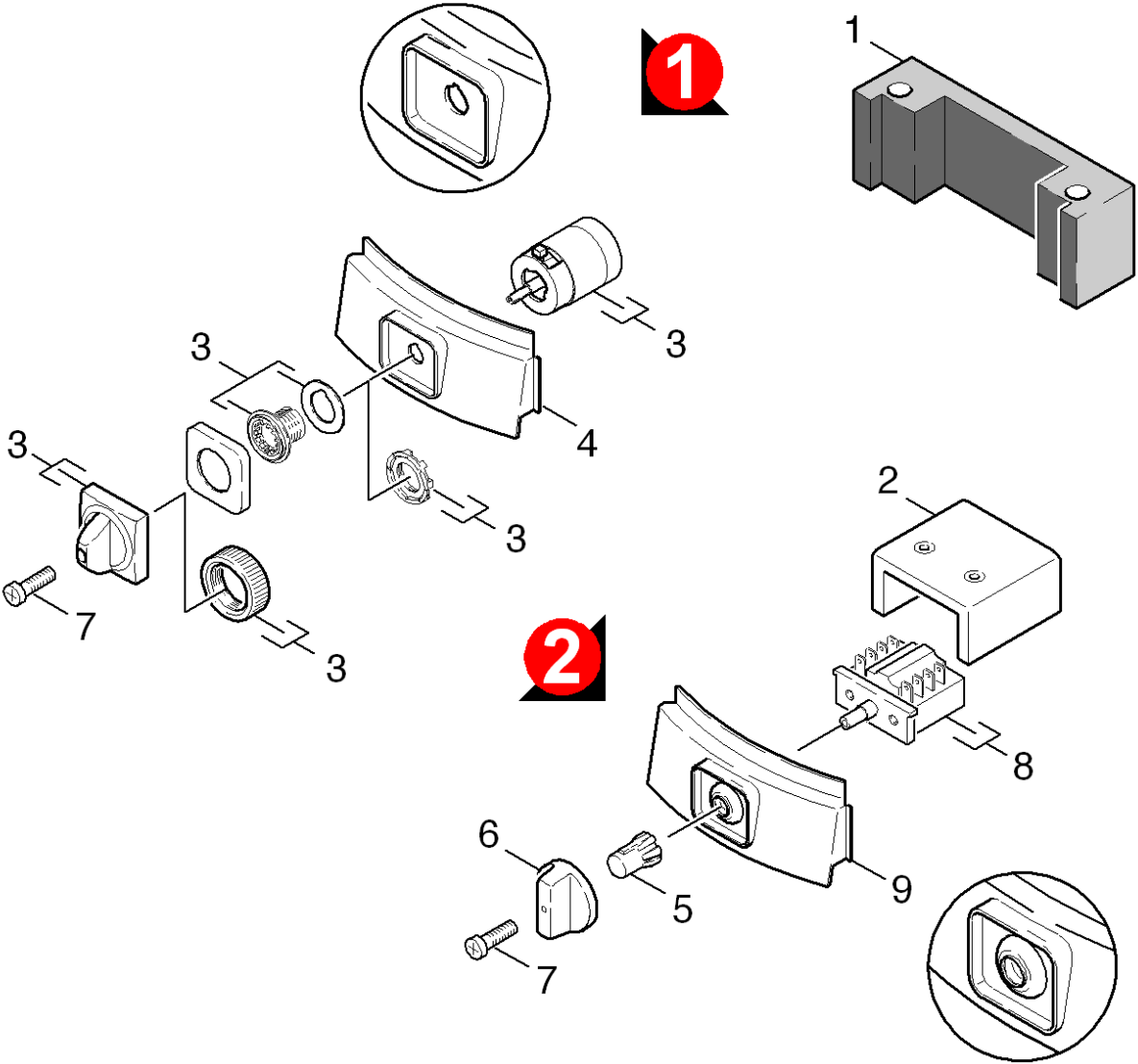
## 11 Cover

| POS | Article no.  | Description                    | Quantity | Unit | Foot note text |
|-----|--|--------------------------------|----------|------|----------------|
| 1   | 7.777-999.0  | Stockpiling discontinued       | 1.000    | ST   |                |
|     | <b>Item text1:</b> / 1.937-904.0   |                                |          |      |                |
| 1   | 7.777-999.0  | Stockpiling discontinued       | 1.000    | ST   |                |
|     | <b>Item text1:</b> / 1.937-671.0   |                                |          |      |                |
| 1   | 7.777-999.0  | Stockpiling discontinued       | 1.000    | ST   |                |
|     | <b>Item text1:</b> / 1.937-121.0 / -131.0 / -141.0 / -281.0 / -291.0 / -521.0 / -601.0 / -611.0 / -701.0 |                                |          |      |                |
| 2   | 6.903-395.0  | Screw 5,0x28                   | 13.000   | ST   |                |
| 3   | 7.777-999.0  | Stockpiling discontinued       | 7.000    | ST   |                |
| 4   | 7.777-999.0  | Stockpiling discontinued       | 2.000    | ST   |                |
| 5   | 6.682-300.0  | Electronics                    | 1.000    | ST   |                |
|     | <b>Item text1:</b> / 1.937-671.0 / -904.0  |                                |          |      |                |
| 5   | 6.682-281.0  | Electronics                    | 1.000    | ST   |                |
|     | <b>Item text1:</b> / 1.937-121.0 / -131.0 / -141.0 / -281.0 / -291.0 / -521.0 / -601.0 / -611.0 / -701.0 |                                |          |      |                |
| 6   | 5.031-003.0  | Cap                            | 4.000    | ST   |                |
| 7   | 7.777-999.0  | Stockpiling discontinued       | 1.000    | ST   |                |
| 8   | 7.777-999.0  | Stockpiling discontinued       | 1.000    | ST   |                |
| 9   | 7.777-999.0  | Stockpiling discontinued       | 1.000    | ST   |                |
|     | <b>Item text1:</b> / 1.937-671.0 / -904.0  |                                |          |      |                |
| 9   | 7.777-999.0  | Stockpiling discontinued       | 1.000    | ST   |                |
|     | <b>Item text1:</b> / 1.937-121.0 / -131.0 / -141.0 / -281.0 / -291.0 / -521.0 / -601.0 / -611.0 / -701.0 |                                |          |      |                |
| 10  | 7.777-999.0  | Stockpiling discontinued       | 1.000    | ST   | VERSION 2      |
|     | <b>Item text1:</b> / 5.003-102.0 / 5.037-079.0   |                                |          |      |                |
| 10  | 7.777-999.0  | Stockpiling discontinued       | 1.000    | ST   | VERSION 1      |
|     | <b>Item text1:</b> / 5.003-056.0   |                                |          |      |                |
| 11  | 5.731-020.0  | Filter cartridge               | 1.000    | ST   |                |
| 12  | 5.050-030.0  | Frame                          | 1.000    | ST   |                |
| 13  | 7.311-424.0  | Hexagon nut M4 -8-A2E ISO 7040 | 2.000    | ST   |                |
| 14  | 7.312-001.0  | Washer 4 -200HV-A3E ISO 7089   | 2.000    | ST   |                |
| 15  | 6.362-401.0  | O-Ring seal 3,1 X 1,6          | 2.000    | ST   |                |
| 16  | 5.107-144.0  | Probe                          | 2.000    | ST   |                |
| 17  | 6.373-593.0  | U-Fastening                    | 2.000    | ST   |                |
| 18  | 5.031-116.0  | Extension                      | 2.000    | ST   |                |
| 19  | 7.777-999.0  | Stockpiling discontinued       | 1.000    | ST   | VERSION 1      |

## 11 Cover

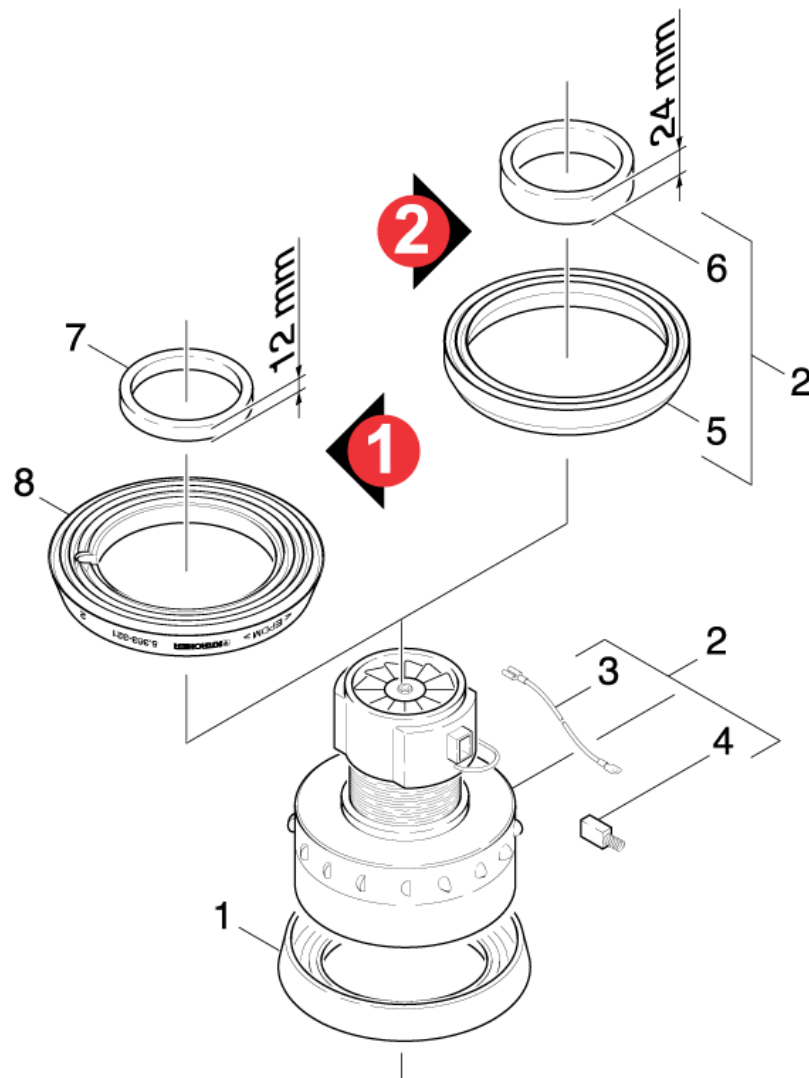
| POS | Article no.                      | Description                          | Quantity | Unit | Foot note text |
|-----|----------------------------------|--------------------------------------|----------|------|----------------|
|     | <b>Item text1: / 5.030-995.0</b> |                                      |          |      |                |
| 20  | 7.303-026.0                      | Screw 4x16 -A2-70 (In6Rd)            | 2.000    | ST   |                |
| 21  | 7.312-045.0                      | Washer 6-200HV-P4E ISO 7089          | 2.000    | ST   |                |
| 22  | 5.003-102.0                      | Baffle plate                         | 1.000    | ST   | VERSION 2      |
|     | <b>Item text1: / 5.031-134.0</b> |                                      |          |      |                |
| 23  | 5.031-004.0                      | Cap                                  | 2.000    | ST   |                |
| 24  | 5.314-094.0                      | Pin                                  | 2.000    | ST   |                |
| 25  | 5.037-079.0                      | Hook                                 | 2.000    | ST   | VERSION 2      |
|     | <b>Item text1: / 5.031-134.0</b> |                                      |          |      |                |
| 26  | 7.777-999.0                      | Stockpiling discontinued             | 2.000    | ST   |                |
| 27  | 5.030-998.0                      | Hand grip                            | 1.000    | ST   |                |
| 28  | 7.306-194.0                      | Screw M6x20 -A2-70 (In6Rd) ISO 14583 | 2.000    | ST   |                |





## 12 Switch

| POS | Article no.   | Description                    | Quantity | Unit | Foot note text |
|-----|---|--------------------------------|----------|------|----------------|
| 1   | 7.777-999.0   | Stockpiling discontinued       | 1.000    | ST   |                |
| 2   | 7.777-999.0   | Stockpiling discontinued       | 1.000    | ST   | VERSION 2      |
|     | <b>Item text1:</b> / 1.937-121.0 / -141.0 / -291.0  |                                |          |      |                |
|     | <b>Item text2:</b> / -601.0 / -611.0 / -701.0   |                                |          |      |                |
| 3   | 6.631-610.0   | Switch                         | 1.000    | ST   | VERSION 1      |
|     | <b>Item text1:</b> / 1.937-121.0 bis up to jusq. 15414 / -131.0 bis up to jusq. 14023 / -141.0 bis up to jusq. 15414 / -281.0 bis up to jusq. 10301 / -291.0 bis up to jusq. 10201 / -521.0 bis up to jusq. 15414 / -601.0 bis up to jusq. 10101 / -671.0 bis up to jusq. 10000 |                                |          |      |                |
| 4   | 7.777-999.0   | Stockpiling discontinued       | 1.000    | ST   | VERSION 1      |
|     | <b>Item text1:</b> / 1.937-121.0 bis up to jusq. 15414 / -131.0 bis up to jusq. 14023 / -141.0 bis up to jusq. 15414 / -281.0 bis up to jusq. 10301 / -291.0 bis up to jusq. 10201 / -521.0 bis up to jusq. 15414 / -601.0 bis up to jusq. 10101 / -671.0 bis up to jusq. 10000 |                                |          |      |                |
| 5   | 6.631-768.0   | Clamp handhold                 | 1.000    | ST   | VERSION 2      |
| 6   | 5.321-435.0   | Handhold                       | 1.000    | ST   | VERSION 2      |
| 7   | 7.306-050.0   | Screw M2,5x10 -8.8-R2R (In6Rd) | 1.000    | ST   |                |
| 8   | 6.631-804.0   | Rotary switch                  | 1.000    | ST   | VERSION 1      |
| 9   | 5.031-089.0   | Screen front                   | 1.000    | ST   | VERSION 2      |



## 20 Vacuum motor

| POS | Article no.   | Description                           | Quantity | Unit | Foot note text |
|-----|---|---------------------------------------|----------|------|----------------|
| 1   | 5.363-331.0   | Seal bottom                           | 2.000    | ST   |                |
| 2   | 6.490-118.0   | Vacuum motor -250V                    | 2.000    | ST   | VERSION 2      |
|     | <b>Item text1:</b> / 1.937-601.0  |                                       |          |      |                |
| 2   | 6.490-113.0   | Vacuum motor -230V                    | 2.000    | ST   | VERSION 2      |
|     | <b>Item text1:</b> / 1.937-121.0 / -131.0 / -141.0 / -281.0 / -291.0 / -521.0 / -611.0 / -701.0 |                                       |          |      |                |
| 2   | 2.639-033.0   | Conversion kit vacuum motor           | 2.000    | ST   | VERSION 1      |
|     | <b>Item text1:</b> / 1.937-601.0  |                                       |          |      |                |
| 2   | 2.638-882.0   | Conversion kit vacuum motor           | 2.000    | ST   | VERSION 1      |
|     | <b>Item text1:</b> / 1.937-121.0 / -131.0 / -141.0  |                                       |          |      |                |
|     | <b>Item text2:</b> / -281.0 / -291.0 / -521.0   |                                       |          |      |                |
| 2   | 2.639-170.0   | Conversion kit vacuum motor 120 V     | 1.000    | ST   | VERSION 1      |
|     | <b>Item text1:</b> / 1.937-671.0 / -904.0   |                                       |          |      |                |
| 3   | 6.647-924.0   | Cable set D                           | 4.000    | ST   |                |
| 4   | 6.610-204.0   | Carbon brush set only for replacement | 2.000    | ST   | VERSION 2      |
|     | <b>Item text1:</b> / 6.490-113.0 / -118.0   |                                       |          |      |                |
| 4   | 2.883-003.0   | Carbon brush set                      | 2.000    | ST   | VERSION 1      |
|     | <b>Item text1:</b> / 6.490-087.0 / -100.0   |                                       |          |      |                |
| 5   | 5.363-408.0   | Seal                                  | 2.000    | ST   | VERSION 2      |
| 6   | 5.363-409.0   | Joint ring                            | 2.000    | ST   | VERSION 2      |
| 7   | 6.903-363.0   | Profile gasket                        | 2.000    | ST   | VERSION 1      |
| 8   | 5.363-321.0   | Joint ring                            | 2.000    | ST   | VERSION 1      |

2 Vacuum motor -230V (6.490-113.0)

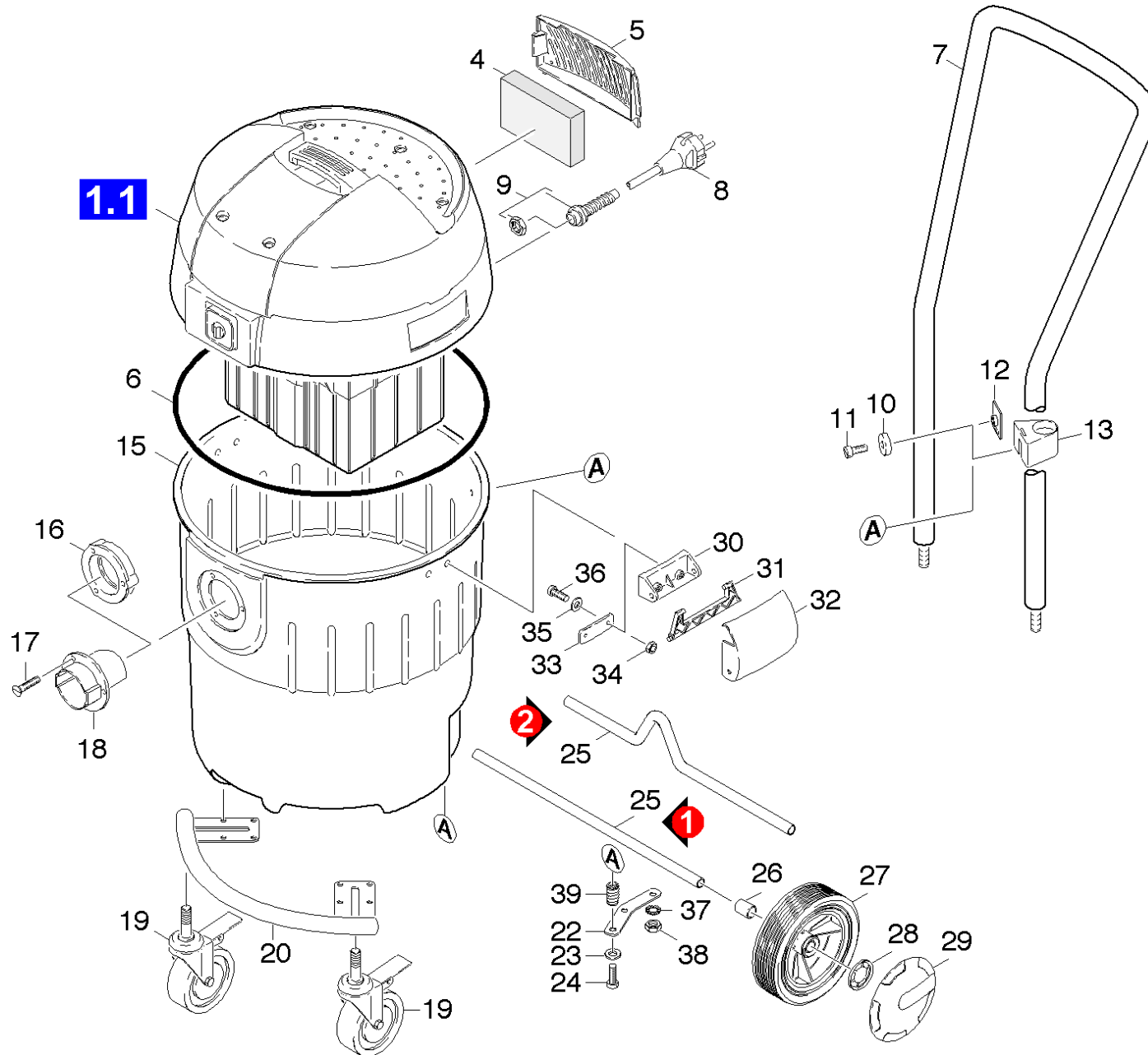
---

| POS | Article no. | Description                           | Quantity | Unit |
|-----|-------------|---------------------------------------|----------|------|
| 10  | 6.610-204.0 | Carbon brush set only for replacement | 1.000    | ST   |

30 Tank

---

| POS | Description | Quantity | Unit |
|-----|-------------|----------|------|
| 31  | Tank        | 1.000    | ST   |
| 32  | Drain hose  | 1.000    | ST   |



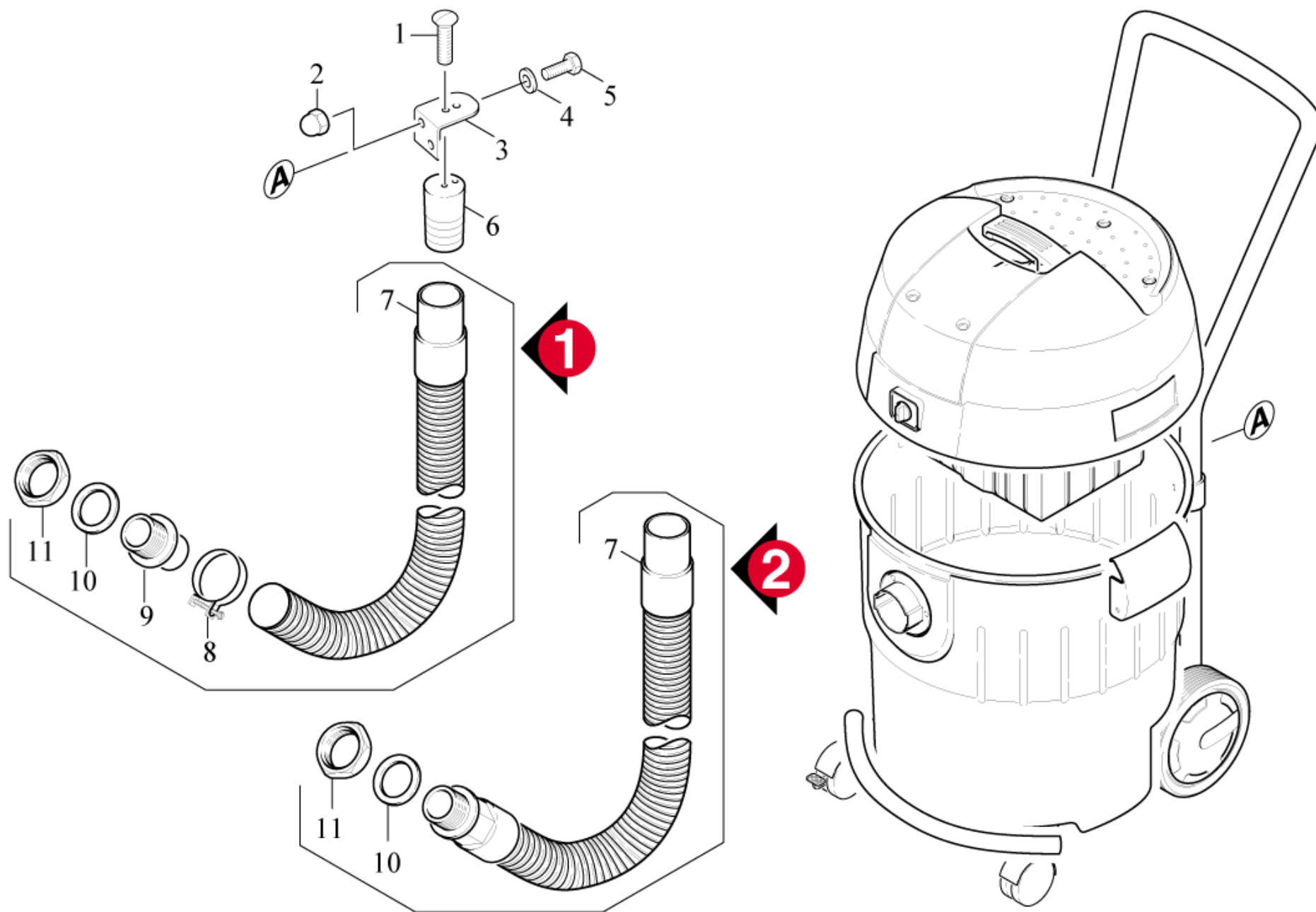
## 31 Tank

| POS | Article no.  | Description                              | Quantity | Unit | Remark    | Foot note text                                       |
|-----|--|--|----------|------|-----------|--|
| 4   | 6.414-446.0  | Filter                                   | 1.000    | ST   |           |  |
| 5   | 5.031-001.0  | Screen rear                              | 1.000    | ST   |           |  |
| 6   | 6.362-857.0  | Cord cellular rubber D10                 | 1.000    | ST   |           |  |
| 7   | 5.034-473.0  | Shearing shackle                         | 1.000    | ST   |           |  |
| 8   | 7.777-999.0  | Stockpiling discontinued                 | 1.000    | ST   |           |  |
|     | <b>Item text1:</b> / 1.937-291.0                   |  |          |      |           |  |
| 8   | 7.777-999.0  | Stockpiling discontinued                 | 1.000    | ST   |           |  |
|     | <b>Item text1:</b> / 1.937-701.0                   |  |          |      |           |  |
| 8   | 6.647-496.0  | Cable with plug                          | 1.000    | ST   |           |  |
|     | <b>Item text1:</b> / 1.937-671.0 / -904.0          |  |          |      |           |  |
| 8   | 6.647-069.0  | Power cable 10m                          | 1.000    | ST   |           |  |
|     | <b>Item text1:</b> / 1.937-121.0 / -131.0 / -141.0 |  |          |      |           |  |
|     | <b>Item text2:</b> / -521.0 / -611.0               |  |          |      |           |  |
| 8   | 6.647-109.0  | Cable with plug *AU                      | 1.000    | ST   |           |  |
|     | <b>Item text1:</b> / 1.937-601.0                   |  |          |      |           |  |
| 8   | 6.641-676.0  | Cable with plug 7,5m * GB                | 1.000    | ST   |           |  |
|     | <b>Item text1:</b> / 1.937-281.0                   |  |          |      |           |  |
| 9   | 9.760-372.0  | strain relief                            | 1.000    | ST   |           |  |
| 9   | 6.903-987.0  | Cable bushing Z12,5E                     | 1.000    | ST   |           |  |
|     | <b>Item text1:</b> / 1.937-671.0 / -904.0          |  |          |      |           |  |
| 10  | 5.030-993.0  | Washer                                   | 2.000    | ST   |           |  |
| 11  | 7.306-194.0  | Screw M6x20 -A2-70 (In6Rd) ISO 14583     | 2.000    | ST   |           |  |
| 12  | 5.046-616.0  | Speed nut                                | 2.000    | ST   |           |  |
| 13  | 5.042-828.0  | Holder above                             | 2.000    | ST   |           |  |
| 15  | 7.777-999.0  | Stockpiling discontinued                 | 1.000    | ST   | VERSION 2 | WITH OPENING FOR VERSION WITH DRAIN HOSE (SEE GR. 4) |
| 15  | 7.777-999.0  | Stockpiling discontinued                 | 1.000    | ST   |           | WITHOUT OPENING FOR VERSION WITHOUT DRAIN HOSE       |
| 15  | 7.777-999.0  | Stockpiling discontinued                 | 1.000    | ST   | VERSION 1 | WITH OPENING FOR VERSION WITH DRAIN HOSE (SEE GR. 4) |
| 16  | 6.903-297.0  | Flange                                   | 1.000    | ST   |           |  |
| 17  | 7.303-128.0  | Countersunk screw 5x20 -10.9-R2R (In6Rd) | 3.000    | ST   |           |  |



## 31 Tank

| POS | Article no. | Description                                | Quantity | Unit | Remark    | Foot note text |
|-----|-------------|--|----------|------|-----------|----------------|
| 18  | 6.903-296.0 | Connecting nipple                          | 1.000    | ST   |           |                |
| 19  | 6.435-241.0 | Castor with brake 75                       | 2.000    | ST   |           |                |
| 20  | 5.053-056.0 | Boom                                       | 1.000    | ST   |           |                |
| 22  | 7.777-999.0 | Stockpiling discontinued                   | 2.000    | ST   |           |                |
| 23  | 7.312-045.0 | Washer 6-200HV-P4E ISO 7089                | 4.000    | ST   |           |                |
| 24  | 7.306-087.0 | Screw M6x10 -8.8-R3R (In6Rd)               | 4.000    | ST   |           |                |
| 25  | 7.777-999.0 | Stockpiling discontinued                   | 1.000    | ST   | VERSION 2 |                |
| 25  | 5.105-188.0 | Axle                                       | 1.000    | ST   | VERSION 1 |                |
| 26  | 5.110-542.0 | Sleeve                                     | 2.000    | ST   |           |                |
| 27  | 6.435-196.0 | Wheel D 180                                | 2.000    | ST   |           |                |
| 28  | 6.343-168.0 | Lock washer                                | 2.000    | ST   |           |                |
| 29  | 6.435-197.0 | Wheel cap zinc yellow                      | 2.000    | ST   |           |                |
| 30  | 5.042-827.0 | Holder                                     | 2.000    | ST   |           |                |
| 31  | 5.481-144.0 | Lever                                      | 2.000    | ST   |           |                |
| 32  | 5.030-992.0 | Closure                                    | 2.000    | ST   |           |                |
| 33  | 5.030-991.0 | Spacer                                     | 2.000    | ST   |           |                |
| 34  | 7.311-001.0 | Hexagon nut M4 -6-A2E ISO 4032             | 4.000    | ST   |           |                |
| 35  | 7.312-001.0 | Washer 4 -200HV-A3E ISO 7089               | 4.000    | ST   |           |                |
| 36  | 7.306-208.0 | Screw M 4x16-A2-70 (IN6RD)                 | 4.000    | ST   |           |                |
| 37  | 7.312-166.0 | Toothed lock washer A8,4-FSt-A3E<br>DIN 67 | 2.000    | ST   |           |                |
| 38  | 7.311-004.0 | Hexagon nut M8 -8-A3E ISO 4032             | 2.000    | ST   |           |                |
| 39  | 7.777-999.0 | Stockpiling discontinued                   | 2.000    | ST   |           |                |



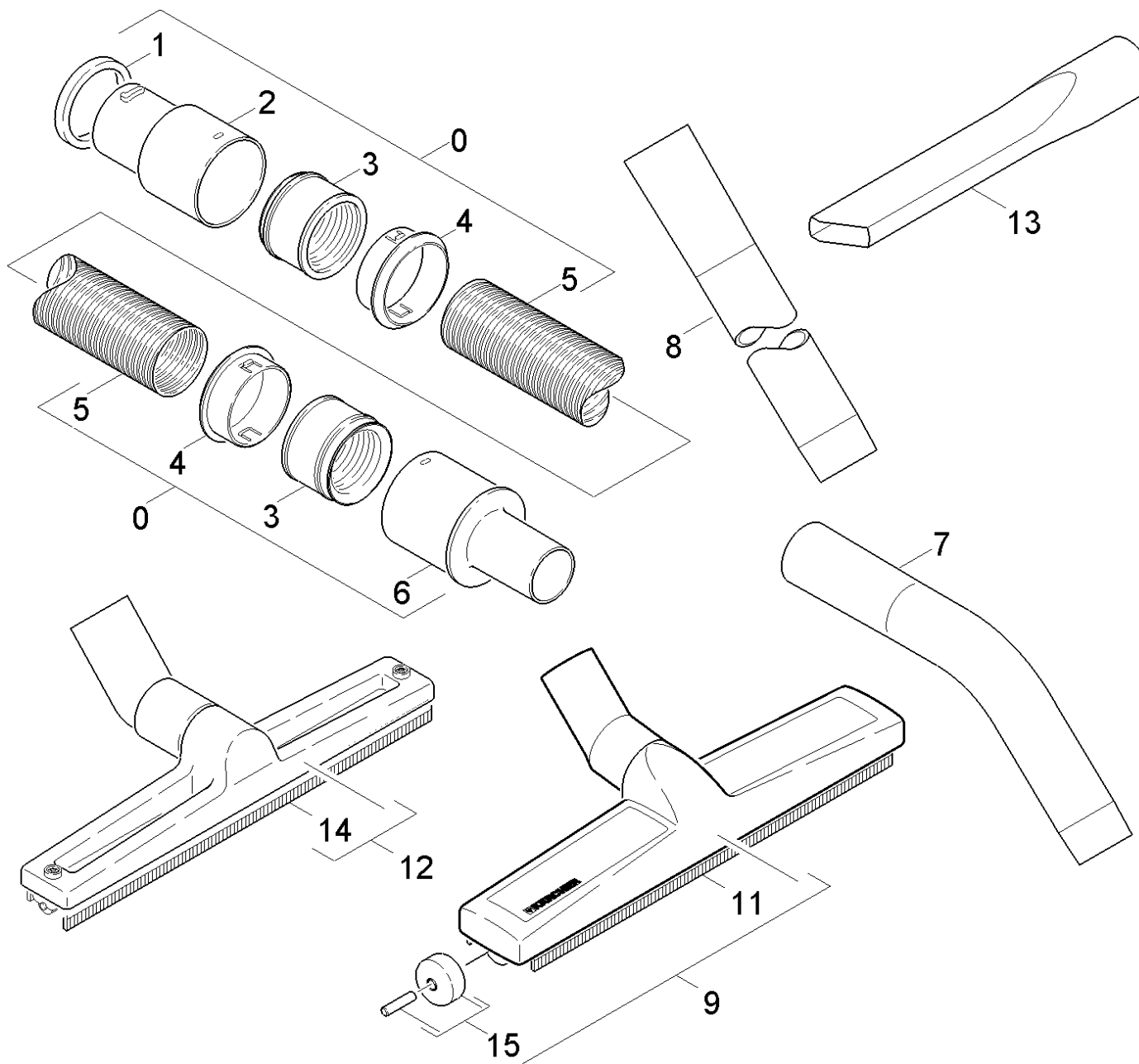
## 32 Drain hose

| POS | Article no.  | Description                              | Quantity | Unit | Foot note text |
|-----|--|--|----------|------|----------------|
| 1   | 7.303-072.0  | Sheet metal screw ST4,2X13-ZNBHL (IN6RD) | 2.000    | ST   |                |
| 2   | 7.311-385.0  | Cap nut M 5-A1-50 DIN 1587               | 2.000    | ST   |                |
| 3   | 5.021-956.0  | Angle                                    | 1.000    | ST   |                |
| 4   | 7.312-282.0  | Washer 5 -A2 ISO 7093-1                  | 2.000    | ST   |                |
| 5   | 7.306-071.0  | Screw M5x10 -8.8-R2R (In6Rd)             | 2.000    | ST   |                |
| 6   | 5.030-350.0  | Moulded part                             | 1.000    | ST   |                |
| 7   | 6.390-867.0  | Drain hose DN32 L=575mm                  | 1.000    | ST   | VERSION 2      |
|     | <b>Item text1:</b> / 1.937-141.0 / -671.0 / -701.0 |  |          |      |                |
| 7   | 6.388-718.0  | Drain hose DN32                          | 1.000    | ST   | VERSION 1      |
|     | <b>Item text1:</b> / 1.937-131.0 / -521.0 / -904.0 |  |          |      |                |
| 8   | 6.388-717.0  | Hose clip 33- 37                         | 1.000    | ST   | VERSION 1      |
| 9   | 5.443-221.0  | Hose stem                                | 1.000    | ST   | VERSION 1      |
| 10  | 7.777-999.0  | Stockpiling discontinued                 | 1.000    | ST   | VERSION 1+2    |
| 11  | 6.310-025.0  | Hexagon nut G 1"                         | 1.000    | ST   | VERSION 1      |
| 11  | 5.031-940.0  | Hexagon nut                              | 1.000    | ST   | VERSION 2      |

## 40 Accessories

---

| <b>POS</b> | <b>Description</b>   | <b>Quantity</b> | <b>Unit</b> |
|------------|----------------------|-----------------|-------------|
| 41         | Standard accessories | 1.000           | ST          |
| 42         | Special accessories  | 1.000           | ST          |



## 41 Standard accessories

| POS | Article no.                      | Description                          | Quantity | Unit |
|-----|----------------------------------|--------------------------------------|----------|------|
| 0   | 4.440-263.0                      | Suction hose DN40                    | 1.000    | ST   |
| 1   | 5.114-105.0                      | Ring                                 | 1.000    | ST   |
| 2   | 5.470-008.0                      | Coupler                              | 1.000    | ST   |
| 3   | 5.363-155.0                      | Joint ring DN40                      | 2.000    | ST   |
| 4   | 5.262-013.0                      | Clamping ring DN40                   | 2.000    | ST   |
| 5   | 6.388-723.0                      | Suction hose DN38                    | 1.000    | ST   |
| 6   | 5.453-010.0                      | Connecting sleeve 40                 | 1.000    | ST   |
| 7   | 6.900-276.0                      | Elbow DN40 STAHL                     | 1.000    | ST   |
| 8   | 6.900-275.0                      | Suction tube DN40-0,55m              | 1.000    | ST   |
| 9   | 6.907-408.0                      | Floor tool packaged basalt grey DN40 | 1.000    | ST   |
| 11  | 6.905-877.0                      | Rubber lip set only for replacement  | 1.000    | ST   |
| 12  | 6.907-408.0                      | Floor tool packaged basalt grey DN40 | 1.000    | ST   |
|     | <b>Item text1:</b> / 1.937-141.0 |                                      |          |      |
| 13  | 6.903-033.0                      | Crevice nozzle DN40                  | 1.000    | ST   |
|     | <b>Item text1:</b> / 1.937-141.0 |                                      |          |      |
| 14  | 6.903-337.0                      | Rubber lip set for floor nozzle      | 1.000    | ST   |
| 15  | 4.515-342.0                      | Roller complete with axle            | 2.000    | ST   |

9 Floor tool packaged basalt grey DN40 (6.907-408.0)

---

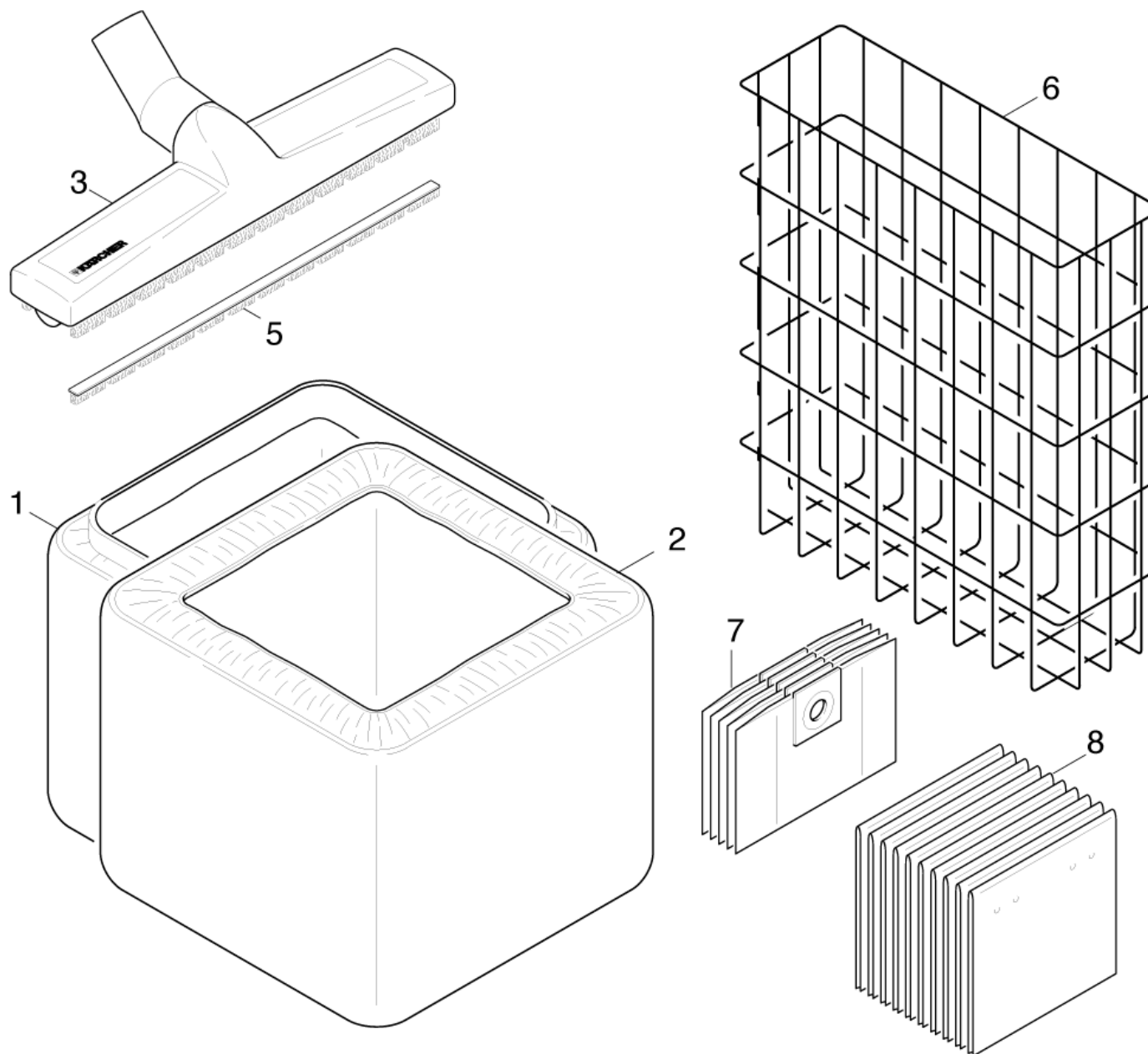
| <b>POS</b> | <b>Article no.</b> | <b>Description</b>                    | <b>Quantity</b> | <b>Unit</b> |
|------------|--------------------|---------------------------------------|-----------------|-------------|
| 10         | 4.515-342.0        | Roller complete with axle             | 1.000           | ST          |
| 20         | 6.905-877.0        | Rubber lip set only for replacement   | 1.000           | ST          |
| 30         | 6.905-878.0        | Brush strips set only for replacement | 1.000           | ST          |

12 Floor tool packaged basalt grey DN40 (6.907-408.0)

---

| <b>POS</b> | <b>Article no.</b> | <b>Description</b>                    | <b>Quantity</b> | <b>Unit</b> |
|------------|--------------------|---------------------------------------|-----------------|-------------|
| 10         | 4.515-342.0        | Roller complete with axle             | 1.000           | ST          |
| 20         | 6.905-877.0        | Rubber lip set only for replacement   | 1.000           | ST          |
| 30         | 6.905-878.0        | Brush strips set only for replacement | 1.000           | ST          |





## 42 Special accessories

---

| <b>POS</b> | <b>Article no.</b> | <b>Description</b>                    | <b>Quantity</b> | <b>Unit</b> | <b>Foot note text</b> |
|------------|--------------------|---------------------------------------|-----------------|-------------|-----------------------|
| 1          | 6.904-014.0        | Dust filter                           | 1.000           | ST          |                       |
| 2          | 6.904-282.0        | Membrane filter                       | 1.000           | ST          |                       |
| 3          | 6.907-408.0        | Floor tool packaged basalt grey DN40  | 1.000           | ST          |                       |
| 5          | 6.905-878.0        | Brush strips set only for replacement | 1.000           | ST          |                       |
| 7          | 6.904-123.0        | Filter bag                            | 1.000           | ZSA         | 5 PIECE               |
| 8          | 6.900-698.0        | Waste bag 10STK                       | 1.000           | ZSA         | SET WITH 10 PIECES    |

### 3 Floor tool packaged basalt grey DN40 (6.907-408.0)

---

| <b>POS</b> | <b>Article no.</b> | <b>Description</b>                    | <b>Quantity</b> | <b>Unit</b> |
|------------|--------------------|---------------------------------------|-----------------|-------------|
| 10         | 4.515-342.0        | Roller complete with axle             | 1.000           | ST          |
| 20         | 6.905-877.0        | Rubber lip set only for replacement   | 1.000           | ST          |
| 30         | 6.905-878.0        | Brush strips set only for replacement | 1.000           | ST          |