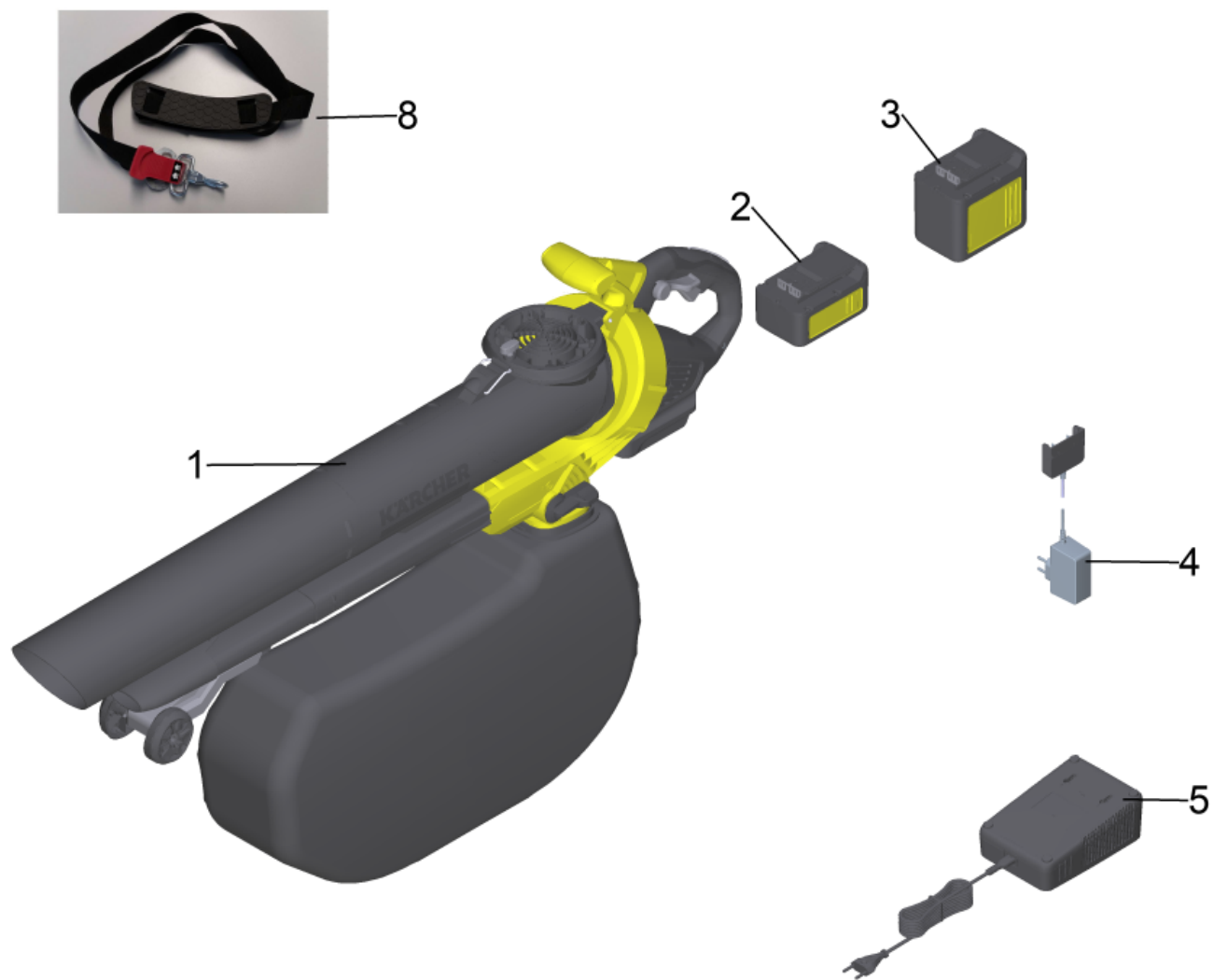


Spare parts list

(1.444-170.0) BLV 36-240 Battery *INT

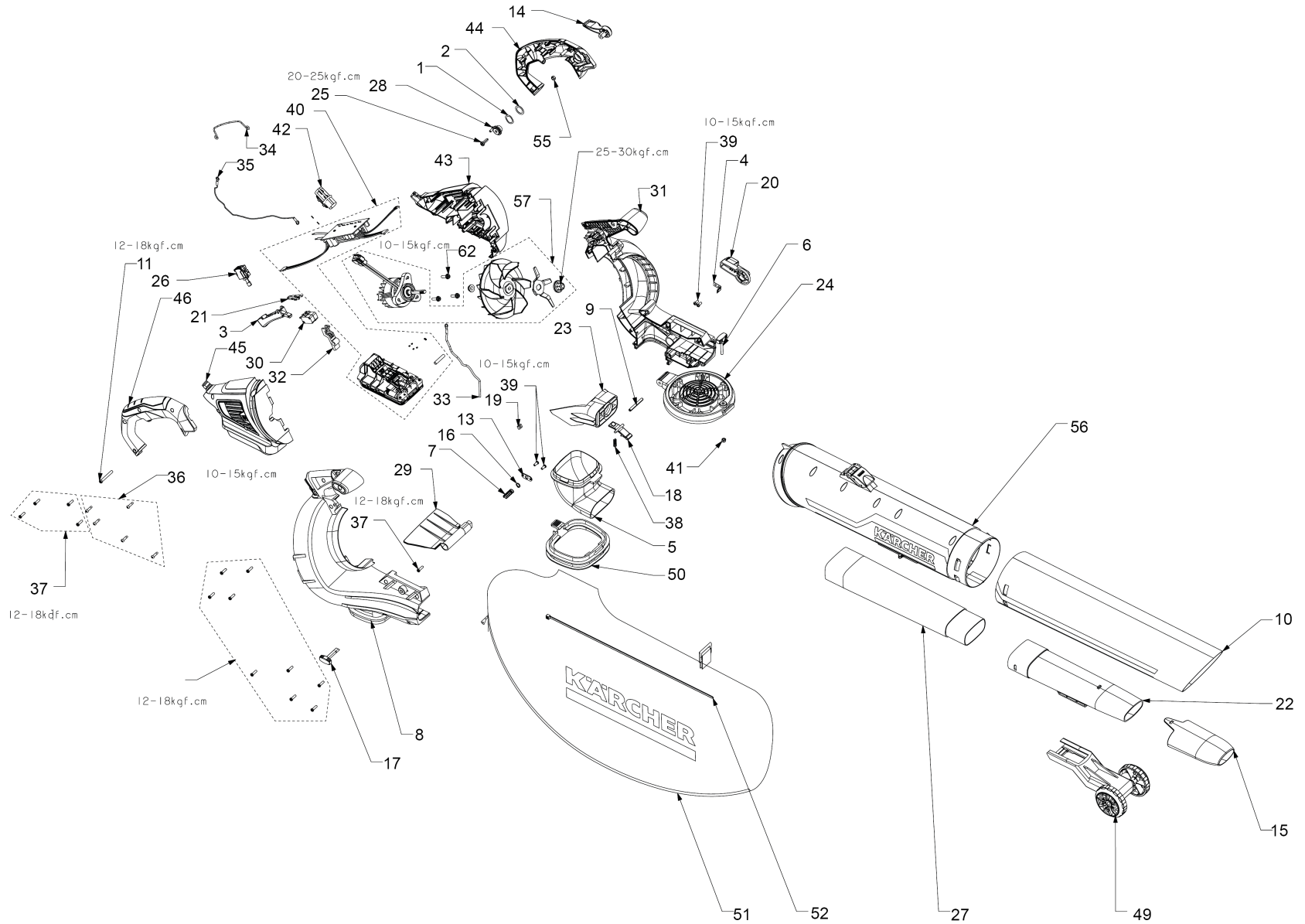
Table of contents

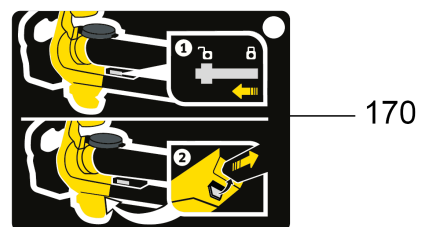
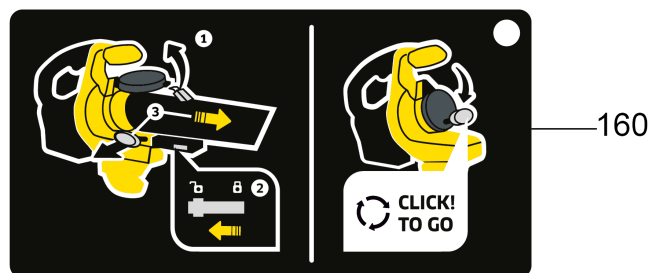
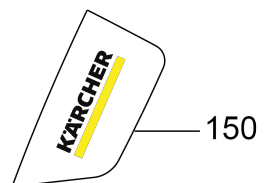
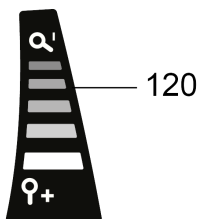
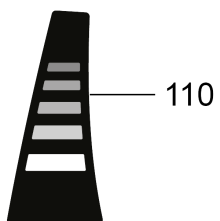
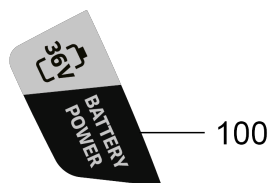
BLV 36-240 Battery *INT (1.444-170.0)	3
1 BLV 36-240*INT	5



BLV 36-240 Battery *INT (1.444-170.0)

POS	Article no.	Description	Quantity	Unit	Remark
1		BLV 36-240*INT	1.000	ST	
2	2.445-030.0	Battery Power 36/25 DW *INT	1.000	ST	36V/2,5Ah
3	2.445-031.0	Battery Power 36/50 DW *INT	1.000	ST	36V/5,0Ah
4	6.445-057.3	Plug-in charger Battery Power 36/5 *AU	1.000	ST	*AU
4	6.445-055.3	Plug-in charger Battery Power 36/5 *JP	1.000	ST	*JP
4	6.445-051.3	Plug-in charger Battery Power 36/5 *EU	1.000	ST	*EU
4	6.445-053.3	Plug-in charger Battery Power 36/5 *GB	1.000	ST	*GB
5	2.445-039.0	Fast battery recharger Battery Power 36 V *JP	1.000	ST	36V/2,5A *JP
5	2.445-041.0	Fast battery recharger Battery Power 36 V *AU	1.000	ST	36V/2,5A *AU
5	2.445-037.0	Fast battery recharger Battery Power 36 V *GB	1.000	ST	36V/2,5A *GB
5	2.445-033.0	Fast battery recharger Battery Power 36 V *EU	1.000	ST	36V/2,5A *EU
6	2.445-051.0	Fast battery recharger Battery Power+ 36/60 *AU	1.000	ST	36V/6,0A *AU
6	2.445-049.0	Fast battery recharger Battery Power+ 36/60 *JP	1.000	ST	36V/6,0A *JP
6	2.445-053.0	Fast battery recharger Battery Power+ 36/60	1.000	ST	36V/6,0A *US
6	2.445-047.0	Fast battery recharger Battery Power+ 36/60 *GB	1.000	ST	36V/6,0A *GB
6	2.445-045.0	Fast battery recharger Battery Power+ 36/60 *EU	1.000	ST	36V/6,0A *EU
7	2.445-057.0	Universal charger Battery Power+ 18-36/60 *AU	1.000	ST	18-36V/2,5-6A *AU
7	2.445-058.0	Universal charger Battery Power+ 18-36/60	1.000	ST	18-36V/2,5-6A *US
7	2.445-055.0	Universal charger Battery Power+ 18-36/60 *GB	1.000	ST	18-36V/2,5-6A *GB
7	2.445-056.0	Universal charger Battery Power+ 18-36/60 *JP	1.000	ST	18-36V/2,5-6A *JP
7	2.445-054.0	Universal charger Battery Power+ 18-36/60 *EU	1.000	ST	18-36V/2,5-6A *EU
8	2.445-242.0	Shoulder belt	1.000	ST	





1 BLV 36-240*INT

POS	Article no.	Description	Quantity	Unit
1	6.444-798.0	Spring washer	1.000	ST
2	6.444-799.0	Washer	1.000	ST
3	6.444-845.0	Pusher	1.000	ST
4	6.444-801.0	Spring plate	1.000	ST
5	6.444-846.0	Tube outlet blade	1.000	ST
6	6.444-271.0	Release button pipe	1.000	ST
7	6.444-810.0	Pressure spring	1.000	ST
8	6.444-847.0	Housing right	1.000	ST
9	6.444-848.0	Spring	1.000	ST
10	6.444-336.0	Suction tube bottom BLV 36V	1.000	ST
11	6.444-849.0	Screw	1.000	ST
13	6.444-808.0	Plate	1.000	ST
14	6.444-850.0	Lever	1.000	ST
15	6.444-851.0	Blow nozzle tube	1.000	ST
16	6.444-809.0	Locking ring 7,4mm	1.000	ST
17	6.444-852.0	Fuse plug	1.000	ST
18	6.444-853.0	Button release	1.000	ST
19	6.444-854.0	Square nut	1.000	ST
20	6.444-792.0	Selector switch	1.000	ST
21	6.444-794.0	Cable with connection	1.000	ST
22	6.444-337.0	Blow pipe bottom BLV 36V	1.000	ST
23	6.444-855.0	Connecting element	1.000	ST
24	6.444-856.0	Suction connection	1.000	ST
25	6.444-575.0	Screw	1.000	ST
26	6.444-561.0	Switch	1.000	ST
27	6.444-857.0	Blow pipe rear	1.000	ST
28	6.444-858.0	Trigger transmission	1.000	ST
29	6.444-859.0	Plate change-over switch	1.000	ST
30	6.444-860.0	Micro switch	1.000	ST
31	6.444-861.0	Housing left	1.000	ST
32	6.444-862.0	Lever	1.000	ST
33	6.444-863.0	Cable with connection	1.000	ST
34	6.444-864.0	Spring earthing	1.000	ST

1 BLV 36-240*INT

POS	Article no.	Description	Quantity	Unit
35	6.444-865.0	Cable with connection	1.000	ST
36	6.444-658.0	Screw	5.000	ST
37	6.444-866.0	Screw	14.000	ST
38	6.444-867.0	Spring	1.000	ST
39	6.444-802.0	Screw	4.000	ST
41	6.444-381.0	Hexagon nut M5	1.000	ST
42	6.444-868.0	Ferrite ring	1.000	ST
43	5.444-199.0	Motor housing left BLV 36V	1.000	ST
44	6.444-869.0	Housing shell handhold left	1.000	ST
45	5.444-201.0	Motor housing right BLV 36V	1.000	ST
46	6.444-870.0	Housing shell handhold right	1.000	ST
49	6.444-784.0	Support wheels	1.000	ST
50	6.444-871.0	Holder leaves bag	1.000	ST
51	6.444-270.0	Leaf bag BLV 36-240	1.000	ST
52	6.444-811.0	Cable tie 4,5x450mm	1.000	ST
55	6.444-872.0	Nut	1.000	ST
56	6.444-335.0	Suction tube above BLV 36V	1.000	ST
62	6.444-549.0	Screw M5x0,8 Torx	3.000	ST
100	5.444-192.0	Label Battery Power 36V BLV	1.000	ST
110	5.444-196.0	Label 36V BLV	1.000	ST
120	5.444-195.0	Label power adjustment 36V BLV	1.000	ST
130	5.444-194.0	Label safety information 36V BLV	1.000	ST
140	5.444-193.0	Label Noise 104 dB	1.000	ST
150	5.444-191.0	Label with Kaercher logo 36V BLV	1.000	ST
160	5.444-197.0	Tag instructions assembly 36V BLV	1.000	ST
170	5.444-198.0	Tag instructions 36V BLV	1.000	ST