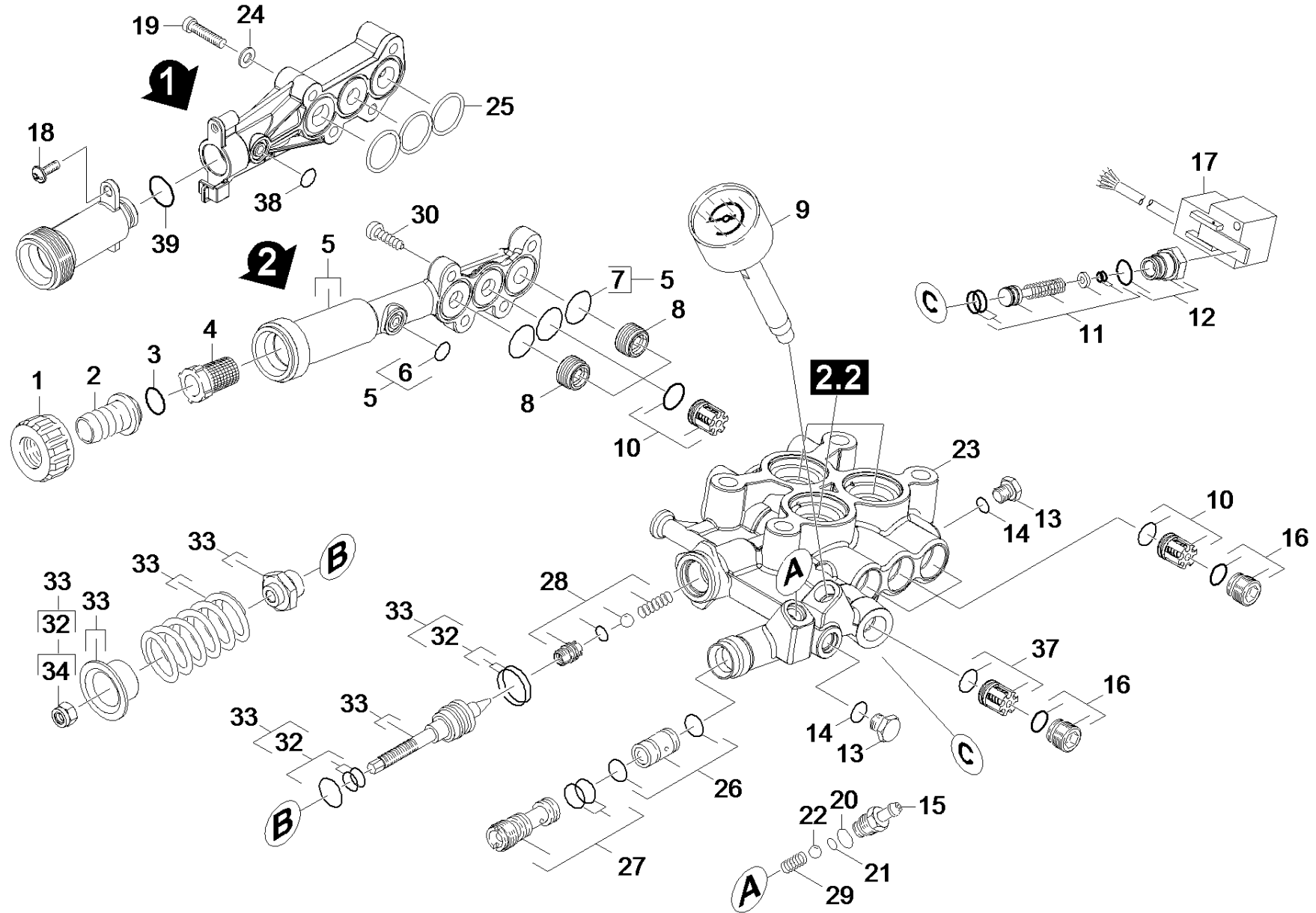


21 Cylinder head

Overview technical documents/Professional/High pressure cleaner cold water/Electric motor/HD 7/18-4m plus (1.524-223.0)/Spare parts list HD 7/18-4M Plus EU-I/20 Pump set/21 Cylinder head



21 Cylinder head

Overview technical documents/Professional/High pressure cleaner cold water/Electric motor/HD 7/18-4m plus (1.524-223.0)/Spare parts list HD 7/18-4M Plus EU-I/20 Pump set/21 Cylinder head

Rez.daļas/nodil.pakļ.daļas	Poz.	Materiāla Nr.	Nosaukums	Daudzums	Pārdoš. vienība	no sēr. Nr..	līdz sēr. Nr.
X-X	1	5.310-076.0	Uzgrieznis	1.000	ST	0000000000	0000000000
X-X	2	5.443-291.0	Caurules nipelis	1.000	ST	0000000000	0000000000
X-X	3	6.362-161.0	Gredzenblīve 19,3 X 2,4	1.000	ST	0000000000	0000000000
X-X	4	6.414-141.0	Sieta filtrs	1.000	ST	0000000000	0000000000
X-X	5	4.064-005.0	Suction cover complete	1.000	ST	0000000000	0000000000
X	6	6.362-388.0	Gredzenblīve 8,0x1,5 -EPDM 70	1.000	ST	0000000000	0000000000
X-X	7	6.363-536.0	Gredzenblīve 21x1,5	3.000	ST	0000000000	0000000000
X-X	8	5.583-177.0	Vārsta skrūve M20x1	3.000	ST	0000000000	0000000000
X-X	9	4.423-024.0	Pressure gauge from 4.422-011.0	1.000	ST	0000000000	0000000000
X-X	10	2.884-512.0	Valve (3 Stueck)	1.000	ST	0000000000	0000000000
X-X	11	2.884-869.0	Spare part set	1.000	ST	0000000000	0000000000
X-X	12	4.411-011.0	Spare part set	1.000	ST	0000000000	0000000000
X	13	5.411-070.0	Vītņtapa	2.000	ST	0000000000	0000000000
X	14	6.362-690.0	Gredzenblīve 7x2 - NBR 70	2.000	ST	0000000000	0000000000
X-X	15	5.443-624.0	Nipelis	1.000	ST	0000000000	0000000000
X-X	16	4.483-001.0	Valve screw	4.000	ST	0000000000	0000000000
X-X	17	6.635-493.0	Divfāzu slēdzis	1.000	ST	0000000000	0000000000
X-X	18	7.303-108.0	Skrūve 5x20 -10.9-R2R (In6Rd)	1.000	ST		
X-X	19	7.306-025.0	Cylinder head screw M 6x35-8.8-A2E ISO4	4.000	ST		
X	20	6.362-690.0	Gredzenblīve 7x2 - NBR 70	1.000	ST	0000000000	0000000000
X-X	21	6.362-175.0	Gredzenblīve 5,28x 1,78	1.000	ST	0000000000	0000000000
	22	7.401-908.0	Sfēra 7 G300 -1.4301 DIN 5401	1.000	ST	0000000000	0000000000
X-X	23	4.550-722.0	Spare part set	1.000	ST	0000000000	0000000000
X-X	24	7.312-026.0	Washer 6-A2 ISO 7090	4.000	ST		
	25	5.365-371.0	Profile gasket	1.000	ST		

21 Cylinder head

Overview technical documents/Professional/High pressure cleaner cold water/Electric motor/HD 7/18-4m plus (1.524-223.0)/Spare parts list HD 7/18-4M Plus EU-I/20 Pump set/21 Cylinder head

Rez.daļas/nodil.pakļ.daļas	Poz.	Materiāla Nr.	Nosaukums	Daudzums	Pārdoš. vienība	no sēr. Nr..	līdz sēr. Nr.
X-X	26	2.884-853.0	Spare part set nozzle insert	1.000	ST	0000000000	0000000000
X-X	27	4.769-052.0	Nozzle insert complete	1.000	ST	0000000000	0000000000
X-X	28	4.481-226.0	Valve seat complete HD7/18	1.000	ST	0000000000	0000000000
	29	5.332-258.0	Spirālveida atspere	1.000	ST	0000000000	0000000000
X-X	30	7.306-023.0	cylinder head screw	4.000	ST	0000000000	0000000000
X-X	32	2.884-551.0	Spare part set	1.000	ST	0000000000	0000000000
X-X	33	2.884-550.0	Spare part set overflow valve	1.000	ST	0000000000	0000000000
X-X	34	7.311-510.0	Hexagon nut M 8-8-A2E ISO 7040	1.000	ST	0000000000	0000000000
X-X	37	4.580-594.0	Valve complete	1.000	ST		
X-X	38	6.363-516.0	O-Ring seal 8,5x2	1.000	ST		
X-X	39	6.362-481.0	Gredzenblīve 14,0 x 2,0 NBR 80	1.000	ST		
X-X	100	2.884-883.0	Spare parts set pump high-pressure 7/18	1.000	ST	0000000000	0000000000