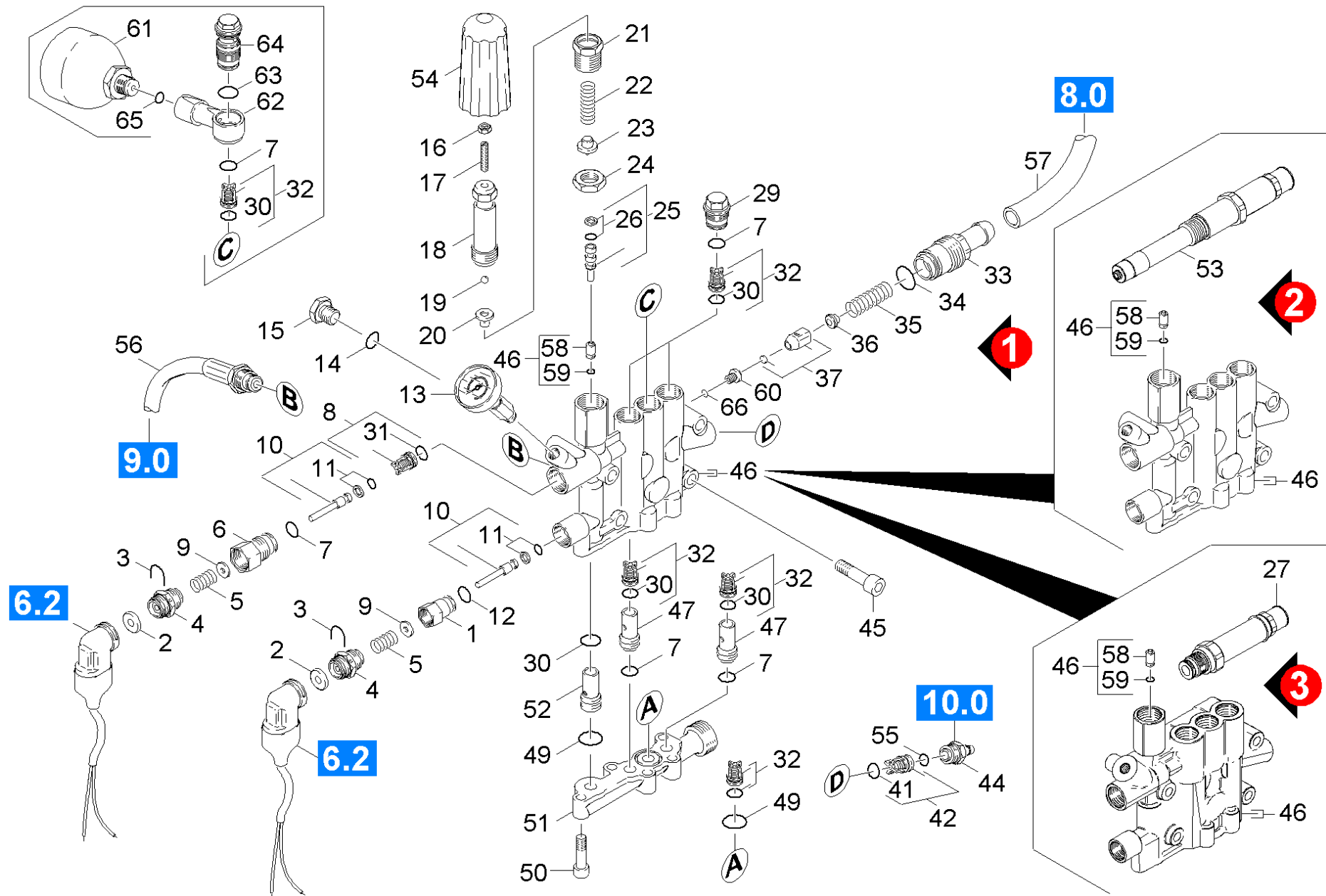


# 21 Cylinder head

Professional \ High pressure cleaner hotwater \ Electric motor \ HDS 798 C ECO \*EU \ Spare parts list HDS 798 C Eco \ Pump set \ Cylinder head



## 21 Cylinder head

Professional \ High pressure cleaner hotwater \ Electric motor \ HDS 798 C ECO \*EU \ Spare parts list HDS 798 C Eco \ Pump set \ Cylinder head

POS	Article no.	Description	Quantity	Unit	Remark	Foot note text
46	4.550-458.0	Cylinder head complete only for replacem	1.000	ST	VERSION 1 + VERSION 2	
46	4.550-925.0	Cylinder head only for replacement	1.000	ST	VERSION 3	
50	7.306-043.0	Cylinder head screw M8x30 -8.8-A2E ISO	5.000	ST		
45	7.306-125.0	Cylinder head screw M10x70-8.8-A3E ISO4	4.000	ST		
2	5.367-030.0	Diaphragm	2.000	ST		
54	5.321-579.0	Handle	1.000	ST		
22	5.332-444.0	Helical spring	1.000	ST		
35	5.332-414.0	Helical spring	1.000	ST	VERSION 1	
5	5.332-268.0	Helical spring	2.000	ST		
18	5.304-070.0	Hexagonal head screw	1.000	ST		
16	7.311-002.0	Hexagon nut M5 -8-A2E ISO 4032	1.000	ST		
24	5.311-204.0	Hexagon nut M22x1,5	1.000	ST		
56	6.391-596.0	High pressure hose DN 13	1.000	ST		
64	5.404-086.0	Hollow screw	1.000	ST		
	<b>Item text1:</b> 1.174-610.0					
21	5.404-082.0	Hollow screw	1.000	ST		
57	6.388-167.0	Hose DN15	1.000	M		TO ORDER AS CUT GOODS
44	5.443-455.0	Hose stem	1.000	ST		
55	6.362-151.0	O-Ring d. 10 x 2 NBR 70	1.000	ST		
12	6.362-853.0	O-Ring seal 4,47x1,78	1.000	ST		
59	6.362-386.0	O-Ring seal 5,0 x 1,5-NBR 80	1.000	ST		
66	6.362-703.0	O-Ring seal 6,0x1,5-NBR 70	1.000	ST	VERSION 1	
65	6.362-176.0	O-Ring seal 6,07x1,78	1.000	ST		
	<b>Item text1:</b> 1.174-610.0					
14	6.362-101.0	O-Ring seal 8 X 2	1.000	ST		
41	6.362-077.0	O-Ring seal 10 x 2,2 NBR 70	1.000	ST		
34	6.362-169.0	O-Ring seal 12,0 X 2,0	1.000	ST	VERSION 1	
30	6.363-003.0	O-Ring seal 13,0 X 2,0-NBR 90	6.000	ST		
31	6.362-381.0	O-Ring seal 13x2 - NBR 70	1.000	ST		
7	6.362-481.0	O-Ring seal 14,0 x 2,0 NBR 80	6.000	ST		
63	6.362-524.0	O-Ring seal 17,0 X 1,5	1.000	ST		
	<b>Item text1:</b> 1.174-610.0					

## 21 Cylinder head

Professional \ High pressure cleaner hotwater \ Electric motor \ HDS 798 C ECO \*EU \ Spare parts list HDS 798 C Eco \ Pump set \ Cylinder head



POS	Article no.	Description	Quantity	Unit	Remark	Foot note text
49	6.362-547.0	O-Ring seal 20,0x1,5-NBR 70	2.000	ST		
26	6.362-468.0	O-Ring seal complete 1ST.-R.	1.000	ST		
11	6.363-037.0	O-Ring seal complete 1ST.-R.	2.000	ST		
10	4.553-197.0	Piston complete only for replacement	2.000	ST		
25	4.553-198.0	Piston complete only for replacement	1.000	ST		
61	6.505-054.0	Pressure accumulator	1.000	ST		
	<b>Item text1:</b> 1.174-610.0					
13	6.421-215.0	Pressure gauge 0-300 BAR	1.000	ST		
62	5.427-304.0	Retainer pressure accumulator	1.000	ST		
	<b>Item text1:</b> 1.174-610.0					
3	5.034-494.0	Retaining bracket	2.000	ST		
53	4.580-729.0	Safety valve kpl. Ersatz	1.000	ST	VERSION 2	
27	4.580-731.0	Safety valve only for replacement	1.000	ST	VERSION 3	
15	5.411-070.0	Screw plug	1.000	ST		
4	5.411-148.0	Screw plug	2.000	ST		
52	5.110-800.0	Sleeve	1.000	ST		
47	5.110-608.0	Sleeve	2.000	ST		
100	2.883-892.0	Spare part set pump HDS 798 C	1.000	ST		
19	7.401-931.0	Sphere 5 K13 -1.4401 DIN 5401	1.000	ST		
1	5.402-686.0	Threaded part	1.000	ST		
17	7.307-017.0	Threaded pin M5x40 -St-45H-A2E ISO 4026	1.000	ST		
32	2.884-512.0	Valve (3 Stueck)	1.000	ST		
8	4.580-262.0	Valve complete	1.000	ST		
42	4.580-349.0	Valve complete chemistry	1.000	ST		
20	5.582-121.0	Valve disc	1.000	ST		
37	4.582-019.0	Valve disc complete	1.000	ST	VERSION 1	
51	5.587-192.0	Valve housing	1.000	ST		
23	5.584-114.0	Valve pin	1.000	ST		
36	5.584-060.0	Valve pin	1.000	ST	VERSION 1	
6	5.583-161.0	Valve screw	1.000	ST		
33	5.583-130.0	Valve screw	1.000	ST	VERSION 1	
29	5.583-146.3	Valve screw	3.000	ST		

## 21 Cylinder head

Professional \ High pressure cleaner hotwater \ Electric motor \ HDS 798 C ECO \*EU \ Spare parts list HDS 798 C Eco \ Pump set \ Cylinder head

POS	Article no.	Description	Quantity	Unit	Remark	Foot note text
60	5.581-231.0	Valve seat	1.000	ST	VERSION 1	
58	5.581-239.0	Valve seat	1.000	ST		
9	5.115-796.0	Washer	2.000	ST		