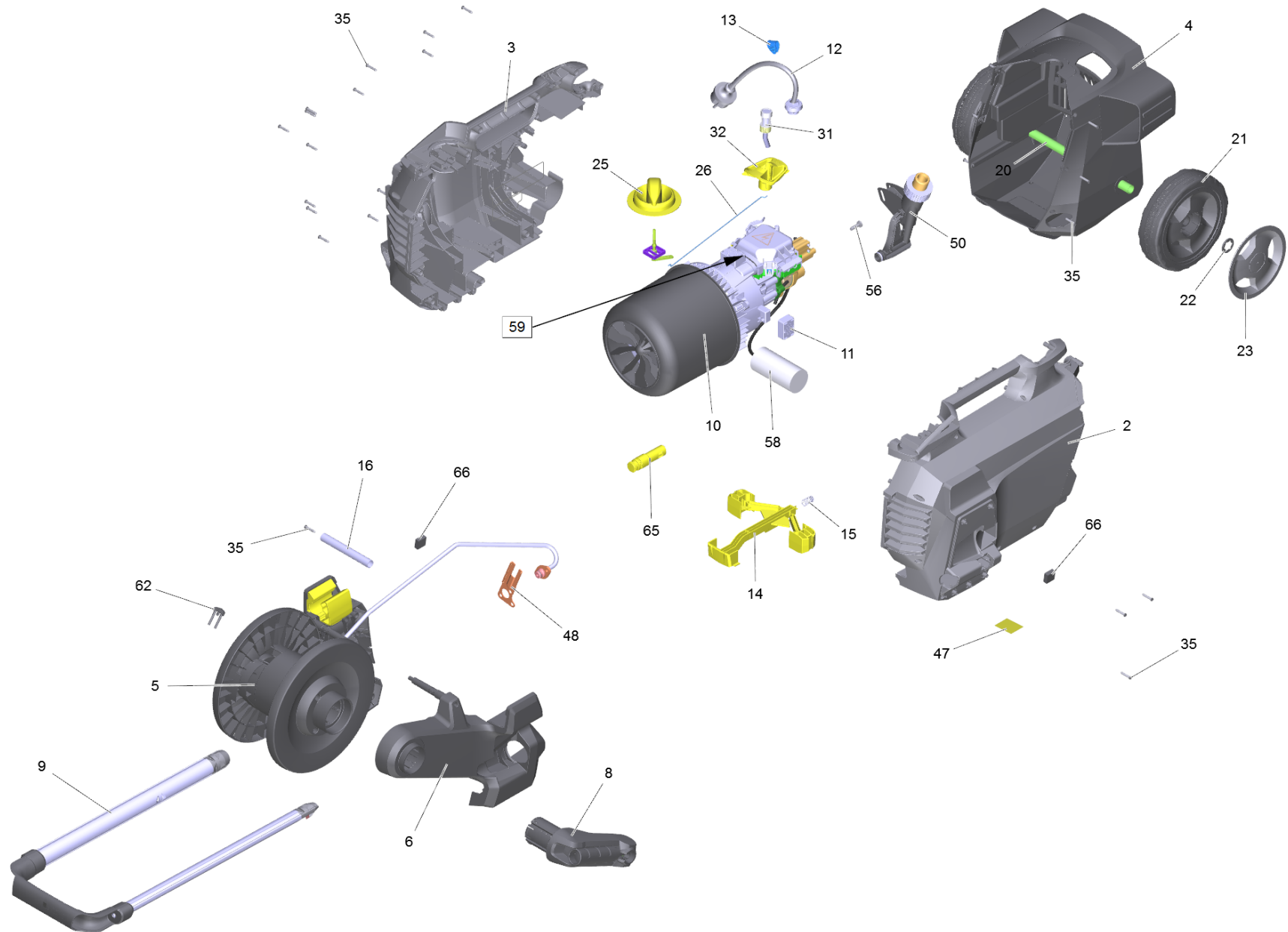


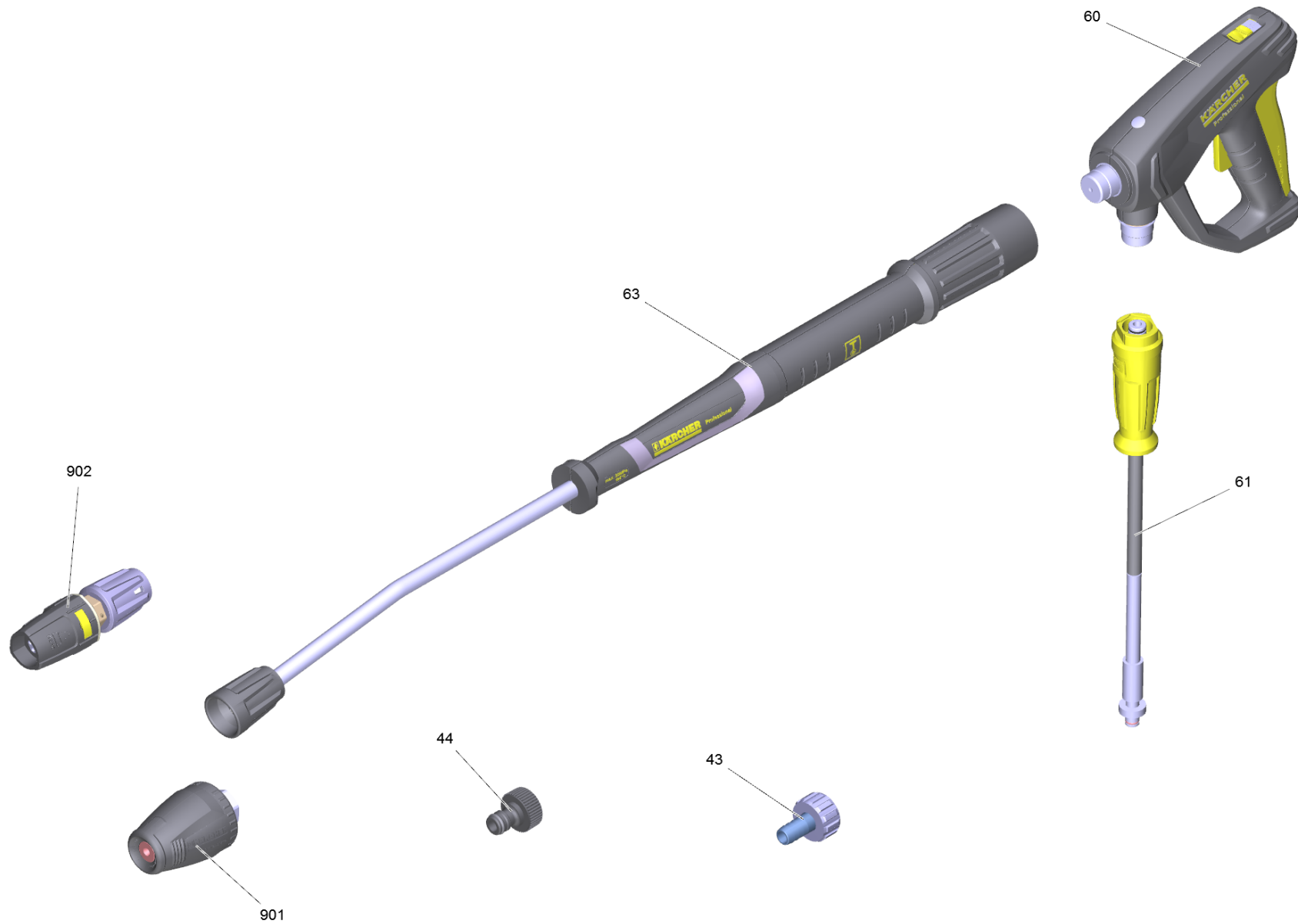
# Spare parts list high-pressure 5/17 CX P (5.974-228.0)

Professional \ High pressure cleaner cold water \ Electric motor \ HD 5/17 CX Plus \*EU \ Spare parts list high-pressure 5/17 CX P



# Spare parts list high-pressure 5/17 CX P (5.974-228.0)

Professional \ High pressure cleaner cold water \ Electric motor \ HD 5/17 CX Plus \*EU \ Spare parts list high-pressure 5/17 CX P



## Spare parts list high-pressure 5/17 CX P (5.974-228.0)

Professional \ High pressure cleaner cold water \ Electric motor \ HD 5/17 CX Plus \*EU \ Spare parts list high-pressure 5/17 CX P

**KÄRCHER**

POS	Article no.	Description	Quantity	Unit
20	5.105-399.0	Axle	1.000	ST
13	6.647-681.0	Cable clip	1.000	ST
12	6.650-201.0	Cable with plug *EU	1.000	ST
58	6.650-109.0	Capacitor with cable 40 µF (Silikon)	1.000	ST
44	6.465-031.0	Connection 3/4	1.000	ST
32	5.645-841.0	Cover cleaning agents	1.000	ST
8	4.481-302.0	Crank complete	1.000	ST
901	4.114-018.0	Dirt blaster TR 030 LowEnd	1.000	ST
60	4.118-005.0	EASY!Force Advanced	1.000	ST
31		Filter with hose RM 1,05	1.000	ST
9		Handhold complete	1.000	ST
25	4.324-057.0	Handle complete	1.000	ST
15	5.332-001.0	Helical spring	1.000	ST
6	5.646-029.0	Holder hose reel links	1.000	ST
62	4.037-013.0	Hook	1.000	ST
61	6.110-036.0	Hose assembly TR DN6 25MPa 15m	1.000	ST
5		Hose reel complete	1.000	ST
4	5.645-653.0	Housing bottom X	1.000	ST
2	5.646-048.3	Housing left for replacement	1.000	ST
3	5.646-049.3	Housing right for replacement	1.000	ST
63	4.112-006.0	Jet pipe TR 840 mm	1.000	ST
14	5.645-675.0	Locking part	1.000	ST
22	6.343-168.0	Lock washer	2.000	ST
48	5.095-519.0	Positioning water intake	1.000	ST
10		Pump set complete HD 5/17	1.000	ST
65	5.646-026.0	Retainer accessories	1.000	ST
11	5.767-029.0	Rubber buffer	4.000	ST
35	6.303-566.0	Screw 4,2x22 R2R	27.000	ST
43	4.401-056.0	Screw connector part	1.000	ST
59	7.303-031.0	Screw M4x10 -St-P2R (In6Rd)	1.000	ST
56	7.306-092.0	Screw M6x20-ST- 8.8-R3R (IN6RD)	2.000	ST
66	6.273-135.0	Sealing strip	2.000	ST
16	5.036-724.0	Sleeve	1.000	ST

## Spare parts list high-pressure 5/17 CX P (5.974-228.0)

Professional \ High pressure cleaner cold water \ Electric motor \ HD 5/17 CX Plus \*EU \ Spare parts list high-pressure 5/17 CX P



POS	Article no.	Description	Quantity	Unit
26	5.107-313.0	Switch rod	1.000	ST
902	4.117-023.0	Triple jet nozzle TR 027	1.000	ST
47	5.387-620.0	Warning sticker-Prevent from freezing	1.000	ST
50		Water intake complete	1.000	ST
23	5.515-386.0	Wheel cap large RAL 7012	2.000	ST
21	5.515-395.0	Wheel D180	2.000	ST