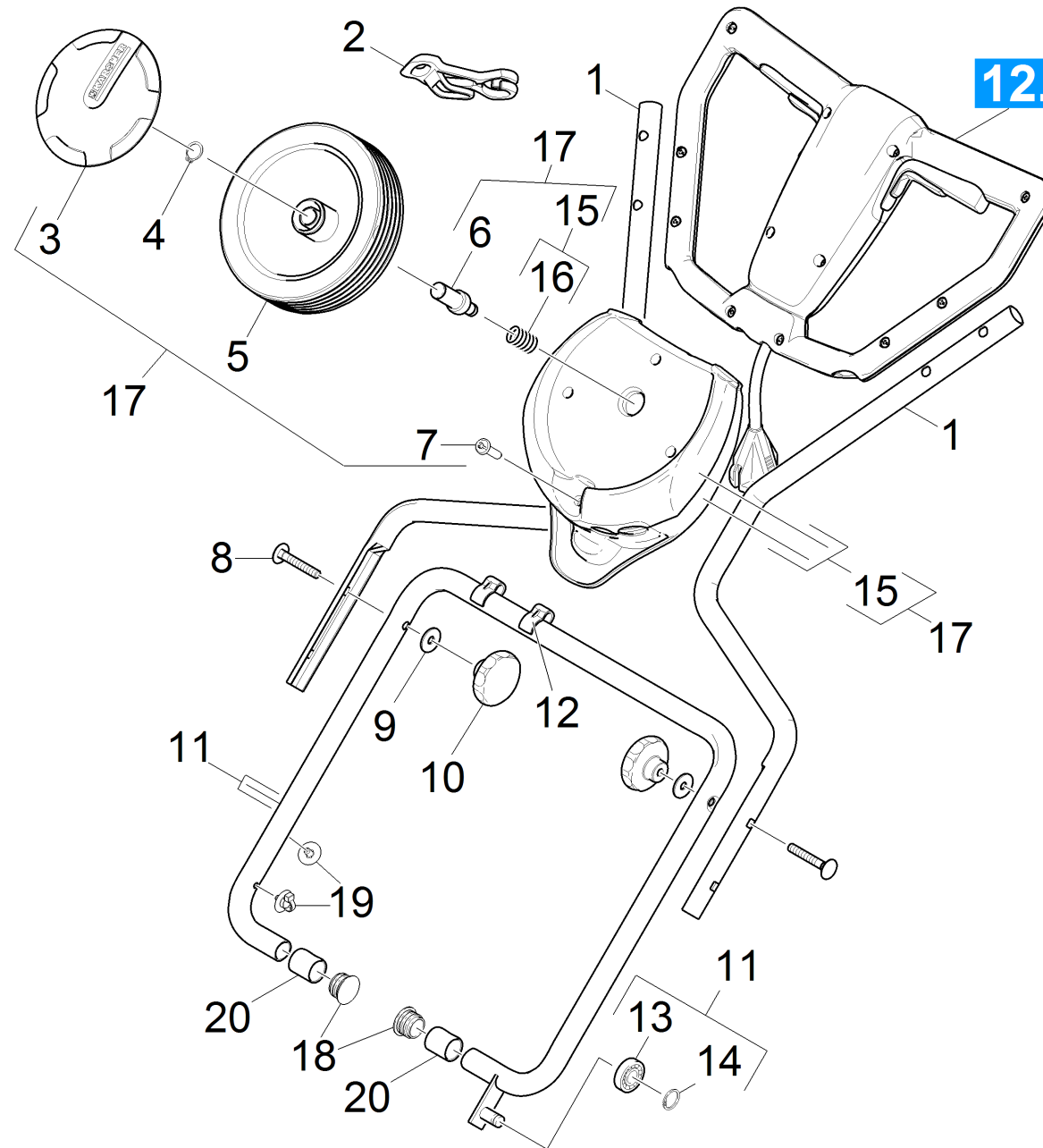


11 Retaining bracket

Professional \ Floor cleaner \ Compact \ BR 40/10C ADV *EU \ Spare parts list BR 40/10 C \ Retaining bracket and switch \ Retaining bracket



11 Retaining bracket

Professional \ Floor cleaner \ Compact \ BR 40/10C ADV *EU \ Spare parts list BR 40/10 C \ Retaining bracket and switch \ Retaining bracket

KÄRCHER

POS	Article no.	Description	Quantity	Unit	Foot note text
2	6.641-776.0	Strain relief	1	PC	
17	2.783-013.0	Add-on kit transport wheel BR 40/10C Cla	1	PC	
15	4.783-003.0	Set wheel vat	1	PC	
14	7.343-300.0	Lock washer 7-A2 DIN 6799	1	PC	
13	7.401-149.0	Ball bearing 608-2RS -Wälzl.St DIN 625	1	PC	
11	4.034-201.0	Retaining bracket bottom part replacemen	1	PC	
1	5.034-783.0	Retaining bracket top part	2	PC	
19	6.649-498.0	Cable tie with fixing 150x4,6	2	PC	
18	6.368-173.0	Drain plug	2	PC	
16	5.332-981.0	Pressure spring	2	PC	
12	5.050-426.0	Cable clip D22	2	PC	
10	6.321-177.0	Turning knob yellow D55mm	2	PC	
10	5.034-656.0	Turning knob Narzissengelb	2	PC	
9	7.312-277.0	Washer 8-200HV-A2E ISO7093-1	2	PC	
8	7.303-009.0	Saucer-head screw M8x50 -8.8-A2E DIN 603	2	PC	
6	5.034-795.0	Axle transport wheel	2	PC	
5	6.435-196.0	Wheel D 180	2	PC	
4	7.343-005.0	Locking ring 16x1-FST-PHR DIN 471	2	PC	
3	6.435-197.0	Wheel cap zinc yellow	2	PC	YELLOW
3	5.064-392.0	Wheel cap grey	2	PC	GREY
20	6.034-003.0	Bush plain bearing	2	PC	
7	7.303-108.0	Screw 5x20 -10.9-R2R (In6Rd)	4	PC	