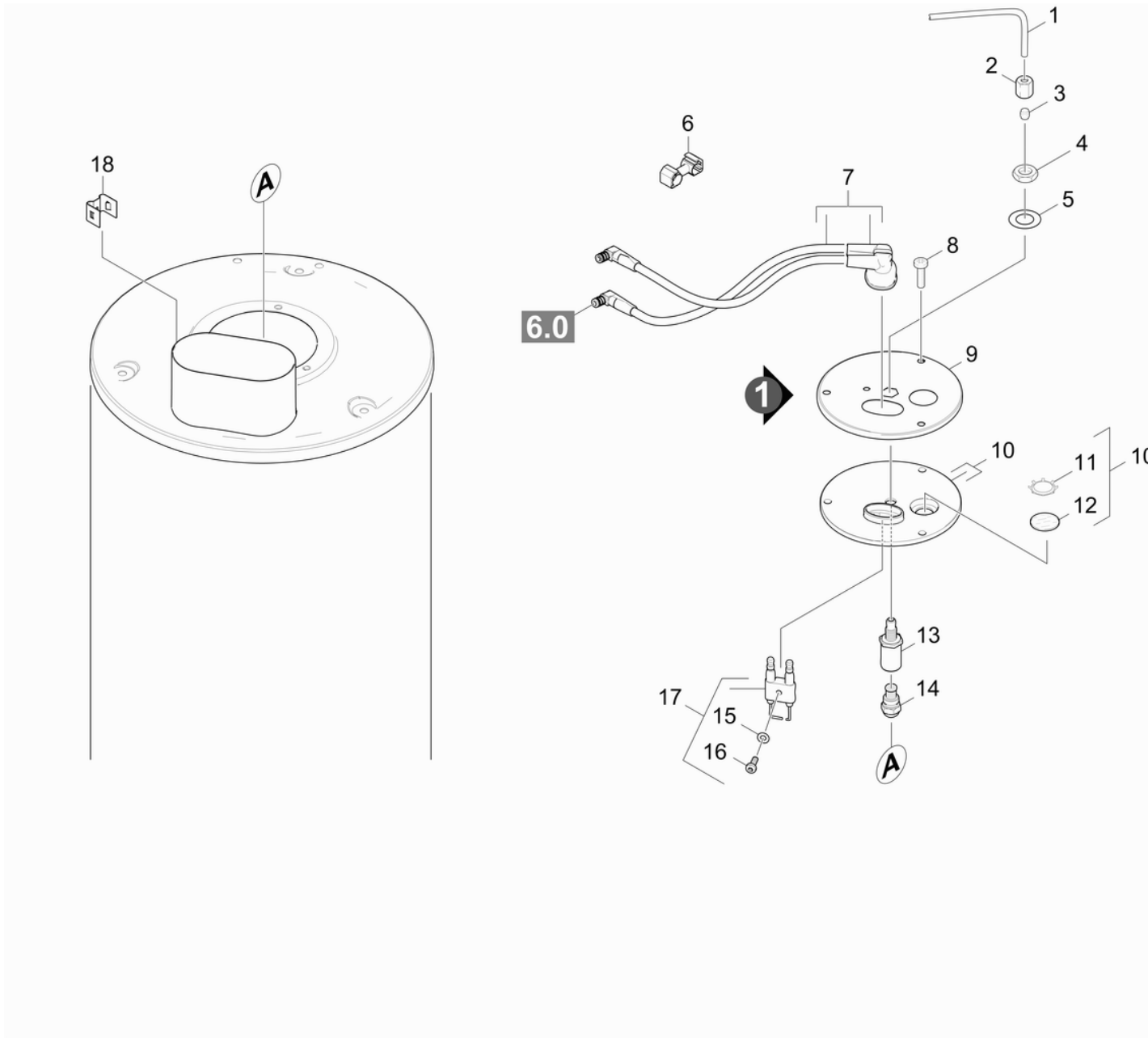


# 71 Burner cover

Professional \ High pressure cleaner hotwater \ Electric motor \ HDS 10/20 -4M \*EU-II \ Spare parts list HDS 10/20 \ Flow heater \ Burner cover



## 71 Burner cover

Professional \ High pressure cleaner hotwater \ Electric motor \ HDS 10/20 -4M \*EU-II \ Spare parts list HDS 10/20 \ Flow heater \ Burner cover

**KÄRCHER**

POS	Article no.	Description	Quantity	Unit
1	5.423-347.0	Conduit fuel	1.000	ST
17	2.638-974.0	Conversion kit ignition electrode	1.000	ST
10	4.654-218.0	Cover plate pressure boiler	1.000	ST
9	5.654-059.0	Cover pressure boiler	1.000	ST
3	6.389-263.0	Cutting ring d.4	1.000	ST
12	6.278-018.0	Glass pane	1.000	ST
4	7.311-101.0	Hexagon nut M10x1 -04-A2E ISO 8675	1.000	ST
6	6.647-527.0	Holder	1.000	ST
18	5.034-834.0	Holder probe	1.000	ST
7	4.821-100.0	Ignition cable complete	1.000	ST
14	6.415-641.0	Nozzle	1.000	ST
13	5.667-055.0	Nozzle holder	1.000	ST
8	7.303-038.0	Screw M5x12 -St-P2R (In6Rd)	3.000	ST
16	7.306-217.0	Screw M5x14 -8.8-R2R (In6Rd)	1.000	ST
11	6.343-165.0	Serrated ring	1.000	ST
15	7.312-304.0	Spring washer B 5-FST-A2E DIN 137	1.000	ST
5	7.312-302.0	Spring washer B10-FST-A2E DIN 137	1.000	ST
2	6.389-262.0	Union nut A 4-LL	1.000	ST