

Spare parts list

(4.767-145.0) Triple jet nozzle replacement 031

Table of contents

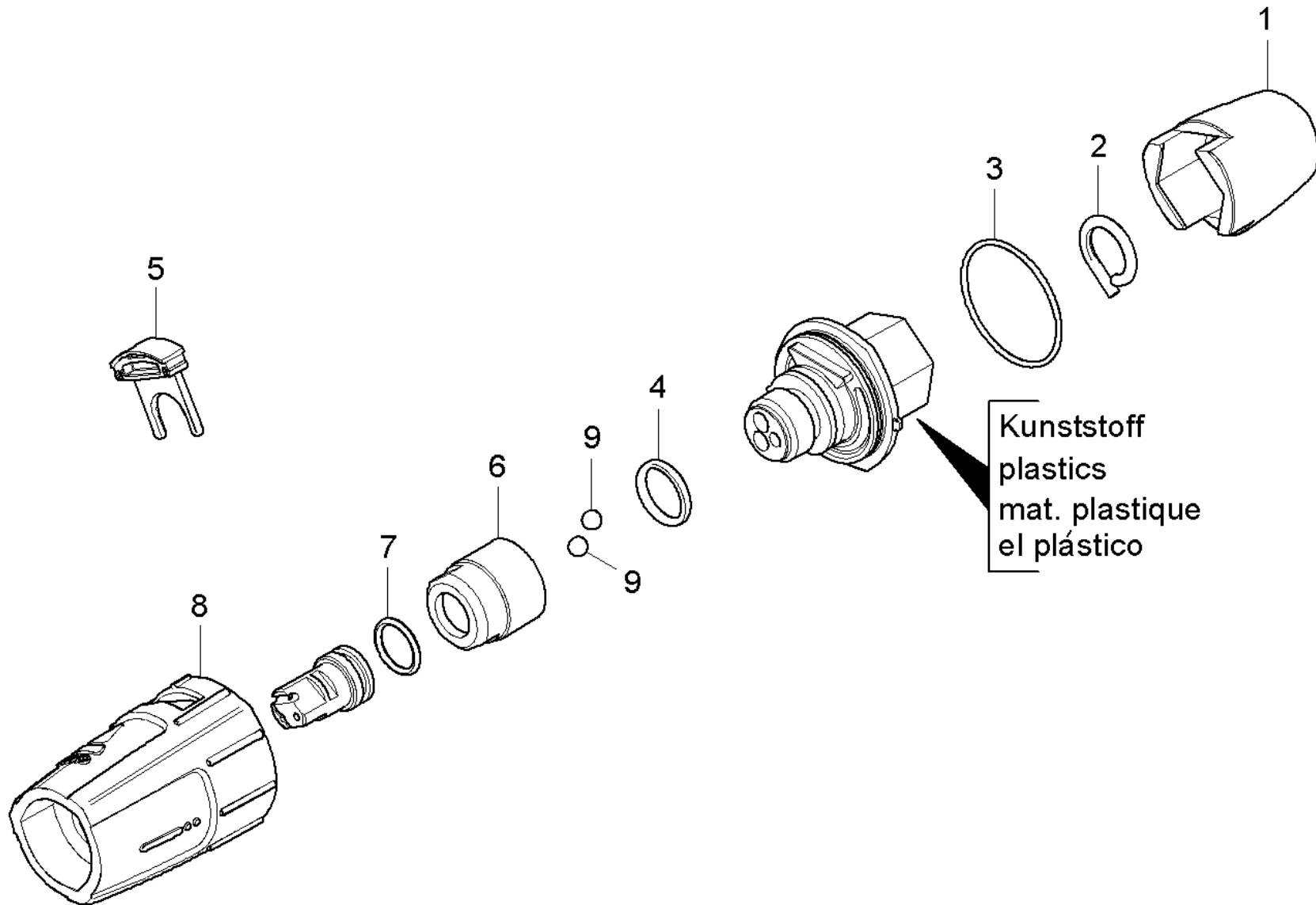
| | |
|--|---|
| Triple jet nozzle replacement 031 (4.767-145.0) | 3 |
| 2 Spare parts list triple jet nozzle (5.970-837.0) | 4 |
| 10 Triple jet nozzle plastics | 5 |
| 20 Triple jet nozzle brass | 7 |

Triple jet nozzle replacement 031 (4.767-145.0)

| POS | Article no. | Description | Quantity | Unit |
|-----|-------------|------------------------------------|----------|------|
| 2 | 5.970-837.0 | Spare parts list triple jet nozzle | 1.000 | ST |

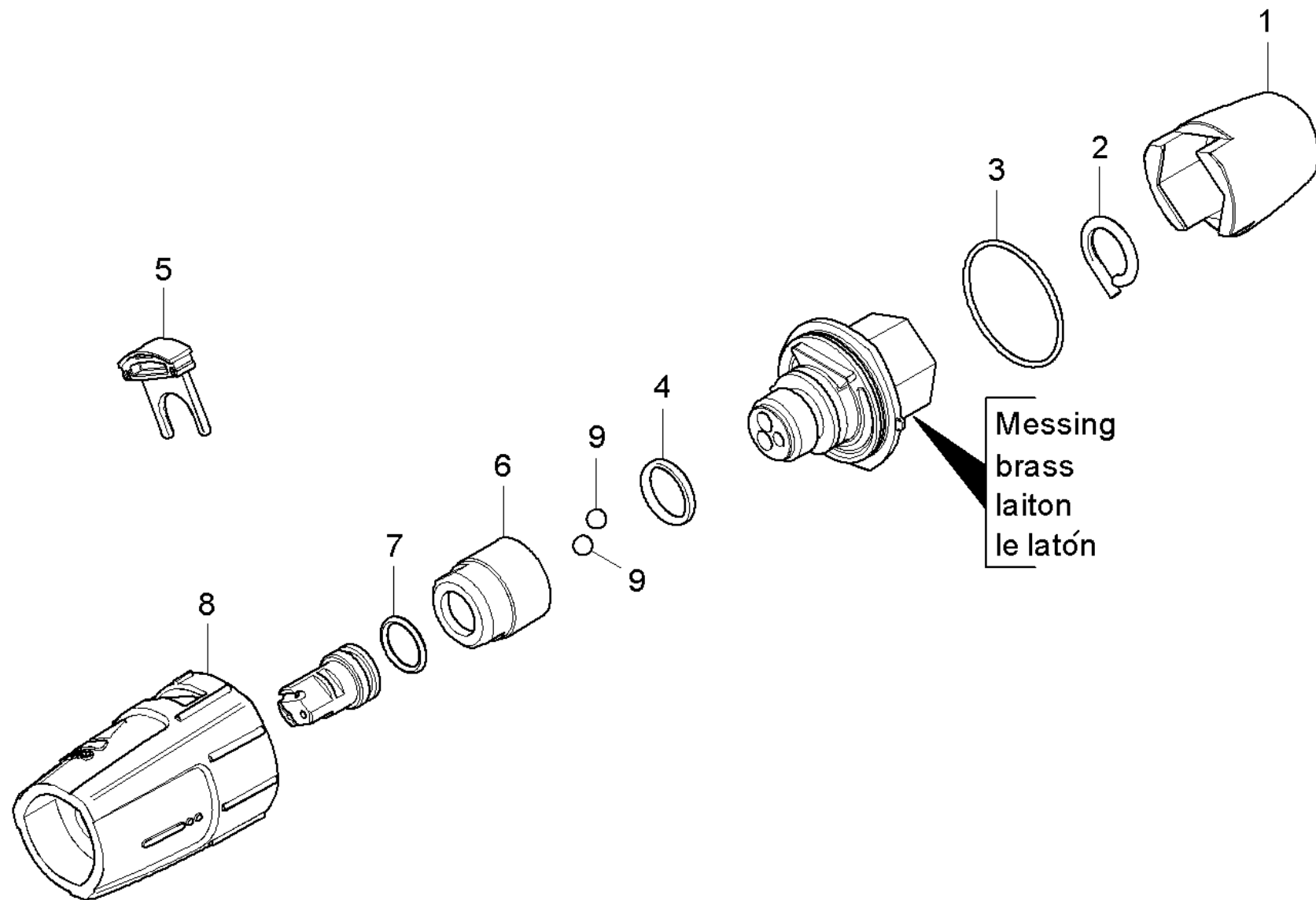
2 Spare parts list triple jet nozzle (5.970-837.0)

| POS | Description | Quantity | Unit |
|------------|----------------------------|-----------------|-------------|
| 10 | Triple jet nozzle plastics | 1.000 | ST |
| 20 | Triple jet nozzle brass | 1.000 | ST |



10 Triple jet nozzle plastics

| POS | Article no. | Description | Quantity | Unit |
|------------|--------------------|--------------------------------------|-----------------|-------------|
| 1 | 5.394-530.0 | Protection part complete | 1.000 | ST |
| 2 | 6.343-150.0 | Pin 03 | 1.000 | ST |
| 3 | 6.362-409.0 | O-Ring seal 32,0 X 1,5 | 1.000 | ST |
| 4 | 7.362-039.0 | O-Ring seal 15,5x1,5 -NBR70 DIN 3771 | 1.000 | ST |
| 5 | 5.321-884.0 | Clamp | 1.000 | ST |
| 6 | 5.311-236.0 | Nut | 1.000 | ST |
| 7 | 6.362-480.0 | O-Ring seal 12,42x 1,78 | 1.000 | ST |
| 8 | 5.394-874.0 | Protection part | 1.000 | ST |
| 9 | 7.401-902.0 | Sphere 5 G20 -1.4034 DIN 5401 | 2.000 | ST |



20 Triple jet nozzle brass

| POS | Article no. | Description | Quantity | Unit |
|------------|--------------------|-------------------------------|-----------------|-------------|
| 1 | 5.394-530.0 | Protection part complete | 1.000 | ST |
| 2 | 6.343-150.0 | Pin 03 | 1.000 | ST |
| 3 | 6.362-409.0 | O-Ring seal 32,0 X 1,5 | 1.000 | ST |
| 4 | 6.362-460.0 | O-Ring seal 14,0 X 2,5-NBR 70 | 1.000 | ST |
| 5 | 5.321-884.0 | Clamp | 1.000 | ST |
| 6 | 5.311-225.0 | Nut | 1.000 | ST |
| 7 | 6.362-480.0 | O-Ring seal 12,42x 1,78 | 1.000 | ST |
| 8 | 5.394-859.0 | Protection part | 1.000 | ST |
| 9 | 7.401-902.0 | Sphere 5 G20 -1.4034 DIN 5401 | 2.000 | ST |