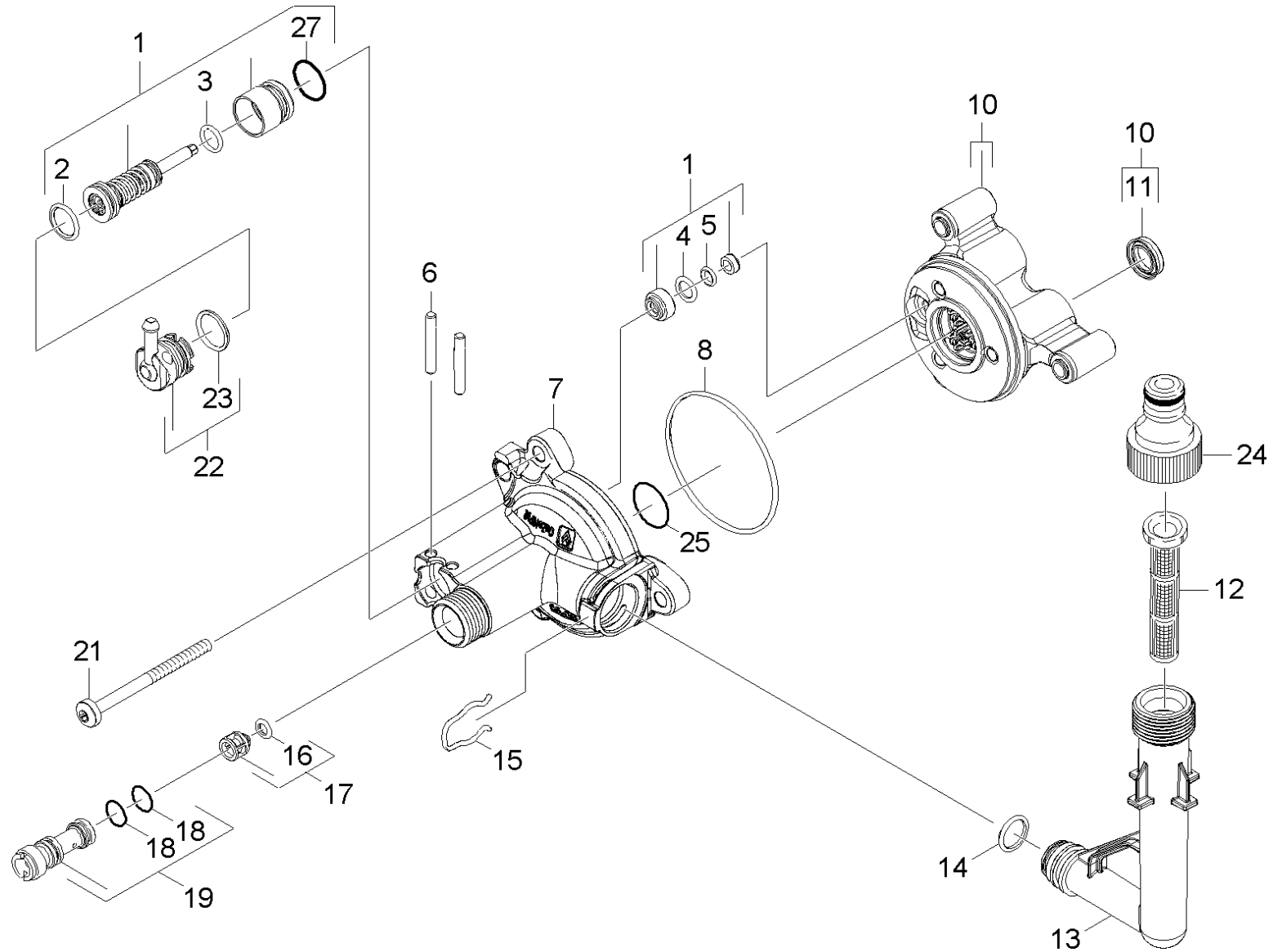


# 21 Cylinder head

Home and Garden \ High pressure cleaner cold water \ Electric motor \ K 7 \ K 7.450 \*EU \ Spare parts list K6/K7 Modul Range \ Pump set \ Cylinder head



## 21 Cylinder head

Home and Garden \ High pressure cleaner cold water \ Electric motor \ K 7 \ K 7.450 \*EU \ Spare parts list K6/K7 Modul Range \ Pump set \ Cylinder head

**KÄRCHER**

POS	Preces Nr.	Apraksts	Quantity	Unit
24	6.465-031.0	connection	1.000	ST
10	4.550-942.0	Cylinder head	1.000	ST
12	5.731-011.0	Fine filter	1.000	ST
16	6.363-613.0	Gredzenblīve 4 x 2 -NBR90	1.000	ST
4	6.362-101.0	Gredzenblīve 8 X 2	1.000	ST
18	6.362-384.0	Gredzenblīve 9x1,5 - NBR 70	2.000	ST
14	6.363-610.0	Gredzenblīve 13 x 3 -NBR	1.000	ST
2	6.362-381.0	Gredzenblīve 13x2 - NBR 70	1.000	ST
27	6.362-427.0	Gredzenblīve 15,0x2,0	1.000	ST
25	6.362-562.0	Gredzenblīve 21,95X 1,78-NBR 90	1.000	ST
11	6.363-435.0	Gredzens ar gropi 12x17x4,25/2,5	3.000	ST
7	5.062-149.0	Korpuss	1.000	ST
19	4.769-034.0	Nozzle insert only for replacement	1.000	ST
5	6.363-606.0	O-Ring seal 4,7 x 1,9 -NBR70	1.000	ST
3	6.363-614.0	O-Ring seal 9 x 2 -NBR90	1.000	ST
23	6.362-030.0	O-Ring seal 15x2 90 Shore IRHD	1.000	ST
8	6.363-616.0	O-Ring seal 60,0x2,0 -NBR70	1.000	ST
22	4.580-702.0	Plug complete	1.000	ST
21	7.306-268.0	Screw M6x70 -8.8-R3R (In6Rd)	3.000	ST
15	5.048-915.0	Spaile	1.000	ST
1	2.885-186.0	spare part	1.000	ST
6	5.314-150.0	Tapa	2.000	ST
17	4.584-022.0	Valve pin complete	1.000	ST
13	5.443-602.0	Ūdens ieplūdes caurule	1.000	ST