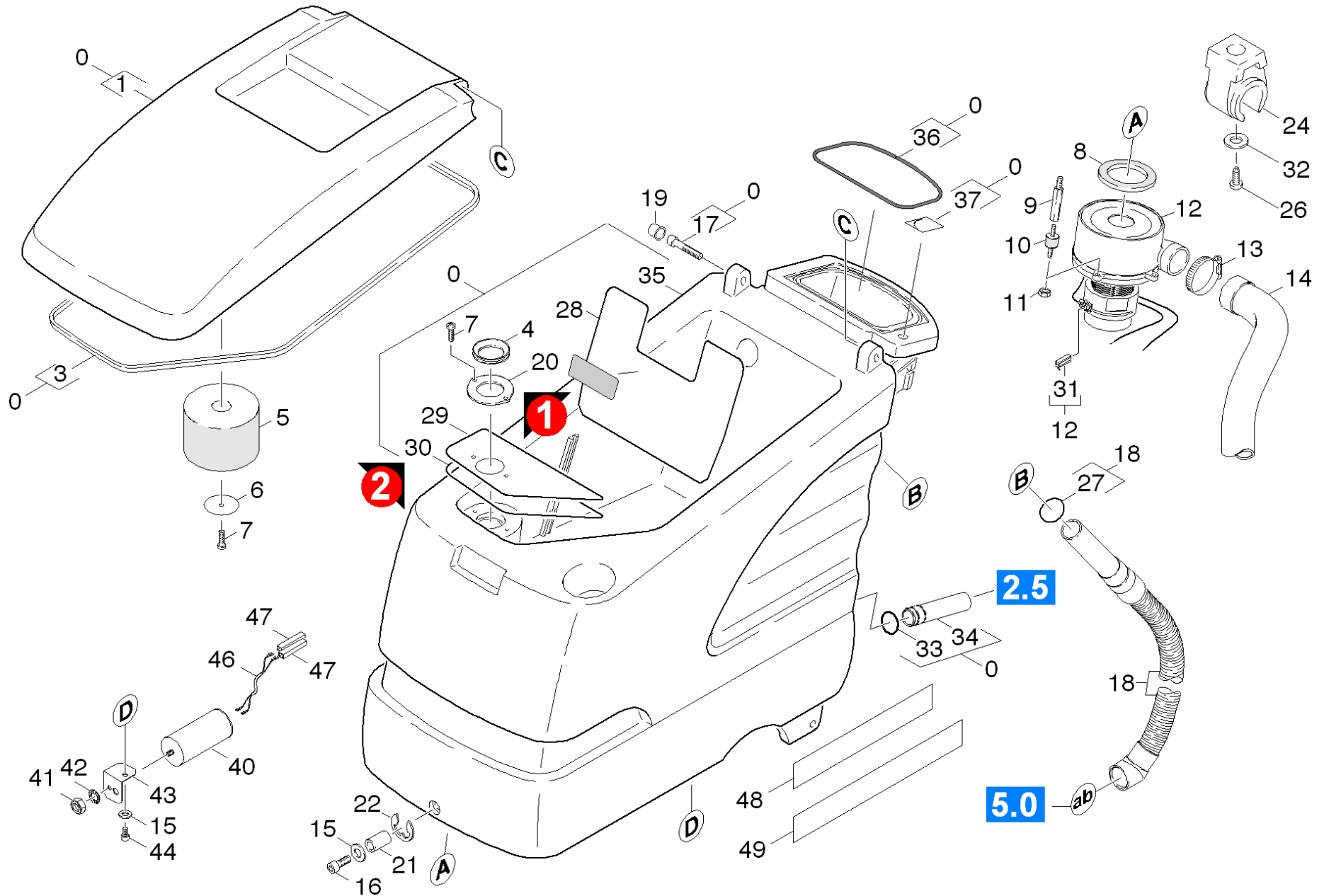


# 10 Cover and motor

Professional \ Floor cleaner \ Walk behind \ BD 530 \*EU \ Spare parts list BD 530 Netz \ Cover and motor



# 10 Cover and motor

Professional \ Floor cleaner \ Walk behind \ BD 530 \*EU \ Spare parts list BD 530 Netz \ Cover and motor



POS	Article no.	Description	Quantity	Unit	valid from	Remark	Foot note text
0	4.605-144.0	Tank and cover Bp & *CN	1	PC			
1	5.063-766.0	Cover	1	PC			
3	6.366-043.0	Sealing profile	2	m			TO ORDER AS CUT GOODS
4	5.363-344.0	Joint ring	1	PC			
5	5.585-028.0	FLOAT	1	PC			
	<b>Item text1:</b> / 1.127-141.0 / -241.0						
5	5.585-058.0	Float BR/BD 530	1	PC			
	<b>Item text1:</b> / 1.127-341.0 / -441.0 / -684.0 / -688.0						
	<b>Item text2:</b> / -806.0 / -808.0						
6	5.115-754.0	Washer	1	PC			
7	7.303-107.0	Screw 5x16 -10.9-P2R (K-In6Rd)	1	PC			
8	5.363-574.0	Joint ring	1	PC			
9	5.308-056.0	Stud bolt	3	PC			
10	6.339-021.0	Rubber buffer 2xM6-D20 H15	3	PC			
11	7.311-541.0	Hexagon nut M 6 -8-A2E EN 1661	3	PC			
12	6.490-135.0	Vacuum motor 220-240V	1	PC		220-240V 50/60HZ	
	<b>Item text1:</b> / 1.127-141.0 / -241.0 / -341.0 / -441.0						
	<b>Item text2:</b> / -806.0 / -808.0						
12	4.035-055.0	Vacuum motor replacement	1	PC		120V 60HZ	
	<b>Item text1:</b> / 1.127-684.0 / -688.0						
12	4.490-001.0	Vacuum motor only for replacement	1	PC			OLD VERSION
13	6.641-474.0	Cable tape 8-210	1	PC			
14	6.390-215.0	Soundproof hose	1	PC			
15	7.312-277.0	Washer 8-200HV-A2E ISO7093-1	3	PC			
16	5.305-204.0	Shaped screw	1	PC			
17	7.306-049.0	Cylinder head screw M 8x45-8.8-A2E ISO	2	PC			
18	4.390-002.0	Suction hose complete oil resistant	1	PC			STANDARD
18	4.390-002.0	Suction hose complete oil resistant	1	PC			OIL RESISTANT

## 10 Cover and motor

Professional \ Floor cleaner \ Walk behind \ BD 530 \*EU \ Spare parts list BD 530 Netz \ Cover and motor



POS	Article no.	Description	Quantity	Unit	valid from	Remark	Foot note text
19	6.368-295.0	Protecting cap	2	PC			
20	5.001-752.0	Plate	1	PC			VERSION 1
21	5.110-680.0	Sleeve	1	PC			
22	7.343-204.0	Lock washer 6 -CuSn8 DIN 6799	1	PC			
24	6.373-692.0	Pipe clip D 63	1	PC			
25	6.647-081.0	Cable tape	1	PC			
26	7.306-031.0	Cylinder head screw M 6x16 A2-70 DIN 7984	1	PC			
27	6.362-089.0	O-Ring seal 40,0 X 3,0	1	PC			
28	5.008-301.0	Sheet metal component	1	PC			
29	5.001-813.0	Plate	1	PC			VERSION 2
30	5.363-420.0	Seal	1	PC			VERSION 2
31	6.610-221.0	Carbon brush set	1	PC			
32	7.312-017.0	Washer 8-A2 ISO 7089	1	PC			
33	6.362-385.0	O-Ring seal 26,0 X 2,5-NBR 70	1	PC			
34	5.128-352.0	Tube	1	PC			
35	7.777-999.0	Stockpiling discontinued	1	PC	35012		
36	6.273-145.0	Cord cellular rubber	1	ZST			
37	5.382-594.0	Label water tap	1	PC			
40	6.661-224.0	Capacitor	1	PC			
	<b>Item text1:</b> / 1.127-684.0						
41	7.311-004.0	Hexagon nut M8 -8-A3E ISO 4032	1	PC			
	<b>Item text1:</b> / 1.127-684.0						
42	7.312-166.0	Toothed lock washer A8,4-FSt-A3E DIN 6797	1	PC			
	<b>Item text1:</b> / 1.127-684.0						
43	5.017-709.0	Angle	1	PC			
	<b>Item text1:</b> / 1.127-684.0						
44	7.306-119.0	Cylinder head screw M8x12 -A2-70 ISO 47	1	PC			
	<b>Item text1:</b> / 1.127-684.0						
46	4.822-228.0	Cable BD *TORN	1	PC			
	<b>Item text1:</b> / 1.127-684.0						

## 10 Cover and motor

Professional \ Floor cleaner \ Walk behind \ BD 530 \*EU \ Spare parts list BD 530 Netz \ Cover and motor

**KÄRCHER**

POS	Article no.	Description	Quantity	Unit	valid from	Remark	Foot note text
47	6.641-250.0	Coupler	2	PC			
	<b>Item text1:</b> / 1.127-684.0						
48	5.382-646.0	Label BD530 BAT	1	PC			
49	5.382-802.0	Label BD530 XL BAT	1	PC			
	<b>Item text1:</b> / 1.127-241.0 / -441.0						