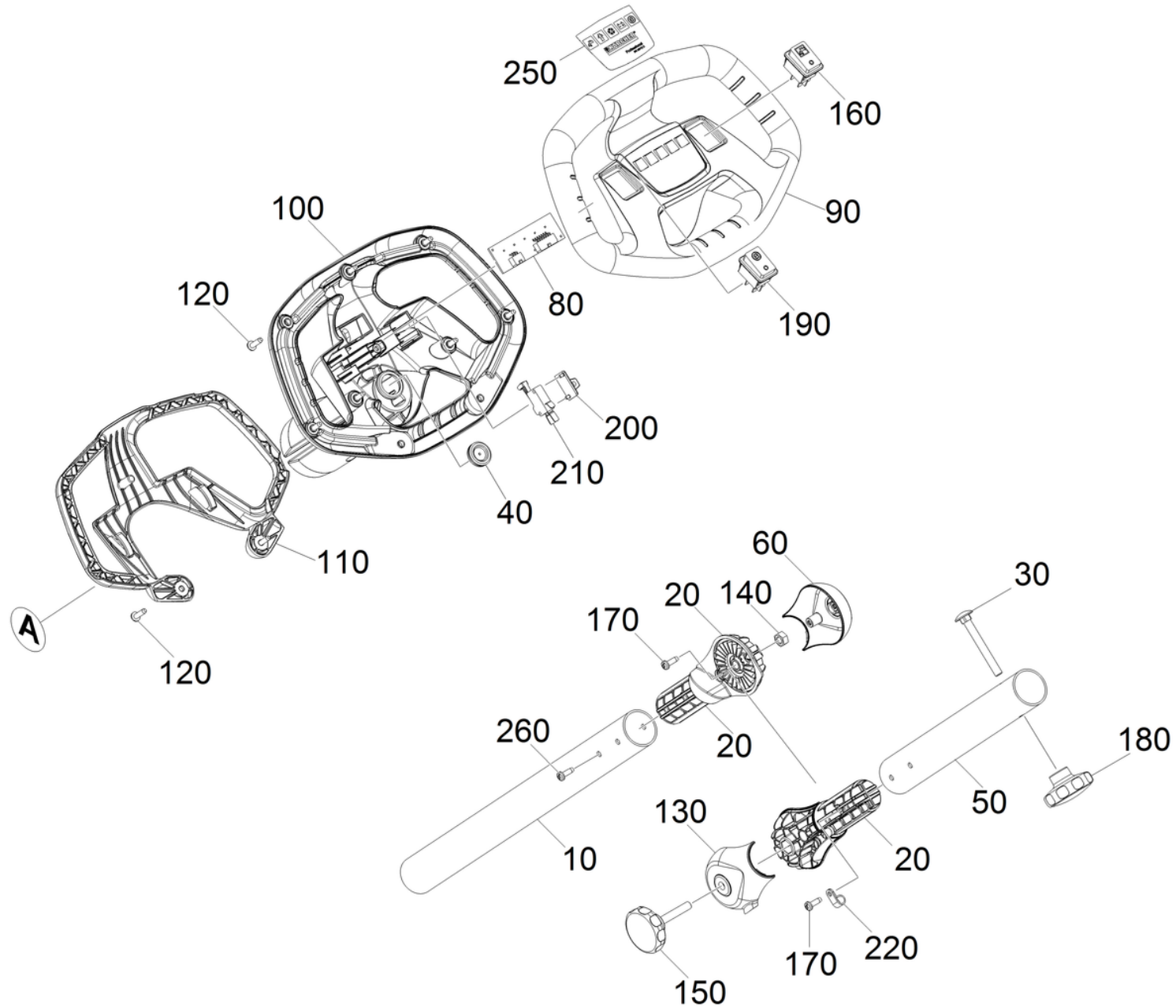


30 Steering pillar complete BD 38/12

Professional \ Floor cleaner \ Compact \ BD 38/12 C *EU \ Steering pillar complete BD 38/12



30 Steering pillar complete BD 38/12

Professional \ Floor cleaner \ Compact \ BD 38/12 C *EU \ Steering pillar complete BD 38/12

KÄRCHER

POS	Article no.	Description	Quantity	Unit
260	7.303-058.0	Countersunk screw M5x12 -St-A2R (In6Rd)	9	PC
170	7.303-296.0	Countersunk screw M5x16 -St-A2E (In6Rd)	4	PC
60	5.037-295.0	Covering cap joint	1	PC
130	5.037-324.0	Covering cap joint cable gland	1	PC
80	6.683-114.0	Diode board BR 35/12	1	PC
250	5.037-091.0	Foil control panel BD 38/12	1	PC
140	7.311-004.0	Hexagon nut M8 -8-A3E ISO 4032	1	PC
230	5.037-337.0	Joint part steering pillar	1	PC
20	5.037-439.0	Joint steering pillar worked	2	PC
220	6.373-343.0	Pipe clamp D 6	1	PC
280	5.332-981.0	Pressure spring	1	PC
40	5.365-109.0	Profile gasket	1	PC
200	5.050-654.0	Retainer micro switch	1	PC
110	5.037-319.0	Retaining bracket switch	1	PC
30	7.303-163.0	Saucer-head screw M8x70 -St-A0P DIN 603	1	PC
120	7.303-108.0	Screw 5x20 -10.9-R2R (In6Rd)	11	PC
150	6.321-179.0	Star grip	1	PC
50	5.037-291.0	Steering pillar above	1	PC
10	5.037-046.0	Steering pillar bottom	1	PC
100	5.037-293.0	Steering wheel bottom part	1	PC
90	5.037-294.0	Steering wheel top part	1	PC
210	6.631-818.0	Switch	1	PC
190	6.632-543.0	Switch ECO	1	PC
160	6.632-542.0	Switch pump	1	PC
180	6.321-177.0	Turning knob yellow D55mm	1	PC