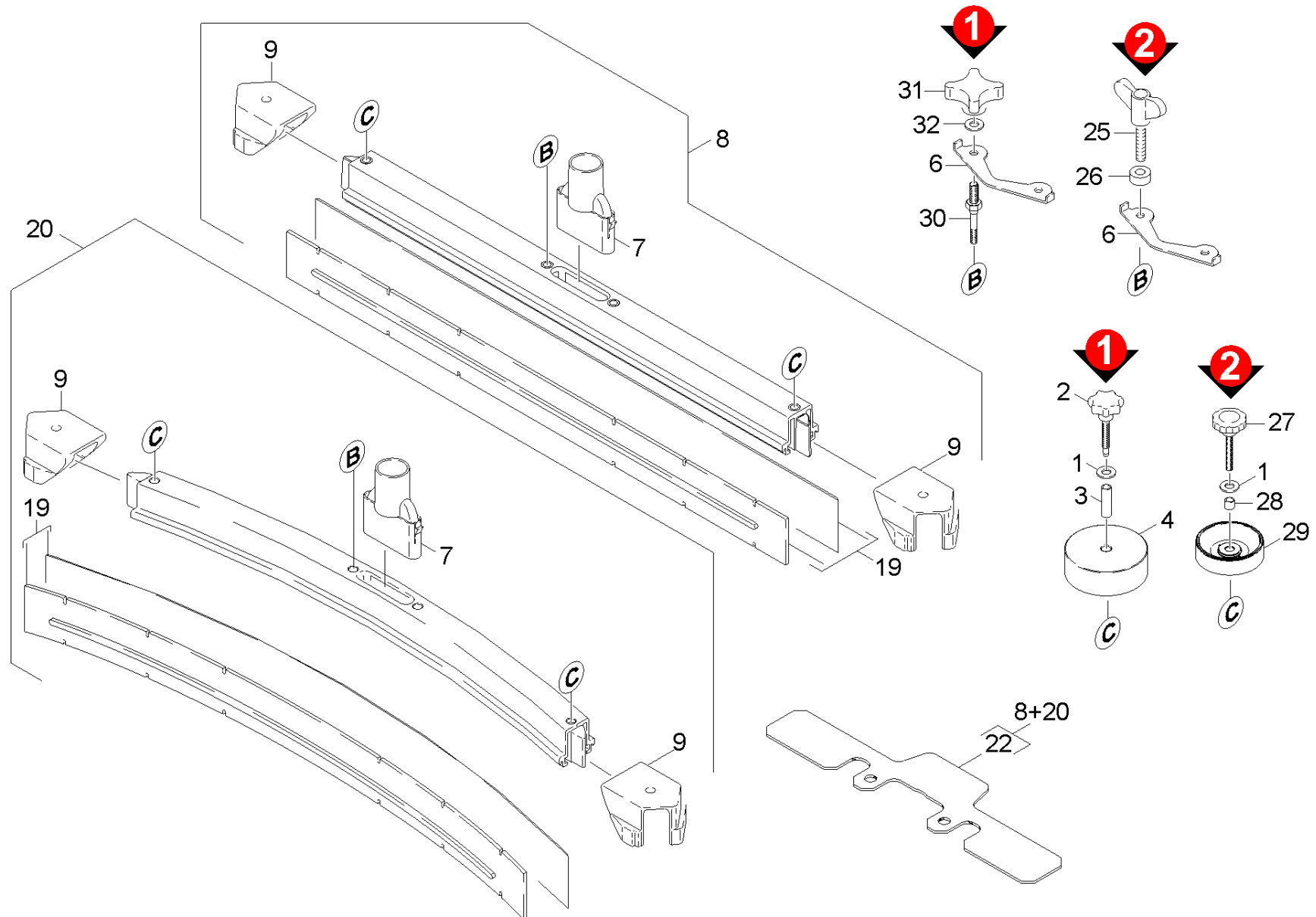


53 Suction bar

Overview technical documents/Professional/Floor cleaner/Walk behind/BR 530 O.SAUGB. *EU (1.127-321.0)/Spare parts list BR 530 Netz/50 Suction mechanism BD 530 BAT/53 Suction bar



53 Suction bar

Overview technical documents/Professional/Floor cleaner/Walk behind/BR 530 O.SAUGB. *EU (1.127-321.0)/Spare parts list BR 530 Netz/50 Suction mechanism BD 530 BAT/53 Suction bar

Rez.daļas/nodil.pakļ.dajas	Poz.	Materiāla Nr.	Nosaukums	Daudzums	Pārdoš. vienība	no sēr. Nr..	līdz sēr. Nr.	Daž. informācija
X-X	1	7.312-004.0	Paplāksne 8 -200HV-A3E ISO 7090	3.000	ST	0000000000	0000000000	
X-X	2	6.321-243.0	Star grip stainless steel D50x48	2.000	ST	0000000000	0000000000	
X-X	3	5.094-050.0	Tube	2.000	ST	0000000000	0000000000	
X-X	4	5.515-096.0	Veltnītis	2.000	ST	0000000000	0000000000	
	6	5.007-619.0	Plate suction bar	1.000	ST			
X-X	6	5.007-217.0	Baffle plate	1.000	ST	0000000000	0000000000	
X-X	7	5.031-989.0	Suction nipple	1.000	ST	0000000000	0000000000	L = 90mm
X-X	7	5.033-601.0	Suction nipple	1.000	ST			L = 150mm
X-X	8	4.777-306.0	Suction bar straight 850 AB oLR	1.000	ST	0000000000	0000000000	
X-X	9	2.885-294.0	End piece left/right part	1.000	ST	0000000000	0000000000	
X-X	19	6.273-207.0	Gumijas latai - eļļizturīgas, 890mm	1.000	ZSA	0000000000	0000000000	
X-X	19	6.273-213.0	Gumijas mēlišu komplekts, standarta	1.000	ZSA	0000000000	0000000000	
X-X	19	6.273-229.0	Gumijas latai - eļļizturīgas	1.000	ST	0000000000	0000000000	
X-X	20	4.777-316.0	Suction bar curved 850 AB oLR	1.000	ST	0000000000	0000000000	
	22	5.128-339.0	Additional weight suction bar	1.000	ST	0000000000	0000000000	
X-X	25	5.305-296.0	Spārnu skrūve M8 x 40 VA	2.000	ST			VERSION 2
X	25	5.305-286.0	Wing screw M8x	2.000	ST	0000000000	0000000000	VERSION 2
X-X	26	5.112-748.0	Sleeve	2.000	ST	0000000000	0000000000	VERSION 2
X-X	26	5.112-810.0	Sleeve	2.000	ST			VERSION 2
X-X	27	6.321-239.0	Sēņveida rokturis A Ø 50x43	2.000	ST			VERSION 2
X-X	28	5.094-231.0	Uzmava iesūkšanas latai	2.000	ST			VERSION 2
X-X	29	5.515-267.0	Ies. rullītis iesūkšanas latai	2.000	ST			VERSION 2
	30	5.308-064.0	Threaded bolt	2.000	ST	0000000000	0000000000	
X-X	31	6.321-133.0	Star handle M8X16	2.000	ST	0000000000	0000000000	
X-X	32	7.312-066.0	Washer 10 -A2 ISO 7090	2.000	ST	0000000000	0000000000	