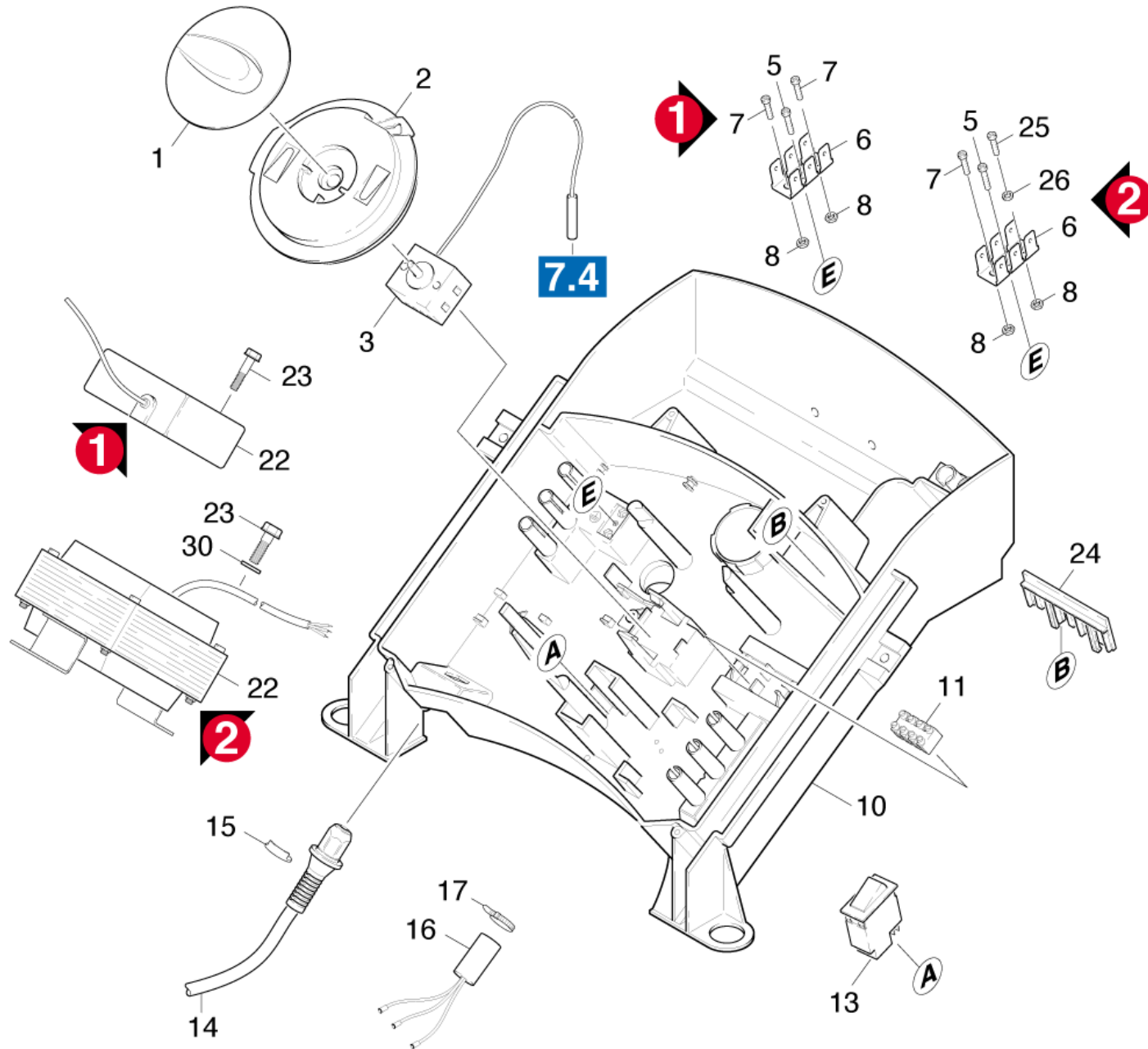


60 Electric control box

Professional \ High pressure cleaner hotwater \ Electric motor \ HDS 501 C *EU \ Spare parts list HDS 501C *EUR \ Electric control box



60 Electric control box

Professional \ High pressure cleaner hotwater \ Electric motor \ HDS 501 C *EU \ Spare parts list HDS 501C *EUR \ Electric control box

KÄRCHER

POS	Article no.	Description	Quantity	Unit	Remark
1	5.321-577.0	Handle	1.000	ST	
2	5.115-842.0	Washer	1.000	ST	
3	2.882-574.0	Conversion kit thermostat	1.000	ST	
5	7.303-026.0	Screw 4x16 -A2-70 (In6Rd)	1.000	ST	
6	6.641-270.0	Plug	1.000	ST	
7	6.303-317.0	Screw M4x10-St-A2G	2.000	ST	
8	7.311-001.0	Hexagon nut M4 -8-A2E ISO 4032	2.000	ST	
10	5.801-136.0	Mounting plate	1.000	ST	
11	6.643-249.0	Strip terminal	1.000	ZST	
13	6.631-712.0	Rocker switch	1.000	ST	
	Item text1: / 1.272-301.0				
13	6.631-758.0	Rocker switch	1.000	ST	
14	6.647-275.0	Cable with plug *GB	1.000	ST	
	Item text1: / 1.272-104.0				
14	6.647-251.0	Cable with plug	1.000	ST	
	Item text1: / 1.272-101.0 / -301.0				
14	6.647-127.0	Cable with plug *AU	1.000	ST	
	Item text1: / 1.272-103.0				
15	6.343-170.0	Retaining clip	1.000	ST	
16	6.661-092.0	Interference suppressor	1.000	ST	
17	6.641-458.0	Cable tape	1.000	ST	
22	6.622-232.0	Ignition transformer	1.000	ST	
	Item text1: / 1.272-101.0 / -301.0				
22	4.622-033.0	Ignition transformer only for replacemen	1.000	ST	
	Item text1: / 1.272-103.0 / -104.0				
23	7.777-999.0	Stockpiling discontinued	1.000	ST	VERSION 2
	Item text1: / 1.272-103.0 / -104.0				
23	7.303-111.0	Screw 5x50 -10.9-R2R (K-In6Rd)	1.000	ST	VERSION 1
	Item text1: / 1.272-101.0 / -301.0				
24	5.030-954.0	Clamping part	1.000	ST	
25	7.306-207.0	Screw M4x12 -A2-70 (In6Rd)	1.000	ST	
	Item text1: / 1.272-103.0				
26	7.312-163.0	Toothed lock washer A4,3-FST-PH DIN 679	1.000	ST	

60 Electric control box

Professional \ High pressure cleaner hotwater \ Electric motor \ HDS 501 C *EU \ Spare parts list HDS 501C *EUR \ Electric control box



POS	Article no.	Description	Quantity	Unit	Remark
	Item text1: / 1.272-103.0				
30	7.312-264.0	Washer 5-100HV-A3E ISO 7094	1.000	ST	
	Item text1: / 1.272-103.0 / -104.0				