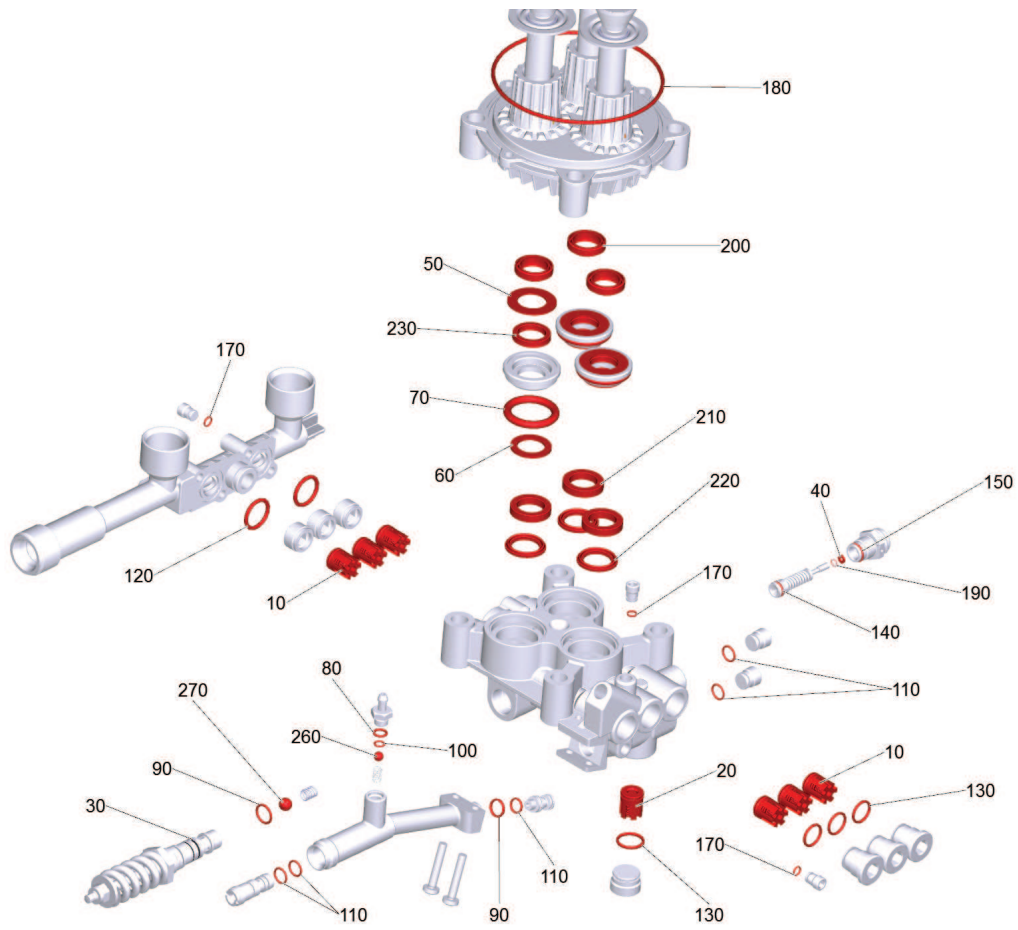


100 PUMP SET HD 1095 (2.883-902.0)

Professional \ High pressure cleaner cold water \ Electric motor \ HD 10/21 -45 *EU \ Spare parts list HD 10/21 5 \ Pump set \ Cylinder head \ PUMP SET HD 1095



100 PUMP SET HD 1095 (2.883-902.0)

Professional \ High pressure cleaner cold water \ Electric motor \ HD 10/21 -45 *EU \ Spare parts list HD 10/21 5 \ Pump set \ Cylinder head \ PUMP SET HD 1095

KÄRCHER

POS	Article no.	Description	Quantity	Unit
200	6.365-052.0	Grooved ring 20X28X6/8	3.000	ST
210	6.365-377.0	Grooved ring 20x30x6	3.000	ST
90	6.362-151.0	O-Ring d. 10 x 2 NBR 70	2.000	ST
190	6.363-241.0	O-Ring seal 2,90x1,78	1.000	ST
100	6.363-597.0	O-Ring seal 5,28 x 1,78	1.000	ST
80	6.362-113.0	O-Ring seal 6,0 x 2,0 NBR 70	1.000	ST
170	6.362-703.0	O-Ring seal 6,0x1,5-NBR 70	3.000	ST
140	6.363-611.0	O-Ring seal 8,73 x 1,78 -NBR	1.000	ST
110	6.362-384.0	O-Ring seal 9x1,5 - NBR 70	6.000	ST
150	6.362-577.0	O-Ring seal 11,0 X 1,5-NBR 70	1.000	ST
130	6.362-481.0	O-Ring seal 14,0 x 2,0 NBR 80	4.000	ST
160	6.362-580.0	O-Ring seal 17,0 X 2,0-NBR 70	1.000	ST
120	6.362-469.0	O-Ring seal 21,95X 1,78	2.000	ST
70	6.362-092.0	O-Ring seal 36,0 X 2,0-NBR 70	3.000	ST
180	6.363-228.0	O-Ring seal 114 x 3	1.000	ST
230	6.365-380.0	Set of gaskets low-pressure	3.000	ST
270	7.401-910.0	Sphere 3/8 G80-1.4034 DIN 5401	1.000	ST
260	7.401-908.0	Sphere 7 G300 -1.4301 DIN 5401	1.000	ST
30	5.114-512.0	Supportring	1.000	ST
40	5.114-513.0	Supportring	1.000	ST
220	6.365-378.0	Supportring 20x30x4,2	3.000	ST
10	2.884-512.0	Valve (3 Stueck)	2.000	ST
20	4.580-594.0	Valve complete	1.000	ST
50	5.115-537.0	Washer	3.000	ST
60	5.115-538.0	Washer	3.000	ST