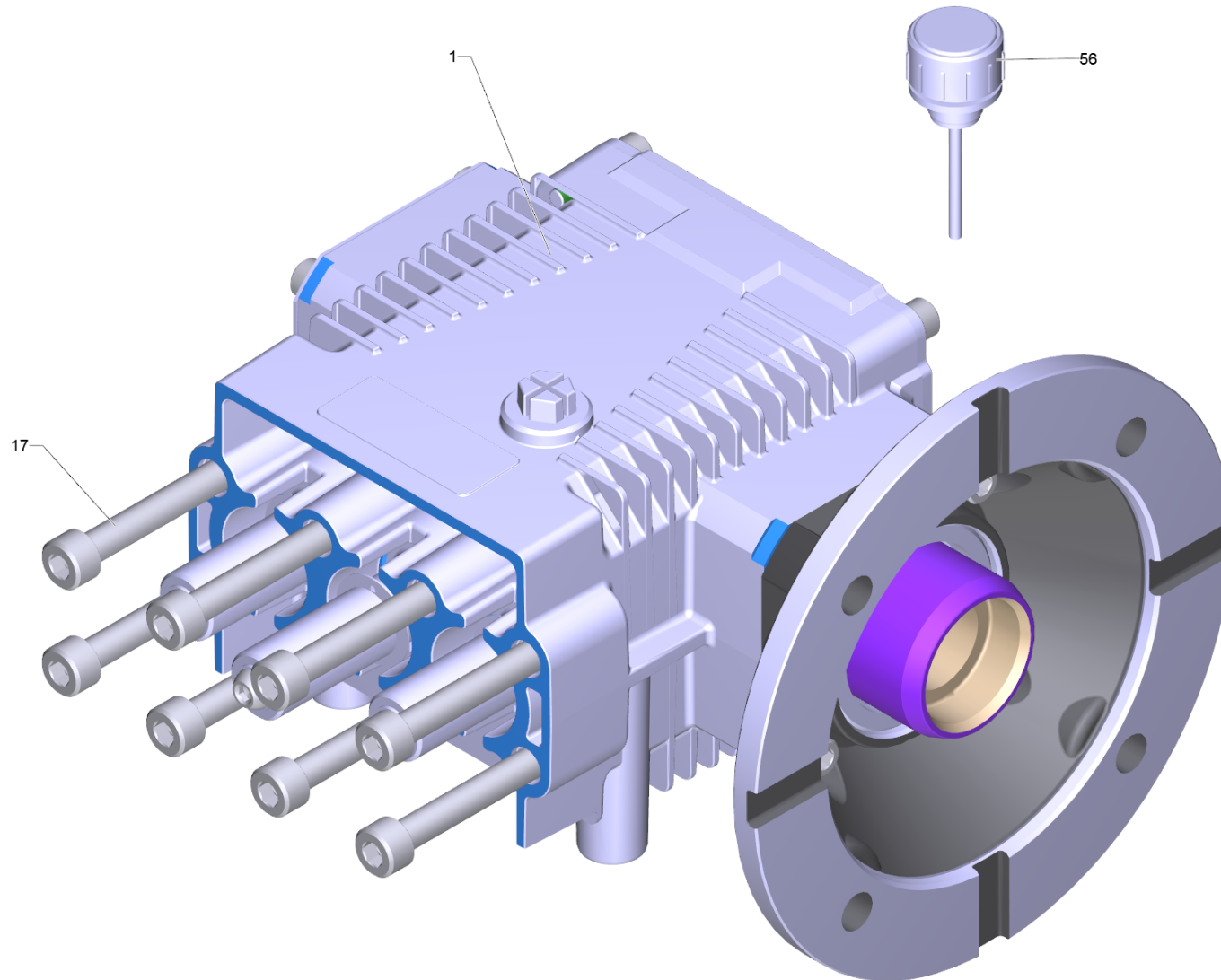


# Pump set only for replacement HD 9/20 (9.751-078.0)

Professional \ High pressure cleaner cold water \ Electric motor \ HD 9/20-4 \*KAP \ Spare parts list HD 9/20-4 \ Pump set \ Transmission \ Pump set only for replacement HD 9/20



## Pump set only for replacement HD 9/20 (9.751-078.0)

Professional \ High pressure cleaner cold water \ Electric motor \ HD 9/20-4 \*KAP \ Spare parts list HD 9/20-4 \ Pump set \ Transmission \ Pump set only for replacement HD 9/20



POS	Article no.	Description	Quantity	Unit
17	7.306-047.0	Cylinder head screw M8x60 -8.8-A2E ISO4	8	PC
56	9.761-022.0	Oil level gauge G 3/8"	1	PC
1	9.751-058.0	Pump set HD 9/20	1	PC