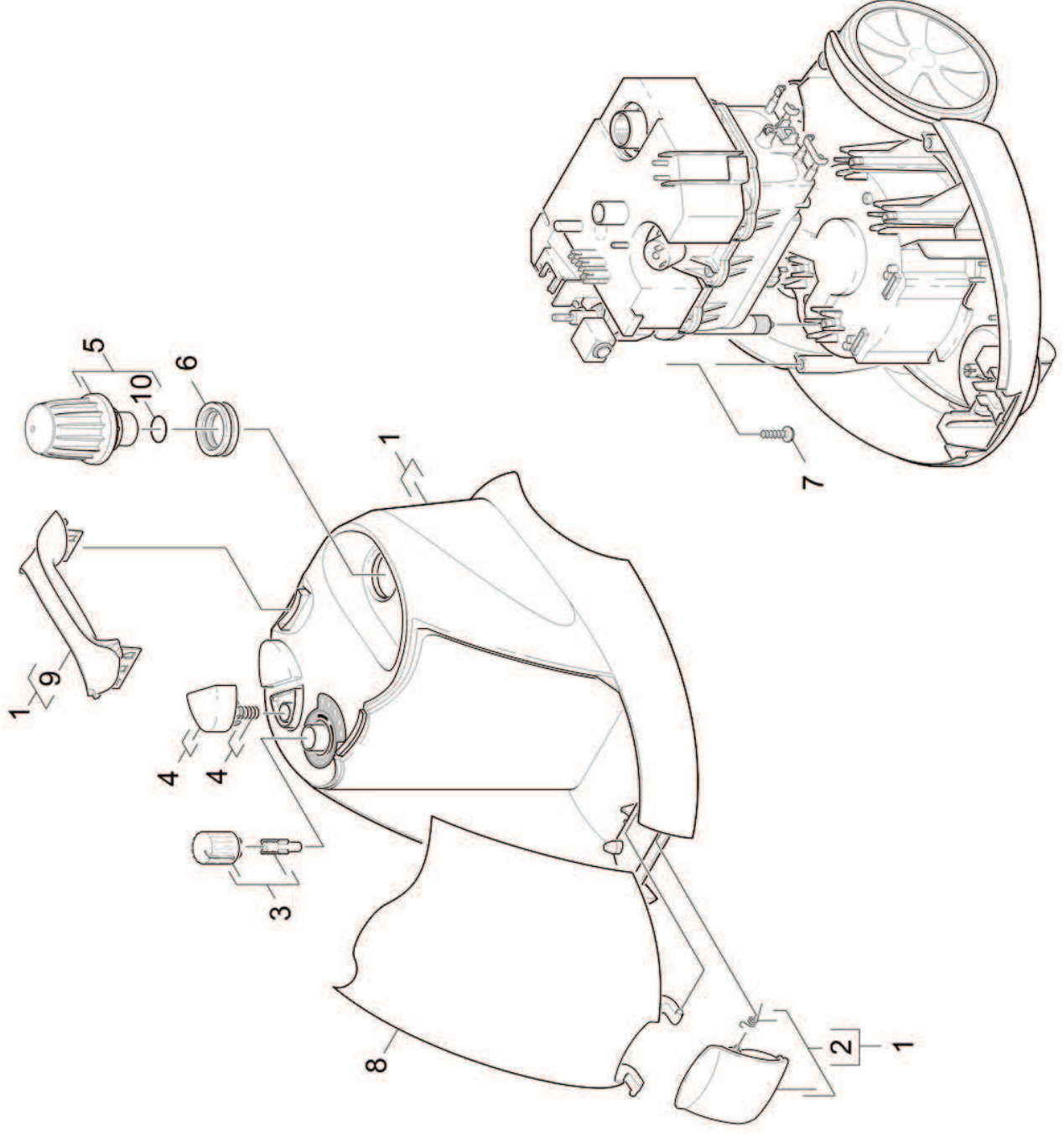


1.1 Appliance top part



1.1 Appliance top part

| POS | Article no. | Description                          | Quantity | Unit |
|-----|-------------|--------------------------------------|----------|------|
| 1   | 4.060-548.0 | Housing kit SC 1502                  | 1.000    | ST   |
| 2   | 4.063-757.0 | Covering cap complete                | 1.000    | ST   |
| 3   | 4.321-163.0 | Button complete only for replacement | 1.000    | ST   |
| 4   | 4.324-014.0 | Pushbutton completely                | 1.000    | ST   |
| 5   | 4.590-093.0 | Safety lock 3/4"-0,7MPa (7bar)       | 1.000    | ST   |
| 6   | 5.363-380.0 | Seal                                 | 1.000    | ST   |
| 7   | 7.303-108.0 | Screw 5x20 -10.9-R2R (In6Rd)         | 6.000    | ST   |
| 8   | 4.063-760.0 | Cover accessory shed                 | 1.000    | ST   |
| 9   | 5.321-700.0 | Handhold                             | 1.000    | ST   |
| 10  | 6.362-927.0 | O-Ring seal 21,89X 2,62 -EPDM        | 1.000    | ST   |