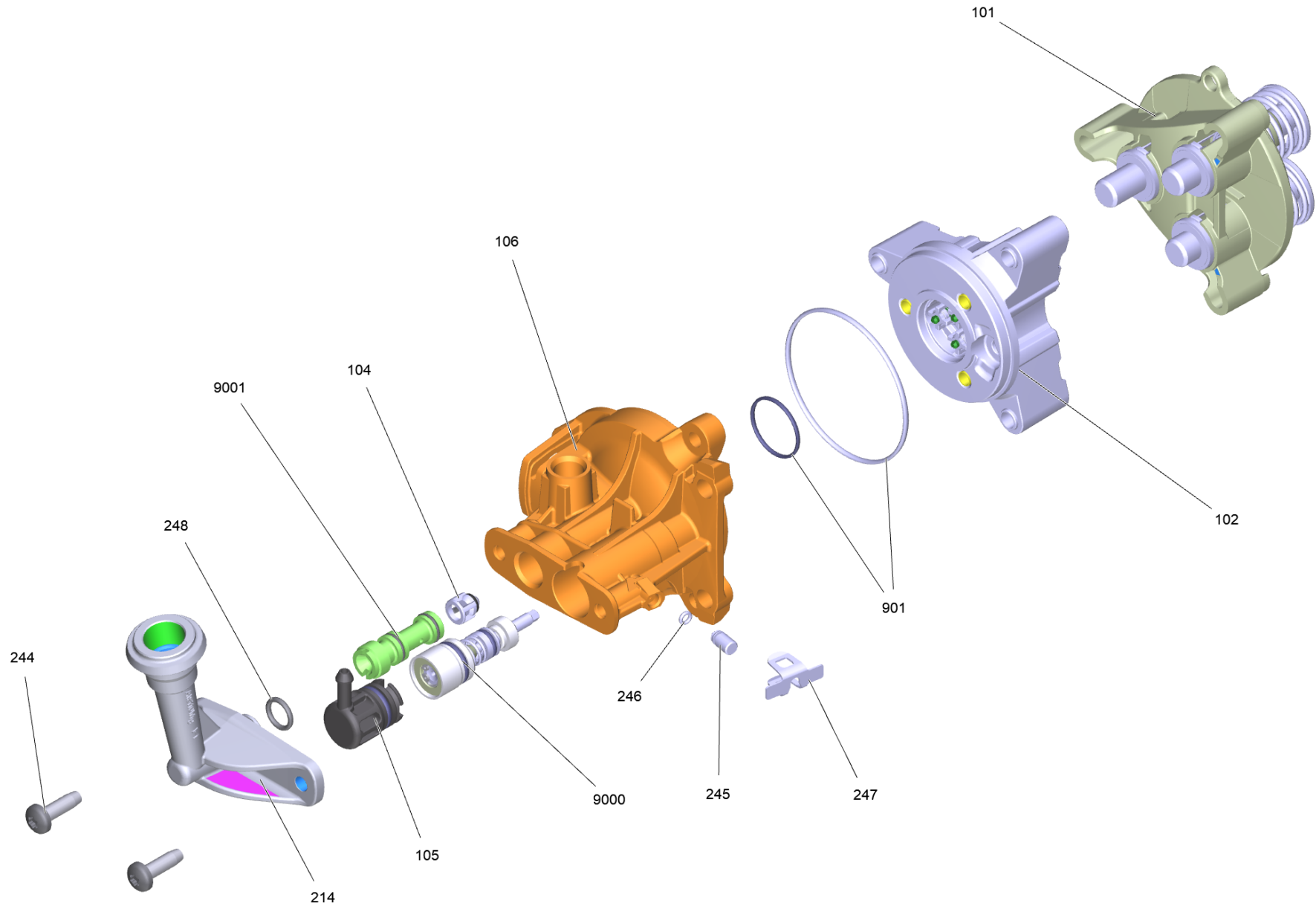


# 51 Pump head complete K7 \*EU

Home and Garden \ High pressure cleaner cold water \ Electric motor \ K 7 \ K 7 Full Control Home \*EU \ Spare parts list K7 Full Contoll Home \*EU \ Pump set complete K7 2016 \ Pump head complete K7 \*EU



## 51 Pump head complete K7 \*EU

Home and Garden \ High pressure cleaner cold water \ Electric motor \ K 7 \ K 7 Full Control Home \*EU \ Spare parts list K7 Full Contoll Home \*EU \ Pump set complete K7 2016 \ Pump head complete K7 \*EU

**KÄRCHER**

| POS  | Article no. | Description                                  | Quantity | Unit |
|------|-------------|--|----------|------|
| 247  | 5.048-047.0 | Clamp pressure sensor                        | 1        | PC   |
| 102  | 9.002-525.0 | Cylinder head alluminio completo (c/imballo) | 1        | PC   |
| 214  | 5.789-070.0 | High-pressure outlet                         | 1        | PC   |
| 106  | 5.062-705.3 | Housing K7                                   | 1        | PC   |
| 9001 | 4.769-034.0 | Nozzle insert only for replacement           | 1        | PC   |
| 248  | 6.362-151.0 | O-Ring d. 10 x 2 NBR 70                      | 1        | PC   |
| 246  | 6.363-625.0 | O-Ring seal 2,7x1,5 NBR90                    | 1        | PC   |
| 101  |             | Piston guidance complete                     | 1        | PC   |
| 245  | 5.443-019.0 | Plug   | 1        | PC   |
| 105  | 9.002-523.0 | Plug completo K7 (c/imballo)                 | 1        | PC   |
| 244  | 7.303-048.0 | Screw M6x20 -St-R3R (In6Rd)                  | 2        | PC   |
| 9000 | 2.885-186.0 | Spare parts set excess-current               | 1        | PC   |
| 901  | 4.100-834.0 | Spare parts set seals                        | 1        | PC   |
| 104  | 4.584-022.0 | Valve pin complete                           | 1        | PC   |