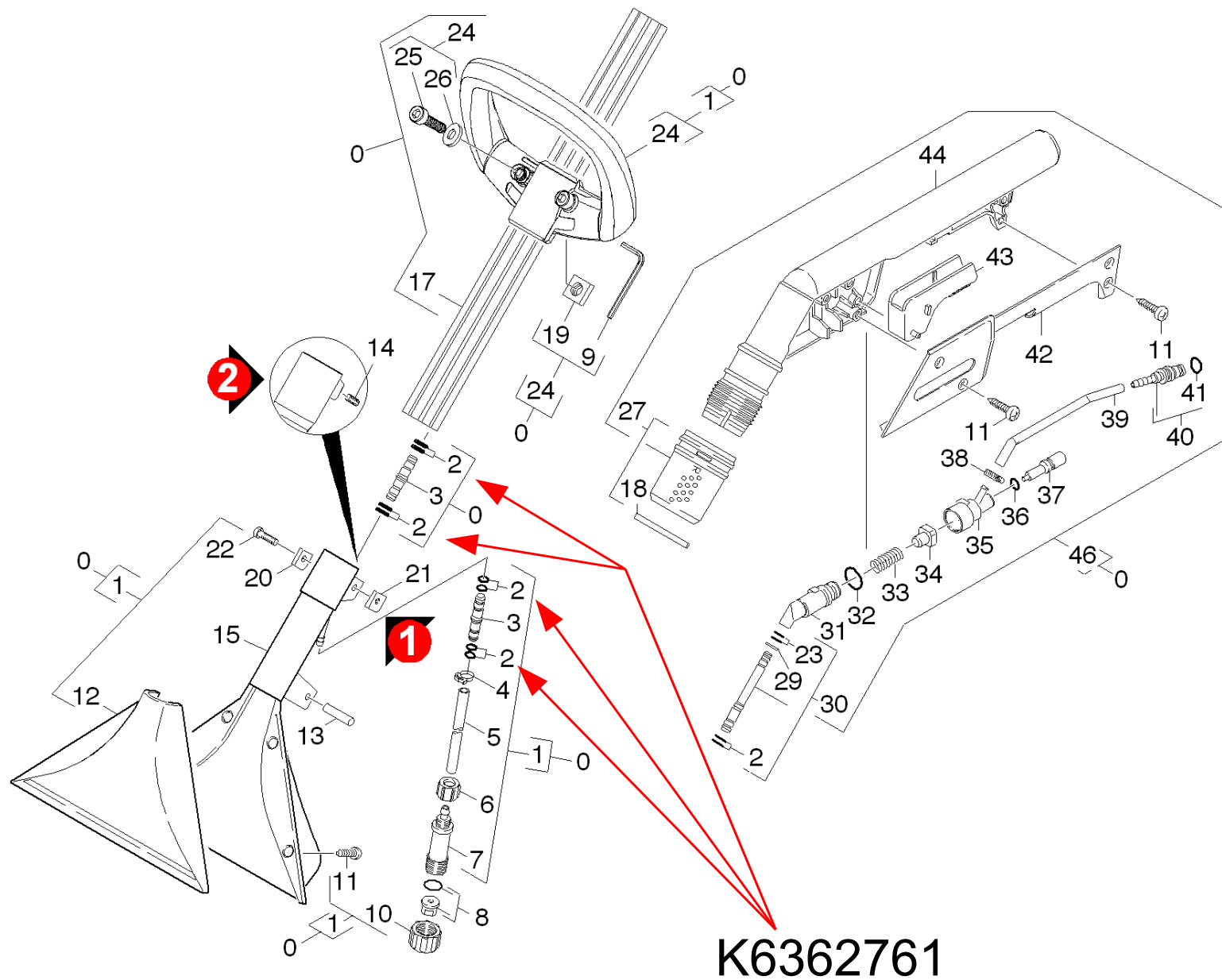


62 Floor tool (0.164-274.0)

Overview technical documents/Professional/Spray extraction/PUZZI 300 S (1.101-109.0)/Spare parts list PUZZI 300/60 Floor tool complete/62 Floor tool (0.164-274.0)



62 Floor tool (0.164-274.0)

Overview technical documents/Professional/Spray extraction/PUZZI 300 S (1.101-109.0)/Spare parts list PUZZI 300/60 Floor tool complete/62 Floor tool (0.164-274.0)

ET/VT (spare/wear parts)	Pos	Material #	Name	Qty.	Unit	from ser.nr.	up to ser.nr.	Footnote text
X	0	4.130-394.0	Nozzle metal with packing	1.000	ST	00000000000000000000		
	1	4.130-398.0	Floor tool metal	1.000	ST	00000000000000000000		
X-X	2	6.362-472.0	O-Ring seal 6,0 X 1,0-NBR 70	8.000	ST	00000000000000000000		
X	3	5.127-021.0	Extension	2.000	ST	00000000000000000000		
X-X	4	6.389-882.0	Hose clip 8,5-10,0	1.000	ST	00000000000000000000		
	5	6.388-326.0	Hose DN 6	1.000	M	00000000000000000000		TO ORDER AS CUT GOODS
X	6	6.388-381.0	Union nut	1.000	ST	00000000000000000000		
	7	5.401-053.0	Screw connector part	1.000	ST	00000000000000000000		
	8	2.884-546.0	Nozzles set	1.000	ST	00000000000000000000		
	9	7.815-131.0	Cranked wrench key 5,0-St ISO 2936	1.000	ST	00000000000000000000		
	10	5.310-043.0	Nut	1.000	ST	00000000000000000000		
X-X	11	7.303-116.0	Screw 4x12-A2-70 (IN6RD)	8.000	ST	00000000000000000000		
X-X	12	5.777-027.0	Cover suction nozzle	1.000	ST	00000000000000000000		
	13	7.314-659.0	Straight grooved pin 5x24 Kunstst. ISO87	1.000	ST	00000000000000000000		
	14	7.307-030.0	Threaded pin M10x12 -A2-21H ISO4026	1.000	ST			VERSION 2
	15	4.130-398.0	Floor tool metal	1.000	ST	00000000000000000000		
	16	6.362-727.0	O-Ring seal 30,0 X 1,0-NBR 70	1.000	ST	00000000000000000000		
	17	5.032-822.0	Suction tube ALU	1.000	ST	00000000000000000000		
	18	5.343-014.0	Locking ring	1.000	ST	00000000000000000000		
	19	7.311-571.0	Square nut M6 -05-A2E DIN 557	2.000	ST	00000000000000000000		
	20	5.373-907.0	Spacer with bore	1.000	ST	00000000000000000000		VERSION 1
	21	5.373-906.0	Spacer with threaded	1.000	ST	00000000000000000000		VERSION 1
X-X	22	7.306-182.0	Screw M5x16 -A2-70 (In6Rd)	1.000	ST	00000000000000000000		VERSION 1
	23	6.362-761.0	O-Ring seal 4,0 X 1,2	2.000	ST	00000000000000000000		
	24	4.321-186.0	Hand grip PUZZI 100/200	1.000	ST	00000000000000000000		

62 Floor tool (0.164-274.0)

Overview technical documents/Professional/Spray extraction/PUZZI 300 S (1.101-109.0)/Spare parts list PUZZI 300/60 Floor tool complete/62 Floor tool (0.164-274.0)

ET/VT (spare/wear parts)	Pos	Material #	Name	Qty.	Unit	from ser.nr.	up to ser.nr.	Footnote text
	25	7.306-024.0	Cylinder head screw M6x30 -8.8-A2E ISO4	2.000	ST	00000000000000000000		
X-X	26	7.312-292.0	Washer 6 -A2 ISO 7093-1	2.000	ST	00000000000000000000		
X-X	27	4.310-010.0	Nut right hand thread	1.000	ST	00000000000000000000		
X-X	29	7.343-201.0	Lock washer 6-FST-PHR DIN 6799	1.000	ST	00000000000000000000		
X	30	4.127-009.0	Extension	1.000	ST	00000000000000000000		
	31	5.030-670.0	Moulded part	1.000	ST	00000000000000000000		
X-X	32	6.362-402.0	O-Ring seal 11,0 X 1,3-NBR 70	1.000	ST	00000000000000000000		
	33	5.332-082.0	Helical spring	1.000	ST	00000000000000000000		
X	34	5.584-034.0	Valve pin	1.000	ST	00000000000000000000		
X	35	5.587-139.0	Valve housing	1.000	ST	00000000000000000000		
X	36	6.362-401.0	O-Ring seal 3,1 X 1,6	1.000	ST	00000000000000000000		
X-X	37	5.584-033.0	Valve pin	1.000	ST	00000000000000000000		
X	38	6.390-257.0	Hose clip	2.000	ST	00000000000000000000		
	39	6.390-237.0	Hose PU DN 6x1	1.000	ZST0	00000000000000000000		TO ORDER AS CUT GOODS
X-X	40	4.443-019.0	Hose stem	1.000	ST	00000000000000000000		
	41	6.362-491.0	O-Ring seal 80,0x4,5-NBR 50	1.000	ST	00000000000000000000		
	42	5.031-038.0	Moulded part	1.000	ST	00000000000000000000		
	43	5.481-157.0	Lever	1.000	ST	00000000000000000000		
	44	5.321-569.0	Handhold	1.000	ST	00000000000000000000		
X	46	4.321-101.0	Handhold complete	1.000	ST	00000000000000000000		