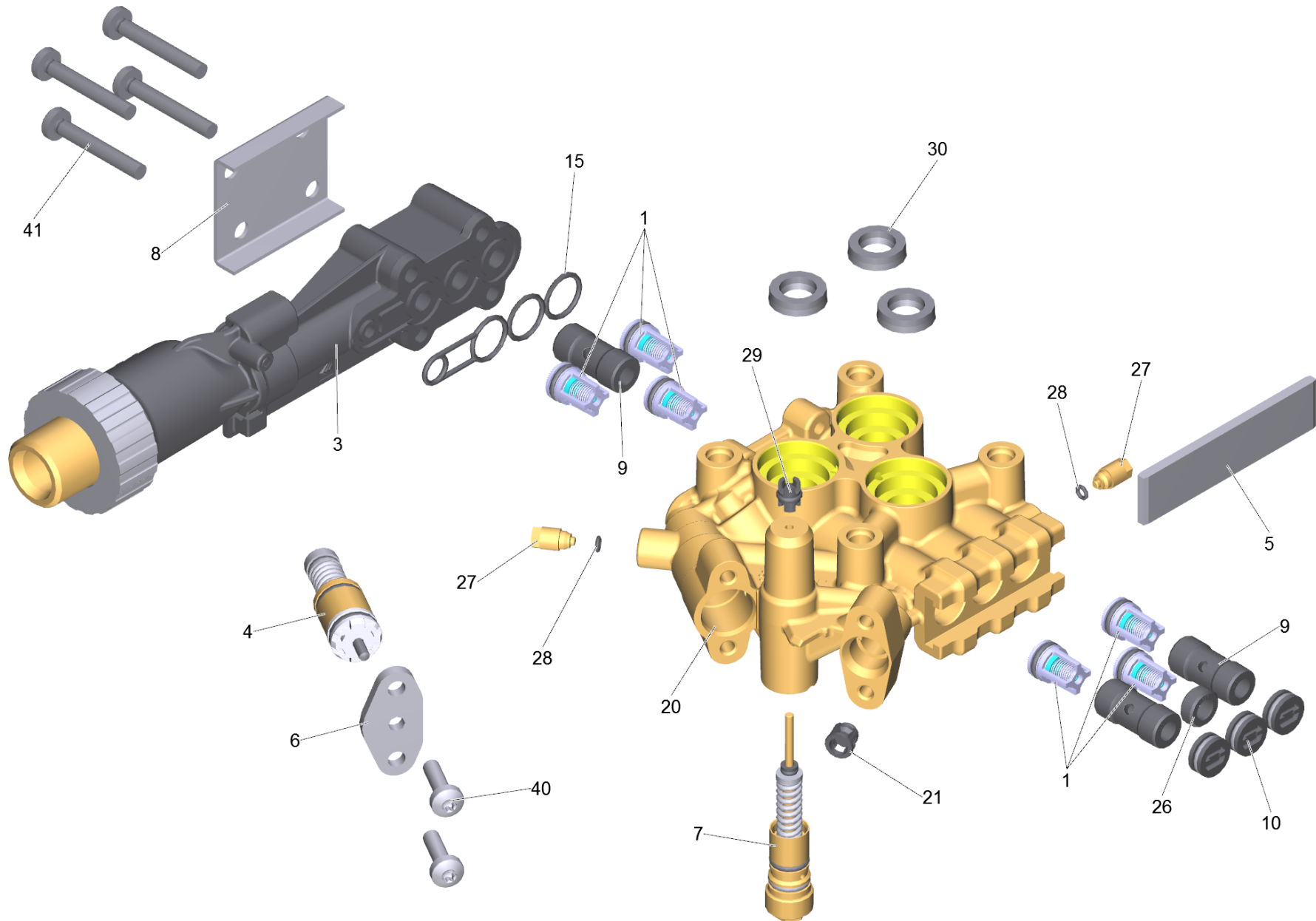


4 Cylinder head complete HD-M TK45 D14

Professional \ High pressure cleaner cold water \ Electric motor \ HD 7/17 M St *EU \ Spare parts list HD 7/17 P Modul \ Unit HD 7/17 M St \ Pump set HD 7/17 M *EU (D128) \ Cylinder head complete HD-M TK45 D14



4 Cylinder head complete HD-M TK45 D14

Professional \ High pressure cleaner cold water \ Electric motor \ HD 7/17 M St *EU \ Spare parts list HD 7/17 P Modul \ Unit HD 7/17 M St \ Pump set HD 7/17 M *EU (D128) \ Cylinder head complete HD-M TK45 D14

KÄRCHER

| POS | Article no. | Description | Quantity | Unit |
|-----|-------------|---|----------|------|
| 7 | 4.580-104.3 | Control piston complete D14 | 1.000 | ST |
| 6 | 5.093-067.0 | Cover plate | 1.000 | ST |
| 20 | 5.550-027.3 | Cylinder head complete for replacement | 1.000 | ST |
| 10 | 4.132-007.0 | Drain plug only for replacement | 3.000 | ST |
| 4 | 4.580-792.3 | Excess-current complete for replacement | 1.000 | ST |
| 30 | 6.365-432.0 | Grooved ring 14x22x5.3 | 3.000 | ST |
| 28 | 6.362-984.0 | O-Ring d. 3 x 1,5 NBR 80 | 2.000 | ST |
| 5 | 5.003-062.0 | Plate | 1.000 | ST |
| 8 | 5.005-314.0 | Plate suction cover | 1.000 | ST |
| 27 | 5.443-024.3 | Plug for replacement | 2.000 | ST |
| 15 | 5.365-284.0 | Profile gasket | 1.000 | ST |
| 40 | 7.306-090.0 | Screw M6x16 -8.8-R3R (In6Rd) | 2.000 | ST |
| 41 | 7.306-129.0 | Screw M6x40 -8.8-R3R (In6Rd) | 4.000 | ST |
| 29 | 5.363-245.3 | Seal control piston for replacement | 1.000 | ST |
| 9 | 5.110-079.0 | Spacer brass D14,5 x 30 | 3.000 | ST |
| 26 | 5.110-050.0 | Spacer D14,5 x 6 | 1.000 | ST |
| 1 | 2.884-916.0 | Valve (3 Stück) | 2.000 | ST |
| 21 | 4.584-022.0 | Valve pin complete | 1.000 | ST |
| 3 | | Water intake complete | 1.000 | ST |