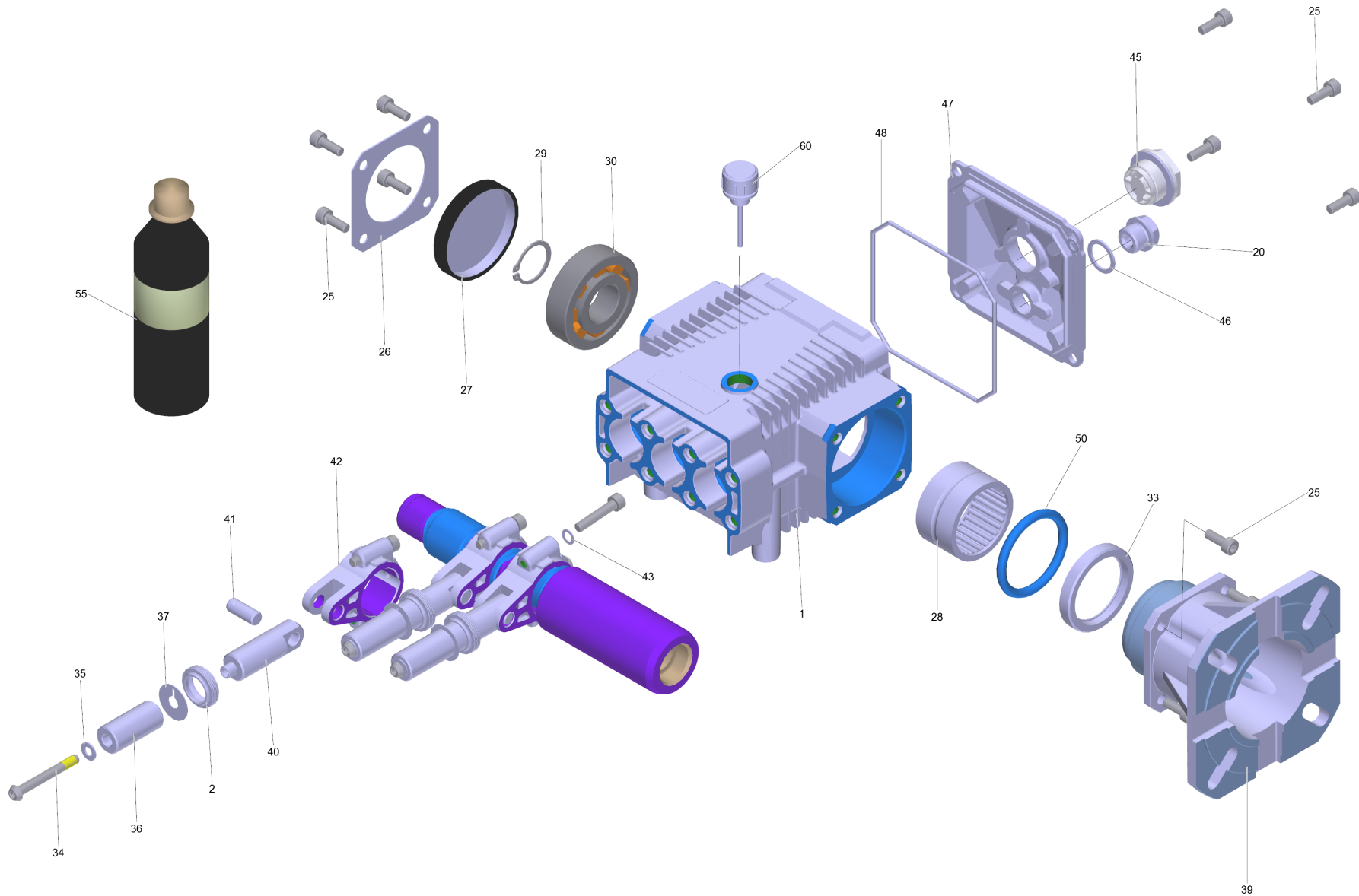


### 3 Pump set only for replacement HD 6/12, 6 (9.751-117.0)

Professional \ High pressure cleaner cold water \ Combustion engine \ HD 6/15 G \*EU \ Spare parts list high-pressure 6/15 G EU \ Pump set only for replacement HD 6/12, 6



### 3 Pump set only for replacement HD 6/12, 6 (9.751-117.0)

Professional \ High pressure cleaner cold water \ Combustion engine \ HD 6/15 G \*EU \ Spare parts list high-pressure 6/15 G EU \ Pump set only for replacement HD 6/12, 6

**KÄRCHER**

POS	Cikkszám	Megnevezés	Quantity	Unit
40	9.761-279.0	Connecting rod	3	DB
27	9.761-118.0	Covering cap bearing	1	DB
47	9.761-120.0	Cover worked	1	DB
25	7.306-272.0	Cylinder head screw M6x16-12.9-A2E ISO	12	DB
20	9.761-057.0	Drain plug G 3/8"	1	DB
39	9.761-360.0	Flange worked Gasoline	1	DB
1	9.761-278.0	Housing worked	1	DB
35	9.761-177.0	Joint ring	3	DB
46	9.761-007.0	Joint ring G 3/8"	1	DB
33	9.761-500.0	Joint ring W 42x55x8	1	DB
29	7.343-008.0	Locking ring 25x1,2-St-vz DIN 471	1	DB
43	9.761-207.0	Lock washer	6	DB
28	9.761-138.0	Needle bearing	1	DB
48	9.761-081.0	O-Ring seal D 2.62x107	1	DB
50	9.761-180.0	O-Ring seal D 55.56x3.55	1	DB
45	9.761-093.0	Oil inspection glass G3/4"	1	DB
60	9.761-022.0	Oil level gauge G 3/8"	1	DB
55	6.288-050.0	olaj, speciális SAE-15/	1	DB
34	9.761-174.0	Pan head screw with Scotchgrip	3	DB
41	9.761-077.0	Pin	3	DB
42	9.751-008.0	Piston rod complete	3	DB
26	9.761-073.0	Plate covering cap	1	DB
30	7.401-353.0	Roller bearing NUP 305-Waelz.St. DIN 541	1	DB
36	9.761-342.0	Sleeve D 15	3	DB
2	6.365-334.0	szimering<6365062 h	3	DB
37	9.761-078.0	Washer D 9.3 x 24	3	DB