

## **Spare parts list**

(1.348-230.0) WD 5 Premium \*EU-I

## Table of contents

---

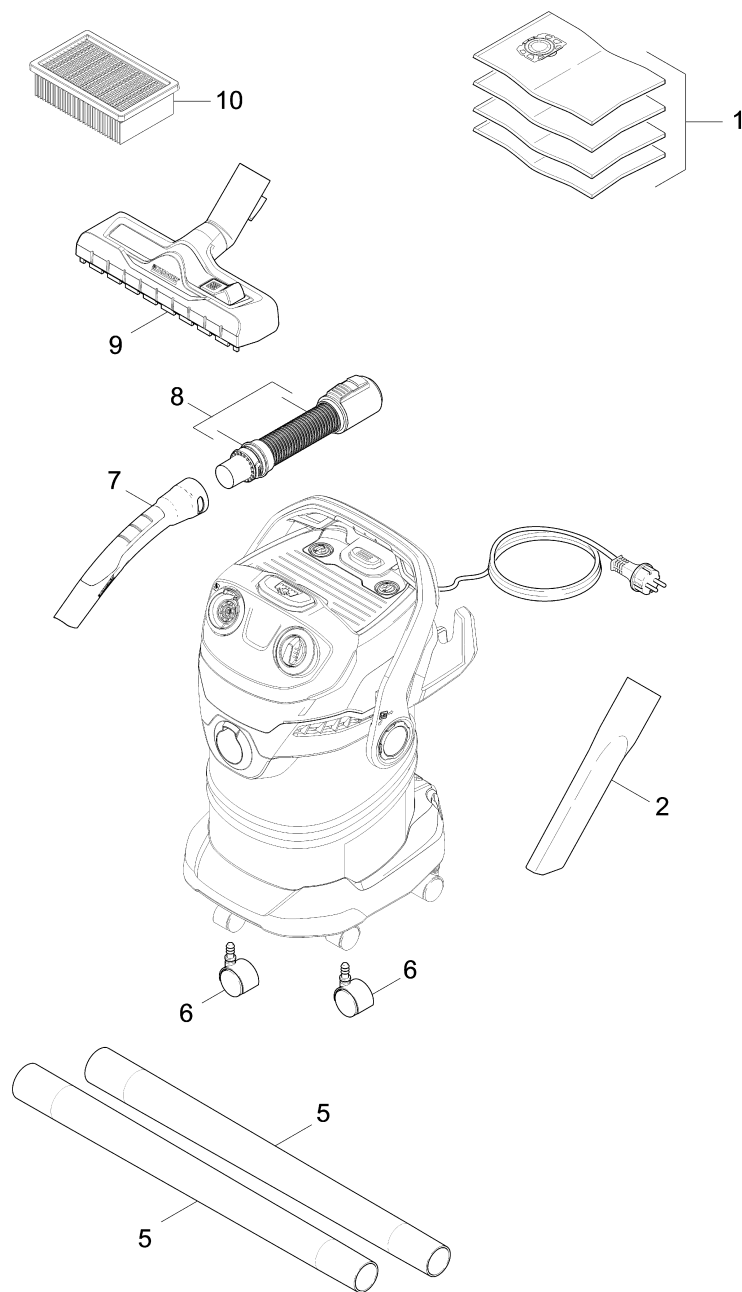
WD 5 Premium *EU-I (1.348-230.0)	3
Short spare parts list	4
Spare parts list MV 5 Premium *EU (5.972-930.0)	6
10 Appliance individual parts	7
20 Tank	9
30 Accessories	11

WD 5 Premium \*EU-I (1.348-230.0)

---

<b>POS</b>	<b>Article no.</b>	<b>Description</b>	<b>Quantity</b>	<b>Unit</b>
0		Short spare parts list	1.000	ST
0	5.972-930.0	Spare parts list MV 5 Premium *EU	1.000	ST

Short spare parts list



## Short spare parts list

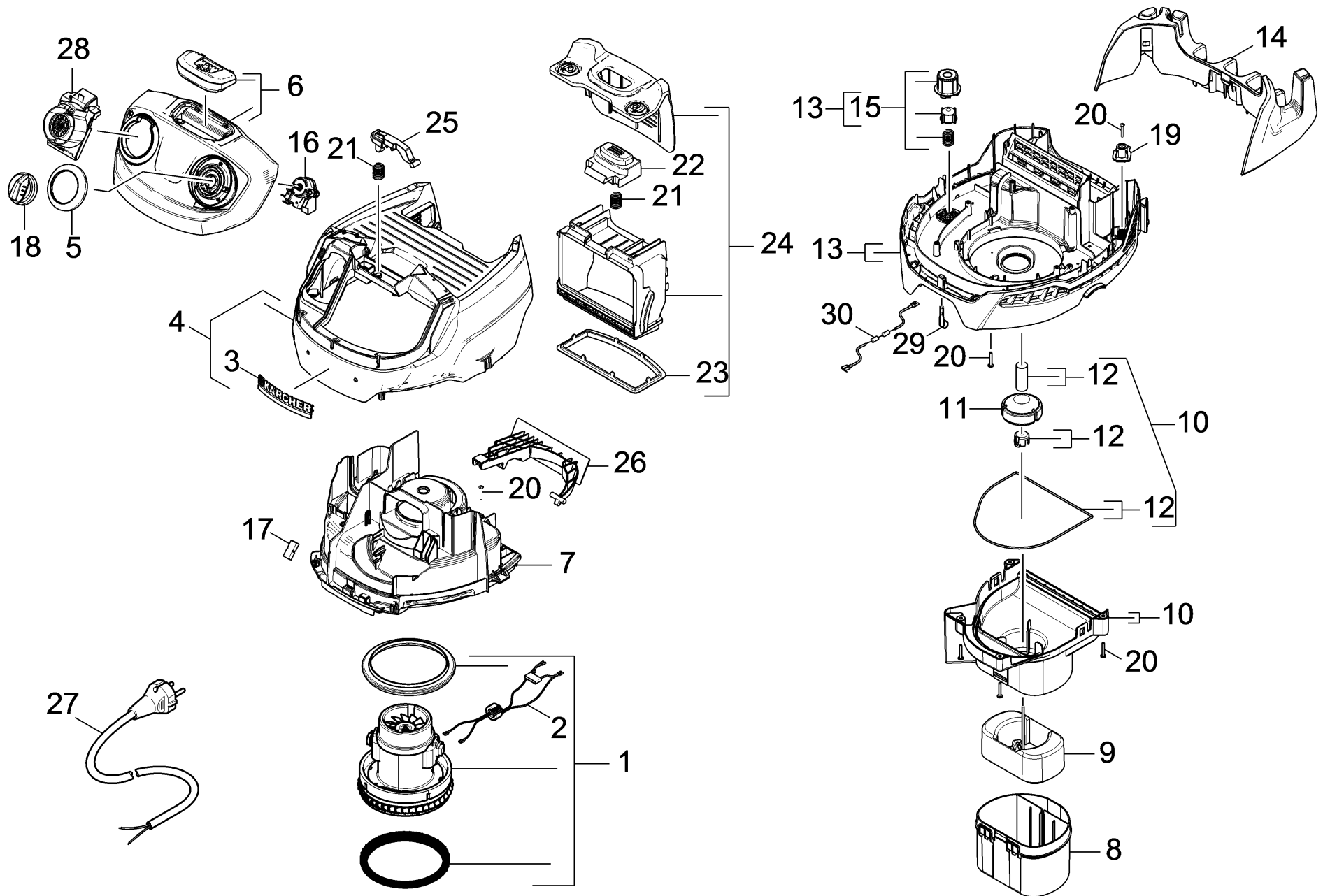
---

<b>POS</b>	<b>Article no.</b>	<b>Description</b>	<b>Quantity</b>	<b>Unit</b>
1	2.863-006.0	Filter bag fleece WD 4pc.	1.000	ST
2	6.900-385.0	Crevice nozzle DN35	1.000	ST
5	2.863-148.0	Extension suction tube WD	2.000	ST
6	9.036-479.0	Castor D50	5.000	ST
7	2.863-012.0	Hand grip suction hose	1.000	ST
8	4.441-091.0	Suction hose complete for replacement	1.000	ST
9	2.863-000.0	Wet and dry nozzle switchable WD/SE	1.000	ST
10	2.863-005.0	Flat-pleated filter WD	1.000	ST

Spare parts list MV 5 Premium \*EU (5.972-930.0)

---

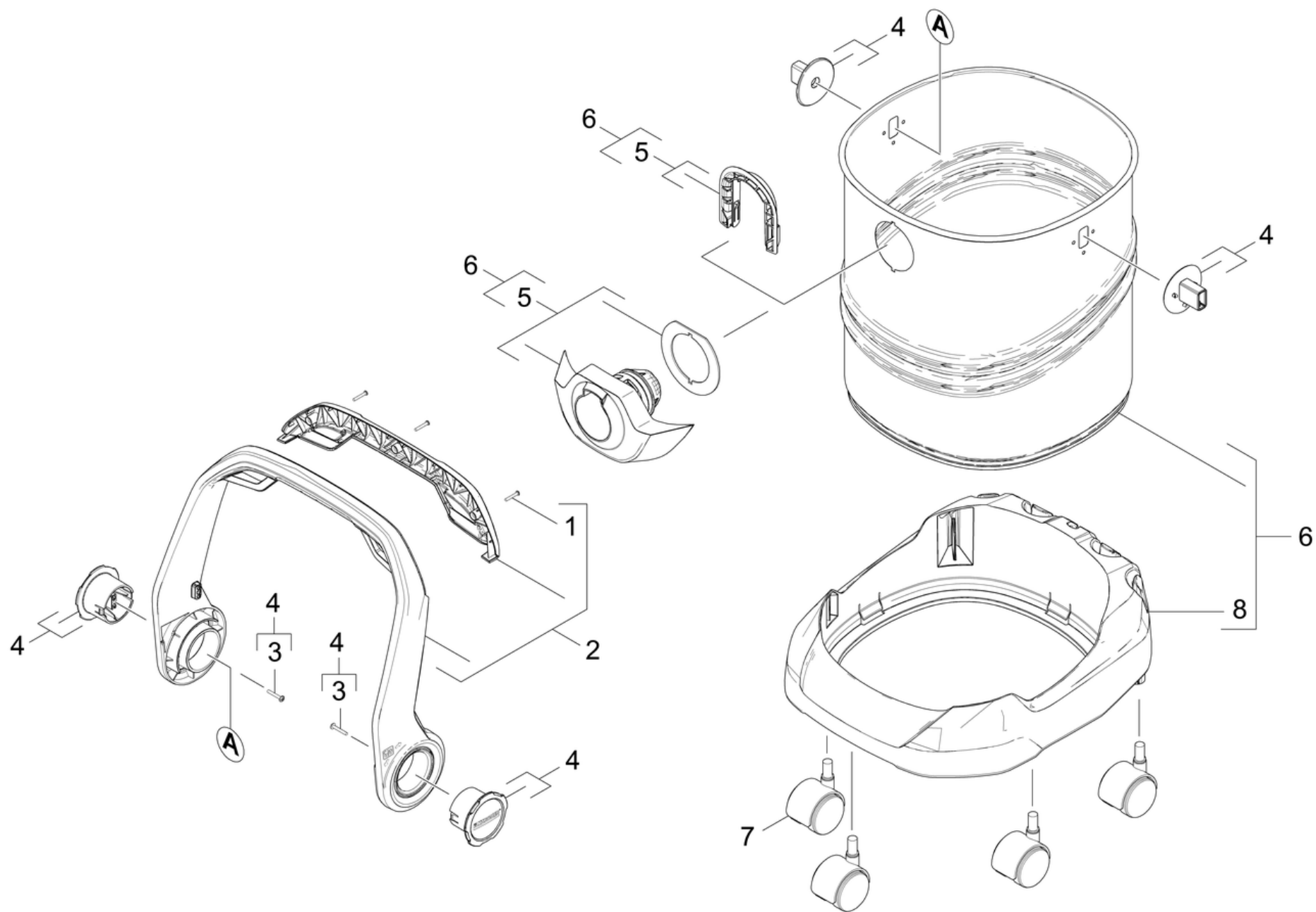
<b>POS</b>	<b>Description</b>	<b>Quantity</b>	<b>Unit</b>
10	Appliance individual parts	1.000	ST
20	Tank	1.000	ST
30	Accessories	1.000	ST



## 10 Appliance individual parts

POS	Article no.	Description	Quantity	Unit	Remark
1	4.490-028.0	Vac motor complete for replacement KCL 1	1.000	ST	
2	2.884-343.0	Set cable ferrite ring	1.000	ST	
3	9.037-643.0	KAERCHER label	1.000	ST	
4	9.002-097.0	Cover neutrally complete	1.000	ST	
5	9.038-359.0	On-Off ring MV5	1.000	ST	
6	9.002-099.0	Front panel complete	1.000	ST	
7	9.038-271.0	Air circulation	1.000	ST	
8	9.038-264.0	Float cage	1.000	ST	
9	9.002-032.0	Float complete WD 4	1.000	ST	
10	9.002-033.0	Cover float complete WD 4	1.000	ST	
11	9.038-070.0	Float valve	1.000	ST	
12	9.002-034.0	Seal float complete WD 4	1.000	ST	
13	9.002-089.0	Motor bracket complete	1.000	ST	
14	9.038-287.0	Retainer accessories	1.000	ST	
15	9.002-036.0	Safety valve complete WD 4	1.000	ST	
16	9.002-098.0	Electrical box small complete	1.000	ST	
17	9.085-094.0	Connection	1.000	ST	
18	9.038-362.0	Rotary switch WD	1.000	ST	
19	9.036-997.0	Strain relief	1.000	ST	
20	6.303-150.0	Screw 4,2x 22	14.000	ST	
21	9.047-111.0	Spring WD	2.000	ST	
22	9.038-283.0	Fbox button WD5	1.000	ST	
23	9.079-080.0	Fbox Sealing	1.000	ST	
24	9.002-091.0	Filter box complete	1.000	ST	
25	9.038-278.0	Lever spring	1.000	ST	
26	9.038-279.0	Flap filter	1.000	ST	
27	9.084-301.0	Cable 5,5m 2x0,75 *CH	1.000	ST	*CH
27	9.084-159.0	Cable H05V-F 2X0,75 A2204 *GB	1.000	ST	*GB *AE
27	9.084-154.0	Cable H05V-F 2X0,75 A2204 *EU	1.000	ST	*EU
28	9.013-059.0	Connection complete	1.000	ST	
29	9.047-057.0	Spring ESD	1.000	ST	
30	9.084-172.0	Cable set ESD	1.000	ST	

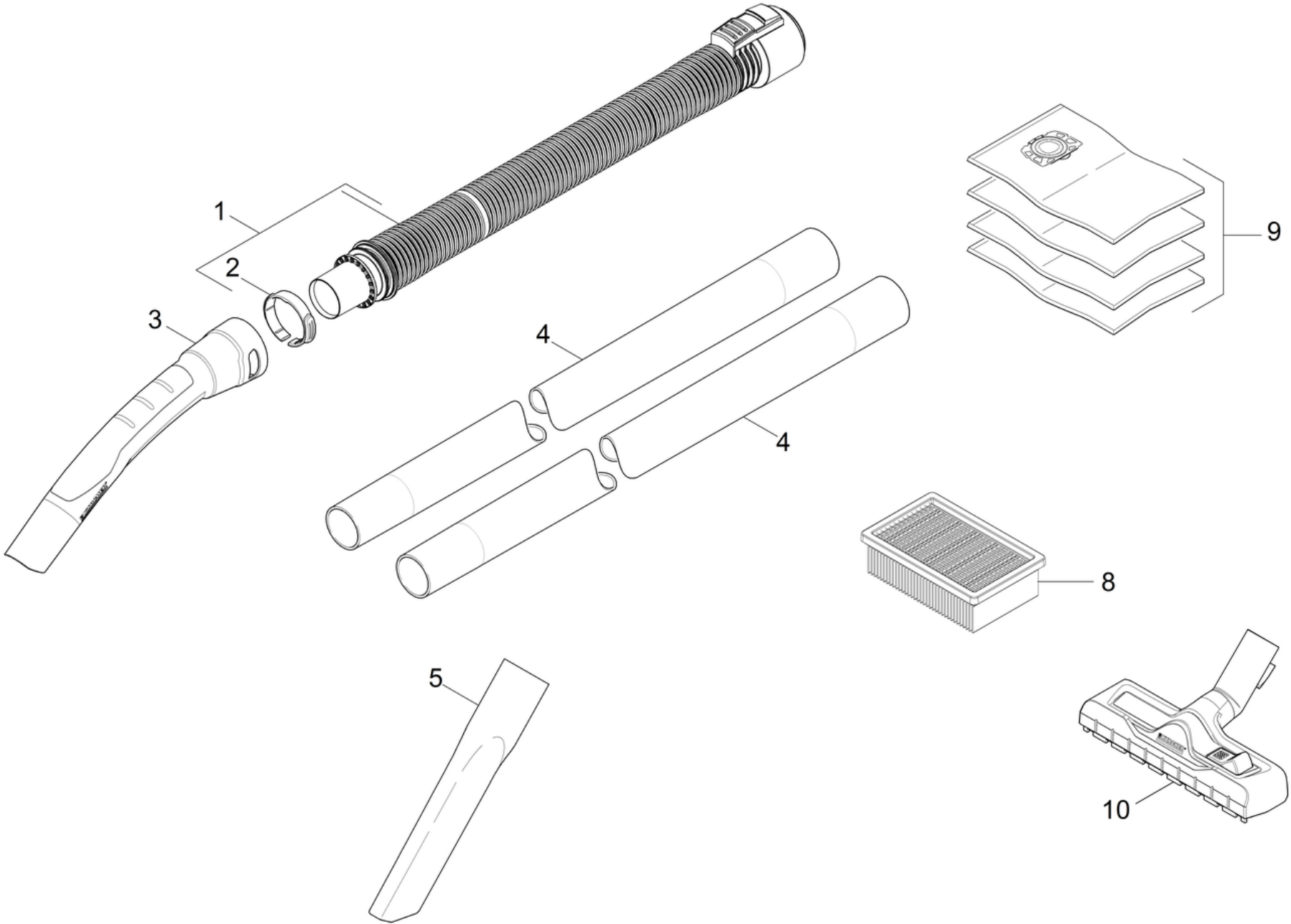




## 20 Tank

---

<b>POS</b>	<b>Article no.</b>	<b>Description</b>	<b>Quantity</b>	<b>Unit</b>
1	9.086-184.0	Screw 3x20	3.000	ST
2	9.002-093.0	Handle complete	1.000	ST
3	6.303-150.0	Screw 4,2x 22	2.000	ST
4	9.002-094.0	Flange hand grip complete	1.000	ST
5	9.002-040.0	Hose connection PP complete	1.000	ST
6	9.002-092.0	Container 25L Me complete	1.000	ST
7	9.036-479.0	Castor D50	5.000	ST
8	9.002-100.0	Bumper packaged for replacement	1.000	ST



## 30 Accessories

---

<b>POS</b>	<b>Article no.</b>	<b>Description</b>	<b>Quantity</b>	<b>Unit</b>
1	4.441-091.0	Suction hose complete for replacement	1.000	ST
2	6.645-688.0	Spring washer suction hose	1.000	ST
3	2.863-012.0	Hand grip suction hose	1.000	ST
4	2.863-148.0	Extension suction tube WD	2.000	ST
5	6.900-385.0	Crevice nozzle DN35	1.000	ST
8	2.863-005.0	Flat-pleated filter WD	1.000	ST
9	2.863-006.0	Filter bag fleece WD 4pc.	1.000	ST
10	2.863-000.0	Wet and dry nozzle switchable WD/SE	1.000	ST