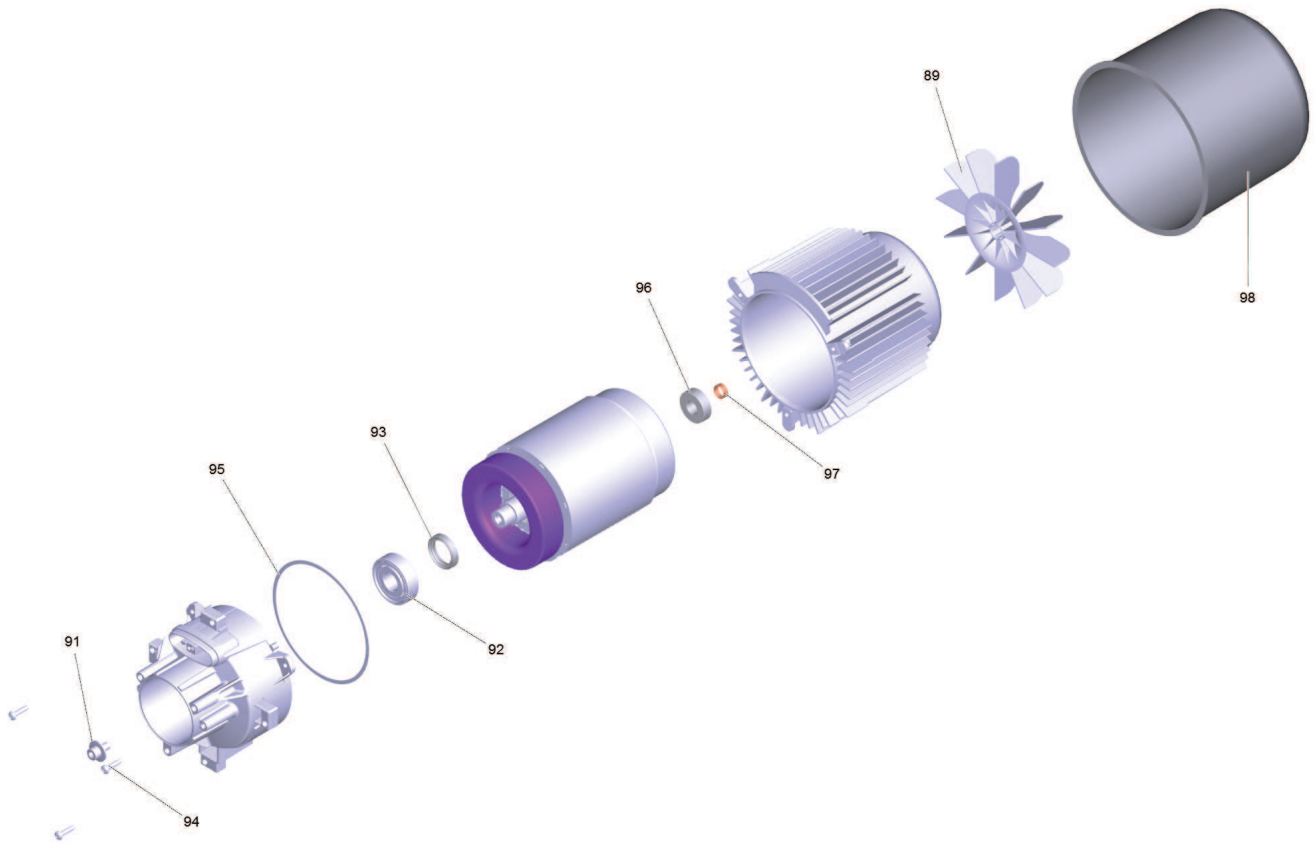


999 Motor for replacement HD 5/17 (4.624-227.0)

Professional \ High pressure cleaner cold water \ Electric motor \ HD 5/17 C Plus *EU \ Spare parts list high-pressure 5/17 C PL \ Pump set complete HD 5/17 \ Transmission HD 5/17 \ Motor for replacement HD 5/17

KÄRCHER



999 Motor for replacement HD 5/17 (4.624-227.0)

Professional \ High pressure cleaner cold water \ Electric motor \ HD 5/17 C Plus *EU \ Spare parts list high-pressure 5/17 C PL \ Pump set complete HD 5/17 \ Transmission HD 5/17 \ Motor for replacement HD 5/17

KÄRCHER

POS	Article no.	Description	Quantity	Unit
98	5.692-102.0	Air circulation	1.000	ST
92	6.401-427.0	Angular contact ball bearing	1.000	ST
96	7.401-128.0	Ball bearing 6202-2RS -Wälzl.St DIN 625	1.000	ST
89	5.600-105.0	Blower wheel	1.000	ST
95	5.363-743.0	Joint ring	1.000	ST
93	7.367-024.0	Radial shaft seal ring A26x37x7 -FKM DIN	1.000	ST
94	6.303-320.0	Screw M 5x 20-St-R2R	3.000	ST
97	6.343-218.0	Tolerance ring 15x6	1.000	ST
91	9.086-169.0	Wobble plate screw M8x16	1.000	ST