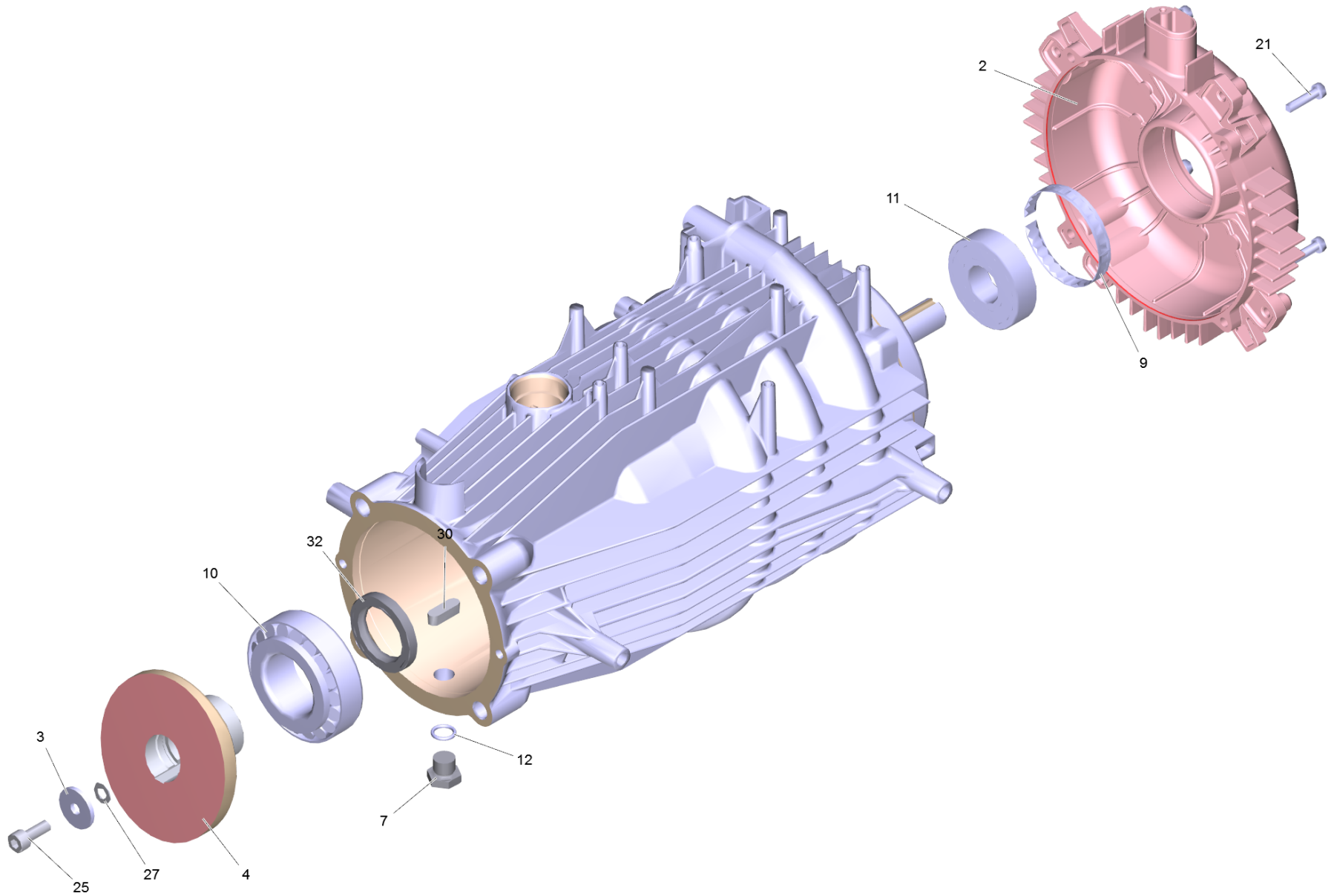


# 903 Motor complete only for replacement (4.623-921.0)

Professional \ High pressure cleaner hotwater \ Electric motor \ HDS 13/20-4 SX \*EU-I \ Spare parts list HDS 13/20-4SX \*EU-I \ Motor pump \ Motor complete only for replacement



## 903 Motor complete only for replacement (4.623-921.0)

Professional \ High pressure cleaner hotwater \ Electric motor \ HDS 13/20-4 SX \*EU-I \ Spare parts list HDS 13/20-4SX \*EU-I \ Motor pump \ Motor complete only for replacement

**KÄRCHER**

POS	Article no.	Description	Quantity	Unit
11	6.401-253.0	Ball bearing 6305-2Z	1.000	ST
2	5.064-006.0	Bearing cover B	1.000	ST
25	7.306-041.0	Cylinder head screw M8x20 -8.8-A2E ISO	1.000	ST
12	6.362-028.0	O-Ring seal 11x2,2 NBR 70	1.000	ST
30	7.318-035.0	Parallel key 8x7x25 -C45K DIN 6885-1	1.000	ST
6		Piece of tube	2.000	ST
32	7.367-009.0	Radial shaft seal ring A35x52x7-NBR DIN	1.000	ST
7	5.411-100.0	Screw plug	1.000	ST
21	6.303-515.0	Self-tapping screw M6x25	4.000	ST
10	6.401-225.3	Taper roller bearing 41	1.000	ST
9	6.343-010.0	Tolerance ring 62x10	1.000	ST
27	7.312-159.0	Toothed lock washer A8,4-FST-PH DIN 679	1.000	ST
3	5.115-565.0	Washer	1.000	ST
4	5.120-353.3	Wobble plate	1.000	ST