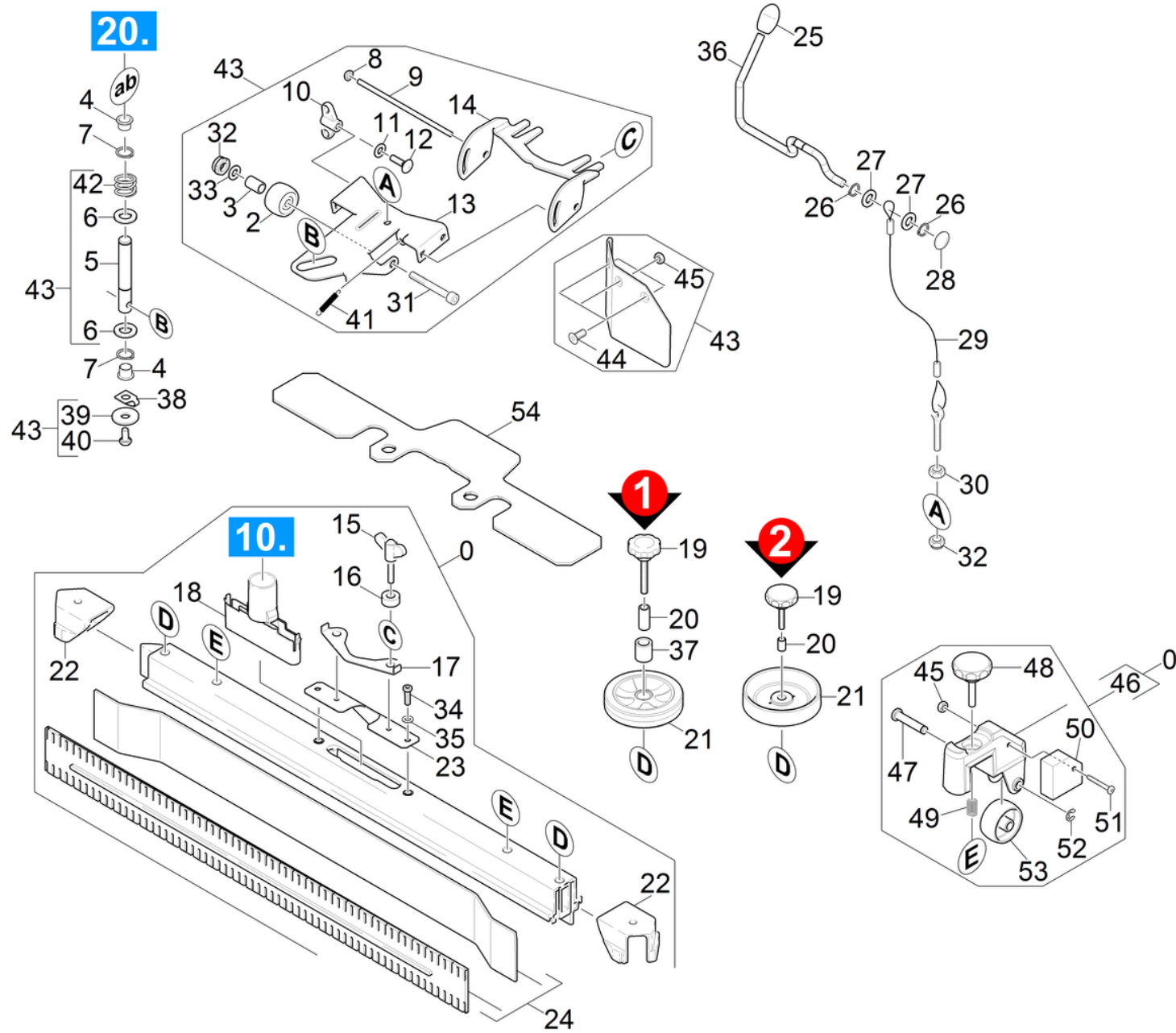


63 Suction bar

Professional \ Floor cleaner \ Walk behind \ BD 40/25 C Bp *EU \ Spare parts list BR/BD 40/25 C \ Suction mechanism \ Suction bar



63 Suction bar

Professional \ Floor cleaner \ Walk behind \ BD 40/25 C Bp *EU \ Spare parts list BR/BD 40/25 C \ Suction mechanism \ Suction bar



POS	Article no.	Description	Quantity	Unit	Foot note text
0	4.777-300.0	Suction bar 770AB oLR	1	PC	
0	4.777-407.0	Suction bar straight 770mm	1	PC	
2	5.435-004.0	Roller D40	1	PC	
3	5.112-865.0	Spacer sleeve suction bar right	1	PC	
4	6.437-484.0	Bearing bush	2	PC	
5	5.317-357.0	Bolt suction bar BR/BD 40/25	1	PC	
6	7.312-057.0	Washer 16 -A2 ISO 7089	4	PC	
7	7.343-306.0	Lock washer 12-St-A2E DIN 6799	1	PC	
8	6.343-132.0	Lock washer 8	2	PC	
9	5.107-202.0	Bar	1	PC	
10	6.310-180.0	Wing nut M6	1	PC	
11	7.312-292.0	Washer 6 -A2 ISO 7093-1	1	PC	
12	7.303-139.0	Saucer-head screw M6x20 -A2 DIN 603	1	PC	
13	5.044-904.0	Holder suction bar long hole	1	PC	
14	5.058-987.0	Rocker suction bar	1	PC	
15	5.305-296.0	Wing screw M8x40 VA	2	PC	
17	5.007-217.0	Plate	1	PC	
18	5.033-601.0	Suction nipple	1	PC	
19	6.321-239.0	Star grip VA Ø50x43	2	PC	
19	6.321-243.0	Star grip stainless steel D50x48	2	PC	
20	5.094-231.0	Sleeve suction bar in VA	2	PC	
20	5.094-404.0	Spacer sleeve inside	2	PC	
21	5.515-346.0	Deflector roll suction bar D120	2	PC	VERSION 2
21	5.515-366.0	Wheel D121	2	PC	VERSION 1
22	2.885-294.0	End piece left / right spare parts set	1	PC	
23	5.100-559.0	Suction bar support plate	1	PC	
24	6.273-262.0	Rubber lip set anti stripe oil resistant	1	ZSA	
24	6.273-353.0	Rubber lip set standard	1	SET	
24	6.273-354.0	Rubber lip set oil resistant	1	SET	
25	6.321-185.0	Push button	1	PC	
26	7.343-205.0	Lock washer 9-St-A2E DIN 6799	2	PC	
27	7.312-005.0	Washer 10-200HV-A3E ISO 7089	2	PC	
28	6.343-191.0	Quick-fastener	1	PC	

63 Suction bar

Professional \ Floor cleaner \ Walk behind \ BD 40/25 C Bp *EU \ Spare parts list BR/BD 40/25 C \ Suction mechanism \ Suction bar

KÄRCHER

POS	Article no.	Description	Quantity	Unit	Foot note text
29	4.172-024.0	Rope complete	1	PC	
30	7.311-224.0	Hexagon nut M 8-04-A2E ISO 4035	1	PC	
31	7.306-012.0	Cylinder head screw M10x90-A4-70 DIN 91	2	PC	
32	7.311-441.0	Hexagon nut M10-1.4305 DIN 985	3	PC	
33	7.312-066.0	Washer 10 -A2 ISO 7089	2	PC	
34	7.306-142.0	Cylinder head screw M 8x25-A4-70 ISO 47	2	PC	
35	7.312-017.0	Washer 8-A2 ISO 7089	2	PC	
36	5.034-735.0	Retaining bracket suction bar	1	PC	
37	5.094-405.0	Spacer sleeve external	2	PC	
38	5.001-987.0	Plate bracket fuer Kette	1	PC	
39	7.312-269.0	Washer 10-A2 ISO 7094	1	PC	
40	7.304-546.0	Hexagonal head screw M 8x12-A2-70 ISO 4	1	PC	
41	6.330-448.0	Extension spring	1	PC	
42	5.332-349.0	Pressure spring	1	PC	
43	2.882-673.0	Conversion kit suction beam retraction s	1	PC	
44	7.305-050.0	Countersunk screw M5x20 -A2-70-s (In6Rd	3	PC	
45	7.311-431.0	Hexagon nut M 5-1.4305 DIN 985	3	PC	
46	4.035-339.0	Roller suction bar	2	PC	
47	5.317-781.0	Bolt roller	2	PC	
48	6.321-240.0	Star grip with inscription VA Ø50x43	2	PC	
49	5.332-504.0	Pressure spring	2	PC	
50	7.777-999.0	Stockpiling discontinued	2	PC	
51	7.306-185.0	Screw M5x 35-A2-70 (IN6RD)	2	PC	
52	7.343-303.0	Locking ring 8-A2 DIN 6799	2	PC	
53	6.435-401.0	Wheel D54	2	PC	
54	5.128-339.0	Additional weight suction bar	1	PC	