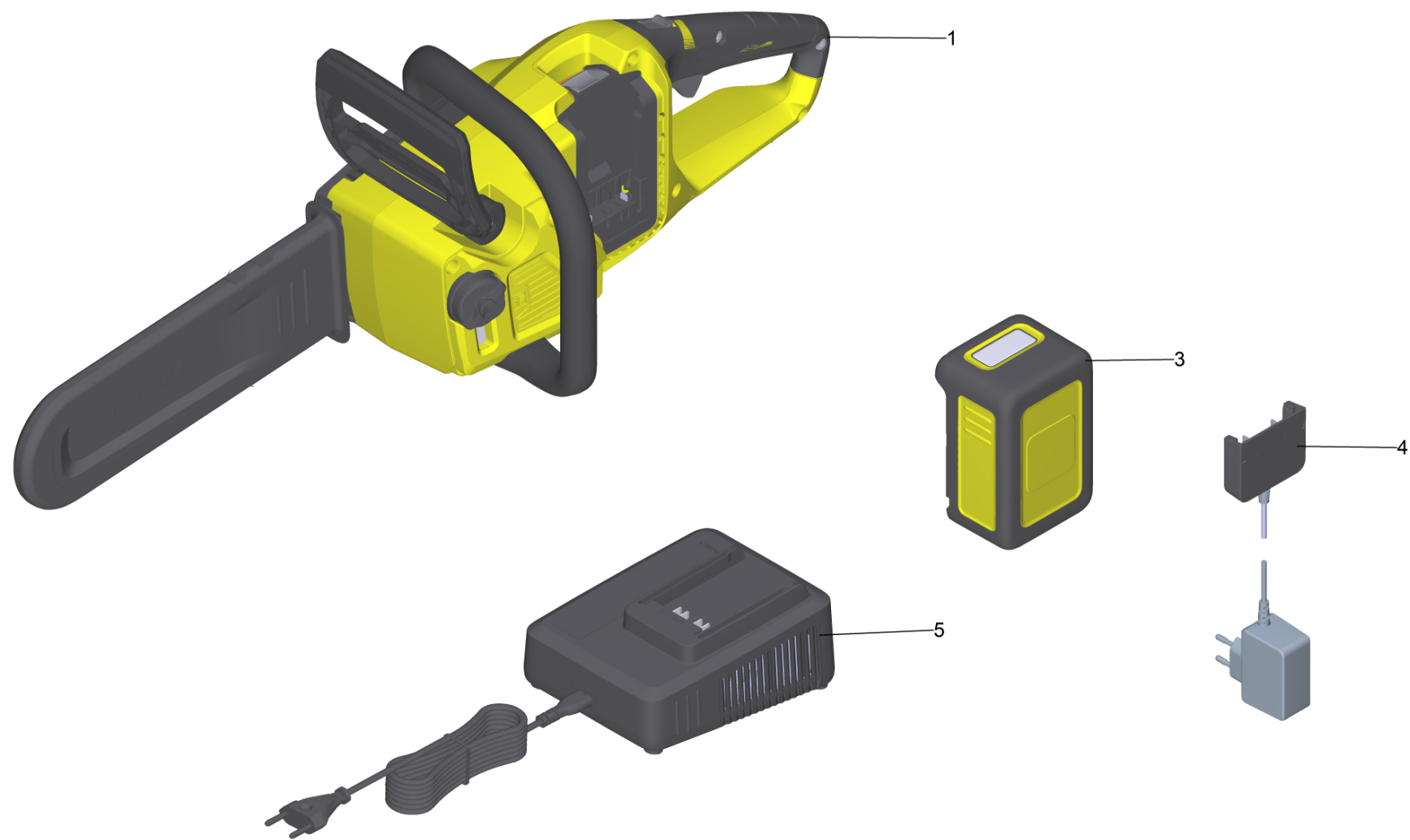


Spare parts list

(1.444-001.0) CNS 18-30 Battery *INT

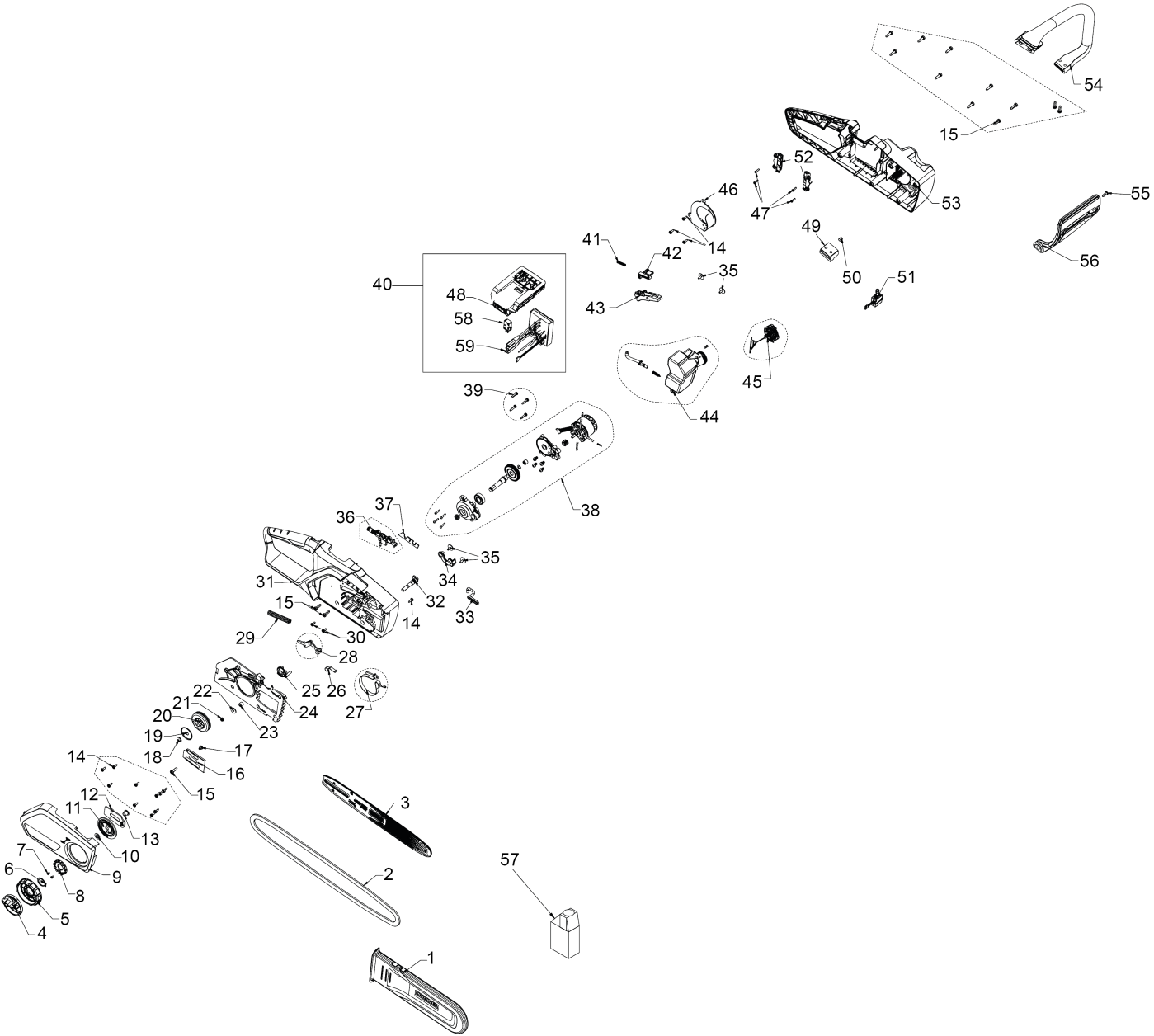
Table of contents

CNS 18-30 Battery *INT (1.444-001.0)	3
1 CNS Battery 18-30 *INT	5



CNS 18-30 Battery *INT (1.444-001.0)

POS	Article no.	Description	Quantity	Unit	Remark
1		CNS Battery 18-30 *INT	1	PC	
3	2.445-035.0	Battery Power 18/50 DW *INT	1	PC	18V/5,0Ah
4	6.445-050.3	Plug-in charger packaged 18/5 *EU	1	PC	*EU
4	6.445-052.3	Plug-in charger packaged 18/5 *GB	1	PC	*GB
4	6.445-054.3	Plug-in charger Battery Power 18/5 *JP	1	PC	*JP
4	6.445-056.3	Plug-in charger Battery Power 18/5 *AU	1	PC	*AU
5	2.445-052.0	Battery charger Battery Power+ 18/60 *CUL	1	PC	18V/6,0A *US
5	2.445-050.0	Battery charger Battery Power+ 18/60 *AU	1	PC	18V/6,0A *AU
5	2.445-048.0	Battery charger Battery Power+ 18/60 *JP	1	PC	18V/6,0A *JP
5	2.445-046.0	Battery charger Battery Power+ 18/60 *GB	1	PC	18V/6,0A *GB
5	2.445-044.0	Battery charger Battery Power+ 18/60 *EU	1	PC	18V/6,0A *EU
7	2.445-054.0	Uni-Charger Battery Power+ 18-36/60 *EU	1	PC	18-36V/2,5-6A *EU
7	2.445-055.0	Uni-Charger Battery Power+ 18-36/60 *GB	1	PC	18-36V/2,5-6A *GB
7	2.445-056.0	Uni-Charger Battery Power+ 18-36/60 *JP	1	PC	18-36V/2,5-6A *JP
7	2.445-057.0	Uni-Charger Battery Power+ 18-36/60 *AU	1	PC	18-36V/2,5-6A *AU
7	2.445-058.0	Uni-Charger Battery Power+ 18-36/60 *CUL	1	PC	18-36V/2,5-6A *US
1011		Flyer battery platform 2020	1	PC	





60



70



80



90



100

1 CNS Battery 18-30 *INT

POS	Article no.	Description	Quantity	Unit
1	6.444-258.0	Cover blade 18-30 CNS	1	PC
2	2.444-019.0	Chain CNS 18-30 Battery	1	PC
3	6.444-266.0	Saw blade 18-30 CNS	1	PC
4	6.444-814.0	Adjusting knob chain tightener	1	PC
5	6.444-815.0	Ring Support	1	PC
6	6.444-816.0	Locking ring	1	PC
7	6.444-817.0	Screw	2	PC
8	6.444-818.0	Gear wheel chain tightener	1	PC
9	5.444-167.0	Protective cover 18-30 CNS	1	PC
10	6.444-819.0	Washer	1	PC
11	6.444-820.0	Slider chain tightener	1	PC
12	6.444-821.0	Mounting plate chain tightener	1	PC
13	6.444-822.0	Bush	1	PC
14	6.444-510.0	Screw M4x12	12	PC
15	6.444-575.0	Screw	13	PC
16	6.444-823.0	Guide plate	1	PC
17	6.444-824.0	Screw	1	PC
18	6.444-545.0	Locking ring	1	PC
19	6.444-546.0	Washer	1	PC
20	6.444-825.0	Coupler	1	PC
21	6.444-826.0	Nut	1	PC
22	6.444-827.0	Washer	1	PC
23	6.444-568.0	Spacer sleeve	1	PC
24	6.444-828.0	Covering cap brake	1	PC
25	6.444-829.0	Rotor protection	1	PC
26	6.444-569.0	Spring	1	PC
27	6.444-830.0	Strap brake	1	PC
28	6.444-831.0	Brake lever	1	PC
29	6.444-832.0	Spring	1	PC
30	6.444-550.0	Screw M4X1.411 PH TORX T20 B	2	PC
31	5.444-165.0	Housing right 18-30 CNS	1	PC
32	6.444-833.0	Screw	1	PC
33	6.444-556.0	Oil drain hose	1	PC

1 CNS Battery 18-30 *INT

POS	Article no.	Description	Quantity	Unit
34	6.444-834.0	Switch housing brake	1	PC
35	6.444-835.0	Screw	4	PC
36	6.444-551.0	Oil pump	1	PC
37	6.444-836.0	Rubber	1	PC
38	6.444-837.0	Gear motor	1	PC
39	6.444-575.0	Screw	13	PC
40	6.444-901.0	Set battery technology	1	PC
41	6.444-559.0	Spring	1	PC
42	6.444-838.0	Slider security	1	PC
43	6.444-900.0	Lever	1	PC
44	6.444-839.0	Oil tank	1	PC
45	6.444-257.0	Cap oil CNS	1	PC
46	6.444-840.0	Connecting element	1	PC
47	6.444-557.0	Screw	14	PC
49	6.444-841.0	Vibration damper	1	PC
50	6.444-873.0	Filter	1	PC
51	6.444-842.0	Switch signals	1	PC
52	6.444-562.0	Adapter	2	PC
53	5.444-166.0	Housing left 18-36 CNS	1	PC
54	6.444-843.0	Hand grip	1	PC
55	6.444-572.0	Screw	1	PC
56	6.444-844.0	Handhold security above	1	PC
57	6.990-531.0	Bio saw chain oil Planto Tac 68	1	PC
58	6.445-133.0	Micro switch	1	PC
59	6.445-134.0	Electronics	1	PC
60	5.444-222.0	Label Noise 101 dB	1	PC
70	5.444-174.0	Label Battery Power 18V CNS	1	PC
80	5.444-132.0	Label safety information 18-30 CNS	1	PC
90	5.444-157.0	Label instruction Chainsaw	1	PC
100	5.444-129.0	Label with Kaercher logo 18-30 CNS	1	PC