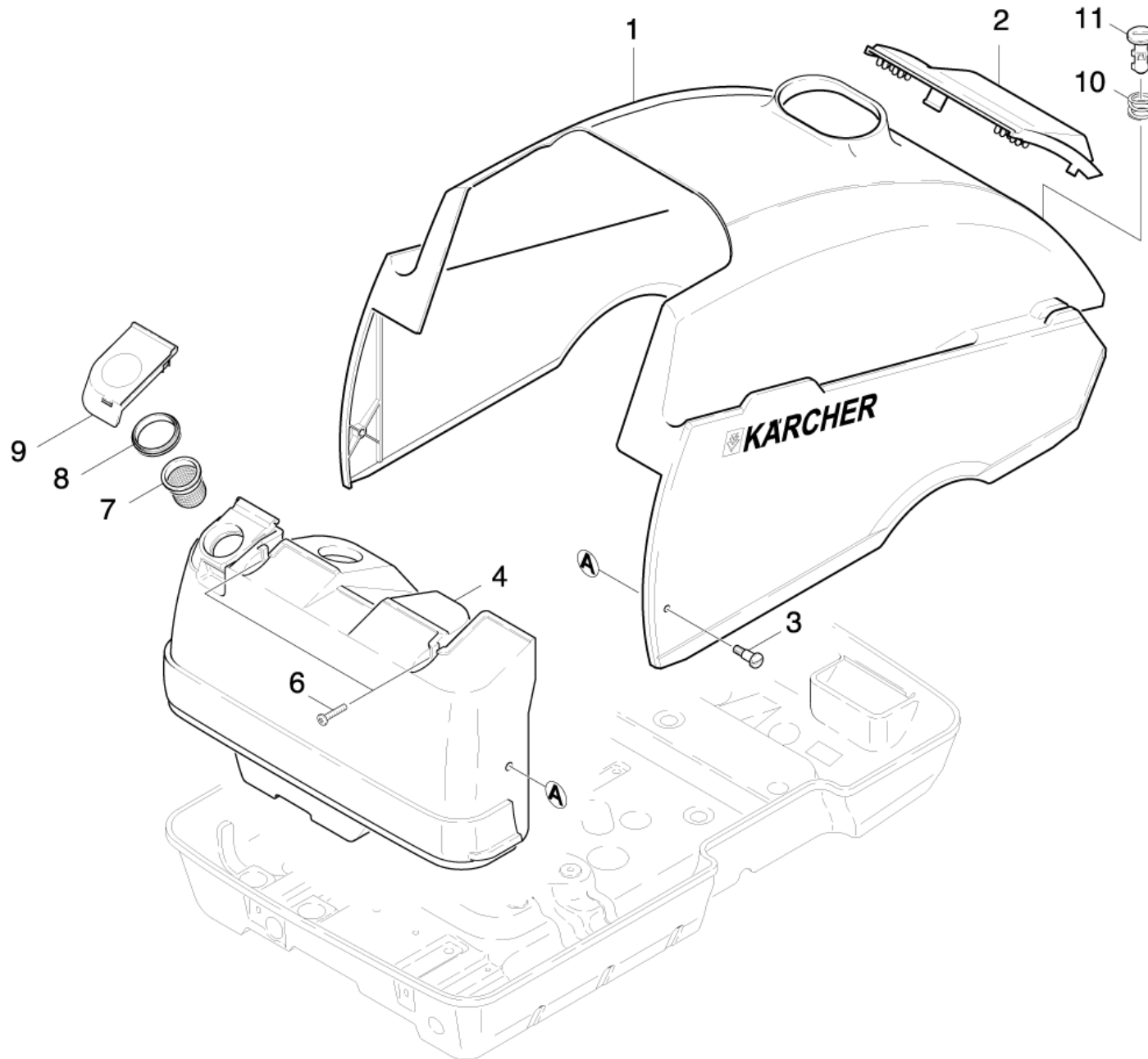


# 11 Cover

Professional \ High pressure cleaner hotwater \ Electric motor \ HDS 695 M ECO\*EU-II \ Spare parts list HDS 695 M ECO \ Individual parts \ Cover



# 11 Cover

Professional \ High pressure cleaner hotwater \ Electric motor \ HDS 695 M ECO\*EU-II \ Spare parts list HDS 695 M ECO \ Individual parts \ Cover



POS	Article no.	Description	Quantity	Unit	Foot note text
1	4.066-384.0	Cover Ersatz-alte HDS-M nieder o. Blech	1.000	ST	
	<b>Item text1:</b> 1.025-351.0				
1	4.066-385.0	Cover Ersatz alte HDS-M klasse mit VA-B	1.000	ST	
	<b>Item text1:</b> 1.025-311.0 /-312.0 /-315.0 /-316.0 / -317.0 /-318.0 /-319.0 /-320.0 /-324.0 / -325.0 /				
1	4.066-384.0	Cover Ersatz-alte HDS-M nieder o. Blech	1.000	ST	
	<b>Item text1:</b> 1.025-352.0				
2	5.033-769.0	Flap anthracite	1.000	ST	
	<b>Item text1:</b> 1.025-352.0				
2	5.030-001.0	Flap	1.000	ST	ANTHRACITE
2	5.030-834.0	Flap	1.000	ST	YELLOW
	<b>Item text1:</b> 1.025-311.0 /-312.0 /-315.0 /-316.0 /-317.0 /-318.0 /-319.0 /-320.0 /-324.0 /-325.0 /-351.0				
3	5.305-204.0	Shaped screw	2.000	ST	
4	5.071-048.0	Tank fuel	1.000	ST	
6	6.303-172.0	Oval head screw M 6X 34	2.000	ST	
7	5.731-039.0	Filter	1.000	ST	
8	5.363-290.0	Joint ring	1.000	ST	
9	5.063-958.0	Cover	1.000	ST	
	<b>Item text1:</b> / 1.025-318.0 / -319.0 / -320.0				
	<b>Item text2:</b> / -324.0				
9	5.063-957.0	Cover	1.000	ST	
	<b>Item text1:</b> / 1.025-311.0 /-312.0 /-315.0 /-316.0				
	<b>Item text2:</b> /-317.0 /-325.0 /-351.0 /-352.0				
10	5.332-236.0	Helical spring	1.000	ST	
11	5.316-318.0	Bolt	1.000	ST	