

Spare parts list

(1.629-760.0) WD 2 *EU-I

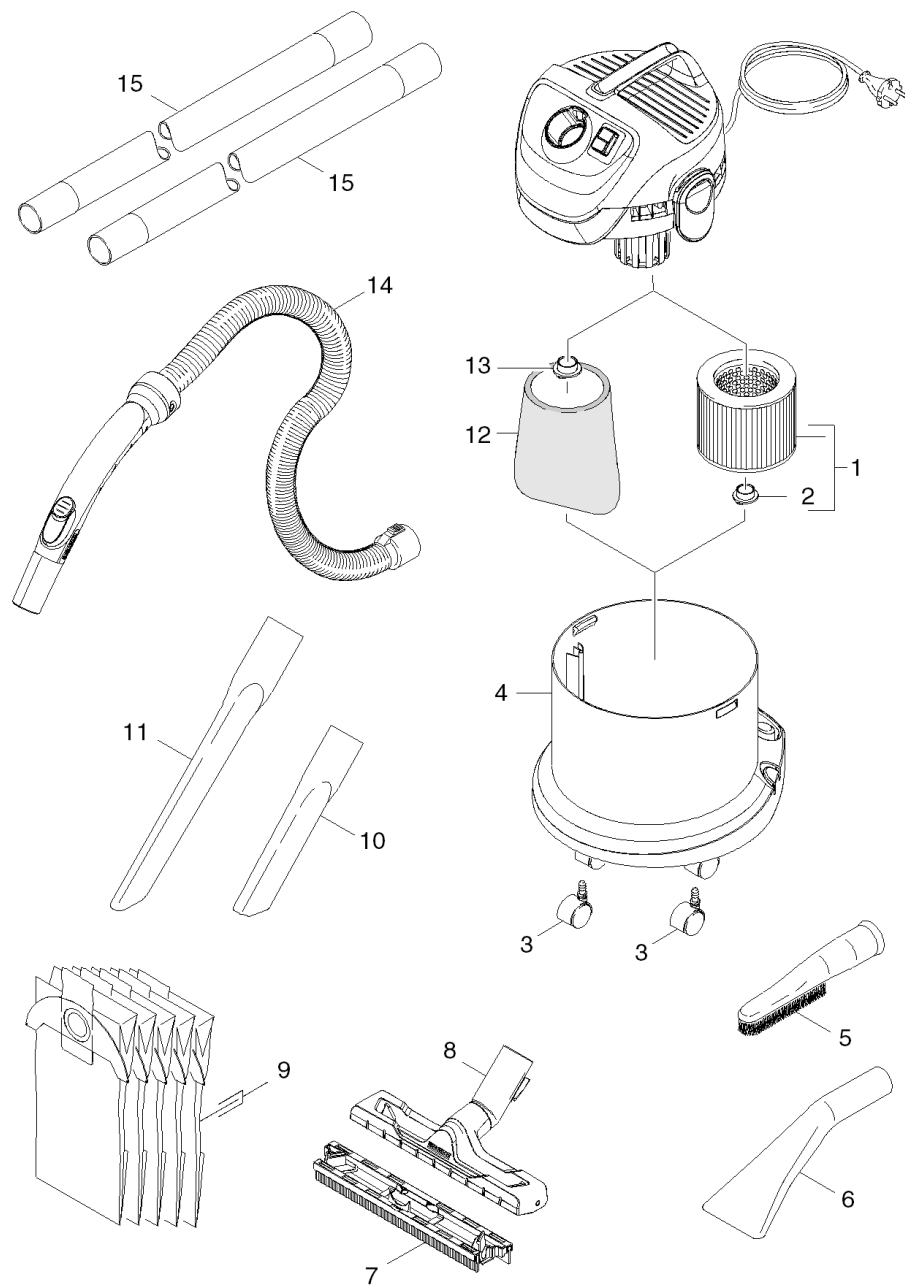
Table of contents

WD 2 *EU-I (1.629-760.0)	3
Short spare parts list	4
Spare parts list MV 2 *EU I (5.972-694.0)	6
10 Appliance individual parts	7
20 Tank	9
30 Accessories	11

WD 2 *EU-I (1.629-760.0)

POS	Article no.	Description	Quantity	Unit
0		Short spare parts list	1.000	ST
0	5.972-694.0	Spare parts list MV 2 *EU I	1.000	ST

Short spare parts list

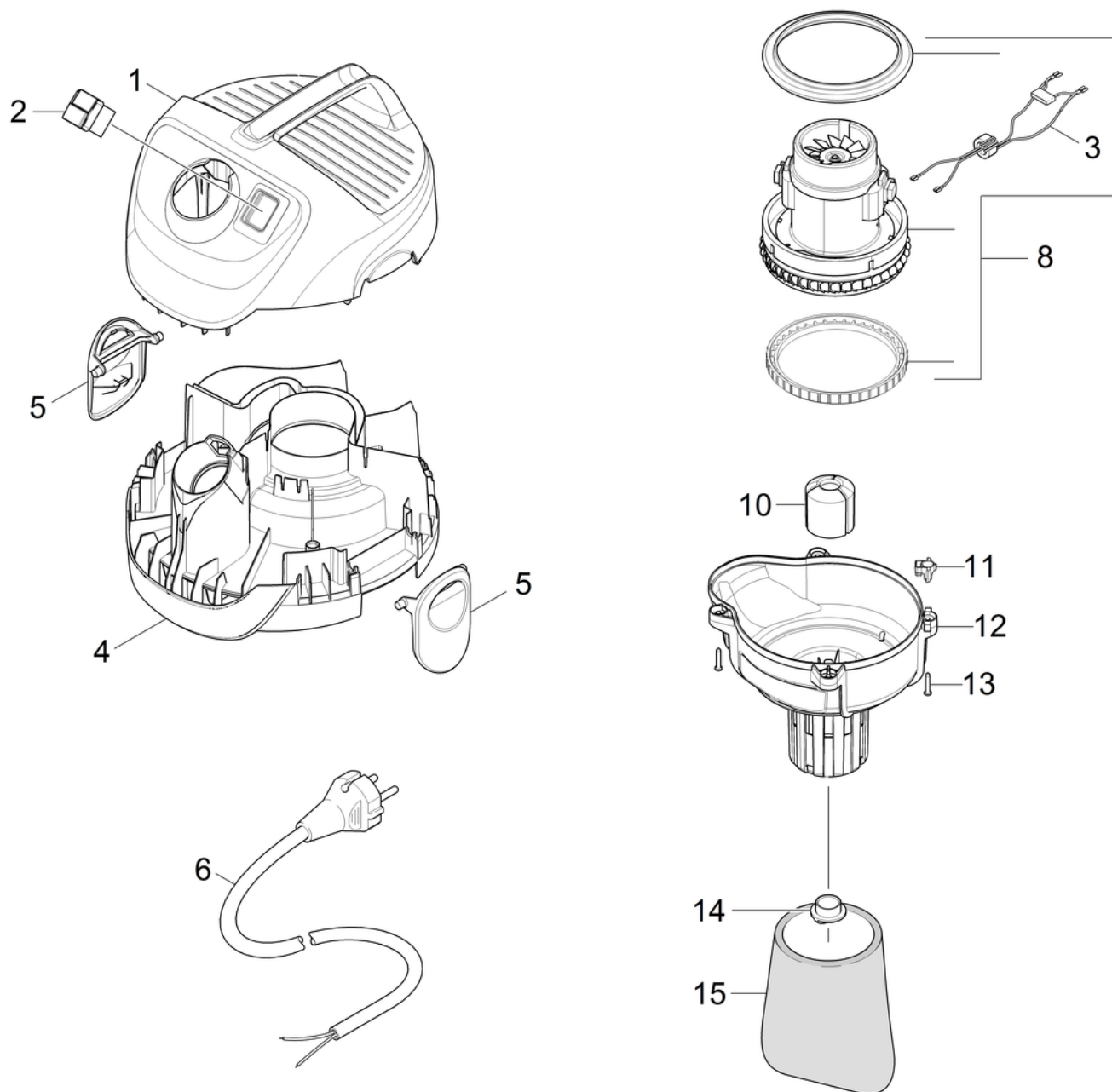


Short spare parts list

POS	Article no.	Description	Quantity	Unit
6	2.863-145.0	Car nozzle WD/SE	1.000	ST
1	6.414-552.0	Cartridge filter WD/SE	1.000	ST
3	6.435-353.0	Castor D 42	4.000	ST
2	4.075-012.0	Closure complete	1.000	ST
13	9.036-691.0	Covering cap	1.000	ST
10	6.900-385.0	Crevice nozzle DN35	1.000	ST
11	2.863-223.0	Crevice nozzle extra long WD/SE	1.000	ST
12	5.731-595.0	Filter	1.000	ST
9	6.904-322.0	Filter bag WD 5pc.	1.000	ST
8	4.629-013.0	Floor tool clip packaged	1.000	ST
7	4.629-016.0	Mixing insert floor nozzle packaged	1.000	ST
5	2.863-147.0	Suction brush soft bristles WD/SE	1.000	ST
14	9.012-109.0	Suction hose complete DN35x2	1.000	ST
15	2.863-148.0	Suction tube DN35	2.000	ST
4	5.070-667.0	Tank	1.000	ST

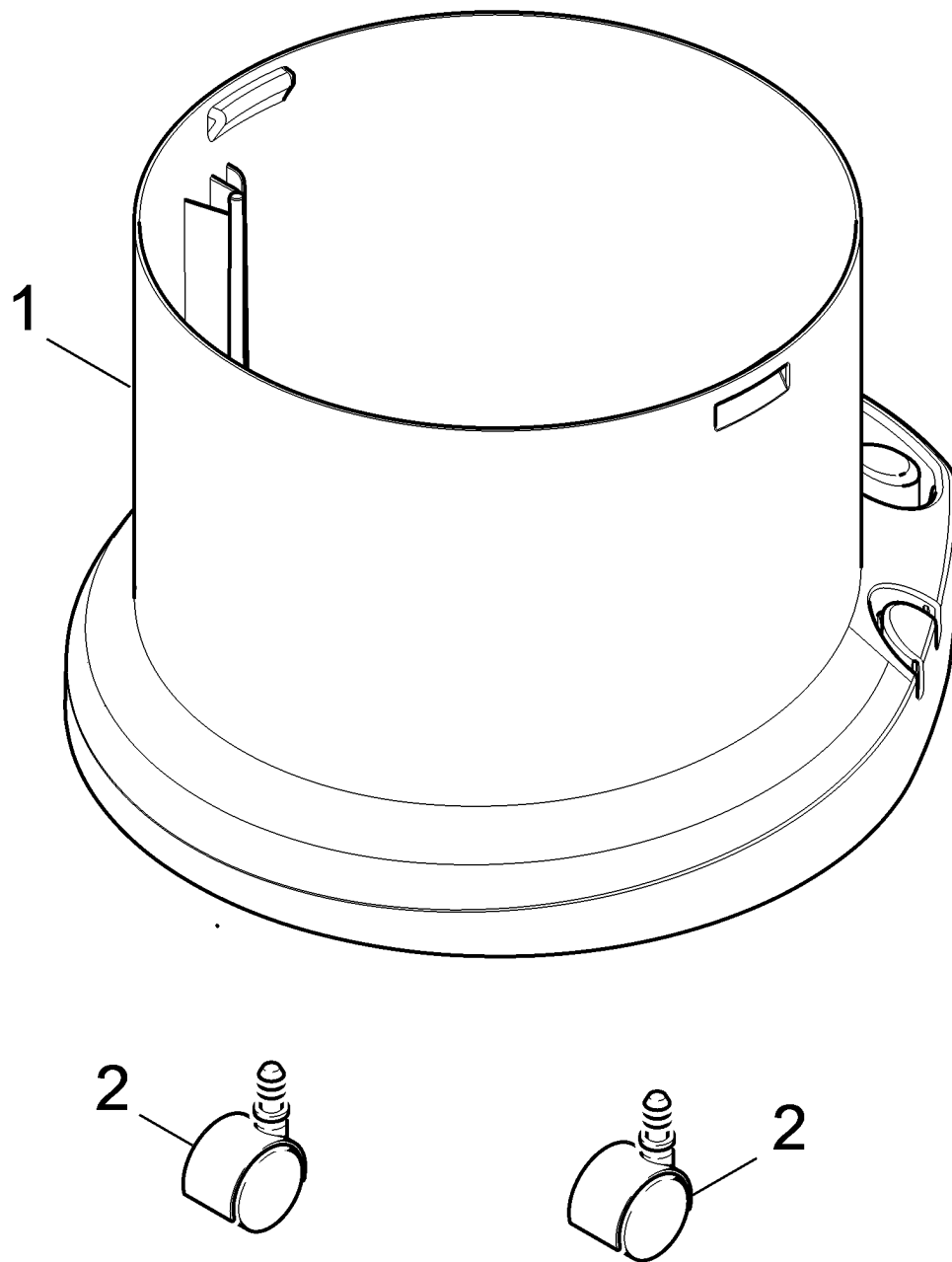
Spare parts list MV 2 *EU I (5.972-694.0)

POS	Description	Quantity	Unit
30	Accessories	1.000	ST
10	Appliance individual parts	1.000	ST
20	Tank	1.000	ST



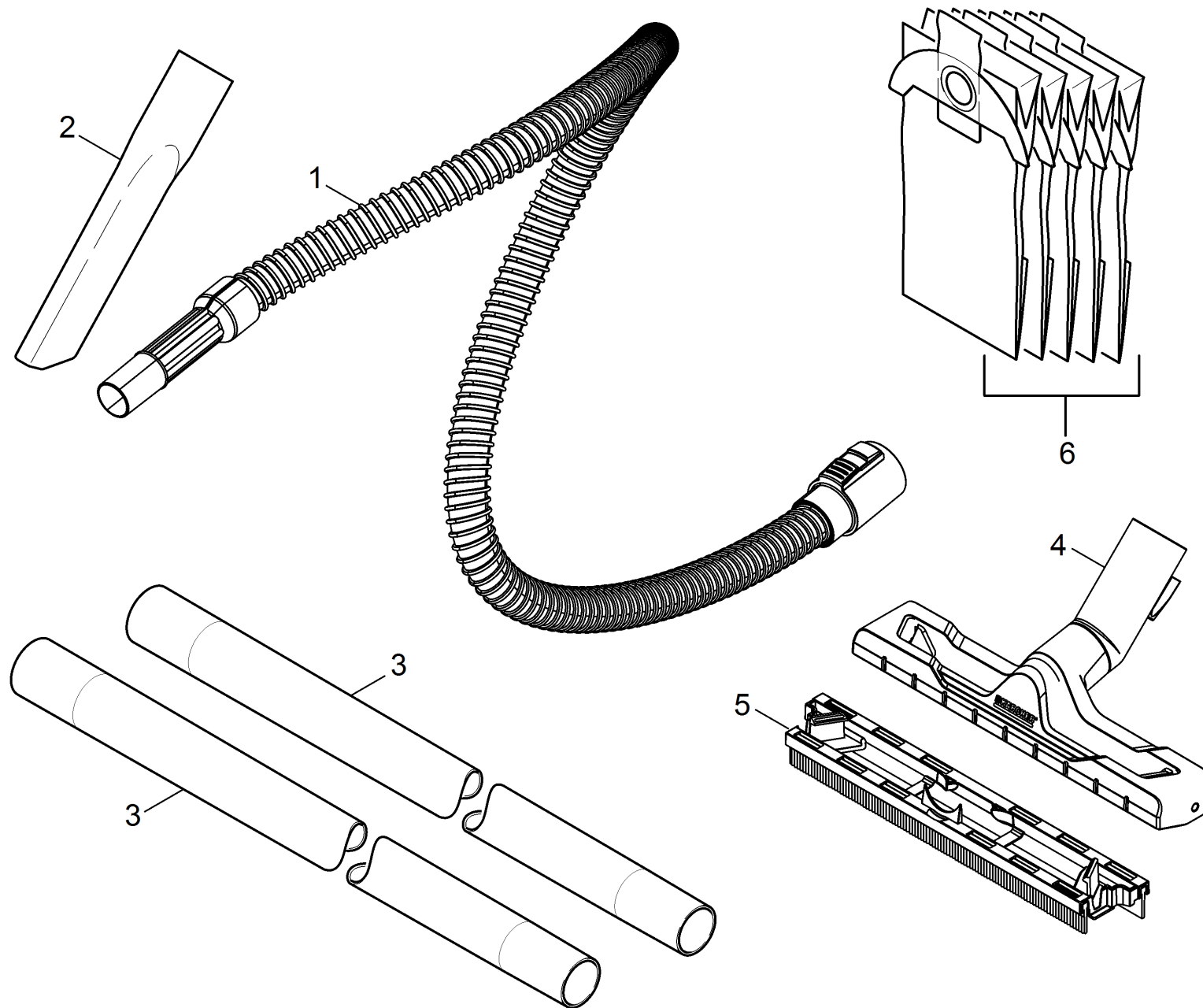
10 Appliance individual parts

POS	Article no.	Description	Quantity	Unit	Remark
6	6.647-996.0	Cable with plug *EU Cable with plug	1.000	ST	*EU
5	5.075-033.0	Closure	2.000	ST	
14	9.036-691.0	Covering cap	1.000	ST	
1	5.069-312.0	Cover neutrally WD 2 / WD 2.XXX	1.000	ST	
15	5.731-595.0	Filter	1.000	ST	
12	5.731-647.0	Filtering basket	1.000	ST	
10	5.585-054.0	Floater	1.000	ST	
4	5.053-184.0	Motor bracket	1.000	ST	
11	5.034-734.0	Retaining bracket	1.000	ST	
13	6.303-150.0	Screw 4,2x 22	4.000	ST	
3	2.884-253.0	Set cable ferrite ring	1.000	ST	
2	6.630-087.0	Switch	1.000	ST	
8	4.490-000.0	Vacuum motor complete for replacement Cu	1.000	ST	



20 Tank

POS	Article no.	Description	Quantity	Unit
2	6.435-353.0	Castor D 42	4.000	ST
1	5.070-667.0	Tank	1.000	ST



30 Accessories

POS	Article no.	Description	Quantity	Unit
2	6.900-385.0	Crevice nozzle DN35	1.000	ST
6	6.904-322.0	Filter bag WD 5pc.	1.000	ST
4	4.629-013.0	Floor tool clip packaged	1.000	ST
5	4.629-016.0	Mixing insert floor nozzle packaged	1.000	ST
1	4.441-084.0	Suction hose complete packaged	1.000	ST
3	2.863-148.0	Suction tube DN35	2.000	ST