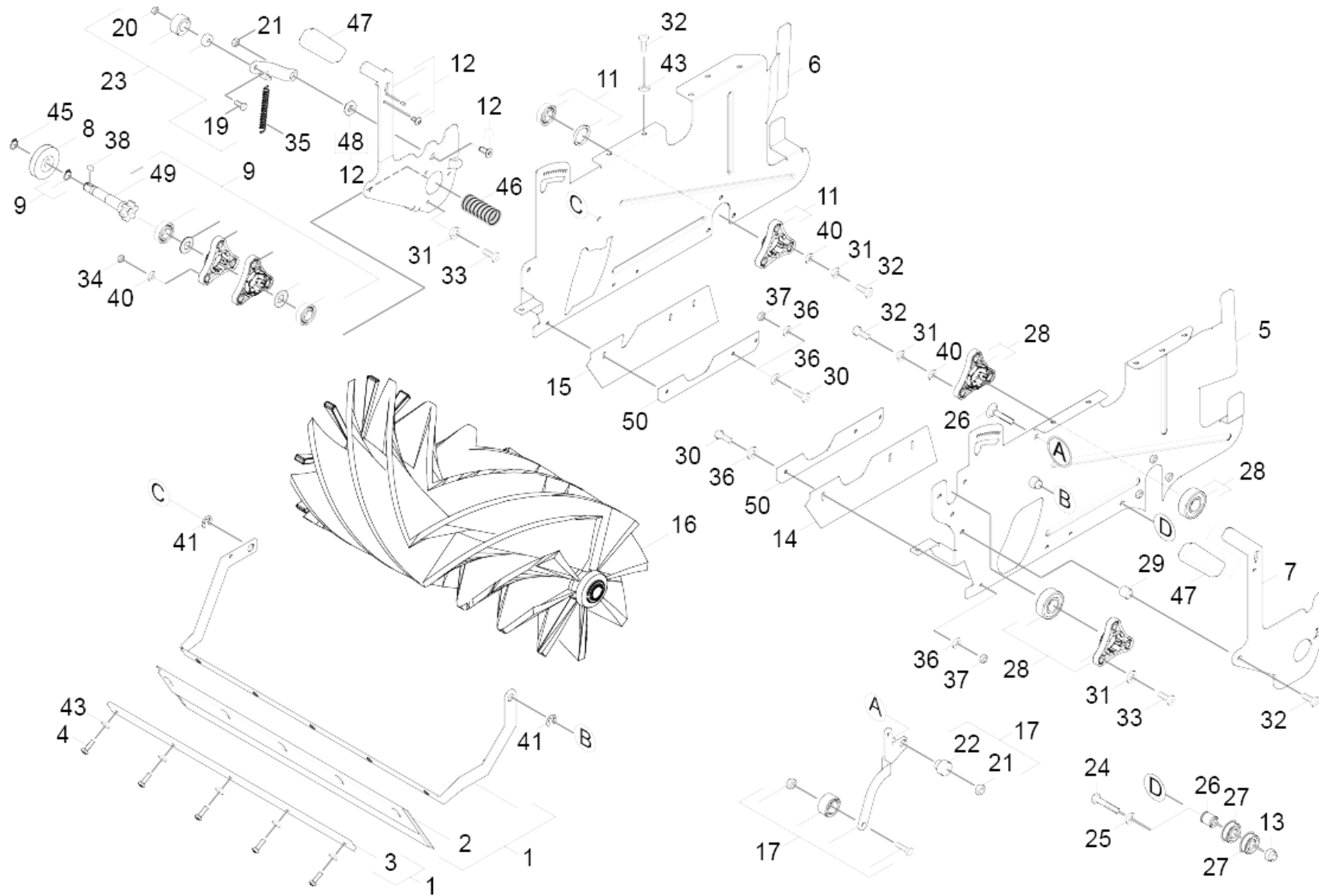


30 Sweep roller chest

Professional \ Sweepers \ Electric motor \ KM 75/40W Bp Pack Boels *EU \ Spare parts list KM 75/40 Bat \ Sweep roller chest



30 Sweep roller chest

Professional \ Sweepers \ Electric motor \ KM 75/40W Bp Pack Boels *EU \ Spare parts list KM 75/40 Bat \ Sweep roller chest



POS	Article no.	Description	Quantity	Unit
1	4.040-633.0	Bulk waste flap complete	1.000	ST
2	5.394-815.0	Skirting front	1.000	ST
3	5.009-265.0	Plate skirting front	1.000	ST
4	7.306-090.0	Screw M6x16 -8.8-R3R (In6Rd)	5.000	ST
5	4.040-689.0	Side plate left complete	1.000	ST
6	4.040-688.0	Side plate right complete	1.000	ST
7	4.040-861.0	Lever left completely	1.000	ST
8	5.625-480.0	Belt pulley D 56,5	1.000	ST
9	4.253-001.0	Bearing flange shaft complete	5.000	ST
10	6.401-331.0	Ball bearing	1.000	ST
11	4.253-002.0	Bearing flange complete D 17	1.000	ST
12	4.040-862.0	Lever right completely	1.000	ST
13	7.311-512.0	Hexagon nut M 6-8-A2E ISO 7040	1.000	ST
14	5.394-817.0	Skirting side left	1.000	ST
15	5.394-818.0	Skirting side right	1.000	ST
16	6.906-950.0	Reversing rolling mill antistatic	1.000	ST
16	6.906-886.0	Reversing rolling mill soft	1.000	ST
16	6.906-885.0	Reversing rolling mill hard	1.000	ST
16	6.906-884.0	Reversing rolling mill standard	1.000	ST
17	4.040-699.0	Belt stretcher gear	1.000	ST
19	7.304-399.0	Hexagonal head screw M 8x25-8.8-A2E ISO	1.000	ST
20	7.311-427.0	Hexagon nut M8 -04-A2E DIN 985	1.000	ST
21	7.311-060.0	Hexagon nut M 8-A2-70 EN 1661	1.000	ST
22	5.116-336.0	Sleeve belt stretcher	1.000	ST
23	4.040-698.0	Belt stretcher reversing rolling mill	1.000	ST
24	7.304-120.0	Hexagonal head screw M 6x35-A4-70 ISO 4	1.000	ST
25	7.312-045.0	Washer 6-200HV-P4E ISO 7089	1.000	ST
26	5.116-408.0	Sleeve	1.000	ST
27	7.401-047.0	Ball bearing 626-2RS -Wälzl.St. DIN 625	2.000	ST
28	4.253-003.0	Bearing flange complete D 15	1.000	ST
29	5.110-177.0	Sleeve	4.000	ST
30	7.306-079.0	Screw M5x25 -8.8-P2R (In6Rd)	6.000	ST
31	7.312-305.0	Spring washer B 6-FST-A2E DIN 137	16.000	ST

30 Sweep roller chest

Professional \ Sweepers \ Electric motor \ KM 75/40W Bp Pack Boels *EU \ Spare parts list KM 75/40 Bat \ Sweep roller chest

KÄRCHER

POS	Article no.	Description	Quantity	Unit
32	7.306-092.0	Screw M6x20-ST- 8.8-R3R (IN6RD)	20.000	ST
33	7.306-105.0	Screw M6x30 -8.8-R3R (In6Rd)	6.000	ST
34	7.311-425.0	Hexagon nut M6 -04-A2E DIN 985	7.000	ST
35	6.330-103.0	Extension spring	1.000	ST
36	7.312-282.0	Washer 5 -A2 ISO 7093-1	12.000	ST
37	7.311-421.0	Hexagon nut M 5-04-A2E DIN 985	6.000	ST
38	7.318-084.0	Parallel key 5x5x12 -C45K DIN 6885-1	1.000	ST
40	7.312-045.0	Washer 6-200HV-P4E ISO 7089	18.000	ST
41	7.343-047.0	Lock washer 10-FST-A2E DIN 6799	2.000	ST
42	7.303-112.0	Screw 6x20 -10.9-R2R (In6Rd)	1.000	ST
43	7.312-276.0	Washer 6 -200HV-A2E ISO7093-1	6.000	ST
45	7.343-031.0	Locking ring 14x1-FST-PHR DIN 471	1.000	ST
46	5.332-114.0	Helical spring	1.000	ST
47	6.321-221.0	Hand grip yellow	2.000	ST
48	5.116-439.0	Sleeve belt stretcher	1.000	ST
49	4.100-233.0	Driveshaft reversing rolling mill comple	1.000	ST
50	5.009-268.0	Plate skirting	2.000	ST