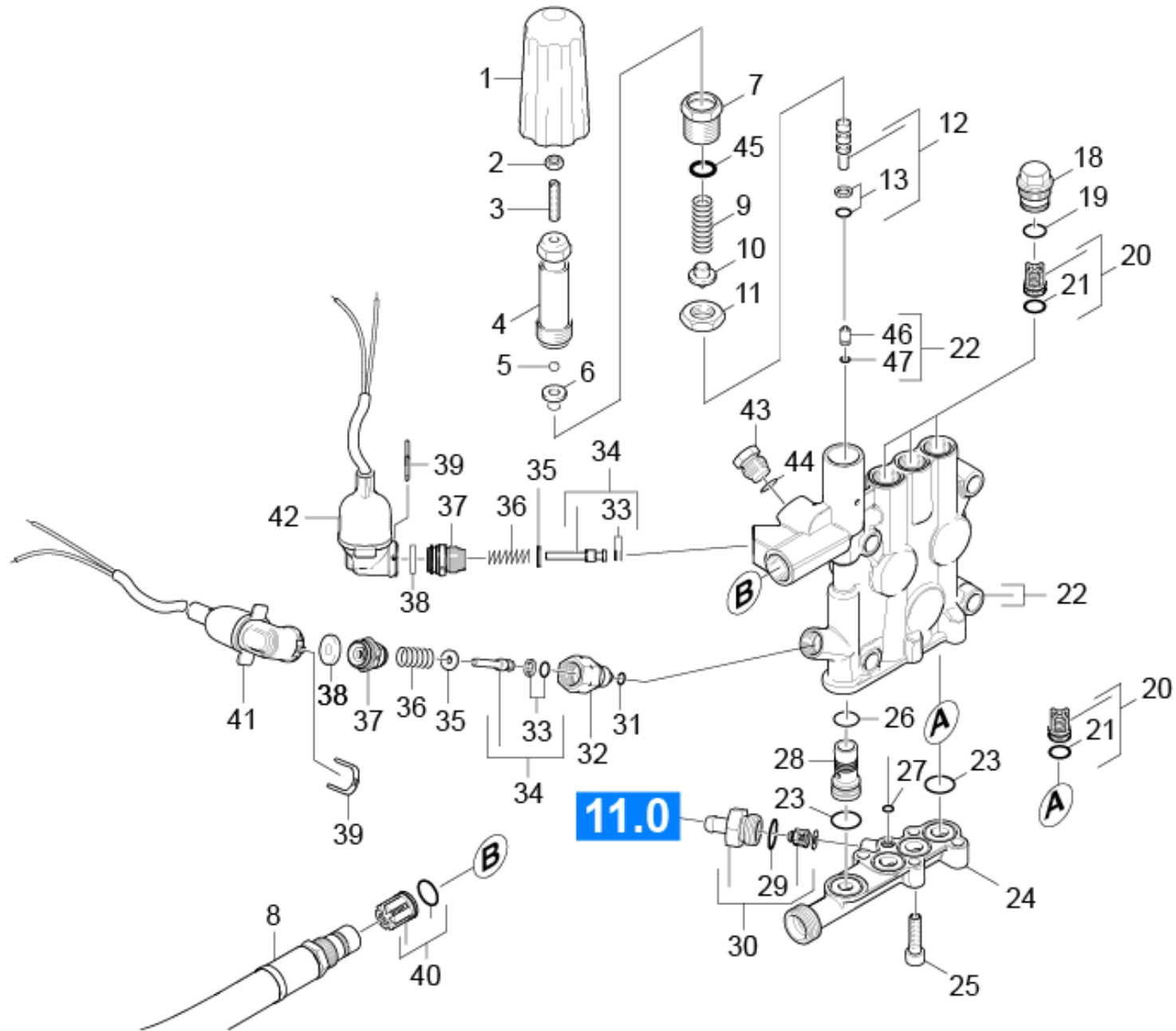


21 Cylinder head

Professional \ High pressure cleaner hotwater \ Electric motor \ HDS 9/18-4 M *EU-I \ HDS 9/18-4 M *EU-I TV 01.01.2018 \ Pump set \ Cylinder head



21 Cylinder head

Professional \ High pressure cleaner hotwater \ Electric motor \ HDS 9/18-4 M *EU-I \ HDS 9/18-4 M *EU-I TV 01.01.2018 \ Pump set \ Cylinder head

KÄRCHER

POS	Article no.	Description	Quantity	Unit
1	5.322-103.0	Handle	1	ST
2	7.311-002.0	Hexagon nut M5 -6-A2E ISO 4032	1	ST
3	7.307-017.0	Threaded pin M5x40 -St-45H-A2E ISO 4026	1	ST
4	5.304-070.0	Hexagonal head screw	1	ST
5	7.401-931.0	Sphere 5 KI3 -1.4401 DIN 5401	1	ST
6	5.582-121.0	Valve disc	1	ST
7	5.404-082.0	Hollow screw	1	ST
8	6.391-629.0	High pressure hose DN 13	1	ST
9	5.332-444.0	Helical spring	1	ST
10	5.584-114.0	Valve pin	1	ST
11	5.311-204.0	Hexagon nut M22x1,5	1	ST
12	4.553-198.0	Piston complete only for replacement	1	ST
13	6.362-468.0	O-Ring seal complete 1ST.-R.	1	ST
18	5.583-146.3	Valve screw	3	ST
19	6.362-481.0	O-Ring seal 14,0 x 2,0 NBR 80	3	ST
20	2.884-512.0	Valve (3 Stueck)	2	ST
21	6.363-003.0	O-Ring seal 13,0 X 2,0-NBR 90	6	ST
22	4.550-889.0	Cylinder head complete	1	ST
23	6.363-536.0	O-Ring seal 21x1,5	4	ST
24	5.427-416.3	Manifold water intake	1	ST
25	7.306-043.0	Cylinder head screw M8x30 -8.8-A2E ISO	4	ST
26	6.362-381.0	O-Ring seal 13x2 - NBR 70	1	ST
27	6.362-703.0	O-Ring seal 6,0x1,5-NBR 70	1	ST
28	5.110-865.0	Sleeve	1	ST
29	6.362-427.0	O-Ring seal 15,0x2,0	1	ST
30	4.580-581.3	Valve complete	1	ST
31	6.362-853.0	O-Ring seal 4,47x1,78	1	ST
32	5.402-705.3	Joining piece	1	ST
33	6.363-037.0	O-Ring seal complete 1ST.-R.	2	ST
34	4.553-197.0	Piston complete only for replacement	2	ST
35	5.115-796.0	Washer	2	ST
36	5.332-268.0	Helical spring	2	ST
37	5.411-148.0	Screw plug	2	ST

21 Cylinder head

Professional \ High pressure cleaner hotwater \ Electric motor \ HDS 9/18-4 M *EU-I \ HDS 9/18-4 M *EU-I TV 01.01.2018 \ Pump set \ Cylinder head

KÄRCHER

POS	Article no.	Description	Quantity	Unit
38	5.367-030.0	Diaphragm	2	ST
39	5.034-494.0	Retaining bracket	2	ST
40	4.580-594.0	Valve complete	1	ST
41	4.744-225.3	Switch complete	1	ST
42	4.744-224.0	Switch complete	1	ST
43	5.411-504.0	Screw plug	1	ST
44	6.362-176.0	O-Ring seal 6,07x1,78	1	ST
45	6.362-079.0	O-Ring seal 18,0 X 2,5	1	ST
46	5.581-239.0	Valve seat	1	ST
47	6.362-386.0	O-Ring seal 5,0 x 1,5-NBR 80	1	ST
100	2.885-035.0	Spare part set pump	1	ST