

## **Spare parts list**

(1.033-315.0) CV 38/2 \*EU

## Table of contents

---

CV 38/2 *EU (1.033-315.0)	3
5 Spare parts list CV 38/2, CV 48/2 (5.970-967.0)	4
10 Top part	5
11 Individual parts	6
20 Accessories kit clamp (4.262-015.0)	8
12 Appliance top part	10
2 Covering cap complete only for replaceme (4.032-003.0)	13
20 Brush-head	15
21 Brush-head	16
4 Housing complete (4.062-007.0)	18
5 Adjusting wheel complete (4.515-316.0)	20
15 Covering cap complete belt (4.063-774.0)	22
22 Brush-head	24
4 Housing complete (4.062-009.0)	26
5 Adjusting wheel complete (4.515-316.0)	28
15 Covering cap complete belt (4.063-774.0)	30
30 Vacuum motor	32
40 Accessories	34

CV 38/2 \*EU (1.033-315.0)

---

<b>POS</b>	<b>Article no.</b>	<b>Description</b>	<b>Quantity</b>	<b>Unit</b>
5	5.970-967.0	Spare parts list CV 38/2, CV 48/2	1.000	ST

5 Spare parts list CV 38/2, CV 48/2 (5.970-967.0)

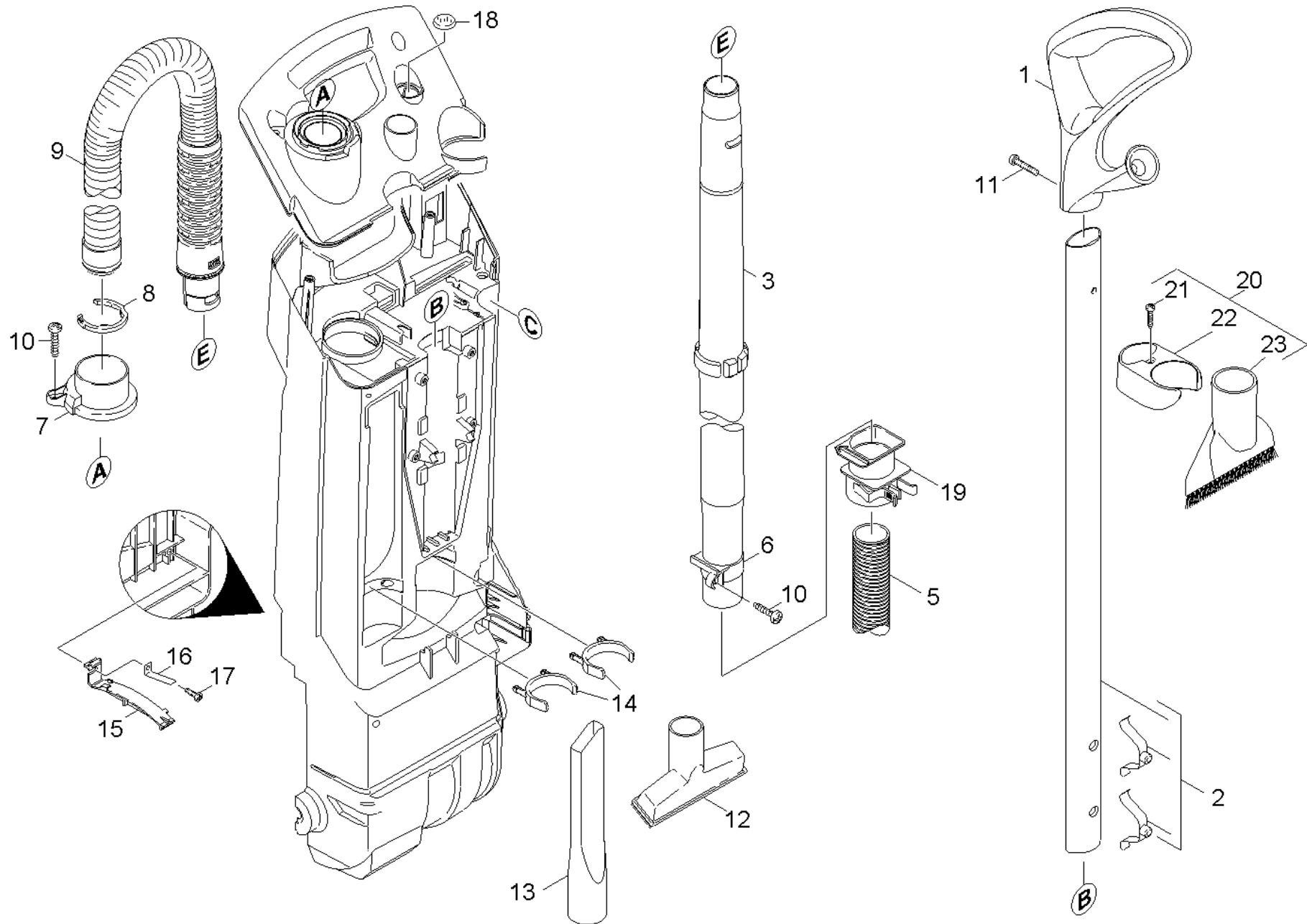
---

<b>POS</b>	<b>Description</b>	<b>Quantity</b>	<b>Unit</b>
40	Accessories	1.000	ST
20	Brush-head	1.000	ST
10	Top part	1.000	ST
30	Vacuum motor	1.000	ST

## 10 Top part

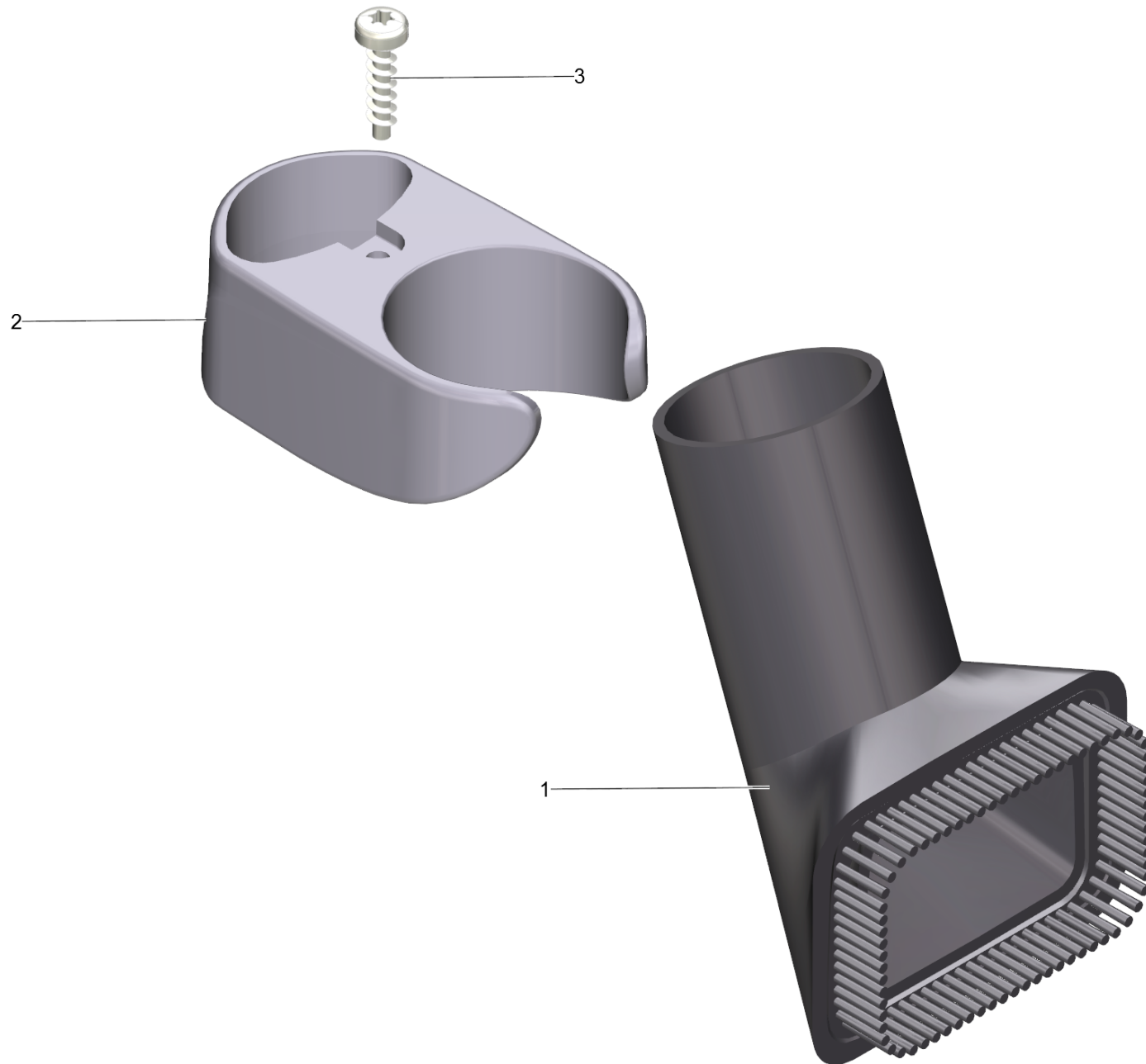
---

<b>POS</b>	<b>Description</b>	<b>Quantity</b>	<b>Unit</b>
12	Appliance top part	1.000	ST
11	Individual parts	1.000	ST



## 11 Individual parts

POS	Article no.	Description	Quantity	Unit
20	4.262-015.0	Accessories kit clamp	1.000	ST
22	5.332-980.0	Clamp	1.000	ST
14	5.041-111.0	Clip accessories	2.000	ST
13	6.906-240.0	Crevice nozzle DN35	1.000	ST
1	5.321-713.0	Handhold	1.000	ST
2	4.128-001.0	Handle complete only for replacement	1.000	ST
15	5.042-836.0	Holder filter	1.000	ST
7	5.032-540.0	Hosebarb	1.000	ST
18	5.031-521.0	Lens	1.000	ST
8	5.031-011.0	Locking ring	1.000	ST
6	5.570-075.0	Ring suction tube	1.000	ST
17	7.303-106.0	Screw 4x12 -10.9-R2R (IN6RD)	1.000	ST
10	7.303-108.0	Screw 5x20 -10.9-R2R (In6Rd)	2.000	ST
21	7.303-212.0	Screw 5x20 -A2-70 (In6Rd)	1.000	ST
11	7.303-278.0	Screw 5x45 -A2-70 (In6Rd)	1.000	ST
19	5.407-135.0	Sleeve suction tube qusty grey	1.000	ST
16	5.332-339.0	Spring	1.000	ST
23	6.903-862.0	Suction brush DN35	1.000	ST
5	6.391-115.0	Suction hose DN32	1.000	ST
9	6.391-934.0	Suction hose DN32	1.000	ST
3	5.129-046.0	Suction tube	1.000	ST
12	6.905-998.0	Upholstery nozzle complete NW35	1.000	ST

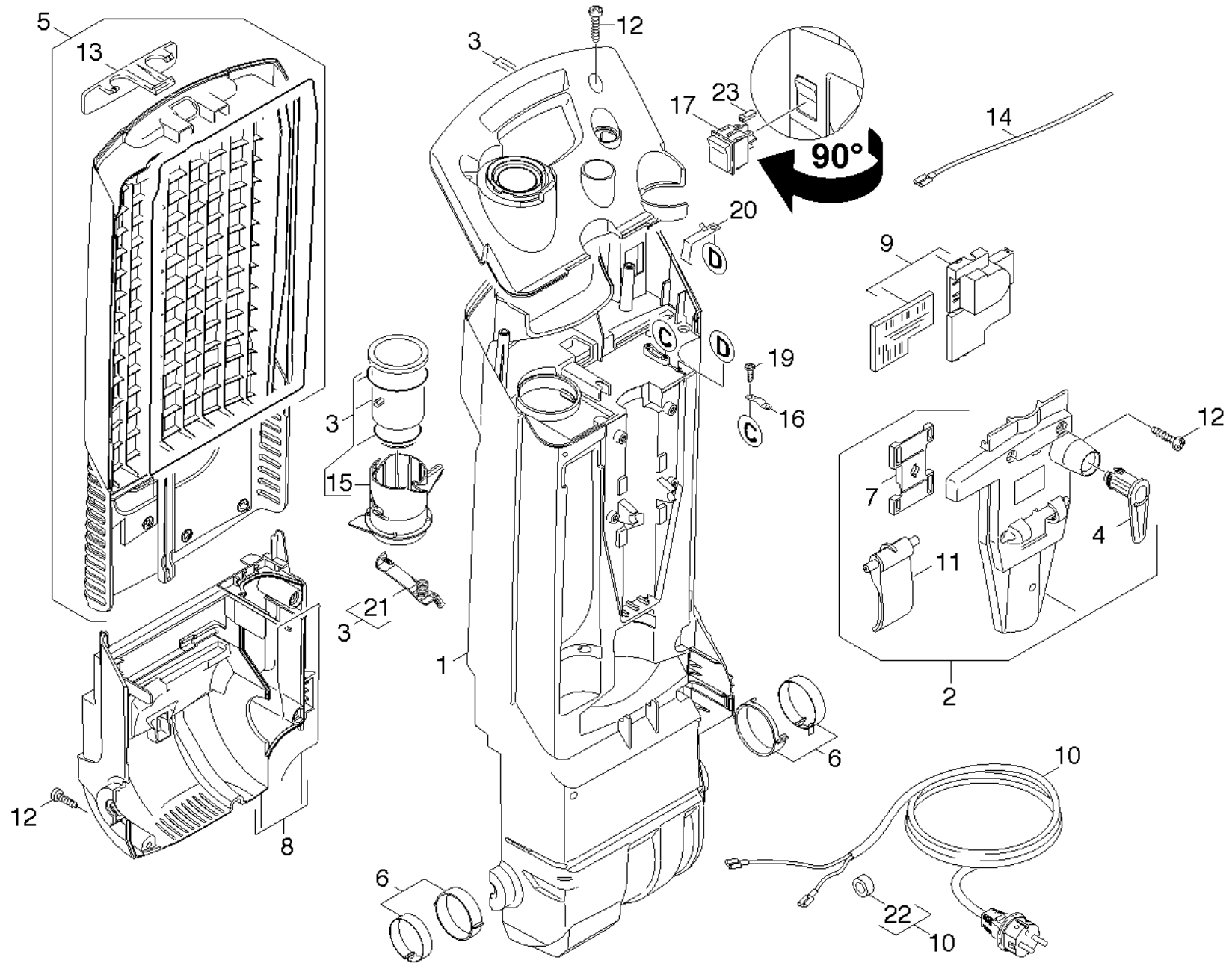




20 Accessories kit clamp (4.262-015.0)

---

POS	Article no.	Description	Quantity	Unit
2	5.332-980.0	Clamp	1.000	ST
3	7.303-212.0	Screw 5x20 -A2-70 (In6Rd)	1.000	ST
1	6.903-862.0	Suction brush DN35	1.000	ST

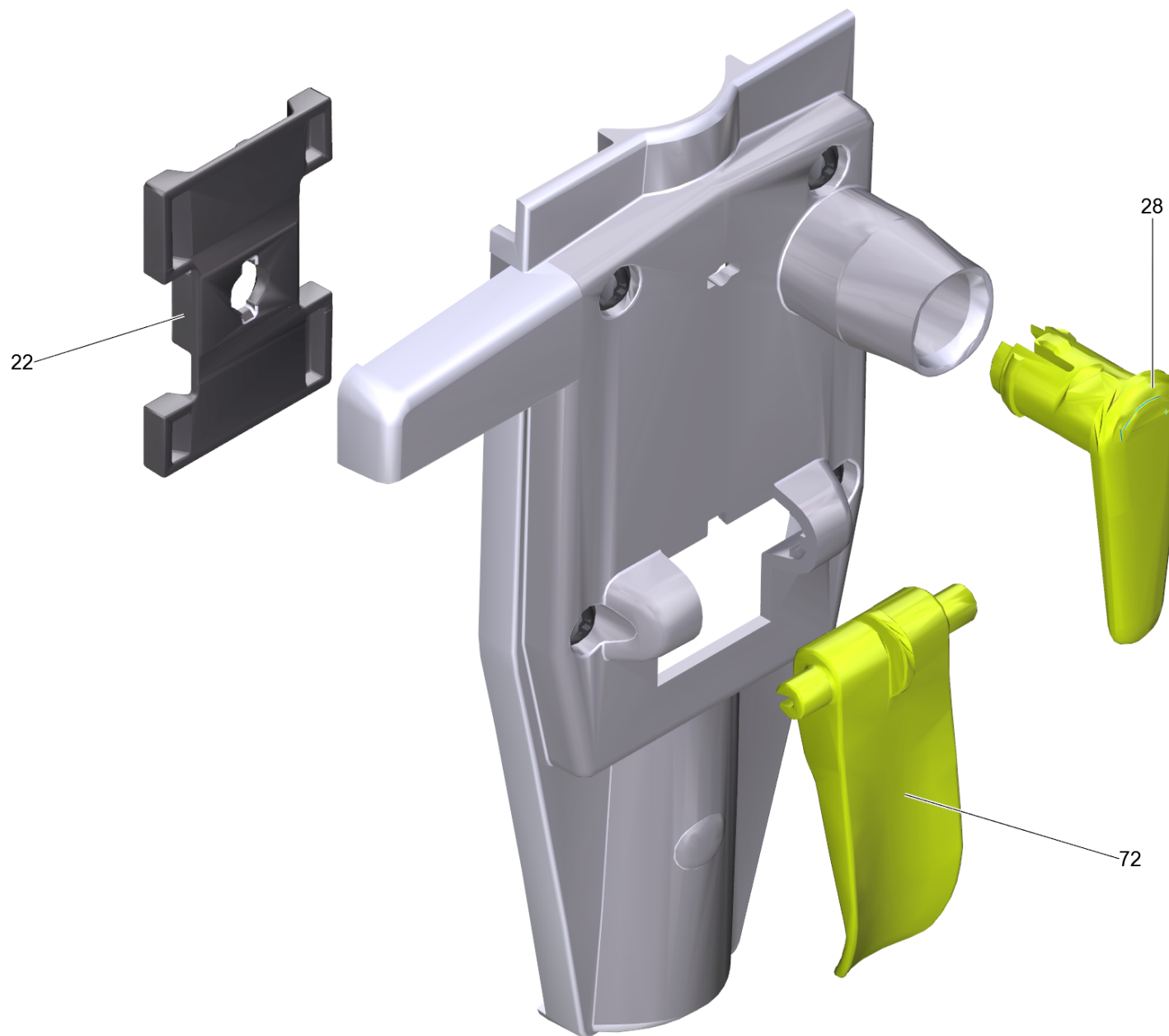


## 12 Appliance top part

POS	Article no.	Description	Quantity	Unit	Remark	Foot note text
4	5.044-661.0	Catch for cable yellow	1.000	ST		
9	4.682-000.0	Circuit board only for replacement CV30/	1.000	ST		
7	5.032-448.0	CLAMP	1.000	ST		
16	6.903-241.0	Clamp clip	1.000	ST		
11	5.481-345.0	Clamp lever	1.000	ST		
13	5.075-038.0	Closure cover	1.000	ST		YELLOW
13	5.075-030.0	Closure cover	1.000	ST		BLACK
5	4.064-020.0	Cover complete	1.000	ST		
	<b>Item text1:</b> 1.033-321.0 / -322.0 / -323.0					
	<b>Item text2:</b> 1.057-315.0 / -316.0 / -317.0					
5	4.064-016.0	Cover complete	1.000	ST		
	<b>Item text1:</b> 1.033-315.0 / -316.0 / -317.0 / -319.0 -					
	<b>Item text2:</b> 1.057-310.0 / -311.0 / -312.0 / -320.0					
2	4.032-003.0	Covering cap complete only for replaceme	1.000	ST		
3	4.032-004.0	Covering cap electric	1.000	ST		
8	4.053-224.0	Covering cap motor complete nur fuer Ers	1.000	ST		
14	4.839-402.0	Electrical small parts CV 38/2, CV 48/2	1.000	ST		
22	6.346-043.0	Ferrite ring	1.000	ST		
1	4.071-561.0	Housing	1.000	ST		
23	6.647-748.0	Insulation sheath	2.000	ST		
15	5.481-352.0	OPERATING LEVER	1.000	ST		
10	4.649-049.0	Power cable for replacement	1.000	ST	*EU	
	<b>Item text1:</b> 1.033-315.0 - 1.057-310.0					
10	4.649-042.0	Power cable for replacement	1.000	ST		
	<b>Item text1:</b> 1.033-321.0 - 1.057-315.0					
10	4.649-036.0	Power cable for replacement	1.000	ST	*GB	
	<b>Item text1:</b> 1.033-316.0 / -322.0 - 1.057-311.0					
	<b>Item text2:</b> / -316.0					
10	4.649-037.0	Power cable for replacement	1.000	ST	*AU	
	<b>Item text1:</b> 1.033-317.0 / -323.0 - 1.057-312.0					
	<b>Item text2:</b> / -317.0					

## 12 Appliance top part

POS	Article no.	Description	Quantity	Unit	Remark	Foot note text
10	4.649-059.0	Power cable for replacement *CN	1.000	ST	*CN	
	<b>Item text1:</b> 1.033-319.0 / -320.0					
17	6.630-156.0	Rocker switch black	1.000	ST		
19	6.303-318.0	Screw 3,5x12-10.9-R2R (IN6RD)	2.000	ST		
12	7.303-108.0	Screw 5x20 -10.9-R2R (In6Rd)	9.000	ST		
6	2.889-076.0	Set bearing shells	1.000	ST		
21	4.332-008.0	Spring connection piece completely	1.000	ST		
20	5.034-689.0	Spring earthing	1.000	ST		



2 Covering cap complete only for replaceme (4.032-003.0)

---

<b>POS</b>	<b>Article no.</b>	<b>Description</b>	<b>Quantity</b>	<b>Unit</b>
28	5.044-661.0	Catch for cable yellow	1.000	ST
22	5.032-448.0	CLAMP	1.000	ST
72	5.481-345.0	Clamp lever	1.000	ST

20 Brush-head

---

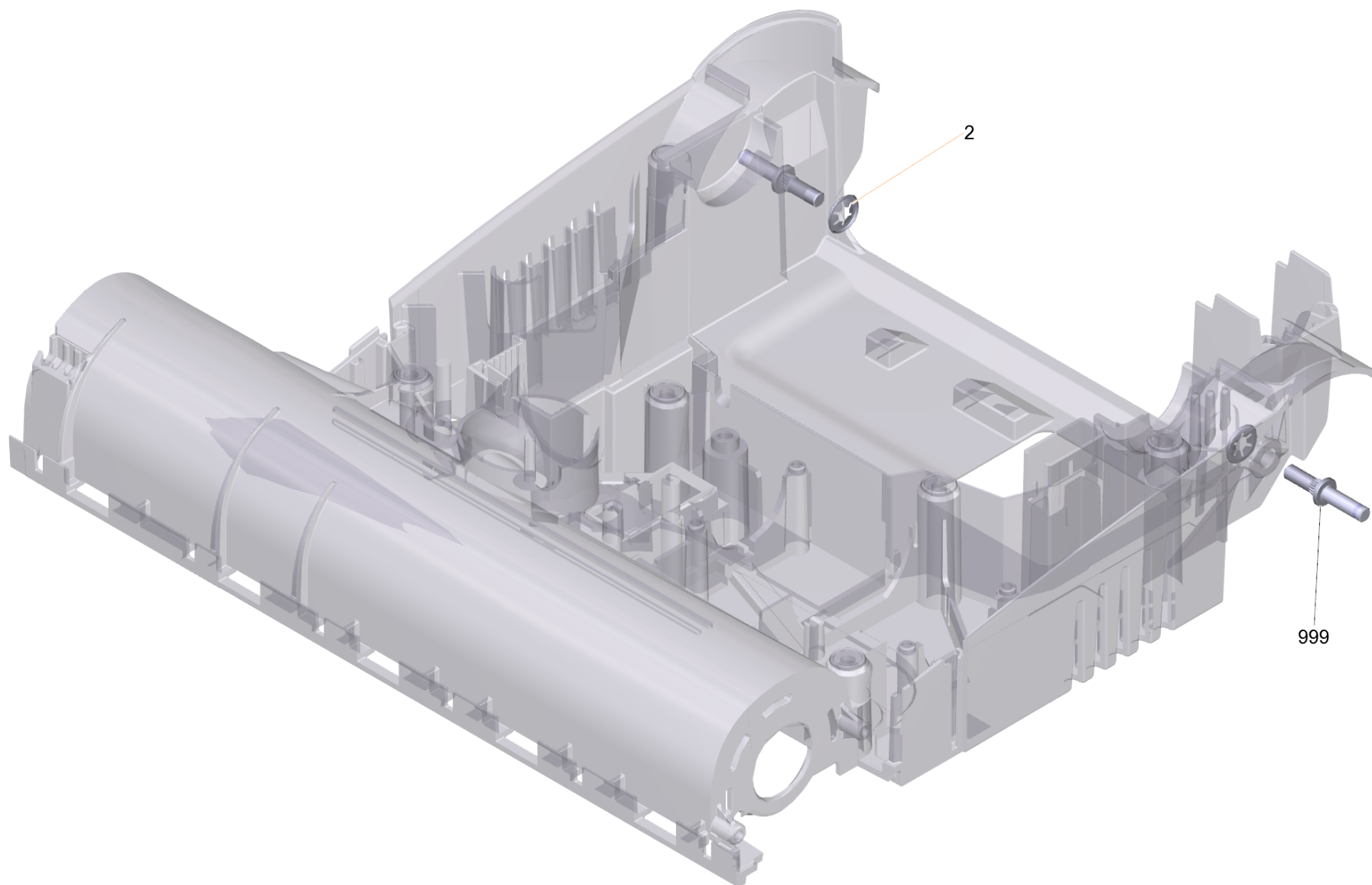
POS	Description	Quantity	Unit	Remark
22	Brush-head	1.000	ST	CV 48/2
21	Brush-head	1.000	ST	CV 38/2





## 21 Brush-head

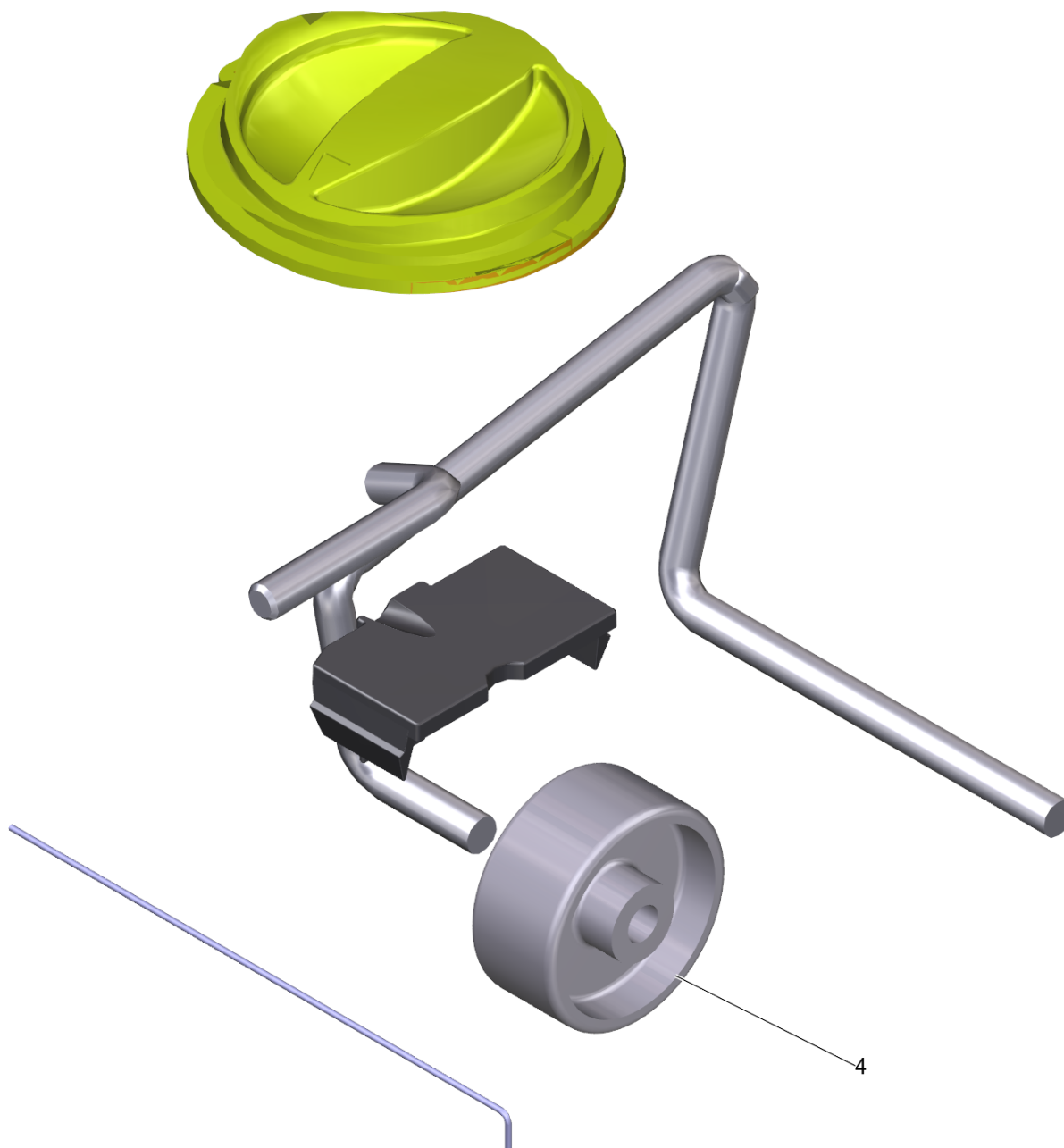
POS	Article no.	Description	Quantity	Unit	Foot note text
5	4.515-311.0	Adjusting wheel complete	1.000	ST	
	<b>Item text1:</b> 1.033-315.0 / -316.0 / -317.0 / -319.0				
5	4.515-316.0	Adjusting wheel complete	1.000	ST	
	<b>Item text1:</b> 1.033-321.0 / -322.0 / -323.0				
19	9.412-178.0	Axle	1.000	ST	
1	5.032-456.0	Bumper CV 38/1	1.000	ST	
6	2.889-084.0	Closure parts set for replacement	1.000	ST	
15	4.063-774.0	Covering cap complete belt	1.000	ST	
14	4.063-892.0	Covering cap complete brush Aluminiumdru	1.000	ST	
7	4.481-265.0	Foot pedal complete	1.000	ST	YELLOW
7	4.481-000.0	Foot pedal complete only for replacement	1.000	ST	BLACK
27	5.332-082.0	Helical spring	1.000	ST	
4	4.062-007.0	Housing complete	1.000	ST	
3	4.062-008.0	Housing top part complete	1.000	ST	
	<b>Item text1:</b> 1.033-315.0 / -316.0 / -317.0 / -319.0				
3	4.062-013.0	Housing top part complete	1.000	ST	
	<b>Item text1:</b> 1.033-321.0 / -322.0 / -323.0				
20	5.033-452.0	Lens	1.000	ST	
10	6.343-187.0	Lock washer	2.000	ST	
11	6.343-119.0	Lock washer	2.000	ST	
21	6.630-135.0	Micro switch	1.000	ST	
23	4.613-001.0	Motor complete	1.000	ST	
25	5.033-459.0	Pinion	1.000	ST	
22	6.682-291.0	Printed circuit board 230V	1.000	ST	
26	6.286-573.0	Protecting cap	1.000	ST	
9	6.906-643.0	Roller brush black	1.000	ST	
13	7.303-106.0	Screw 4x12 -10.9-R2R (IN6RD)	2.000	ST	
24	7.303-096.0	Screw 4x22 -ST-10.9-R2R (IN6RD)	4.000	ST	
18	7.303-109.0	Screw 5x25 -10.9-R2R (In6Rd)	8.000	ST	
12	5.401-288.0	Screw connector part	2.000	ST	
2	5.059-141.3	Sliding bottom for replacement	1.000	ST	
17	6.348-460.0	Toothed belt	1.000	ST	
8	5.515-374.0	Wheel	2.000	ST	



4 Housing complete (4.062-007.0)

---

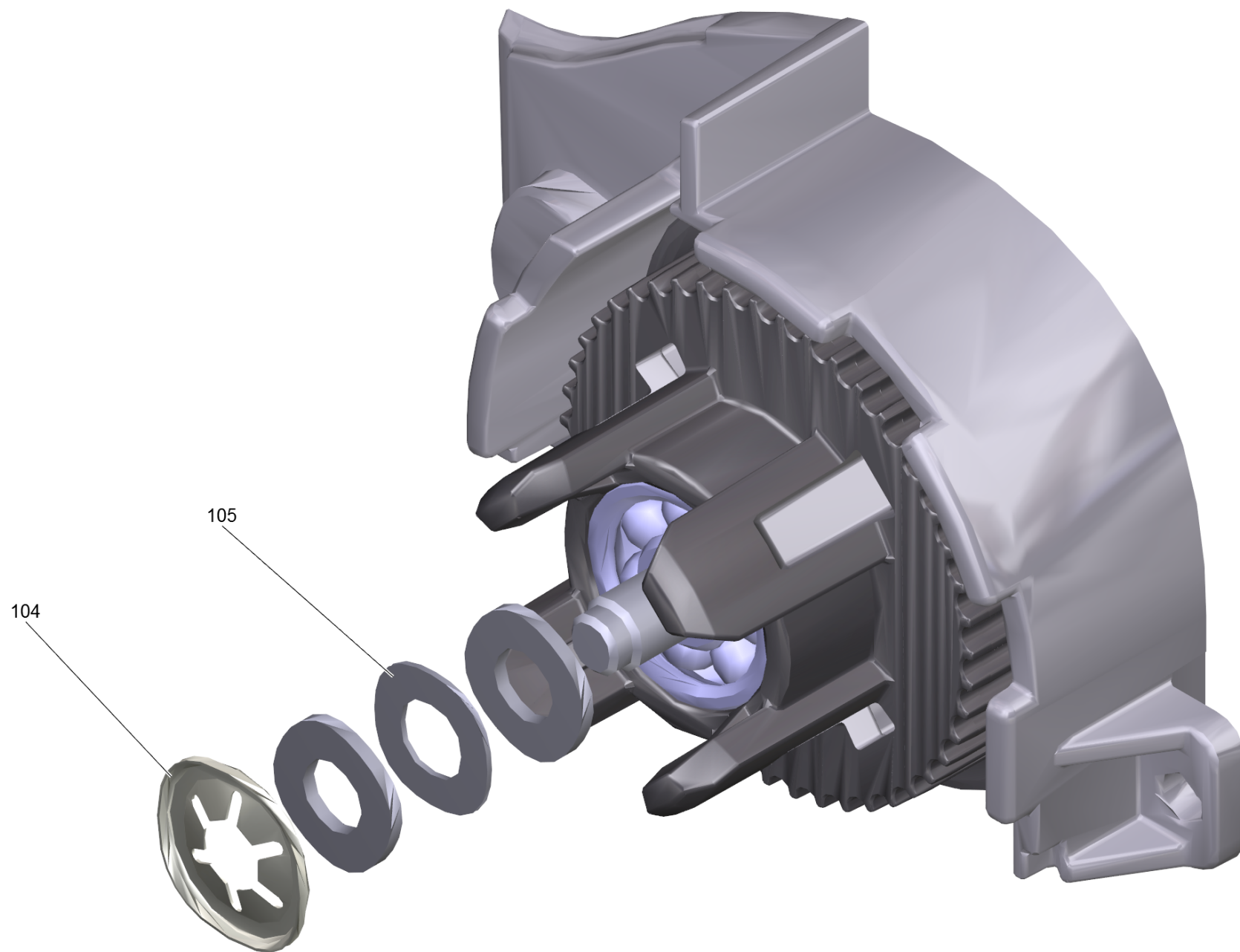
<b>POS</b>	<b>Article no.</b>	<b>Description</b>	<b>Quantity</b>	<b>Unit</b>
999	9.412-178.0	Axle	2.000	ST
2	6.343-119.0	Lock washer	2.000	ST



5 Adjusting wheel complete (4.515-316.0)

---

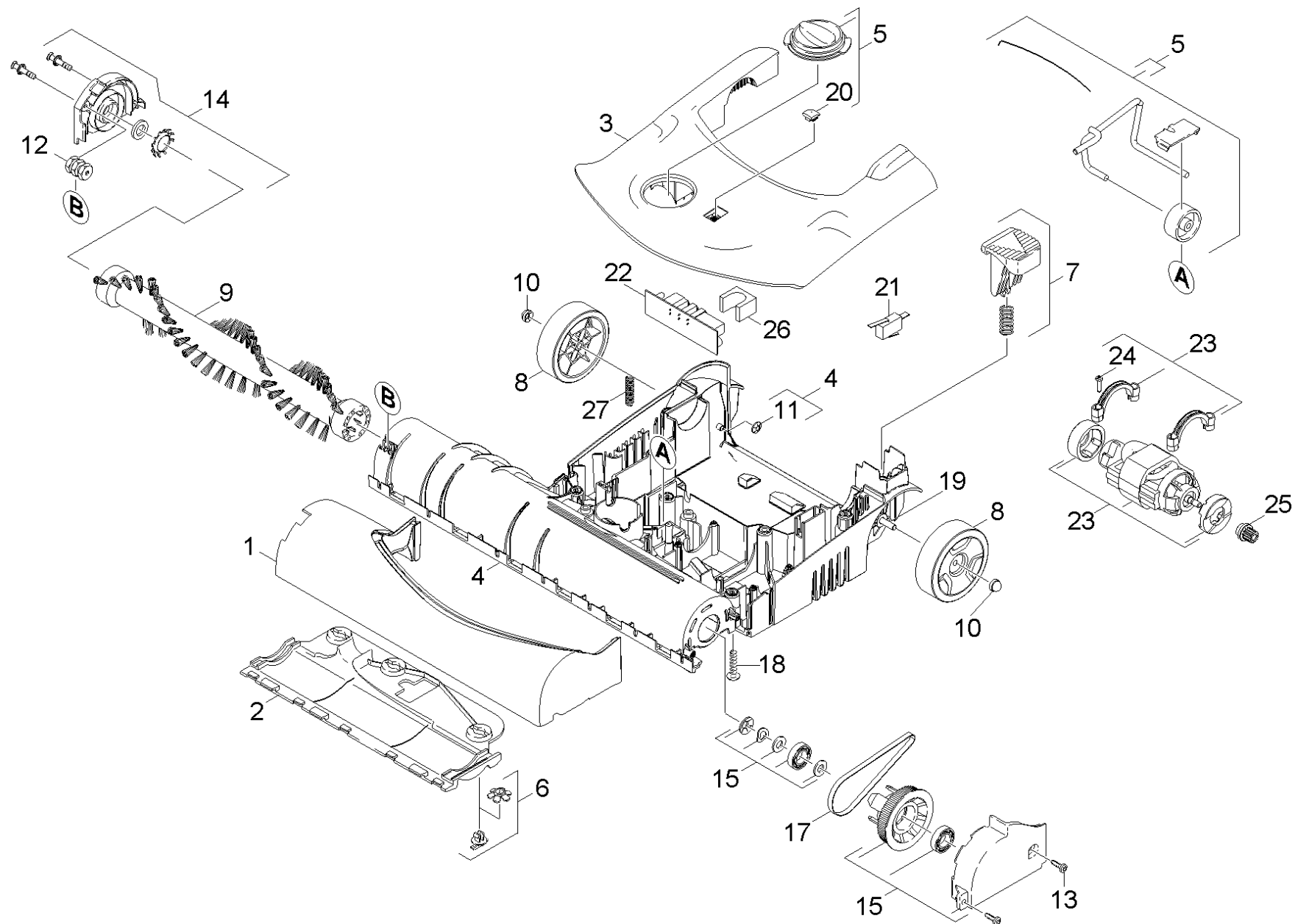
POS	Article no.	Description	Quantity	Unit
4	5.515-069.0	Wheel	1.000	ST



15 Covering cap complete belt (4.063-774.0)

---

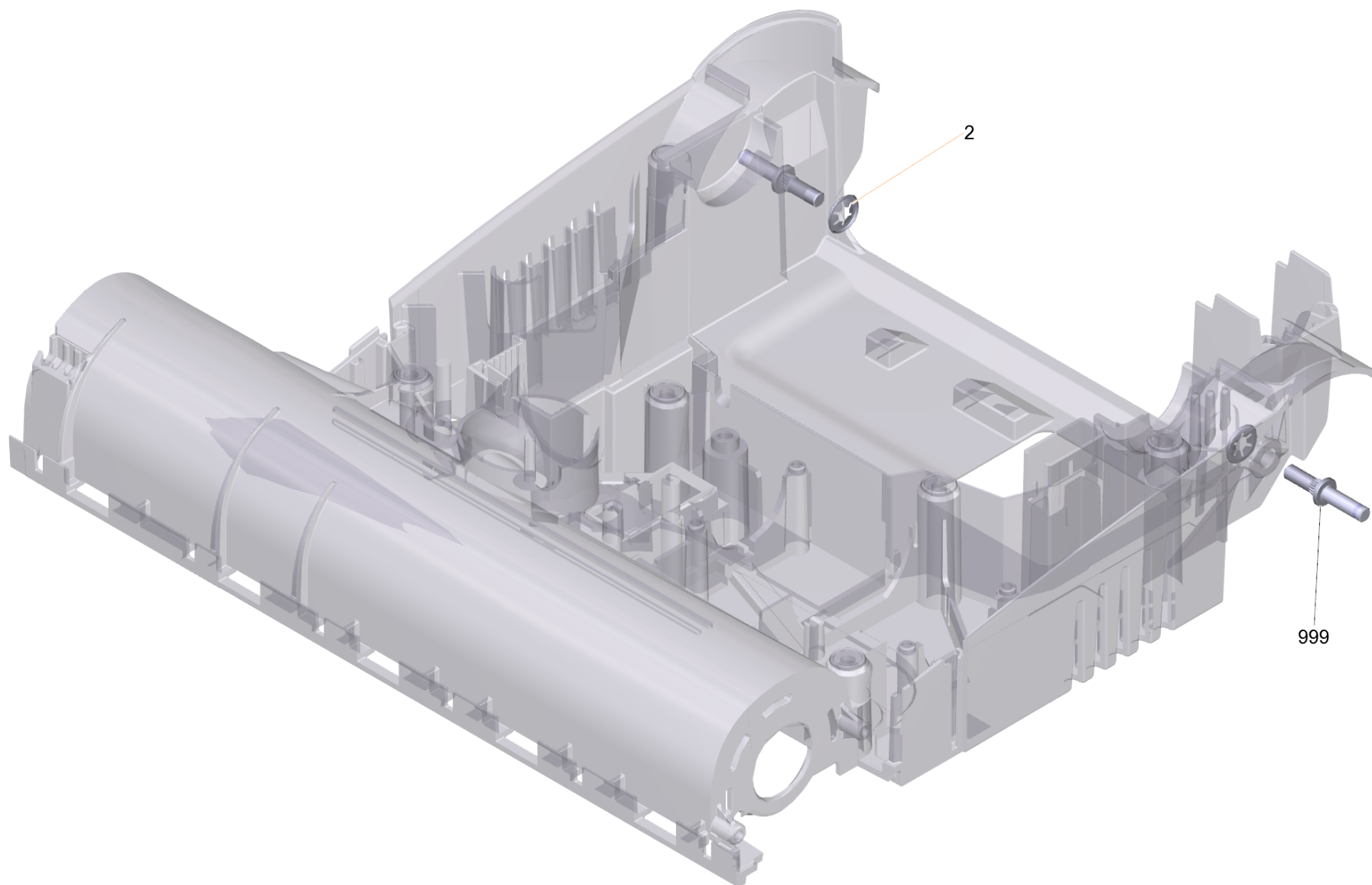
<b>POS</b>	<b>Article no.</b>	<b>Description</b>	<b>Quantity</b>	<b>Unit</b>
104	6.343-119.0	Lock washer	1.000	ST
105	7.312-305.0	Spring washer B 6-FST-A2E DIN 137	1.000	ST





## 22 Brush-head

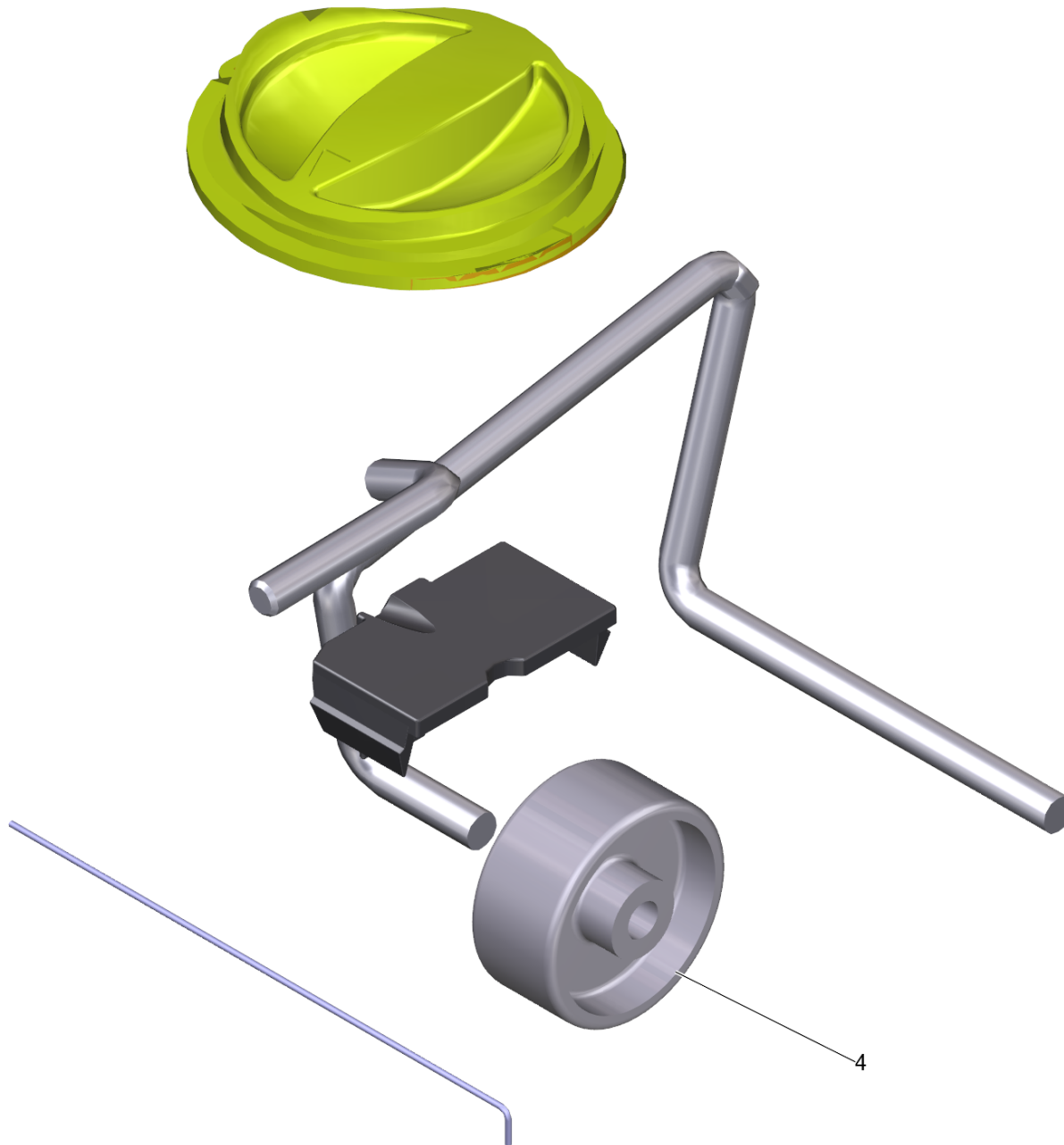
POS	Article no.	Description	Quantity	Unit	Foot note text
5	4.515-311.0	Adjusting wheel complete	1.000	ST	
	<b>Item text1:</b> 1.057-310.0 / -311.0 / -312.0 / -320.0				
5	4.515-316.0	Adjusting wheel complete	1.000	ST	
	<b>Item text1:</b> 1.057-315.0 / -316.0 / -317.0				
19	9.412-178.0	Axle	1.000	ST	
1	5.033-457.0	Bumper	1.000	ST	
6	2.889-084.0	Closure parts set for replacement	1.000	ST	
15	4.063-774.0	Covering cap complete belt	1.000	ST	
14	4.063-892.0	Covering cap complete brush Aluminiumdru	1.000	ST	
7	4.481-265.0	Foot pedal complete	1.000	ST	YELLOW
7	4.481-000.0	Foot pedal complete only for replacement	1.000	ST	BLACK
27	5.332-082.0	Helical spring	1.000	ST	
4	4.062-009.0	Housing complete	1.000	ST	
3	4.062-008.0	Housing top part complete	1.000	ST	
	<b>Item text1:</b> 1.057-310.0 / -311.0 / -312.0 / -320.0				
3	4.062-013.0	Housing top part complete	1.000	ST	
	<b>Item text1:</b> 1.057-315.0 / -316.0 / -317.0				
20	5.033-452.0	Lens	1.000	ST	
10	6.343-187.0	Lock washer	2.000	ST	
11	6.343-119.0	Lock washer	2.000	ST	
21	6.630-135.0	Micro switch	1.000	ST	
23	4.613-001.0	Motor complete	1.000	ST	
25	5.033-459.0	Pinion	1.000	ST	
22	6.682-291.0	Printed circuit board 230V	1.000	ST	
26	6.286-573.0	Protecting cap	1.000	ST	
9	4.762-489.0	Roller brush black	1.000	ST	
13	7.303-106.0	Screw 4x12 -10.9-R2R (IN6RD)	2.000	ST	
24	7.303-096.0	Screw 4x22 -ST-10.9-R2R (IN6RD)	4.000	ST	
18	7.303-109.0	Screw 5x25 -10.9-R2R (In6Rd)	8.000	ST	
12	5.401-288.0	Screw connector part	2.000	ST	
2	5.059-142.3	Sliding bottom packaged CV 48/2	1.000	ST	
17	6.348-460.0	Toothed belt	1.000	ST	
8	5.515-374.0	Wheel	2.000	ST	



4 Housing complete (4.062-009.0)

---

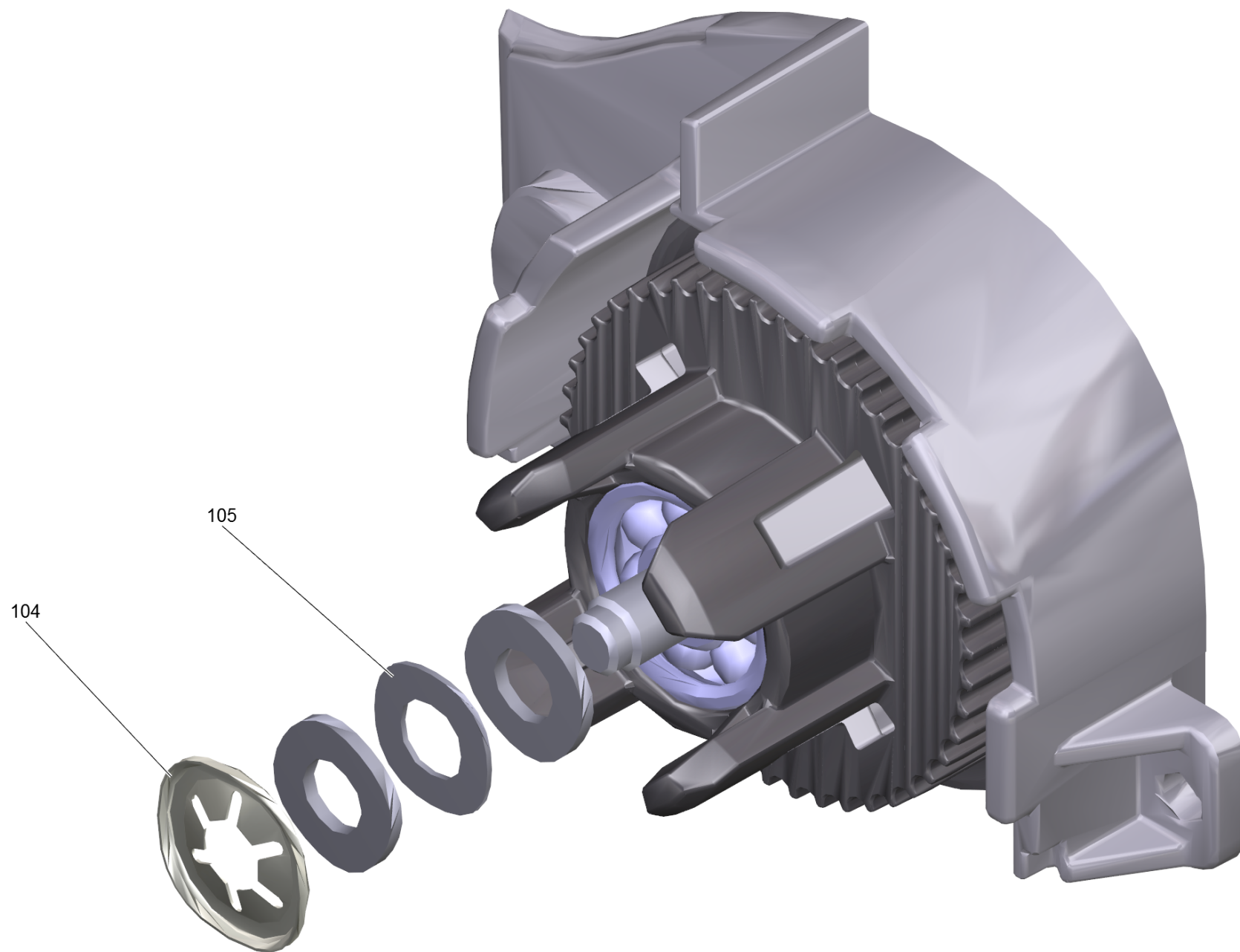
<b>POS</b>	<b>Article no.</b>	<b>Description</b>	<b>Quantity</b>	<b>Unit</b>
999	9.412-178.0	Axle	2.000	ST
2	6.343-119.0	Lock washer	2.000	ST



5 Adjusting wheel complete (4.515-316.0)

---

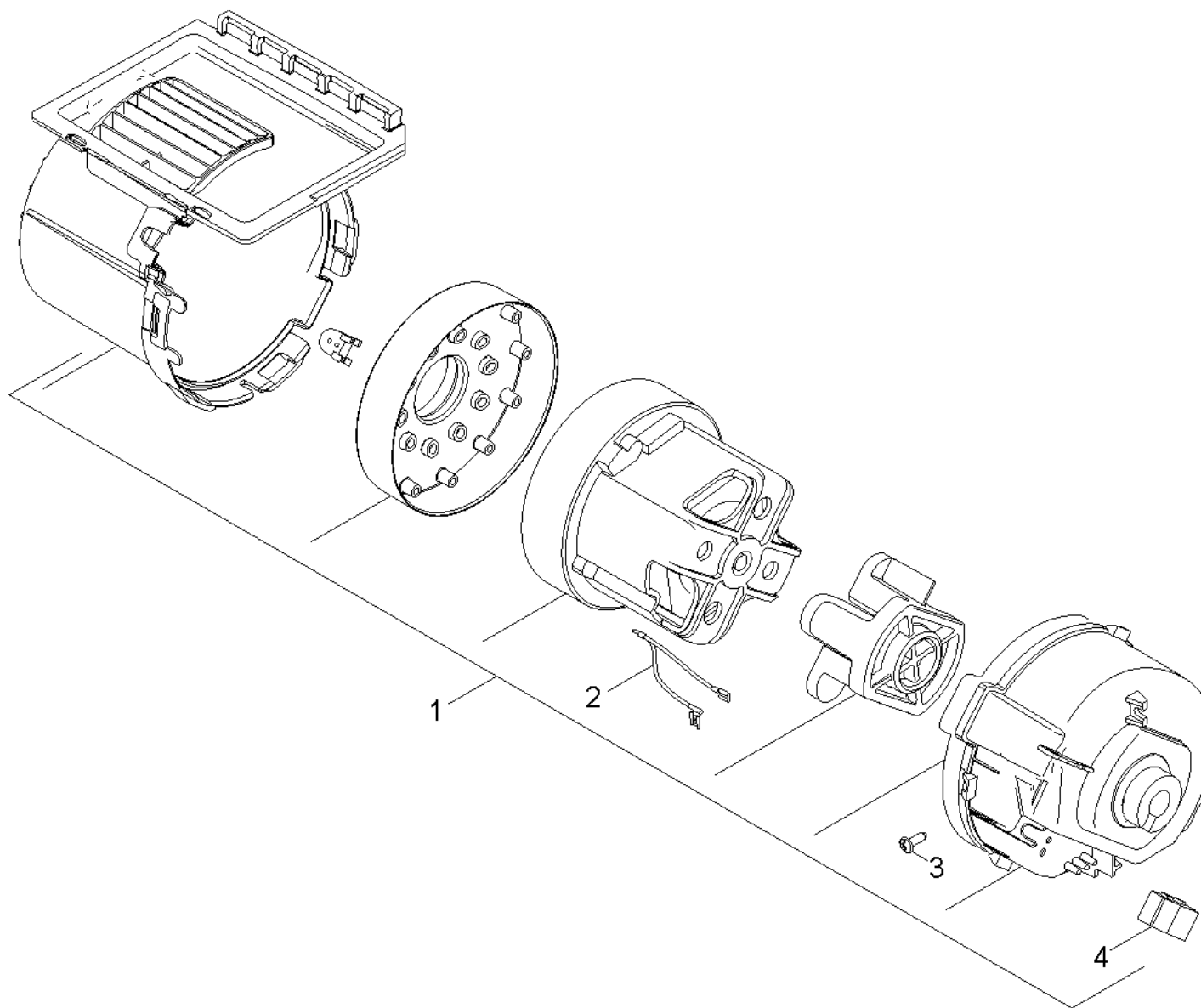
POS	Article no.	Description	Quantity	Unit
4	5.515-069.0	Wheel	1.000	ST



15 Covering cap complete belt (4.063-774.0)

---

<b>POS</b>	<b>Article no.</b>	<b>Description</b>	<b>Quantity</b>	<b>Unit</b>
104	6.343-119.0	Lock washer	1.000	ST
105	7.312-305.0	Spring washer B 6-FST-A2E DIN 137	1.000	ST

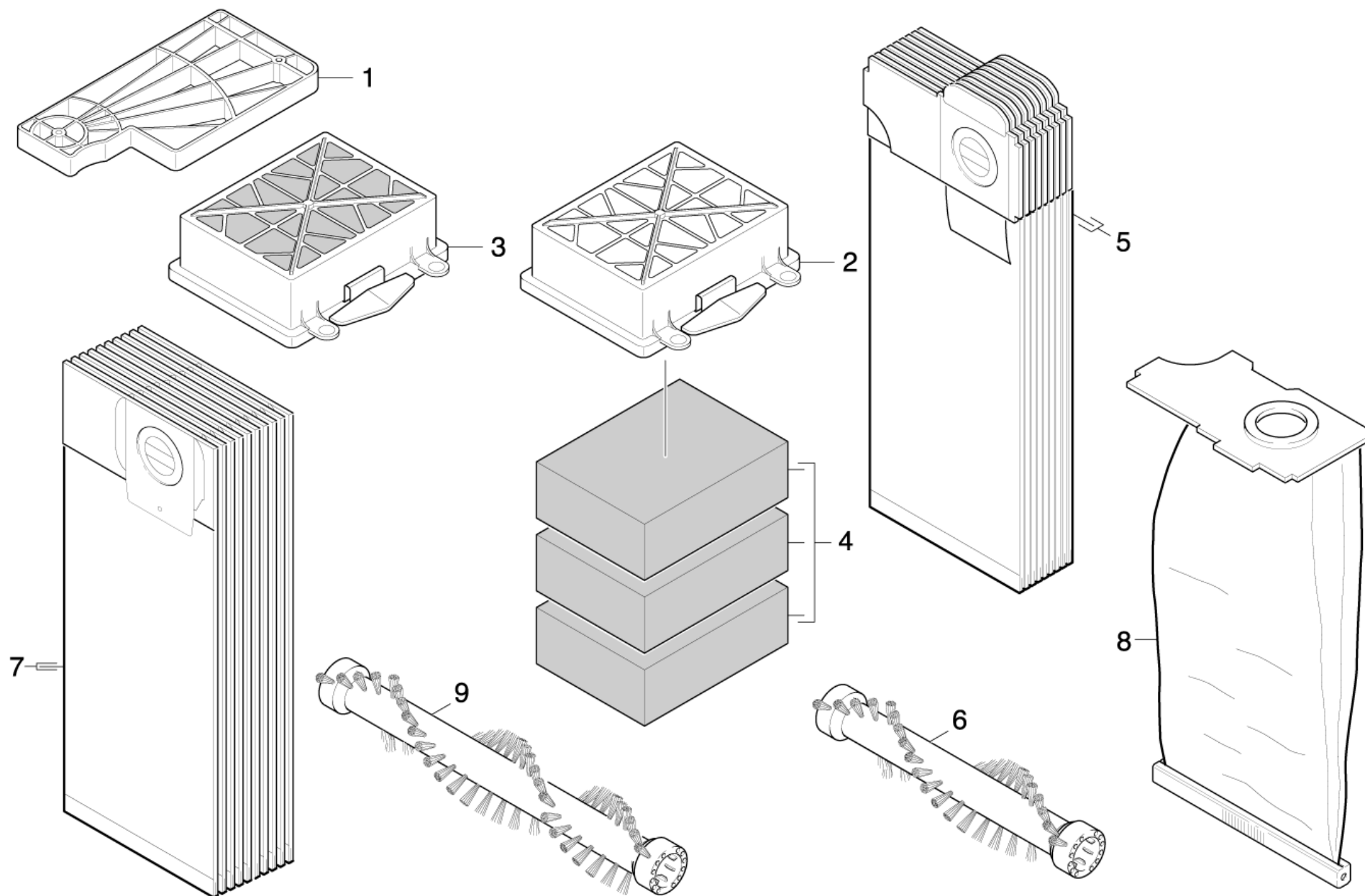




### 30 Vacuum motor

---

<b>POS</b>	<b>Article no.</b>	<b>Description</b>	<b>Quantity</b>	<b>Unit</b>	<b>Serial number from</b>	<b>Serial number to</b>
2	6.649-760.0	Cable vacuum motor	2.000	ST		
1	4.060-793.0	Motor housing complete	1.000	ST		30000
1	4.060-035.0	Motor housing complete	1.000	ST	30001	
3	7.303-106.0	Screw 4x12 -10.9-R2R (IN6RD)	4.000	ST		
4	6.643-551.0	Strip terminal	1.000	ST		



## 40 Accessories

POS	Article no.	Description	Quantity	Unit	Remark	Foot note text
8	6.904-301.0	Filter bag cloth	1.000	ST		
7	6.904-305.0	Filter bag fleece 10 Stk.	1.000	ST		
5	6.904-294.0	FILTER BAGS 10 PC	1.000	ST		
3	2.889-286.0	Filter complete packaged HEPA	1.000	ST		
2	5.731-614.0	Filter frame grey	1.000	ST		
1	5.731-611.0	Filter motor protecting	1.000	ST		
4	4.414-015.0	Filter sponge Kärcher 3St.	1.000	ST		
6	4.762-487.0	Roller brush antistatic	1.000	ST	CV 38/2	ANTISTATIC
9	4.762-489.0	Roller brush black	1.000	ST	CV 48/2	BLACK
9	4.762-488.0	Roller brush red	1.000	ST	CV 48/2	RED
6	6.906-644.0	Roller brush red	1.000	ST	CV 38/2	RED