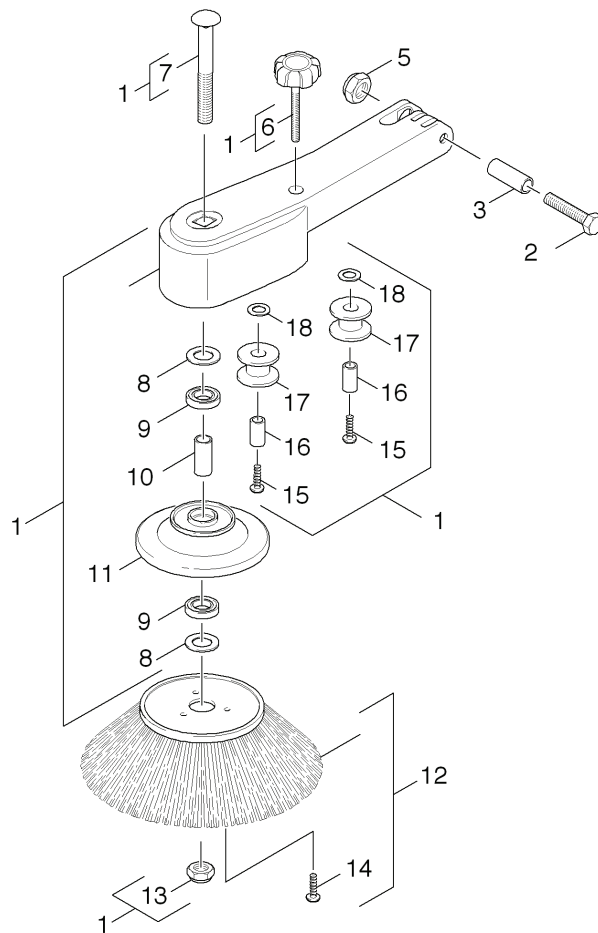


20 Side broom

Home and Garden \ Sweepers \ Manually operated \ K 970 \ Spare parts list K 970 \ Side broom

KÄRCHER



20 Side broom

Home and Garden \ Sweepers \ Manually operated \ K 970 \ Spare parts list K 970 \ Side broom



POS	Article no.	Description	Quantity	Unit
1	4.802-034.0	Arm side broom complete	1.000	ST
9	6.401-363.0	Ball bearing	2.000	ST
17	6.966-007.0	Deflection pulley	1.000	ZSA
11	6.966-002.0	Flange	1.000	ST
6	4.321-195.0	Handle completely	1.000	ST
2	7.304-404.0	Hexagonal head screw M8x40-8.8-A2E ISO	1.000	ST
5	7.311-427.0	Hexagon nut M8 -04-A2E ISO 10511	1.000	ST
13	7.311-511.0	Hexagon nut M10-8-A2E ISO 7040	1.000	ST
7	7.303-201.0	Saucer-head screw M10x110-ST-A0P DIN 60	1.000	ST
15	7.303-114.0	Screw 6 x 35-ST-10.9-R2R (IN6RD)	2.000	ST
14	7.303-112.0	Screw 6x20 -10.9-R2R (In6Rd)	3.000	ST
3	6.966-006.0	Sleeve	1.000	ST
10	6.966-020.0	Spacer sleeve 12x0,8x31	1.000	ST
12	2.884-935.0	Spare parts set side broom	1.000	ST
16	6.966-009.0	Tube 10x1,5x16	2.000	ST
18	7.312-276.0	Washer 6 -200HV-A2E ISO7093-1	2.000	ST
8	7.312-005.0	Washer 10-200HV-A3E ISO 7090	2.000	ST