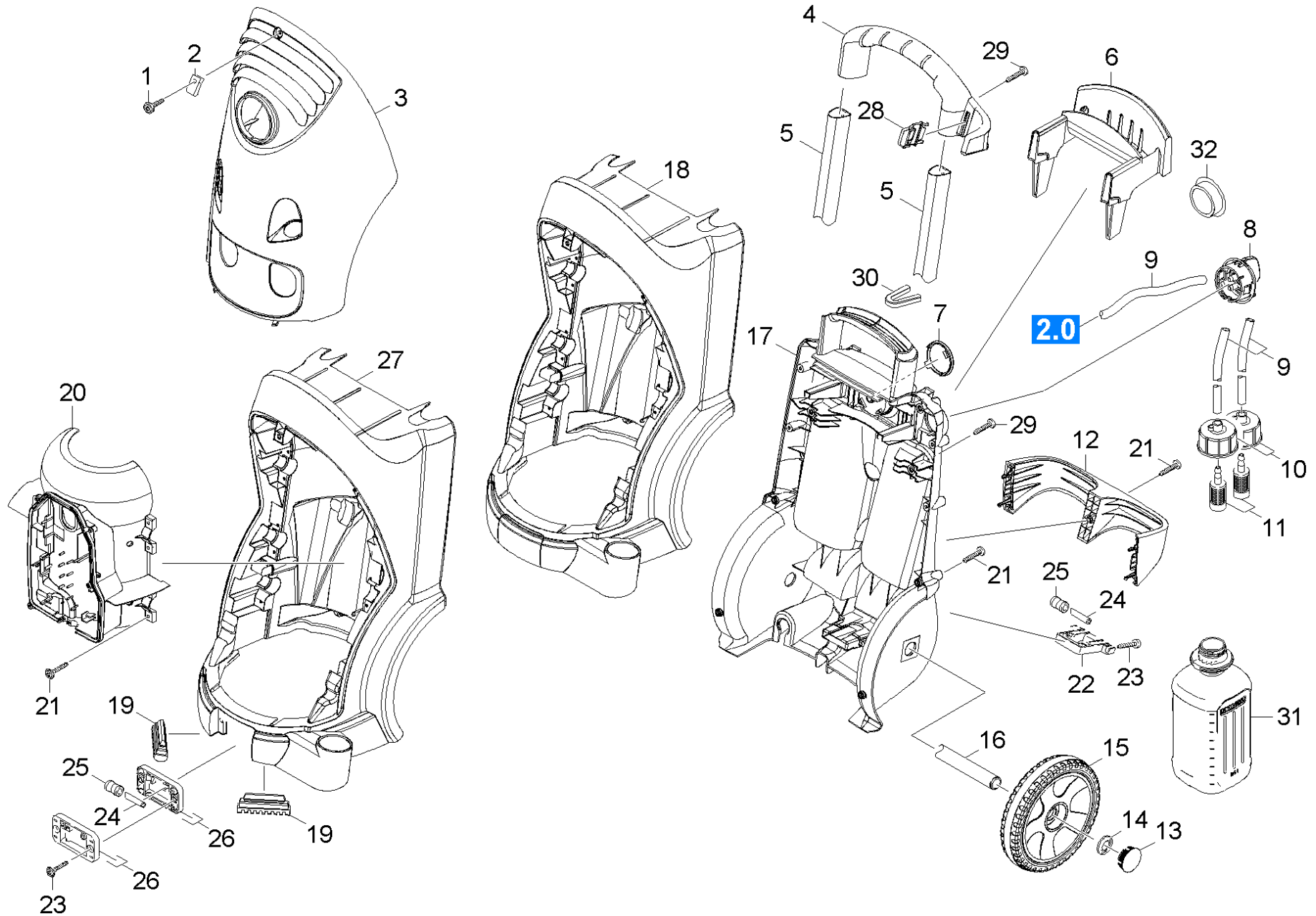


11 Housing

Professional \ High pressure cleaner cold water \ Electric motor \ HD 7/18 - 4MX *EU \ Spare parts list HD 7/18-4M \ Housing \ Housing



11 Housing

Professional \ High pressure cleaner cold water \ Electric motor \ HD 7/18 - 4MX *EU \ Spare parts list HD 7/18-4M \ Housing \ Housing



| POS | Article no. | Description | Quantity | Unit | Foot note text |
|-----|--|-----------------------------------|----------|------|-----------------------|
| 1 | 6.304-099.0 | Saucer-head screw M 6x 18-4.8-R2R | 1.000 | ST | |
| 2 | 6.310-053.0 | Putting nut | 1.000 | ST | |
| 3 | 4.069-018.0 | Cover HD Basis/Mittelklasse | 1.000 | ST | |
| 4 | 5.321-751.0 | Handhold | 1.000 | ST | |
| 5 | 5.107-262.0 | Bar | 2.000 | ST | |
| 6 | 5.044-735.0 | Holder | 1.000 | ST | |
| 7 | 5.032-475.0 | Covering cap cover | 1.000 | ST | |
| 8 | 4.580-645.0 | Proportioning valve chemistry | 1.000 | ST | |
| | Item text1: 1.524-200.0 /-201.0 /-208.0 /-210.0 | | | | |
| | Item text2: /-211.0 | | | | |
| 9 | 6.388-216.0 | Hose DN 5 | 1.000 | M | TO ORDER AS CUT GOODS |
| | Item text1: 1.524-200.0 /-201.0 /-208.0 /-210.0 | | | | |
| | Item text2: /-211.0 | | | | |
| 10 | 4.060-866.0 | Cover cleaning agents complete | 2.000 | ST | |
| | Item text1: 1.524-200.0 /-201.0 /-208.0 /-210.0 | | | | |
| | Item text2: /-211.0 | | | | |
| 11 | 5.731-652.0 | Filter with weight | 2.000 | ST | |
| | Item text1: 1.524-200.0 /-201.0 /-208.0 /-210.0 | | | | |
| | Item text2: /-211.0 | | | | |
| 12 | 5.032-747.0 | Retaining bracket | 1.000 | ST | |
| 13 | 5.392-038.0 | Wheel cap | 2.000 | ST | |
| 14 | 6.343-217.0 | Clamping washer D25 | 2.000 | ST | |
| 15 | 4.515-255.0 | Wheel | 1.000 | ST | SET OF 2 PIECES |
| 16 | 5.105-413.0 | Axle | 1.000 | ST | |
| 17 | 5.050-431.0 | Frame rear panel | 1.000 | ST | |
| 18 | 5.050-258.3 | Frame front part | 1.000 | ST | |
| | Item text1: 1.524-200.0 / -207.0 /-208.0 | | | | |
| 19 | 5.057-062.0 | Support | 2.000 | ST | |
| 20 | 5.692-075.0 | Air circulation | 1.000 | ST | |
| 21 | 7.303-108.0 | Screw 5x20 -10.9-R2R (In6Rd) | 19.000 | ST | |
| 22 | 5.044-647.0 | Holder roller rear | 1.000 | ST | |
| | Item text1: 1.524-201.0 / -210.0 / -211.0 | | | | |
| 23 | 5.044-216.0 | Holder | 1.000 | ST | |

11 Housing

Professional \ High pressure cleaner cold water \ Electric motor \ HD 7/18 - 4MX *EU \ Spare parts list HD 7/18-4M \ Housing \ Housing

KÄRCHER

| POS | Article no. | Description | Quantity | Unit | Foot note text |
|-----|---|-----------------------------|----------|------|----------------|
| | Item text1: 1.524-201.0 / -210.0 / -211.0 | | | | |
| 24 | 5.128-511.0 | Axle | 4.000 | ST | |
| | Item text1: 1.524-201.0 / -210.0 / -211.0 | | | | |
| 25 | 5.515-191.0 | Roller | 4.000 | ST | |
| | Item text1: 1.524-201.0 / -210.0 / -211.0 | | | | |
| 26 | 5.044-646.0 | Holder roller front | 2.000 | ST | |
| | Item text1: 1.524-201.0 / -210.0 / -211.0 | | | | |
| 27 | 5.050-252.0 | Frame front part | 1.000 | ST | |
| | Item text1: 1.524-201.0 / -210.0 / -211.0 | | | | |
| 28 | 5.044-216.0 | Holder | 1.000 | ST | |
| 29 | 7.303-048.0 | Screw M6x20 -St-R3R (In6Rd) | 8.000 | ST | |
| 30 | 5.032-782.0 | Moulded part | 1.000 | ST | |
| | Item text1: 1.524-201.0 / -210.0 / -211.0 | | | | |
| 31 | 6.394-491.0 | Bottle PE 2,5 L | 2.000 | ZST | |
| | Item text1: 1.524-200.0 / -201.0 / -208.0 / -210.0 | | | | |
| | Item text2: /-211.0 | | | | |
| 32 | 5.368-016.0 | Cap | 1.000 | ST | |