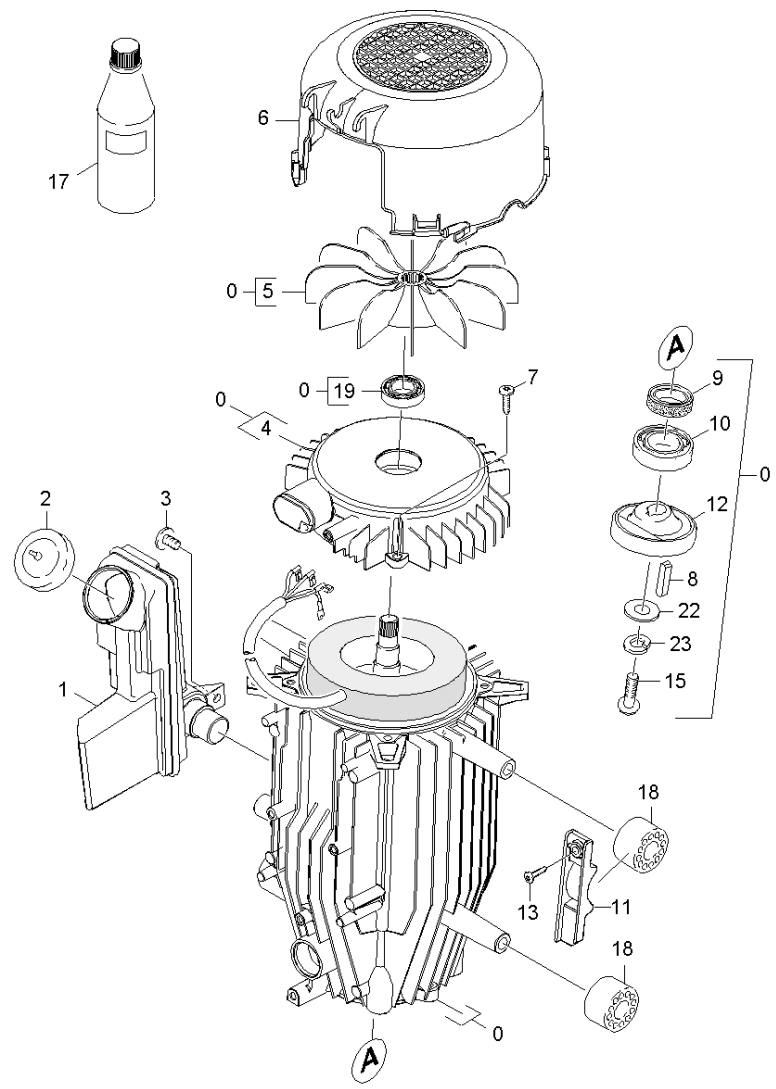


# 30 Motor

Overview technical documents/Professional/High pressure cleaner cold water/Electric motor/HD 7/10 C Food \*JP (1.151-618.0)/Spare parts list HD 7/10 C FOOD \*JP/30 Motor



**30 Motor**

Overview technical documents/Professional/High pressure cleaner cold water/Electric motor/HD 7/10 C Food \*JP (1.151-618.0)/Spare parts list HD 7/10 C FOOD \*JP/30 Motor

Rez.daļas/nodil.pakļ.daļas	Poz.	Materiāla Nr.	Nosaukums	Daudzums	Pārdoš. vienība	no sēr. Nr..	līdz sēr. Nr.
	0	4.623-850.0	Motor complete only for replacement	1.000	ST		
X-X	1	5.070-639.0	Eļļas tvertne	1.000	ST	0000000000	0000000000
X-X	2	5.064-457.0	Cover qusty grey SAE 90	1.000	ST	0000000000	0000000000
	3	6.303-153.0	Screw M5x15-ST-R2R (IN6RD)	1.000	ST	0000000000	0000000000
X-X	4	5.094-148.0	Gultņa vāks B	1.000	ST	0000000000	0000000000
X-X	5	5.600-060.0	Darbrats	1.000	ST	0000000000	0000000000
	6	5.692-081.0	Gaisa cirkulācija	1.000	ST	0000000000	0000000000
	7	6.303-320.0	Screw M 5x 20-St-R2R	4.000	ST	0000000000	0000000000
	8	7.318-003.0	Parallel key 5X 5X 18-C45R DIN 6885	1.000	ST		
X-X	9	7.367-001.0	Vārpstas blīvslēgs A24x37x7 -NBR DI	1.000	ST	0000000000	0000000000
X	10	6.401-427.0	Angular contact ball bearing	1.000	ST	0000000000	0000000000
X-X	11	5.802-288.0	Mounting part	2.000	ST	0000000000	0000000000
	12	4.120-222.0	Wobble plate complete only for replaceme	1.000	ST		
X-X	13	7.303-108.0	Skrūve 5x20 -10.9-R2R (In6Rd)	2.000	ST	0000000000	0000000000
X	15	7.306-042.0	Cylinder head screw M8x25 -8.8-A2E ISO4	1.000	ST	0000000000	0000000000
X-X	17	6.288-016.0	Transmisijas eļļa	1.000	ST	0000000000	0000000000
X	18	5.767-005.0	Gumijas buferis	4.000	ST	0000000000	0000000000
X-X	19	7.401-128.0	Lod.gultnis 6202-2RS -Wälzl.St DIN 625	1.000	ST	0000000000	0000000000
X	22	7.312-277.0	Washer 8-200HV-A2E ISO7093-1	1.000	ST	0000000000	0000000000
X	23	7.313-004.0	Spring washer B 8-FSt-A3E DIN 127	1.000	ST	0000000000	0000000000