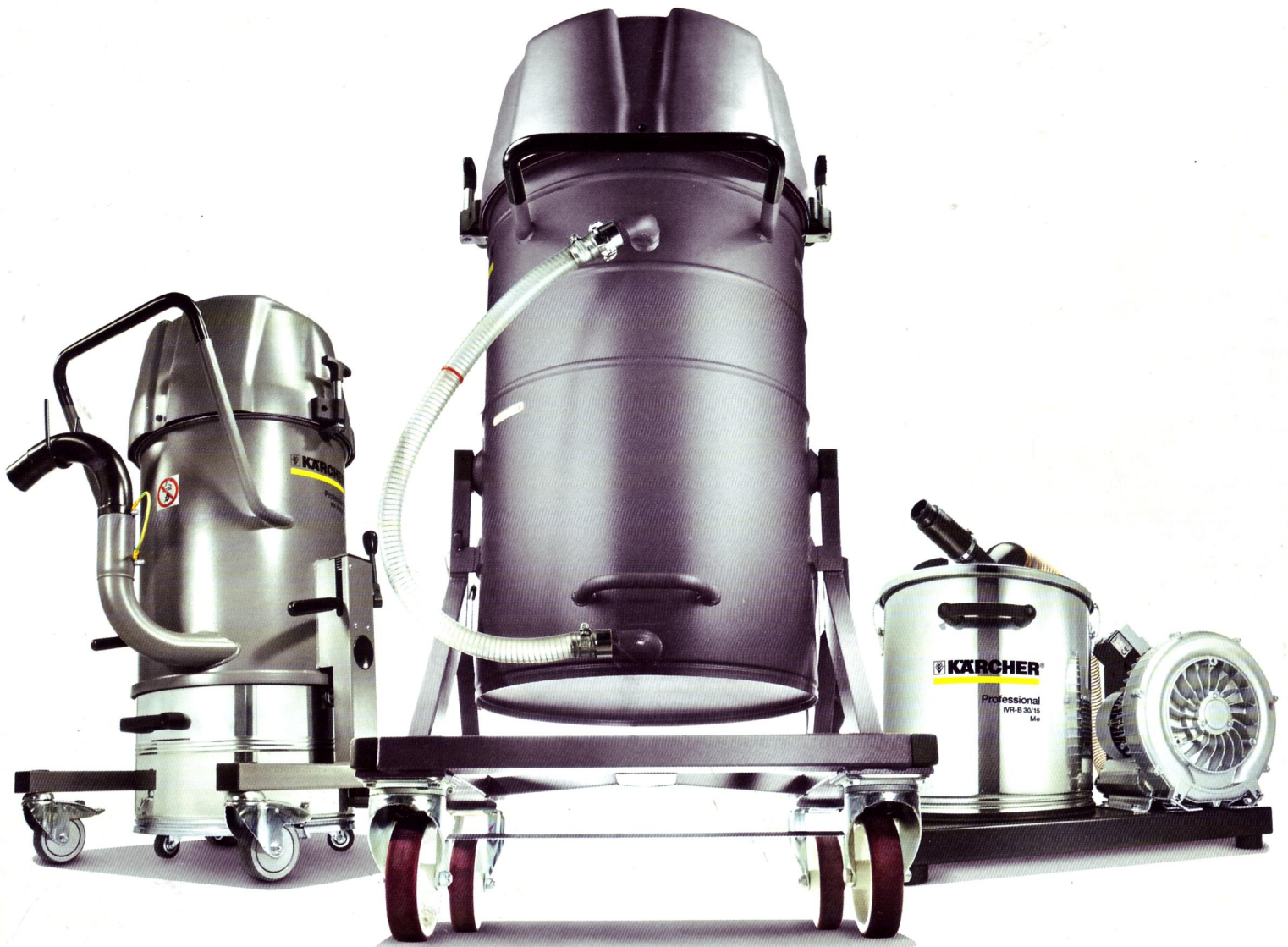




makes a difference



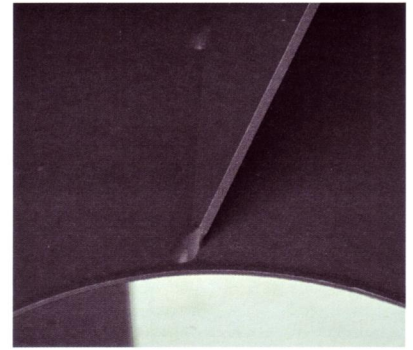
IVR INDUSTRIAL VACUUMS.

Robust machines for metalworking and heavy industry.



WHEN THE GOING GETS TOUGH: IVR.

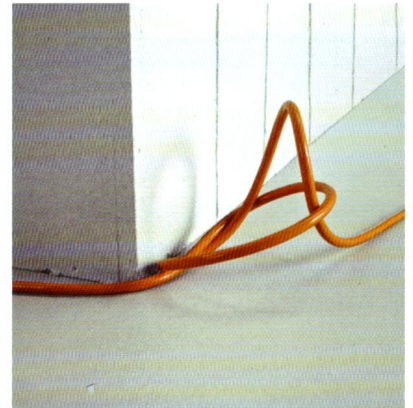
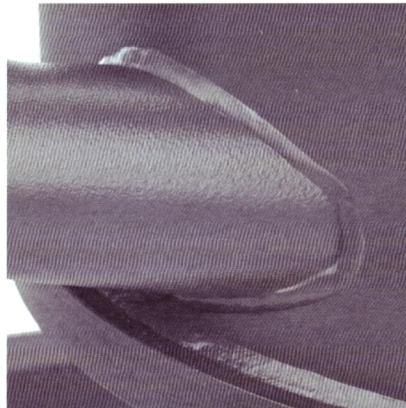
Metalworking generates debris that pushes vacuum systems to their limits: sharp-edged metal shavings and dust, aggressive coolants and lubricants. Only very robust industrial vacuums are capable of vacuuming these types of substances regularly, reliably and in a way that allows the waste to be recycled. Enter the IVR from Kärcher.



Extra strong machine casing
1.25 mm machine casing (before painting) – and even thicker where necessary.

Resilience that lasts for years
Precisely welded connections guarantee a high level of durability for heavy-duty industrial use.

Highly flexible cord
The cord remains undamaged, even when under extreme strain e.g. kinking.

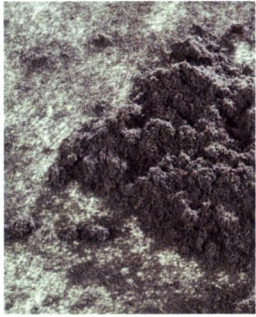


Robust, robust, robust. And perfectly equipped for your tasks. The three IVR model series offer the ideal machines for vacuuming and separating solids and liquids in the metal processing industry.

With machine casing made from strong sheet steel 1.25 mm thick (plus protective coating) or stainless steel, IVR machines are extremely hard-wearing. Since most connections are welded, this maximally increases

the robustness of the machines against abrasive substances, impacts, aggressive media and demanding operating conditions. All IVR machines are equipped with kink-resistant flexi-cords, which are as wear-resistant and oil-resistant as the smooth-running machine wheels from the attachment kit. All IVR machines are systematically designed and equipped for the highest level of robustness. Because robustness is the basis of durability, and therefore cost-effectiveness.

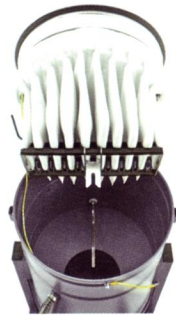
IVR



Efficient filter technology makes the IVR ideal for vacuuming non-explosive dusts and fine suction waste.



Large pocket filter with inner grille for long periods of vacuuming without loss of suction power. Filter area 1.4 m²/1.75 m², dust class M.



Long filter service life thanks to the baffle plate for protecting the filter. Efficient filter cleaning with good shock transfer via the inner grille.



Simple, time-saving machine handling thanks to clear control elements.



Ergonomic set-down trolley for safe and user-friendly emptying of the waste container.

IVR-L



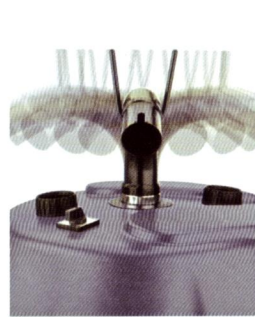
Reliable machines for vacuuming metal shavings and/or liquids like coolants, emulsion drilling fluids and oil.



The swarf basket attachment kit separates solids and liquids during the vacuuming process which can then be recirculated or recycled.



As overflow protection when vacuuming liquids, for example when changing emulsion, the float attachment kit with suction flow interrupter can be retrofitted.



The central suction duct is non-abrasive and ensures time-saving operation thanks to its flexible 360° working radius.



The transparent emptying hose enables easy emptying and allows the user to check the fill level without interruptions.

IVR-B



IVR-B machines are ideal for vacuuming swarf, punchings, granulate and other coarse suction waste in confined spaces.



The compact, low design of the IVR-B means that it can be used in confined spaces, for example in recesses, production cells and under workbenches.



The simple design with robust, durable components allows intuitive and time-saving operation of all IVR-B machines.



Additional sound-dampening ensures whisper-quiet operation which supports health and safety in the workplace.



Compact cartridge filter with 0.7 m² filter area for effective motor protection and exhaust filter for vacuuming coarse material.

Application overview for Kärcher industrial vacuums

Coarse, dry ø 2-3 h/day ø up to 24 h/day		Fine, dry ø 2-3 h/day ø up to 24 h/day		Explosive dusts ø 2-3 h/day ø up to 24 h/day		Liquid ø 2-3 h/day ø up to 24 h/day	
--	--	--	--	--	--	---	--

Automotive industry / Mechanical and system engineering / Toolmaking / Metalworking

Metal shavings from machining processes (milling, drilling, punching)		Abrasive dust from metal processing		Abrasive paint dust		Coolants from metal processing	
---	--	-------------------------------------	--	---------------------	--	--------------------------------	--

IVR-L 40 IVR-L 65 IVR-L 100/24-2 IVR-L 120	IVR-L 100/30 IVR-B	IVR 35	IVR 40 IVR 50 IVR 100		IVC 60 Z22 IV 60 B1 (Z22) IV 100 B1 (Z22)	IVR-L 40 IVR-L 65 IVR-L 100 IVR-L 120	IVR-L 100/30
---	-----------------------	--------	-----------------------------	--	---	--	--------------

Metallurgy and forming

Slag							
IVR-L 40 IVR-L 65 IVR-L 100/24-2 IVR-L 120	IVR-L 100/30 IVR-B						

Coking and mineral oil processing

Coal fragments							
IVR-L 40 IVR-L 65 IVR-L 100/24-2 IVR-L 120	IVR-L 100/30 IVR-B						

Glass and stone processing

Broken glass, gravel, grit		Plaster, cement, concrete, abrasive glass dust					
IVC 60/24-2 Ap IVR-L 40 IVR-L 65 IVR-L 100/24-2 IVR-L 120	IVC 60/30 Ap IVR-L 100/30 IVR-B	IVC Tact ² IVR 35	IVR 60/30 Tact ² IVR 40 IVR 50 IVR 100 IV 100				

Paper production / Print media production

Cardboard pieces		Cellulose fibres		Paper dust		Dyes, inks	
IVC 60/24-2 Ap	IVC 60/12-1 IVC 60/30 Ap	IVR 60/24-2 Tact ²	IVC 60/12-1 Tact IVR 60/30 Tact ²		IVC 60/30 Ap M Z22 IV 60 M B1 (Z22) IV 100 M B1 (Z22)	IVC 60/24-2 IVL 50/24-2 IVR-L 100 IVR-L 120	IVC 60/30 IVR-L 100/30

Food industry

Food fragments on conveyors, e.g. biscuit crumbs, chocolate fragments				Flour, sugar, coffee, food powders		Food oils, drinks	
IVC 60/24-2 Ap	IVC 60/12-1 IVC 60/30 Ap				IVC 60 Z22 IV 60 B1 (Z22) IV 100 B1 (Z22)	IVC 60/24-2 IVL 50/24-2 IVR-L 100 Me IVR-L 120 Me	IVC 60/30

Starch and tobacco production

		Tobacco dust		Starch			
		IVR 60/24-2 Tact ²	IVC 60/12-1 Tact IVR 60/30 Tact ²		IVC 60 Z22 IV 60 B1 (Z22) IV 100 B1 (Z22)		

Rubber and plastic production

Plastic granulate, plastic moulding residues		Plastic dust				Water	
IVC 60/24-2 Ap	IVC 60/12-1 IVC 60/30 Ap	IVR 60/24-2 Tact ² IVR 35 IV 60/24-2 IV 60/36-3	IVC 60/12-1 IVR 60/30 IVR 40 IVR 50 IVR 100 IV 60/30 IV 100			IVC 60/24-2 IVL 50/24-2 IVR-L 100 Me IVR-L 120 Me	IVC 60/30

Wood processing / Furniture production

Coarse wood shavings and small wood fragments				Wood dust			
IVC 60/24-2 Ap	IVC 60/30 Ap					IVC 60 Z22 IV 60 B1 (Z22) IV 100 B1 (Z22)	

Chemical industry

Granulates		Plastic dust		Fertilisers, powder dyes			
IVC 60/24-2 Ap	IVC 60/12-1 IVC 60/30 Ap	IVR 60/24-2 Tact ² IVR 35 IV 60/24-2 IV 60/36-3	IVC 60/12-1 IVR 60/30 IVR 40 IVR 50 IVR 100 IV 60/30 IV 100			IVC 60 Z22 IV 60 B1 (Z22) IV 100 B1 (Z22)	

Pharmaceutical industry

Medicinal agents like vitamins, oestrogen, acids							
						IVC 60 Z22 IV 60 B1 (Z22) IV 100 B1 (Z22)	