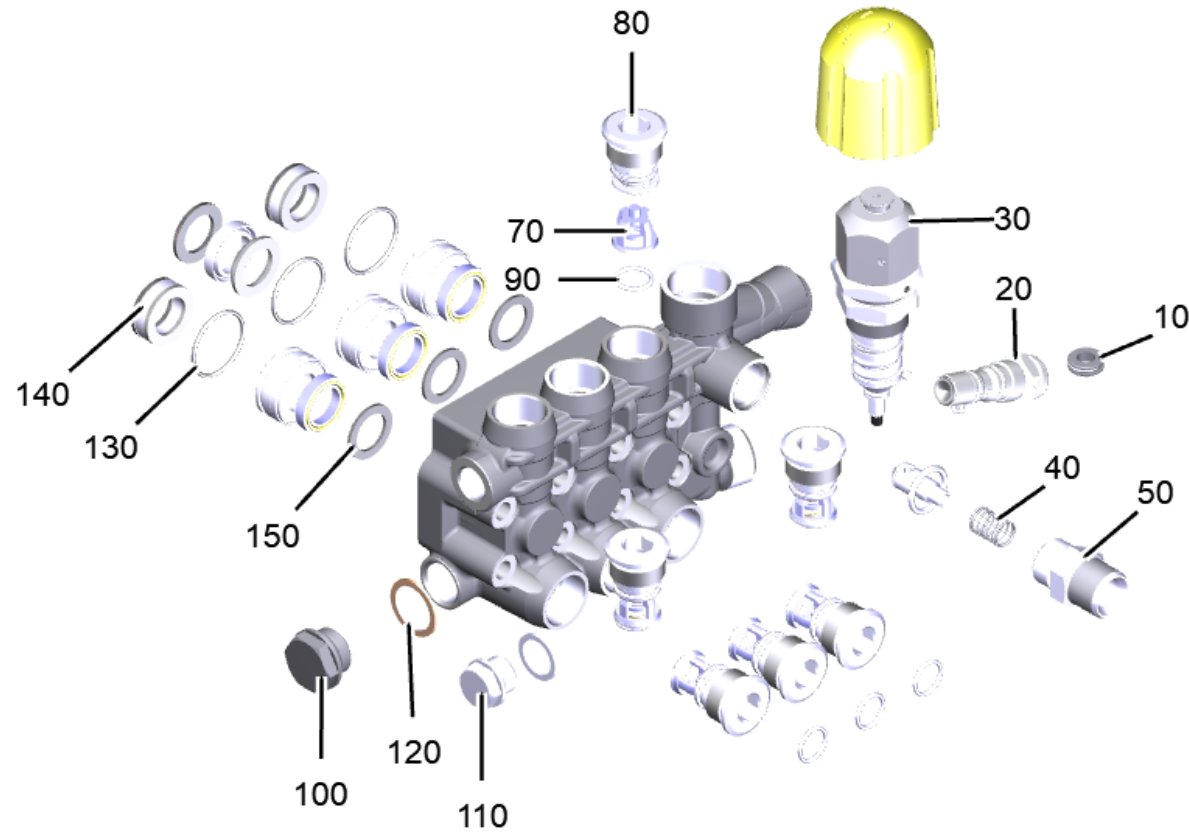


# 340 Cylinder head pressure switch station 25MPa

Professional \ High pressure cleaner hotwater \ Electric motor \ HDS 9/20-4 Classic \*KAP \ Cylinder head pressure switch station 25MPa



## 340 Cylinder head pressure switch station 25MPa

Professional \ High pressure cleaner hotwater \ Electric motor \ HDS 9/20-4 Classic \*KAP \ Cylinder head pressure switch station 25MPa



POS	Article no.	Description	Quantity	Unit
100	9.761-067.0	Drain plug G 1/2"	1	PC
110	9.761-057.0	Drain plug G 3/8"	1	PC
30	6.101-265.0	Excess-current with valve seat	1	PC
180	9.761-237.0	Handle	1	PC
140	9.761-106.0	HD seal D 18	3	PC
	<b>Item text1:</b> replaced by 6.365-493.3			
150	9.761-108.0	ND seal D 18	3	PC
	<b>Item text1:</b> replaced by 6.365-495.3			
90	9.760-107.0	O-Ring seal 16 x 2 - NBR 80 (9.081-406)	6	PC
130	9.761-107.0	O-Ring seal 28.30 x 1.78	3	PC
60	9.761-104.0	O-Ring seal D 15.54x2.62	6	PC
40	9.761-064.0	Pressure spring	1	PC
20	9.751-030.0	Pressure switch complete only for replac	1	PC
50	9.761-052.0	Screw plug	1	PC
120	9.761-105.0	Seal G 1/2"	1	PC
140	6.365-493.0	Set of gaskets high-pressure W1	3	PC
	<b>Item text1:</b> replaced by 6.365-493.3			
140	6.365-493.3	Set of gaskets high-pressure W1	3	PC
	<b>Item text1:</b> successor of 9.761-106.0			
150	6.365-495.3	Set of gaskets low-pressure W2	3	PC
	<b>Item text1:</b> successor of 9.761-108.0			
70	9.751-004.0	Valve complete	6	PC
80	9.761-319.0	Valve screw inside hexagon M24x1.5	6	PC
10	9.751-028.0	Valve seat complete only for replacement	1	PC