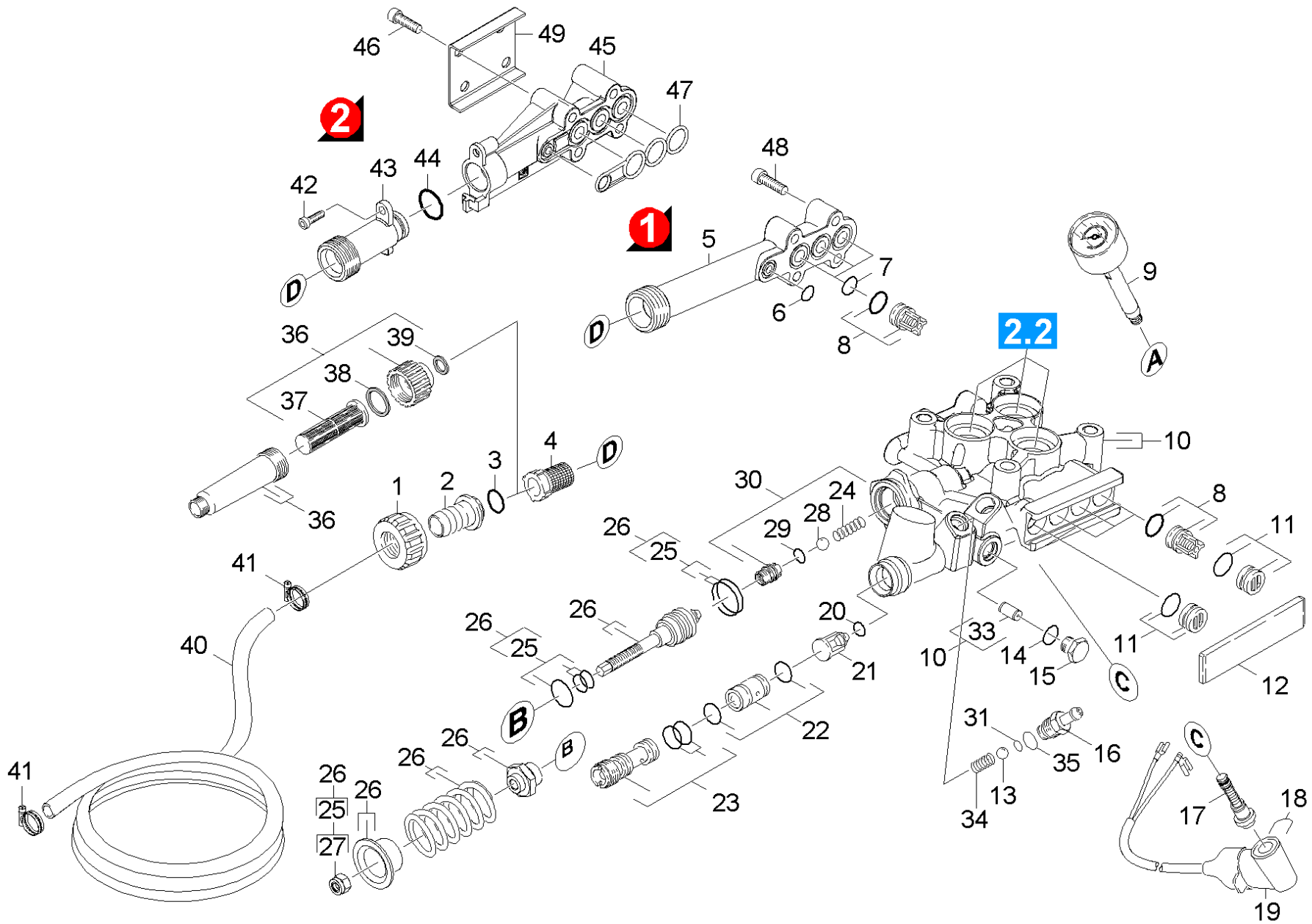


# 21 Cylinder head

Professional \ High pressure cleaner cold water \ Electric motor \ HD 7/18 C \*EU \ Spare parts list HD 6/15, HD 7/18 \ Pump set \ Cylinder head



## 21 Cylinder head

Professional \ High pressure cleaner cold water \ Electric motor \ HD 7/18 C \*EU \ Spare parts list HD 6/15, HD 7/18 \ Pump set \ Cylinder head



POS	Article no.	Description	Quantity	Unit
1	5.310-065.0	Nut	1	PC
	<b>Item text1:</b> 1.151-601.0 /-602.0 /-603.0 /-604.0 /			
	<b>Item text2:</b> -607.0 /-608.0 /-612.0 /			
35	6.362-113.0	O-Ring seal 6,0 x 2,0 NBR 70	1	PC
24	5.332-999.0	Helical spring	1	PC
25	2.884-551.0	Spare part set	1	PC
26	2.884-550.0	Spare part set overflow valve	1	PC
27	7.311-510.0	Hexagon nut M 8-8-A2E ISO 7040	1	PC
28	7.401-907.0	Sphere 3/8 G200-1.4301 DIN 5401	1	PC
29	6.362-858.0	O-Ring seal 11,0 X 1,5	1	PC
30	4.481-226.0	Valve seat complete	1	PC
31	6.363-597.0	O-Ring seal 5,28 x 1,78	1	PC
33	5.111-046.0	Sleeve cylinder head	1	PC
	<b>Item text1:</b> 1.151-601.0 /-602.0 /-603.0 /-604.0 /			
	<b>Item text2:</b> -607.0 /-608.0 /-612.0			
34	5.332-258.0	Helical spring	1	PC
36	4.730-127.0	Water filter	1	PC
	<b>Item text1:</b> 1.151-607.0 / -608.0			
23	4.769-034.0	Nozzle insert only for replacement	1	PC
37	5.731-634.0	Water filter	1	PC
	<b>Item text1:</b> 1.151-607.0 / -608.0			
38	5.363-336.0	Seal	1	PC
	<b>Item text1:</b> 1.151-607.0 / -608.0			
39	5.363-545.0	Seal	1	PC
	<b>Item text1:</b> 1.151-607.0 / -608.0			
40	6.390-492.0	Hose intake DN19	1	PC
	<b>Item text1:</b> 1.151-605.0 / -606.0			
42	7.303-108.0	Screw 5x20 -10.9-R2R (In6Rd)	1	PC
43	5.402-727.0	Suction nipple	1	PC
44	6.362-481.0	O-Ring seal 14,0 x 2,0 NBR 80	1	PC
45	5.064-230.0	Suction cover	1	PC
47	5.365-284.0	Profile gasket	1	PC
49	5.005-314.0	Plate suction cover	1	PC

## 21 Cylinder head

Professional \ High pressure cleaner cold water \ Electric motor \ HD 7/18 C \*EU \ Spare parts list HD 6/15, HD 7/18 \ Pump set \ Cylinder head

POS	Article no.	Description	Quantity	Unit
1	5.311-071.0	Nut	1	PC
	<b>Item text1:</b> 1.151-605.0 / -606.0			
23	4.769-035.0	Nozzle insert	1	PC
	<b>Item text1:</b> 1.151-605.0 / -606.0			
22	2.884-853.0	Spare part set nozzle insert	1	PC
10	4.551-039.0	Cylinder head only for replacement	1	PC
	<b>Item text1:</b> 1.151-607.0 / -608.0			
2	5.443-229.0	Hose stem	1	PC
	<b>Item text1:</b> 1.151-601.0 /-602.0 /-603.0 /-604.0 /			
	<b>Item text2:</b> -607.0 /-608.0 /-612.0 /			
2	5.443-282.0	Hose stem	1	PC
	<b>Item text1:</b> 1.151-605.0 / -606.0			
3	6.362-078.0	O-Ring seal 13,3x2,4	1	PC
	<b>Item text1:</b> 1.151-601.0 /-602.0 /-603.0 /-604.0 /			
	<b>Item text2:</b> -607.0 /-608.0 /-612.0 /			
3	6.362-395.0	O-Ring seal 14,0 X 1,78-NBR 70	1	PC
	<b>Item text1:</b> 1.151-605.0 / -606.0			
4	6.414-252.0	Strainer	1	PC
5	5.064-150.3	Suction cover for replacement	1	PC
6	6.362-384.0	O-Ring seal 9x1,5 - NBR 70	1	PC
21	4.584-022.0	Valve pin complete	1	PC
10	4.550-836.0	Cylinder head only for replacement	1	PC
	<b>Item text1:</b> 1.151-601.0 /-602.0 /-603.0 /-604.0			
	<b>Item text2:</b> /-605.0 /-606.0 /-612.0			
9	6.421-349.3	Pressure gauge 0-30 MPa	1	PC
100	2.885-017.0	Pump set HD 7/18C	1	PC
	<b>Item text1:</b> 1.151-601.0/-602.0/-603.0 /-604.0			
	<b>Item text2:</b> /-612.0			
12	5.003-062.0	Plate	1	PC
20	6.363-613.0	O-Ring seal 4 x 2 -NBR90	1	PC
19	4.744-201.0	Switch complete	1	PC
18	5.034-494.0	Retaining bracket	1	PC
17	2.883-988.3	Spare parts set control piston for replacement	1	PC

## 21 Cylinder head

Professional \ High pressure cleaner cold water \ Electric motor \ HD 7/18 C \*EU \ Spare parts list HD 6/15, HD 7/18 \ Pump set \ Cylinder head

**KÄRCHER**

POS	Article no.	Description	Quantity	Unit
16	5.443-624.0	Nipple	1	PC
15	5.411-070.0	Screw plug	1	PC
14	6.362-642.0	O-Ring d. 7,65x1,78 -NBR 80	1	PC
13	7.401-908.0	Sphere 7 G300 -1.4301 DIN 5401	1	PC
41	7.373-022.0	Hose clip A-16-27x9 -W2-2 DIN3017	2	PC
	<b>Item text1:</b> 1.151-605.0 / -606.0			
8	2.884-916.0	Valve (3 Stück)	2	PC
7	6.362-533.0	O-Ring seal 14,0 X 1,5-NBR 70	3	PC
46	7.306-129.0	Screw M6x40 -8.8-P2R (In6Rd)	4	PC
48	7.306-105.0	Screw M6x30 -8.8-R3R (In6Rd)	4	PC
48	7.306-105.0	Screw M6x30 -8.8-R3R (In6Rd)	4	PC
11	4.132-007.0	Drain plug only for replacement	4	PC