

## **Spare parts list**

(1.723-600.0) A 2554 Me \*EU

## Table of contents

---

A 2554 Me *EU (1.723-600.0)	3
201 Spare parts list A 2254/2554 ME (5.970-326.0)	4
10 Appliance individual parts	5
3 Cartridge filter WD/SE (6.414-552.0)	7
20 Vacuum motor	9
30 Accessories	11
2 Floor tool complete (2.862-141.0)	13

A 2554 Me \*EU (1.723-600.0)

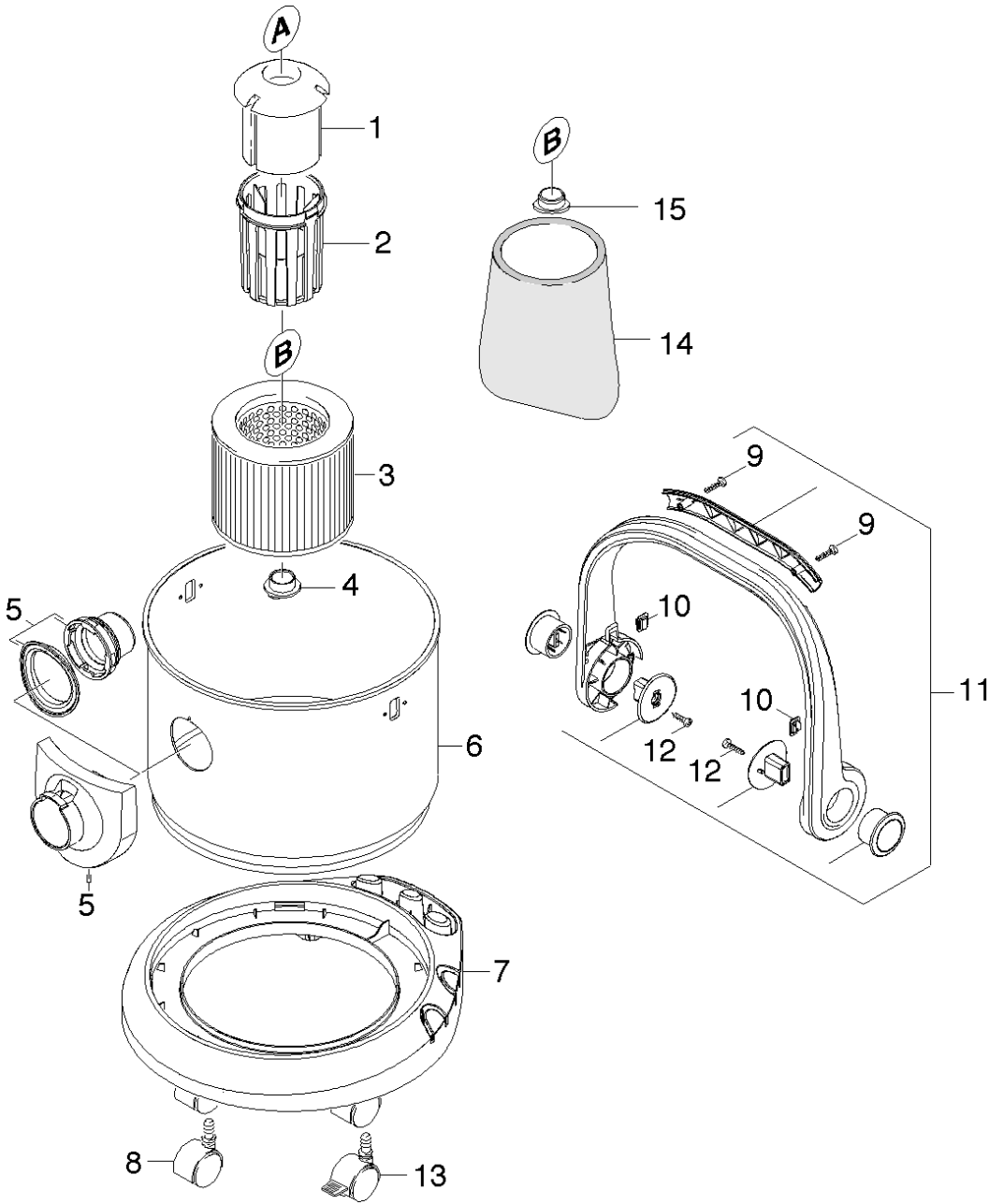
---

<b>POS</b>	<b>Article no.</b>	<b>Description</b>	<b>Quantity</b>	<b>Unit</b>
201	5.970-326.0	Spare parts list A 2254/2554 ME	1	PC

201 Spare parts list A 2254/2554 ME (5.970-326.0)

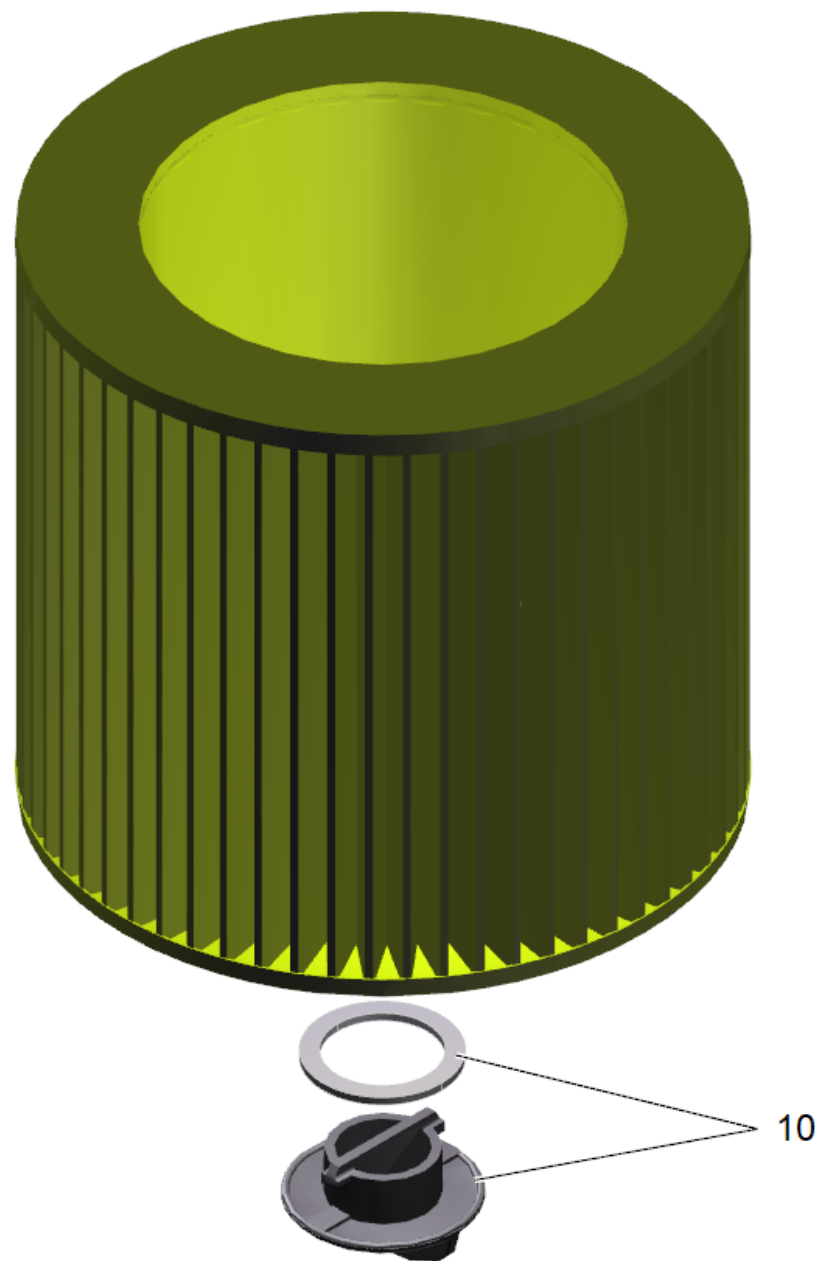
---

<b>POS</b>	<b>Description</b>	<b>Quantity</b>	<b>Unit</b>
10	Appliance individual parts	1	PC
20	Vacuum motor	1	PC
30	Accessories	1	PC



## 10 Appliance individual parts

POS	Article no.	Description	Quantity	Unit	Remark
1	9.037-076.0	Float A2204	1	PC	
2	9.036-992.0	Filtering basket	1	PC	
3	6.414-552.0	Cartridge filter WD/SE	1	PC	
4	4.075-012.0	Closure complete	1	PC	
5	9.001-286.0	Suction connection complete	1	PC	
6	9.039-229.0	Tank 18L	1	PC	18L
	<b>Item text1:</b> / 1.723-300.0 / -301.0 / -302.0 / -303.0				
	<b>Item text2:</b> / -309.0				
6	9.039-230.0	Tank 25L	1	PC	25L
	<b>Item text1:</b> / 1.723-600.0 / -601.0 / -602.0 / -603.0				
7	9.036-977.0	BUMPER FOR INOX TANK	1	PC	
8	6.435-353.0	Castor D 42	4	PC	
9	9.086-184.0	Screw 3x20	2	PC	
10	9.037-029.0	Insert notch	2	PC	
11	9.001-284.0	Handhold complete	1	PC	
12	7.303-098.0	Screw 5x20-10.9-R2R (K-In6Rd)	2	PC	
13	9.037-133.0	Wheel with brake	1	PC	
14	5.731-595.0	Filter	1	PC	
15	9.036-691.0	Covering cap	1	PC	



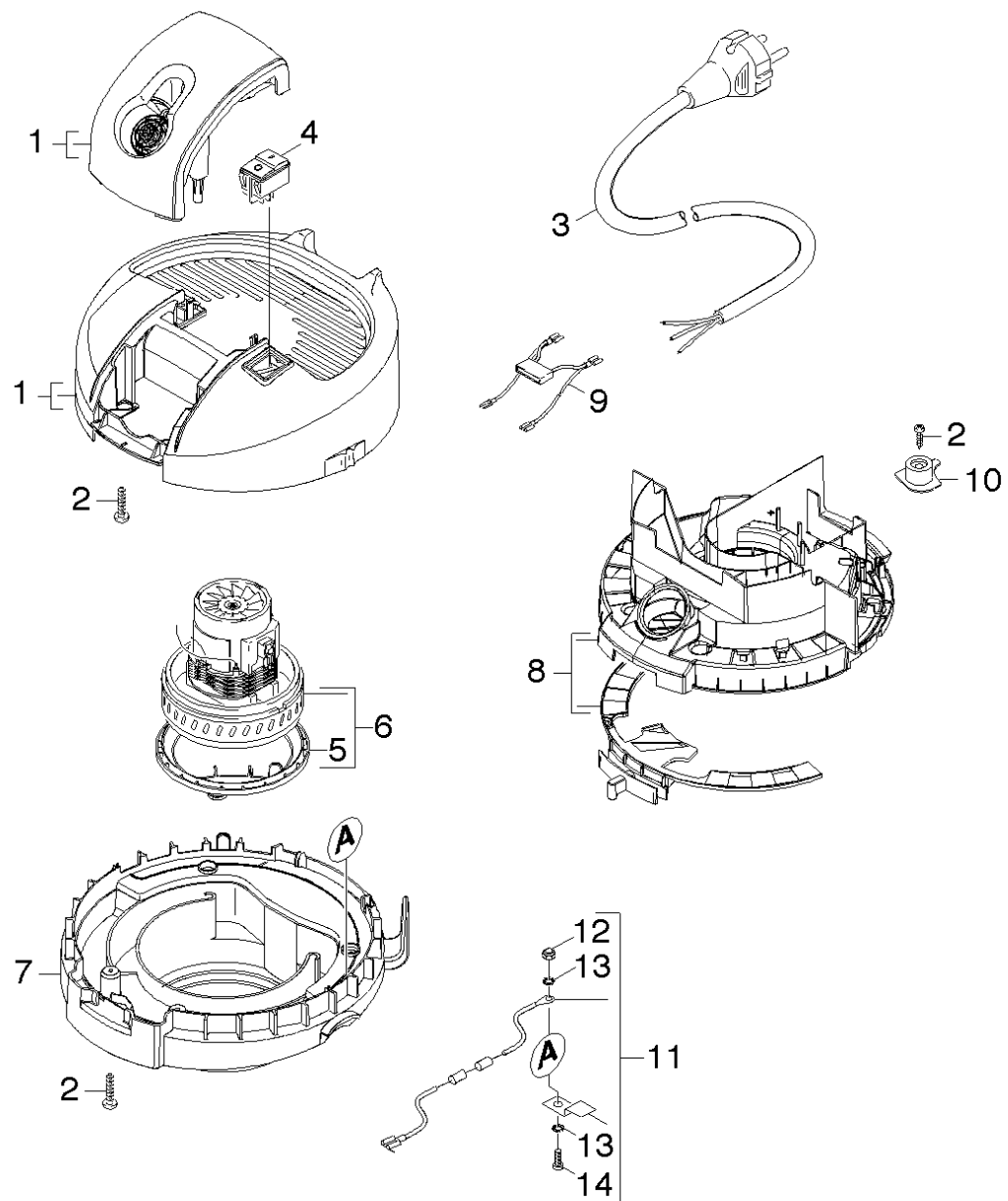
3 Cartridge filter WD/SE (6.414-552.0)

---

POS	Article no.	Description	Quantity	Unit
10	4.075-012.0	Closure complete	1	PC

---





## 20 Vacuum motor

POS	Article no.	Description	Quantity	Unit
1	9.001-287.0	Housing	1	PC
2	7.303-096.0	Screw 4x22-ST-10.9-R2R (IN6RD)	6	PC
3	9.084-154.0	Cable H05V-F 2X0,75 A2204 *EU	1	PC
	<b>Item text1:</b> /1.723-300.0 / -600.0			
3	9.084-159.0	Cable H05V-F 2X0,75 A2204 *GB	1	PC
	<b>Item text1:</b> /1.723-302.0 / -602.0			
3	9.084-160.0	Cable H05V-F 2x0,75 A2204 *AU	1	PC
	<b>Item text1:</b> /1.723-303.0 / -603.0			
3	9.084-180.0	Cable with plug A22X4 *JP	1	PC
	<b>Item text1:</b> /1.723-309.0			
3	9.084-305.0	Cable mit Stecker CH	1	PC
	<b>Item text1:</b> /1.723-301.0 / -601.0			
4	6.630-087.0	Switch	1	PC
5	4.490-009.0	Bearing set fuer Motor (1.723-XXX)	1	PC
6	6.490-114.0	Vacuum motor 100V	1	PC
	<b>Item text1:</b> /1.723-309.0			
6	4.490-008.0	Vacuum motor complete only for replaceme	1	PC
	<b>Item text1:</b> / 1.723-300.0 / -301.0 / -302.0 / -303.0 / -310.0 / -600.0 / -601.0 / -602.0 / -603.0			
7	9.012-166.0	Motor bracket	1	PC
8	9.011-966.0	Moulded part complete	1	PC
9	2.884-135.0	Spare part set cable	1	PC
	<b>Item text1:</b> /1.723-300.0 / -301.0 / -302.0 / -303.0			
9	9.084-165.0	Cable and capacitor A 2504 *EU (POKE-IN)	1	PC
	<b>Item text1:</b> /1.723-600.0 / -601.0 / -602.0 / -603.0			
9	9.084-178.0	Cable set A22X4 *JP	1	PC
	<b>Item text1:</b> /1.723-309.0			
10	9.036-997.0	Strain relief	1	PC
11	7.777-999.0	Stockpiling discontinued	1	PC
12	7.311-516.0	Hexagon nut M 4-A2-70 DIN 985	1	PC
13	7.312-039.0	Serrated lock washer A4,3-1.4310 DIN 67	2	PC
14	7.306-208.0	Screw M 4x16-A2-70 (IN6RD)	1	PC



## 30 Accessories

---

POS	Article no.	Description	Quantity	Unit	Remark
1	9.012-004.0	Suction hose DN35x2	1	PC	2,0M
2	2.862-141.0	Floor tool complete	1	PC	
3	9.036-892.0	Mixing insert wet-dry	1	PC	
4	2.863-000.0	Wet and dry nozzle switchable WD/SE	1	PC	
5	2.863-308.0	Extension suction tube WD ID 35	2	PC	
6	6.906-240.0	Crevice nozzle DN35	1	PC	
7	6.959-130.0	Filter bag WD/SE 5pc.	1	ZSA	
8	2.863-316.0	Car nozzle	1	PC	

2 Floor tool complete (2.862-141.0)

---

<b>POS</b>	<b>Article no.</b>	<b>Description</b>	<b>Quantity</b>	<b>Unit</b>
10	9.036-892.0	Mixing insert wet-dry	1	PC

---