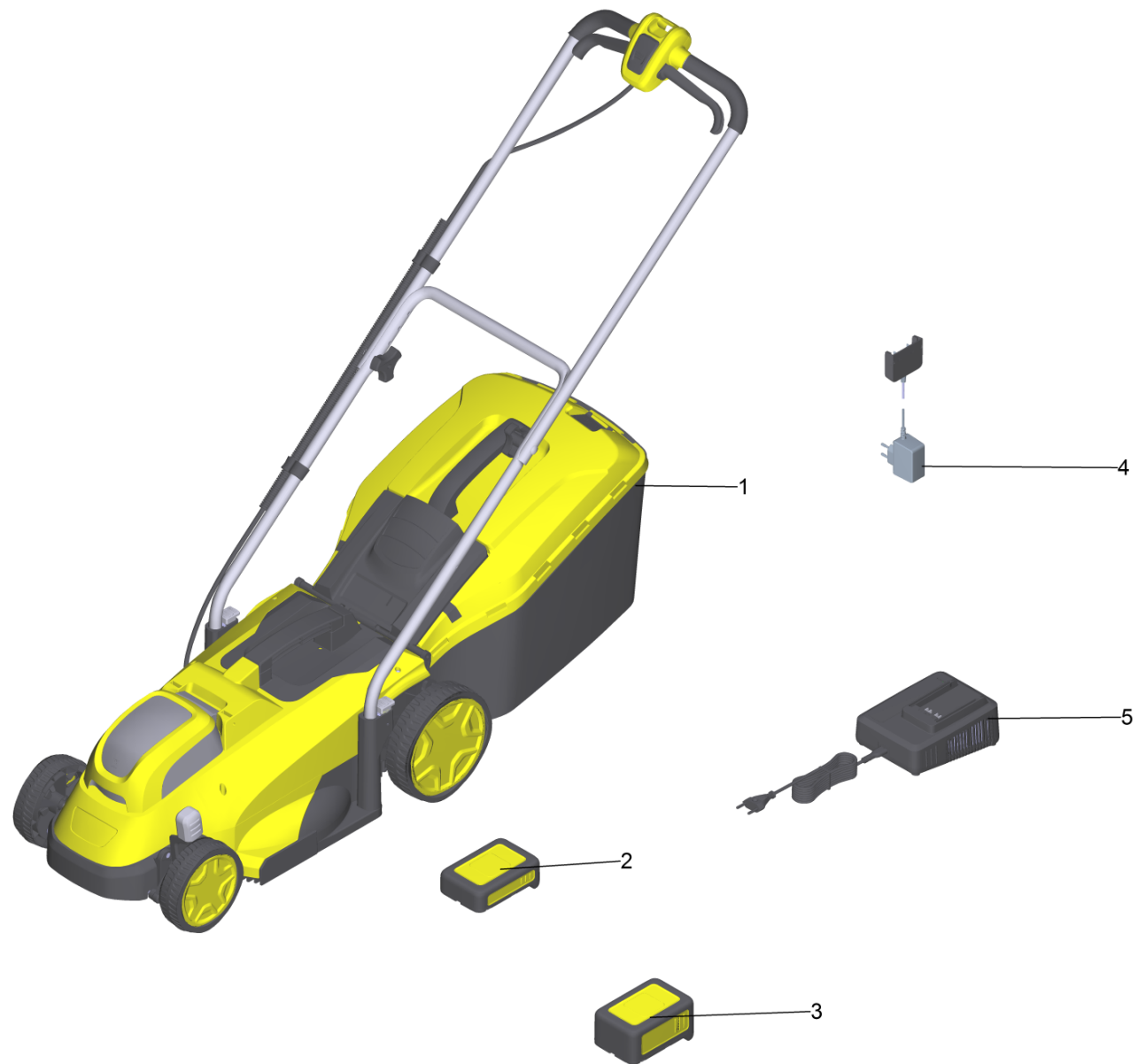


Spare parts list

(1.444-401.0) LMO 18-33 Battery Set *EU

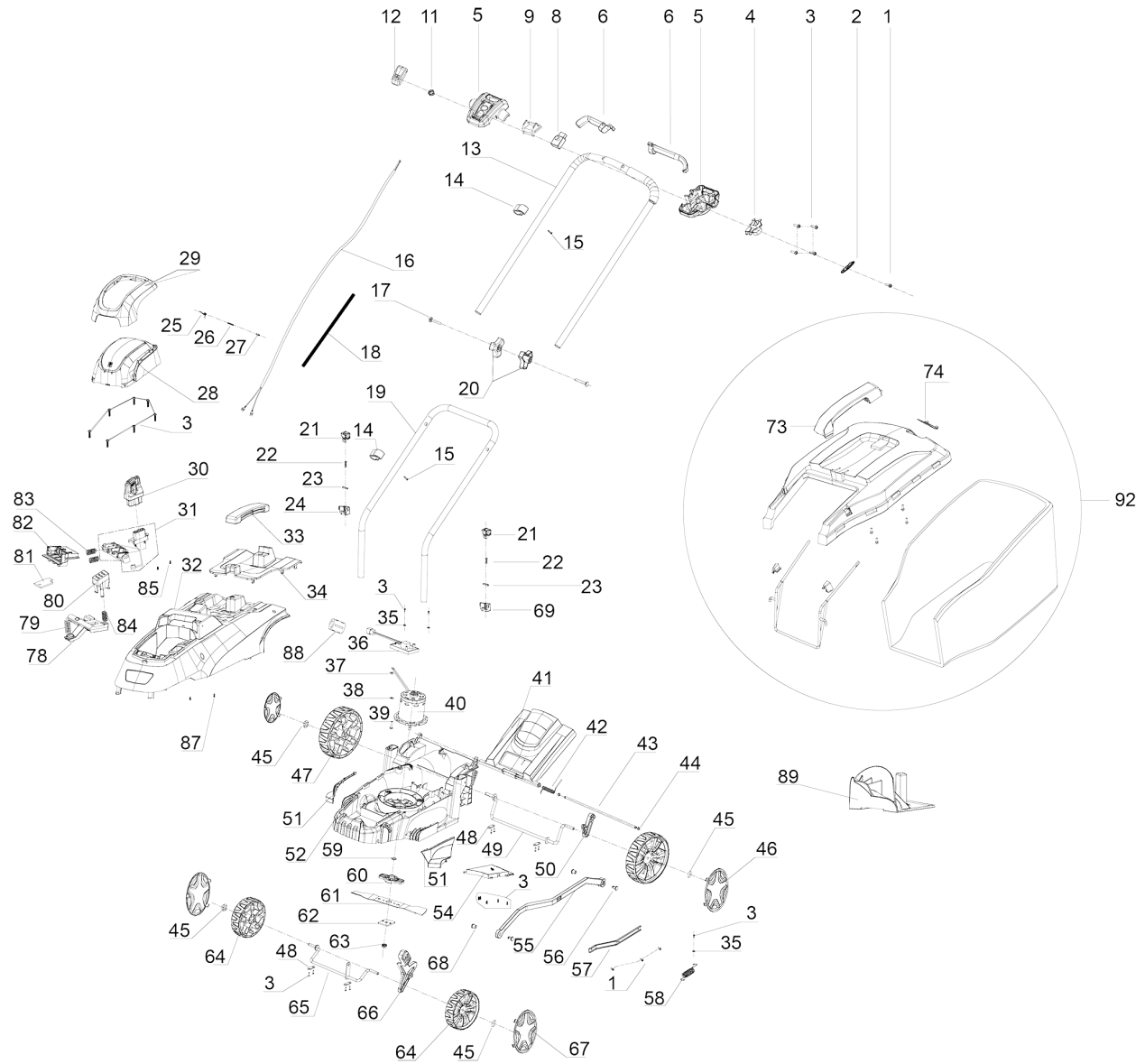
Table of contents

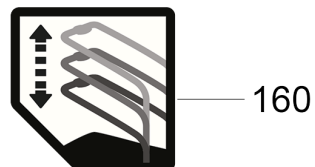
LMO 18-33 Battery Set *EU (1.444-401.0)	3
1 LMO Battery 18-33 *INT	5



LMO 18-33 Battery Set *EU (1.444-401.0)

POS	Article no.	Description	Quantity	Unit	Remark
6	2.445-044.0	Battery charger Battery Power+ 18/60 *EU	1	PC	18V/6,0A *EU
2	2.445-034.0	Battery Power 18/25 DW *INT	1	PC	18V/2,5Ah
3	2.445-035.0	Battery Power 18/50 DW *INT	1	PC	18V/5,0Ah
5	2.445-032.0	Fast battery recharger Battery Power 18 V *EU	1	PC	18V/2,5A *EU
1		LMO Battery 18-33 *INT	1	PC	
4	6.445-050.3	Plug-in charger packaged 18/5 *EU	1	PC	*EU
7	2.445-054.0	Uni-Charger Battery Power+ 18-36/60 *EU	1	PC	18-36V/2,5-6A *EU





1 LMO Battery 18-33 *INT

POS	Article no.	Description	Quantity	Unit
31	6.444-154.0	Adapter key	1	PC
49	6.444-169.0	Axle back wheel	1	PC
43	6.444-164.0	Axle flap rear	1	PC
65	6.444-182.0	Axle front wheel	1	PC
55	6.444-173.0	Bar height adjustment	1	PC
29	5.444-043.0	Battery cover	1	PC
28	5.444-044.0	Battery housing	1	PC
80	5.444-104.0	Battery release	1	PC
82	5.444-155.0	Battery release ejector	1	PC
34	5.444-048.0	Bottom hand grip	1	PC
12	6.444-138.0	Button security	1	PC
16	6.444-142.0	Cable	1	PC
14	6.444-140.0	Cable clip	2	PC
45	6.444-166.0	Clip cover	4	PC
92	6.444-026.0	Collection bag complete 35 L 18-33 LMO	1	PC
56	6.444-174.0	Connector	2	PC
68	6.444-184.0	Connector	2	PC
18	6.444-144.0	Corrugated tube	1	PC
52	6.444-171.0	Covering cap	1	PC
2	6.444-128.0	Covering cap switch box	1	PC
54	6.444-172.0	Cover plate sound insulation	1	PC
61	2.444-010.0	Cutter Lawn Mower 33cm 18V	1	PC
74	6.444-189.0	Display level collection bag	1	PC
36	6.444-157.0	Electronics cutting unit	1	PC
48	6.444-168.0	Ferrule	4	PC
41	6.444-162.0	Flap rear	1	PC
64	6.444-181.0	Front wheel	2	PC
73	6.444-248.0	Handhold collection bag	1	PC
33	6.444-155.0	Handhold cover above	1	PC
21	5.444-047.0	Height adjustment cover	2	PC
50	6.444-170.0	Holder back wheel	1	PC
60	6.444-178.0	Holder cutter	1	PC
4	6.444-130.0	Holder switch	1	PC

1 LMO Battery 18-33 *INT

POS	Article no.	Description	Quantity	Unit
24	6.444-149.0	Housing height adjustment	1	PC
69	6.444-185.0	Housing height adjustment	1	PC
20	6.444-146.0	Immobilizing handle	2	PC
30	6.444-153.0	Key	1	PC
100	5.444-084.0	Label Battery Power 18V LMO	1	PC
140	5.444-082.0	Label cutting width -33cm LMO	1	PC
170	5.444-149.0	Label height adjustment left LMO	1	PC
160	5.444-148.0	Label height adjustment right LMO	1	PC
120	5.444-131.0	Label instruction starter	1	PC
150	5.444-130.0	Label safety information 18-33 LMO	1	PC
130	5.444-083.0	Label Volumen -35L LMO	1	PC
110	5.444-081.0	Label with Kaercher logo 18V_33 -LMO	1	PC
66	6.444-183.0	Lever height adjustment	1	PC
23	6.444-148.0	Locking pin	2	PC
44	6.444-165.0	Locking ring	2	PC
88	6.444-197.0	Magnet EMC	2	PC
13	6.444-139.0	Metal retaining bracket above	1	PC
19	6.444-145.0	Metal retaining bracket bottom	1	PC
40	6.444-161.0	Motor 18V DC	1	PC
62	6.444-179.0	Mounting plate cutter	1	PC
32	5.444-040.0	Mover housing 18-33 LMO	1	PC
89	6.444-023.0	Mulching plug LMO 18-33	1	PC
37	6.444-158.0	Nut M6	6	PC
63	6.444-180.0	Nut M10x1.25	1	PC
81	6.444-192.0	Plate releasing device	1	PC
47	6.444-167.0	Rear wheel	2	PC
1	6.444-127.0	Screw	1	PC
3	6.444-129.0	Screw	33	PC
15	6.444-141.0	Screw	2	PC
17	6.444-143.0	Screw	2	PC
85	6.444-195.0	Screw	2	PC
87	6.444-196.0	Screw	5	PC
39	6.444-160.0	Screw M6x30	6	PC

1 LMO Battery 18-33 *INT

POS	Article no.	Description	Quantity	Unit
51	6.445-210.0	Set covering cap	1	PC
5	6.445-207.0	Set housing switch	1	PC
6	6.445-208.0	Set switching lever	1	PC
11	6.444-137.0	Spring	1	PC
22	6.444-147.0	Spring	2	PC
26	6.444-151.0	Spring	1	PC
58	6.444-176.0	Spring	1	PC
79	6.444-191.0	Spring	1	PC
83	6.444-193.0	Spring	2	PC
84	6.444-194.0	Spring	1	PC
57	6.444-175.0	Stay height adjustment	1	PC
8	6.444-134.0	Switch	1	PC
9	6.444-135.0	Switch cover	1	PC
25	6.444-150.0	Torsion spring	1	PC
42	6.444-163.0	Torsion spring	1	PC
78	5.444-154.0	Trigger	1	PC
27	6.444-152.0	Turn pin	1	PC
35	6.444-156.0	Washer	2	PC
38	6.444-159.0	Washer	6	PC
59	6.444-177.0	Washer	1	PC
67	5.444-042.0	Wheel cover front	2	PC
46	5.444-117.0	Wheel cover rear	2	PC