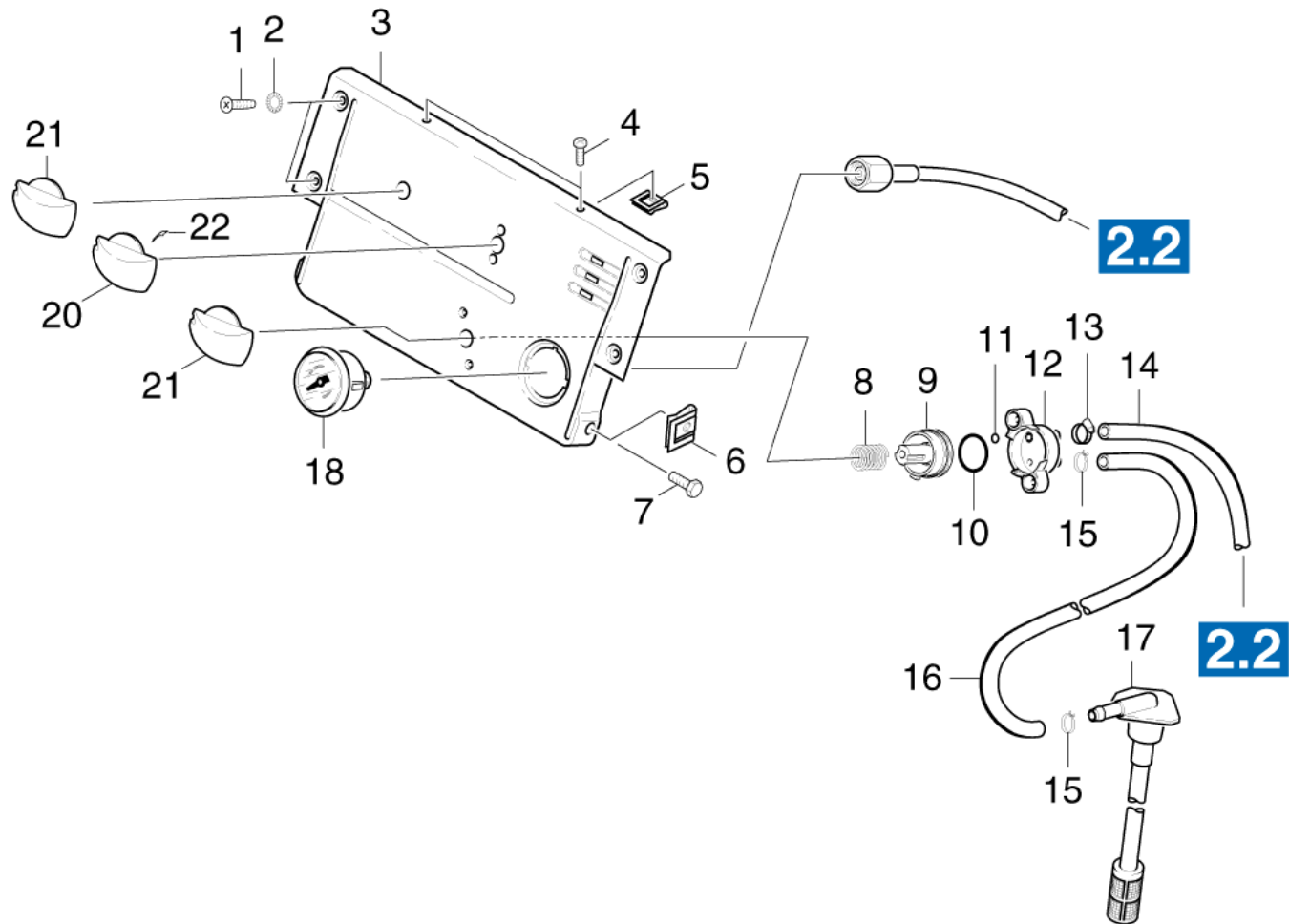


110 Control panel

Professional \ High pressure cleaner hotwater \ Electric motor \ HDS 895 M ECO *EU-I \ Spare parts list HDS 895 M ECO \ Control panel



110 Control panel

Professional \ High pressure cleaner hotwater \ Electric motor \ HDS 895 M ECO *EU-I \ Spare parts list HDS 895 M ECO \ Control panel



POS	Article no.	Description	Quantity	Unit	Foot note text
3	5.841-463.0	Control panel	1	PC	
17	6.414-028.0	Filter	1	PC	
21	5.321-633.0	Handhold	2	PC	
20	5.321-641.0	Handhold thermostat	1	PC	
8	5.332-474.0	Helical spring	1	PC	
7	7.304-382.0	Hexagonal head screw M 6x12-8.8-A2E ISO	2	PC	
15	6.388-559.0	Hose clip	2	PC	
13	6.388-515.0	Hose clip	1	PC	
14	6.388-194.0	Hose DN 7	1	m	TO ORDER AS CUT GOODS
16	6.388-225.0	Hose DN 7	1	m	TO ORDER AS CUT GOODS
11	6.362-386.0	O-Ring seal 5,0 x 1,5-NBR 80	1	PC	
10	6.362-712.0	O-Ring seal 25,3 X 2,4	1	PC	
18	6.421-223.0	Pressure gauge 0-30 MPA	1	PC	
	Item text1: / 1.027-514.0 / -515.0				
18	6.421-170.0	Pressure gauge 0-315 BAR	1	PC	
	Item text1: / 1.027-315.0 / -316.0 / -317.0 /-318.0 /-322.0 /-323.0 /-324.0 /-328.0 /-329.0 /-360.0 /-361.0 /-503.0				
6	6.310-082.0	Putting nut M6	2	PC	
1	7.303-038.0	Screw M5x12 -St-P2R (In6Rd)	4	PC	
4	7.303-078.0	Sheet metal screw ST4,8X19-ST-P2R (In6Rd)	2	PC	
5	6.310-034.0	Speed nut	2	PC	
22	6.313-014.0	Spring element	1	PC	
2	7.312-172.0	Toothed lock washer A5,3-FSt-A3E DIN 6797	4	PC	
12	5.587-054.0	Valve housing	1	PC	
9	5.581-251.0	Valve seat	1	PC	