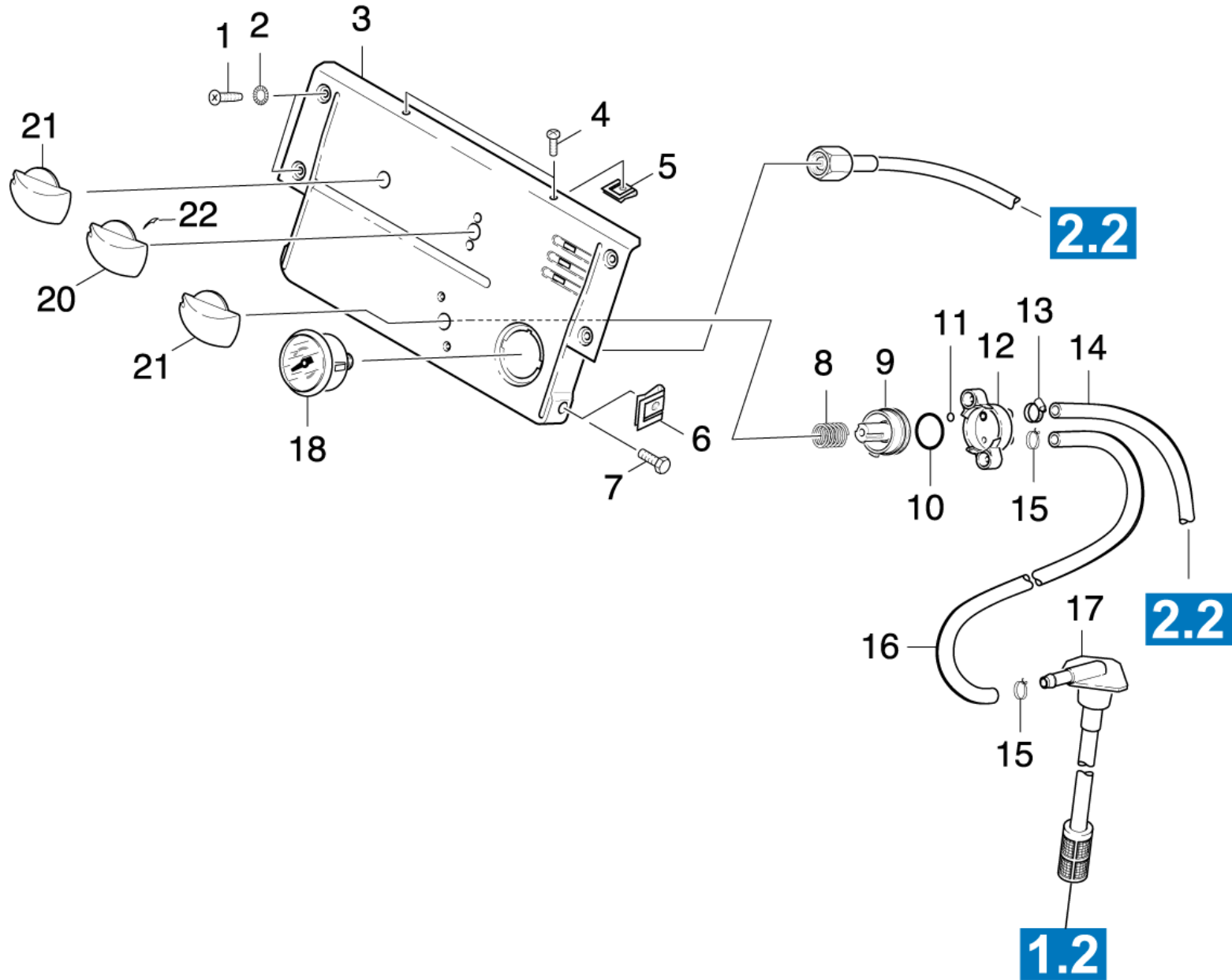


# 110 Control panel

Overview technical documents/Professional/High pressure cleaner hotwater/Electric motor/HDS 895 SX \*EU (1.027-320.0)/Spare parts list HDS 895 S \*EUR/110 Control panel



**110 Control panel**

Overview technical documents/Professional/High pressure cleaner hotwater/Electric motor/HDS 895 SX \*EU (1.027-320.0)/Spare parts list HDS 895 S \*EUR/110 Control panel

Rez.daļas/nodil.pakļ.daļas	Poz.	Materiāla Nr.	Nosaukums	Daudzums	Pārdoš. vienība	no sēr. Nr..	līdz sēr. Nr.
	2	7.312-172.0	Toothed lock washer A5,3-FSt-A3E DIN 67	4.000	ST	0000000000	0000000000
X	7	7.304-382.0	Hexagonal head screw M 6x12-8.8-A2E ISO	2.000	ST	0000000000	0000000000
	4	7.303-078.0	Sheet metal screw ST4,8X19-ST-A2R (KOMBI	2.000	ST	0000000000	0000000000
X-X	1	7.303-038.0	Screw M6x20 -St-R3R (In6Rd)	4.000	ST	0000000000	0000000000
X-X	18	6.421-170.0	Manometrs 0-315 bāri	1.000	ST	0000000000	0000000000
X-X	17	6.414-028.0	Filtrs	1.000	ST	0000000000	0000000000
X-X	15	6.388-559.0	Hose clip	2.000	ST	0000000000	0000000000
X-X	13	6.388-515.0	Hose clip	1.000	ST	0000000000	0000000000
X-X	16	6.388-225.0	Šjūtene DN 7	1.000	M	0000000000	0000000000
X-X	14	6.388-194.0	Šjūtene DN 7	1.000	M	0000000000	0000000000
X-X	10	6.362-712.0	Gredzenblīve 25,3 X 2,4	1.000	ST	0000000000	0000000000
X-X	11	6.362-386.0	Gredzenblīve 5,0 x 1,5-NBR 80	1.000	ST	0000000000	0000000000
X-X	22	6.313-014.0	Spailes atspere	1.000	ST	0000000000	0000000000
X-X	6	6.310-082.0	Putting nut M6	2.000	ST	0000000000	0000000000
	5	6.310-034.0	Speed nut	2.000	ST	0000000000	0000000000
X-X	3	5.841-463.0	Vadības panelis	1.000	ST	0000000000	0000000000
Pozīcijas teksts: / 1.027-320.0 / -321.0							
X-X	3	5.841-463.0	Vadības panelis	1.000	ST	0000000000	0000000000
Pozīcijas teksts: / 1.027-301.0 / -302.0 / -304.0 / -305.0 / -306.0 / -307.0 / -312.0 / -313.0 / -314.0							
X-X	12	5.587-054.0	Vārsta korpuss	1.000	ST	0000000000	0000000000
X-X	9	5.581-251.0	Valve seat	1.000	ST	0000000000	0000000000
X	8	5.332-474.0	Spirālveida atspere	1.000	ST	0000000000	0000000000
X	20	5.321-641.0	Termostata tureklis	1.000	ST	0000000000	0000000000
X-X	21	5.321-633.0	handhold	2.000	ST	0000000000	0000000000