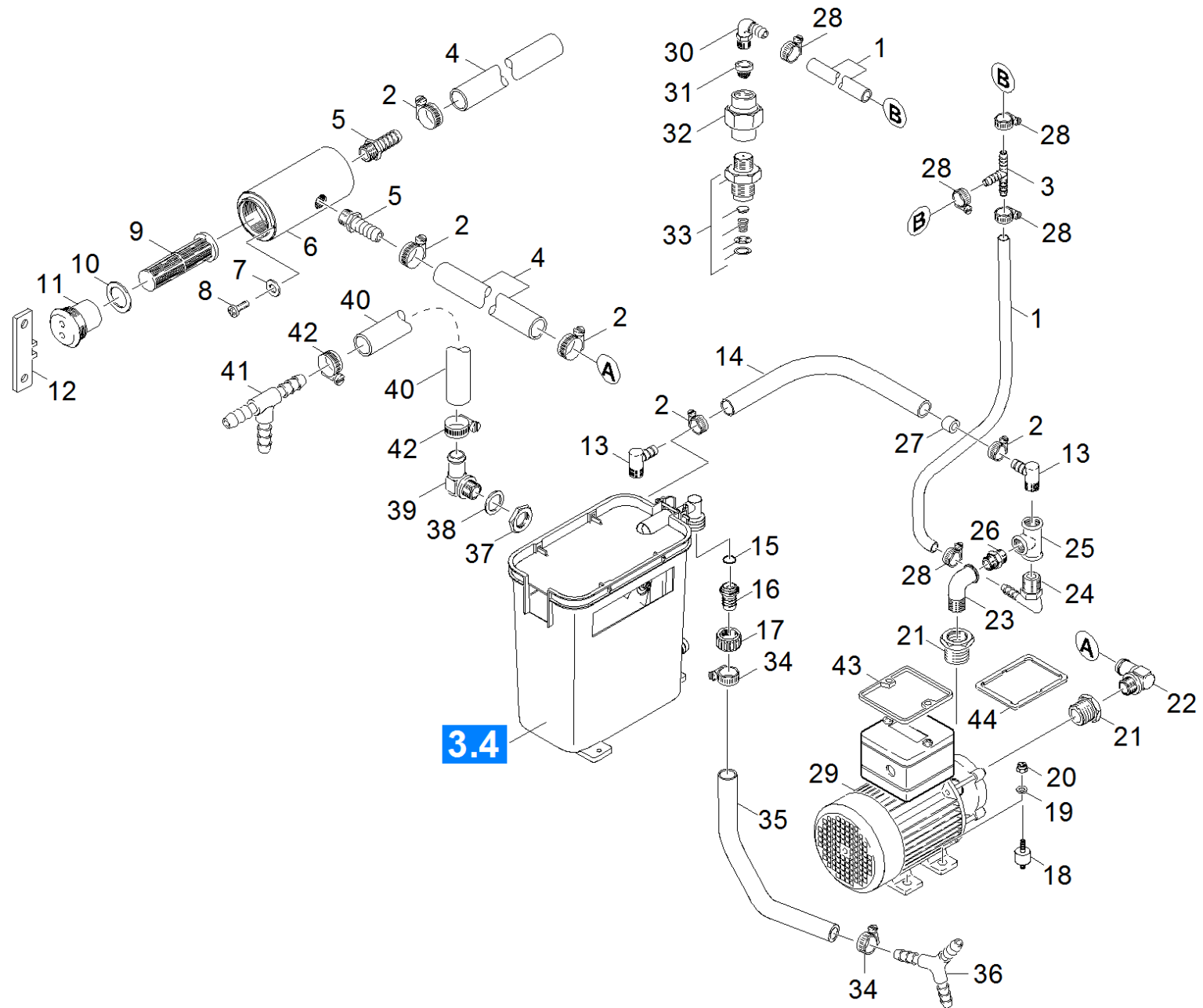


82 Antifreezing basic unit

Professional \ Systems engineering \ Self-service appliances \ Multi bay system SB \ SB-C 5/10 \ SB-C 5/10-2 Wso Fp_dry foam \ Documentation SB-C 5/10-2 (Fp) Wso \ Spare parts list SB-C 5/10 Relaunch 2008 \ Antifreezing basic



82 Antifreezing basic unit

POS	Article no.	Description	Quantity	Unit	Remark
1	6.388-782.0	Hose DN 8	1.000	M	
2	7.373-023.0	Hose clip A 16-27x9-W4 DIN 3017	8.000	ST	
3	6.389-606.0	T-Piece 8	1.000	ST	
4	6.388-976.0	Hose	1.000	M	
5	6.388-584.0	Hose stem	2.000	ST	
6	5.731-622.0	Housing filter	1.000	ST	
7	7.312-282.0	Washer 5 -A2 ISO 7093-1	4.000	ST	
8	7.303-104.0	Screw 5x16 -A2-70 (IN6RD)	4.000	ST	
9	5.731-634.0	Water filter	1.000	ST	
10	6.362-043.0	Seal 1 Z CSM	1.000	ST	
11	5.411-001.0	Drain plug	1.000	ST	
12	5.873-013.0	Key	1.000	ST	
13	5.443-191.0	Hose stem	2.000	ST	
14	6.388-719.0	Hose DN17	1.000	M	
15	6.362-078.0	O-Ring seal 13,3x2,4	1.000	ST	
16	5.443-224.0	Hose stem	1.000	ZST	
17	5.310-062.0	Nut	1.000	ST	
18	6.339-021.0	Rubber buffer 2xM6-D20 H15	4.000	ST	
19	7.312-026.0	Washer 6 -A2 ISO 7089	4.000	ST	
20	7.311-422.0	Hexagon nut M 6-1.4305 ISO 10511	4.000	ST	
21	6.387-871.0	Reducing nipple N4-1"x1/2"	2.000	ST	
22	5.443-056.0	Hose stem	1.000	ST	
23	6.387-877.0	Angle A4-1/2"-2.1096	1.000	ST	
24	6.388-773.0	Angle bushing DN 8	1.000	ST	
25	6.387-876.0	T-Piece 1/2"-Rotguss	1.000	ST	
26	6.387-878.0	Double nipple N8-1/2"-2.1096	1.000	ST	
27	5.665-024.0	Throttle D2mm	1.000	ST	
28	6.388-545.0	Hose clip	6.000	ST	
29	6.473-482.0	Centrifugal pump 0,37kW	1.000	ST	
30	6.388-423.0	Angle bushing 1/4"	1.000	ST	
31	6.414-172.0	Strainer	1.000	ST	
32	6.386-653.0	Screw connector	1.000	ST	
33	4.580-011.0	Check valve	1.000	ST	

82 Antifreezing basic unit

Professional \ Systems engineering \ Self-service appliances \ Multi bay system SB \ SB-C 5/10 \ SB-C 5/10-2 Wso Fp_dry foam \ Documentation SB-C 5/10-2 (Fp) Wso \ Spare parts list SB-C 5/10 Relaunch 2008 \ Antifreezing basic

KÄRCHER

POS	Article no.	Description	Quantity	Unit	Remark
34	6.388-545.0	Hose clip	2.000	ST	
35	6.388-345.0	Hose DN13	1.000	M	
36	6.388-431.0	Y-Bushing	1.000	ST	
37	6.310-004.0	Hexagon nut G 1/2"	1.000	ST	
38	6.362-015.0	Joint ring 21X30X2	1.000	ST	
39	5.443-056.0	Hose stem	1.000	ST	
40	6.388-157.0	Hose DN19	1.000	M	
41	6.388-397.0	T-Hose nozzle 16-16-16	1.000	ST	
42	7.373-023.0	Hose clip A 16-27x9-W4 DIN 3017	1.000	ST	
43	6.984-611.0	Seal terminal box	1.000	ST	Version 1
44	6.473-583.0	Seal	1.000	ST	Version 2